



ELISA PRODUCT INFORMATION & MANUAL

Human Reg1B ELISA Kit (Colorimetric)

NBP2-80349

Sample Insert for Reference Only

Enzyme-linked Immunosorbent Assay for quantitative
detection. For research use only.

Not for diagnostic or therapeutic procedures.

BACKGROUND.....	1
INTENDED USE	1
PRINCIPLE OF THE ASSAY	2
MATERIALS PROVIDED	3
STORAGE.....	4
OTHER SUPPLIES REQUIRED	5
PRECAUTIONS.....	6
SAFETY INSTRUCTIONS	6
TECHINICAL TIPS.....	6
TYPICAL DATA	11
PRECISION	12
RECOVERY.....	12
LINEARITY	12
SENSITIVITY	13
CALIBRATION.....	13
SAMPLE VALUES	14
SPECIFICITY	14
TROUBLE SHOOTING	15
ASSAY SUMMARY	16

BACKGROUND

Regenerating gene (Reg), first isolated from a regenerating islet cDNA library, encodes a secretory protein with a growth stimulating effect on pancreatic beta cells, and could be associated with fibrocalculous pancreatopathy. Reg and Reg-related genes which were expressed in various organs have been revealed to constitute a multigene family, the Reg family consisting of four subtypes (types I, II, III, IV) and are involved in cancers and neurodegenerative diseases. Regenerating islet-derived 1 beta (REG1B), also known as Lithostathine-1-beta and Pancreatic stone protein 2 (PSPS2), is a types I Reg protein and contains one typical C-type lectin domain. REG1B is a 166-amino acid protein which has 22 amino acid substitutions in comparison with the previously isolated human REG1A, and it is was expressed only in pancreas. REG1B Is normally found in the exocrine pancreas, whereas in other tissues it appears either only under pathological conditions, such as Alzheimer's disease (brain), cancer (colon), or during regeneration such as neuronal sprouting in brain and pancreas regeneration. REG1B might act as an inhibitor of spontaneous calcium carbonate precipitation. The REG1A and REG1B gene and proteins could play different roles in the pancreas.

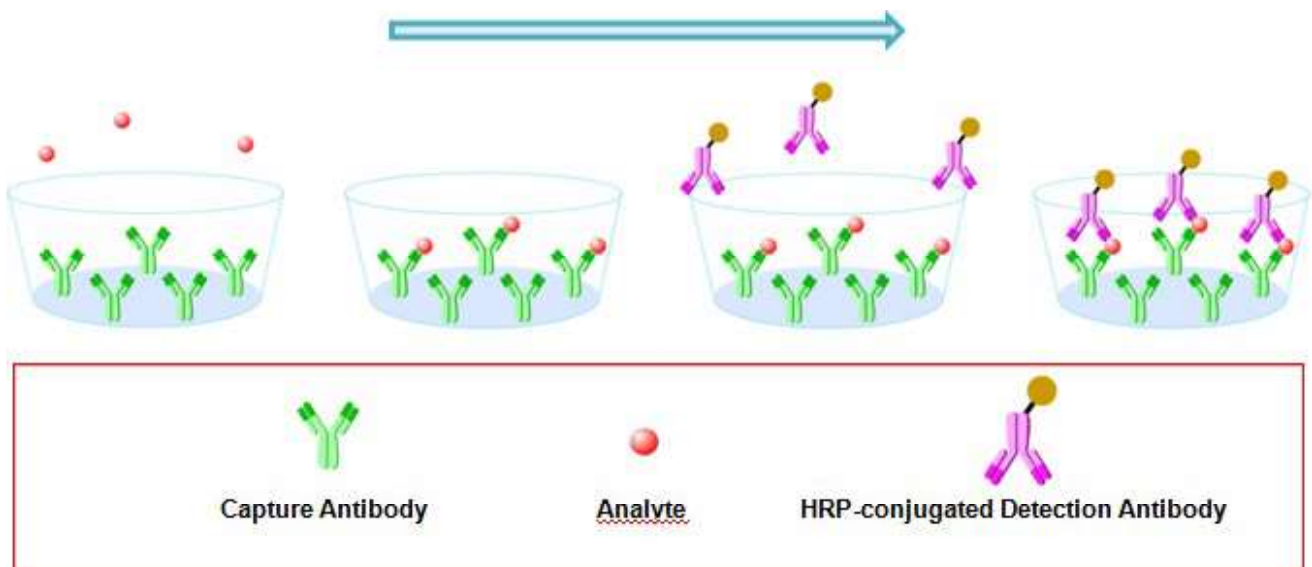
INTENDED USE

For the quantitative determination of Human Reg1B concentration in serum.

The use of this kit for other sample types need be validated by the end user due to the complexity of natural targets and unpredictable interference.

PRINCIPLE OF THE ASSAY

The principle of this ELISA kit is based on the solid phase sandwich enzyme immunoassay technique. A monoclonal antibody specific for Human Reg1B has been pre-coated onto well plate strips. Standards and samples are added to the wells and Human Reg1B present in the sample is bound by the immobilized antibody. After incubation the wells are washed and a horseradish peroxidase conjugated anti-Human Reg1B antibody is added, producing an antibody-antigen-antibody "sandwich complex". Following a wash to remove any unbound antibody a TMB substrate solution is loaded and color develops in proportion to the amount of Human Reg1B bound. The reaction is stopped by the addition of a stop solution and the intensity of the color can be measured at 450 nm (See schematics below).



MATERIALS PROVIDED

Human Reg1B Microplate - 96 well polystyrene microplate (12 strips of 8 wells) coated with rabbit mAb antibody against Human Reg1B.

Human Reg1B Detection Antibody - 0.2 mg/mL of rabbit mAb antibody against Human Reg1B conjugated to horseradish peroxidase (HRP) with preservatives.

Human Reg1B Standard - Recombinant Human Reg1B in a buffer with preservatives, lyophilized. The amount of standard is lot specific and indicated on the label of standard vial.

Wash Buffer Concentrate - 25 mL of a 20-fold concentrated solution of buffered surfactant with preservatives.

Dilution Buffer Concentrate - 8 mL of a 20-fold concentrated dilution buffer with preservatives.

Color Reagent A - 13 mL of stabilized hydrogen peroxide.

Color Reagent B - 13 mL of stabilized chromogen (tetramethylbenzidine).

Stop Solution - 8 mL of 2 N sulfuric acid.

STORAGE

Unopened Kit	Store at 2 - 8°C and the kit is stable for 6 months upon receipt.	
Opened/ Reconstituted Reagents	Diluted Wash Buffer	Stored for up to 1 week at 2 - 8°C
	Diluted Dilution Buffer	
	Conjugate	Stored for up to 1 month at 2 - 8°C
	Stop Solution	
	Unmixed Color Reagent A	
	Unmixed Color Reagent B	
	Standard	After reconstitution, store for up to 1 month at -80°C. The reconstituted standards should be aliquoted and avoid repeated freeze-thaw cycles.
	Microplate Wells	Return unused strips to the foil pouch containing the desiccant pack and reseal along entire edge of zip-seal. Stored for up to 1 month at 2 - 8°C

OTHER SUPPLIES REQUIRED

- Microplate reader capable of measuring absorbance at 450 nm
- Pipettes and pipette tips
- Deionized or distilled water
- Multi -channel pipette, squirt bottle, manifold dispenser, or automated microplate washer
- 500 mL graduated cylinder
- Tubes for standard dilution
- Well plate cover or seals

PRECAUTIONS

1. This kit is **for research use only** and is not for use in diagnostic or therapeutic procedures.
2. The kit should not be used beyond the expiration date.
3. Do not mix reagents from different lots.
4. The kit is designed and tested to detect the specific targets and samples shown in the manual. The use of this kit for other purpose should be verified carefully by the end user.

SAFETY INSTRUCTIONS

5. The Stop Solution provided with this kit is an acid solution. Take care when using the reagent to avoid the risk.
6. All biological materials should be handled and discarded as potentially hazardous following local laws and regulations.
7. Personal protective equipments such as lab coats, gloves, surgical masks and goggles are necessary in experiments for safety reasons.

TECHINICAL TIPS

8. Bring all reagents and samples to room temperature before use.
9. Samples should be thawed completely and mixed well prior to analysis. Avoid repeated freeze-thaw cycles of frozen samples.
10. A standard curve should be generated for each set of sample assayed. **DONOT** USE the standard curves from other plates or other days.
11. Use a new disposable reagent reservoir and new disposable pipette tips for each transfer to avoid cross-contamination.
12. Read the absorbance of each well within 20 minutes after adding the stop solution.

SAMPLE COLLECTION AND STORAGE

Serum - Use a serum separator tube and allow samples to clot for 30 minutes before centrifugation for 15 minutes at 1000 x g. Remove serum and assay immediately or aliquot and store samples at -20°C or lower temperature. **Avoid repeated freeze -thaw cycles.**

Note:

The sample should be diluted to within the working range of the assay in 1 × dilution buffer. The exact dilution must be determined based on the concentration of specific target in individual samples.

REAGENT PREPARATION

Bring all reagents to room temperature before use. If crystals have formed in buffer solution, warm to room temperature and mix gently until the crystals have completely dissolved.

Wash Buffer - Prepare 1× wash buffer by adding 20 mL of Wash Buffer Concentrate to deionized or distilled water to prepare 400 mL of Wash Buffer.

Dilution Buffer - Prepare 1× dilution buffer by adding 5 mL of Dilution Buffer Concentrate to deionized or distilled water to prepare 100 mL of Dilution Buffer.

Detection Antibody - Centrifuge at 10,000 x g for 20 seconds. Dilute to **work concentration** of 0.5 µg/mL in Dilution Buffer before use.

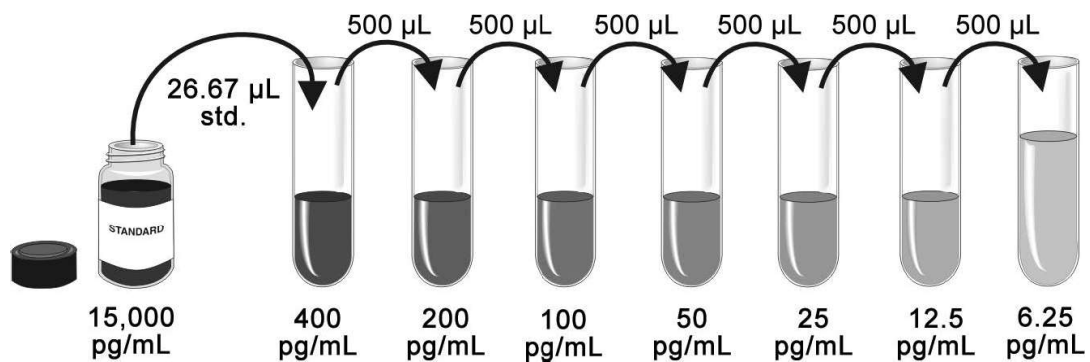
Substrate Solution - Color Reagents A and B should be mixed together in equal volumes within 15 minutes of use. Protect from light. 200 µL of the resultant mixture is required per well. **Take care not to contaminate the Color Reagent. If the mixed color reagent is blue. DO NOT USE.**

Human Reg1B Standard - Reconstitute the Human Reg1B Standard with 1 mL of Dilution Buffer to make stock solution. Shake the vial gently until the lyophilized powder totally dissolved (**Do not turn the vial upside down**). Mix the standard to ensure complete reconstitution prior to making dilutions.

Prepare serially diluted standards as described in the following step:

Pipette 1000 μL of Dilution Buffer into the 400 pg/mL tube. Pipette 500 μL of Dilution Buffer into the remaining tubes. Use the stock solution to produce a dilution series as the following figure. Mix each tube thoroughly before the next transfer. The 400 pg/mL standard serves as the high standard. The Dilution Buffer serves as the zero standard (0 pg/mL). **Ensures each assay has a standard curve. DO NOT USE the standard curve on other plates or other days.**

The following graph is only for demonstration purposes. The concentration of stock solution is lot specific and need be calculated with the actual amount of standard labeled on the standard vial.



ASSAY PROCEDURE

Bring all reagents and samples to room temperature before use. It is recommended that all samples and standards be assayed in duplicate.

1. Prepare all reagents, working standards, and samples as directed in the previous sections.
2. Remove unused microplate strips from the plate frame, return them to the foil pouch containing the desiccant pack, and reseal.
3. Wash each well three times with Wash Buffer (300 μ L/well) using a squirt bottle, multi-channel pipette, manifold dispenser or autowasher. **Complete removal of liquid at each step is essential to good performance. Remove any remaining Wash Buffer by aspirating or decanting. Invert the plate and blot it against clean paper towels.**
4. Add 100 μ L of each serially diluted protein standard or test sample per well including a zero standard. **Ensure reagent addition is uninterrupted and completed within 15 minutes.** Cover/seal the plate and incubate for 2 hours at room temperature.
5. Repeat the aspiration/wash as in Step 3.
6. Add 100 μ L of Detection Antibody in working concentration to each well. Cover/seal the plate and incubate for 1 hour at room temperature.
7. Repeat the aspiration/wash as in Step 3.
8. Add 200 μ L of Substrate Solution to each well. Incubate for 20 minutes at room temperature. **Protect from light.**
9. Add 50 μ L of Stop Solution to each well. If color change does not appear uniform, gently tap the plate to ensure thorough mixing.
10. **Determine the optical density of each well within 20 minutes**, using a microplate reader set to 450 nm.

CALCULATION OF RESULTS

If samples generate values higher than the highest standard, dilute the samples and repeat the assay.

Calculate the mean absorbance for each standard, control and sample and subtract average zero standard optical density (O.D.) .

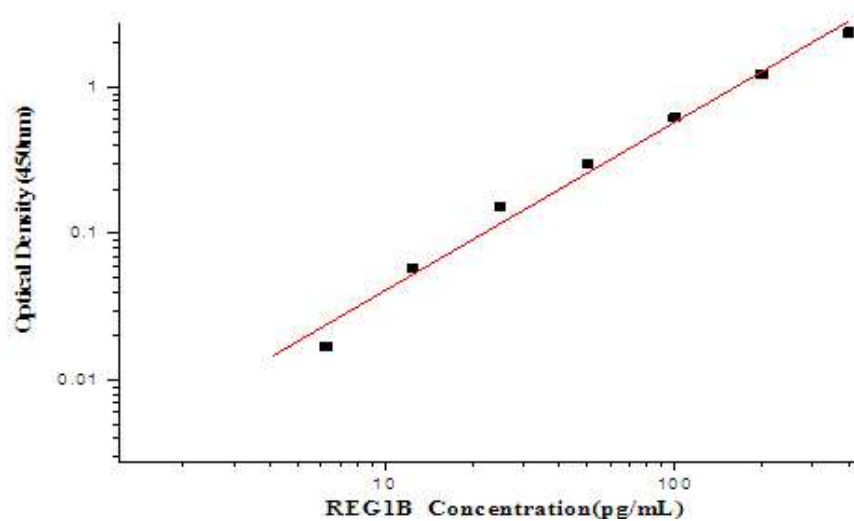
Construct a standard curve by plotting the mean absorbance for each standard on the y-axis against the concentration on the x-axis and draw a best fit curve through the points on the graph. Most graphing software can help make the curve and a four parameter logistic (4-PL) usually provide the best fit, though other equations (e.g. linear, log/log) can also be tried to see which provides the most accurate.

Extrapolate the target protein concentrations for unknown samples from the standard curve plotted.

TYPICAL DATA

This standard curve is only for demonstration purposes. A standard curve should be generated for each assay.

Concentration (pg/mL)	Zero standard subtracted OD
0	0
6.25	0.017
12.5	0.058
25	0.151
50	0.301
100	0.615
200	1.217
400	2.357



PRECISION

Intra-assay Precision (Precision within an assay)

Three samples of known concentration were tested twenty times on one plate to assess intra-assay precision.

Inter-assay Precision (Precision between assays)

Three samples of known concentration were tested in five separate assays to assess inter-assay precision.

	Intra -assay Precision			Inter -assay Precision		
Sample	1	2	3	1	2	3
N	20	20	20	5	5	5
Mean (pg/mL)	69	128	241	58	118	223
SD	1.20	3.02	6.31	7.92	13.66	13.57
CV (%)	1.7%	2.3%	2.6%	13.7%	11.6%	6.1%

RECOVERY

The recovery of Human Reg1B spiked to different levels throughout the range of the assay in related matrices was evaluated.

Sample	Average % Recovery	Range
Serum (n=3)	119%	112-126%

LINEARITY

		Serum
1:2	recovery of detected	104%
1:4	recovery of detected	88%
1:8	recovery of detected	108%
1:16	recovery of detected	108%

SENSITIVITY

The minimum detectable dose (MDD) of Human Reg1B is typically less than 4.53 pg/mL. The MDD was determined by adding three standard deviations to the mean optical density value of twenty zero standard replicates and calculating the corresponding concentration.

CALIBRATION

This immunoassay is calibrated against a highly purified HEK 293-expressed recombinant Human Reg1B.

SAMPLE VALUES

The average concentration of Human Reg1B in 10 normal human serum is 26.18 +/- 6.05 ng/mL ranging from 15.06 to 34.17 ng/mL.

SPECIFICITY

This assay recognizes both recombinant and natural Human Reg1B. The factors listed below were prepared at 50 ng/mL in dilution buffer and assayed for cross-reactivity. No cross-reactivity was observed. Cross-reactivity was observed to be 94% with 0.04 ng/mL of recombinant REG1A.

Recombinant human			
IL-1	IL-2	IL-33	IL-10
IL-8	TNF- α	IL-4	IL-6
IFN- γ	MIP-1 β	TIMP-1	TIMP-2
GM-CSF	SCF	PDGF	VEGF
REG1A			

TROUBLE SHOOTING

Problems	Possible Sources	Solutions
No signal	Incorrect or no Detection Antibody was added	Add appropriate Detection Antibody and continue
	Substrate solution was not added	Add substrate solution and continue
	Incorrect storage condition	Check if the kit is stored at recommended condition and used before expiration date
Poor Standard Curve	Standard was incompletely reconstituted or was inappropriately stored	Aliquot reconstituted standard and store at -80°C . The reconstituted standards should be aliquoted and avoid repeated freeze-thaw cycles.
	Imprecise / inaccurate pipetting	Check / calibrate pipettes
	Incubations done at inappropriate temperature, timing or agitation	Follow the general ELISA protocol
	Background wells were contaminated	Avoid cross contamination by using the sealer appropriately
Poor detection value	The concentration of antigen in samples was too low	Enriching samples to increase the concentration of antigen
	Samples were ineffective	Check if the samples are stored at cold environment. Detect samples in timely manner
High Background	Insufficient washes	Use multichannel pipettes without touching the reagents on the plate
		Increase cycles of washes and soaking time between washes
	Color Reagent should be clear and colorless prior to addition to wells	Color Reagent should be clear and colorless prior to addition to wells
	Use clean tubes and pipettes tips	Use clean plates, tubes and pipettes tips
Non-specificity	Samples were contaminated	Avoid cross contamination of samples
	The concentration of samples was too high	Try higher dilution rate of samples

ASSAY SUMMARY

