



## **ELISA PRODUCT INFORMATION & MANUAL**

### **Asprosin Antibody Pair *NBP2-78856***

Enzyme-linked Immunosorbent Assay for quantitative  
detection. For research use only.

Not for diagnostic or therapeutic procedures.

[www.novusbio.com](http://www.novusbio.com) - P: 303.730.1950 - P: 888.506.6887 - F: 303.730.1966 - [technical@novusbio.com](mailto:technical@novusbio.com)

Novus kits are guaranteed for 6 months from date of receipt

---

# Asprosin Antibody Pair

Cat.# NBP2-78856

For Research Use Only

December-21-2017

---

## 1. Intended Use

The Asprosin Antibody Pair contains key reagents required to develop a sandwich ELISA to measure human Asprosin. The assay procedure has been optimized for cell culture supernatant.

## 2. Materials Provided

Standard	1 vial	(1 µg) ( <i>lyophilized</i> )	(STD)
Coating Antibody	1 vial	(120 µl)	(COAT)
Detection Antibody	1 vial	(60 µl)	(DET)
Streptavidin-HRP	1 vial	(10 µg) ( <i>lyophilized</i> )	(STREP)

## 3. Materials Required

- PBS: 137mM NaCl, 2.7mM KCl, 8.1mM Na<sub>2</sub>HPO<sub>4</sub>, 1.5mM KH<sub>2</sub>PO<sub>4</sub>, pH 7.2, 0.2µM filtered
- Wash Buffer: 0.1% Tween® 20 in PBS
- Blocking Buffer: 2% BSA (ELISA grade) in PBS, 0.2µM filtered.
- ELISA Buffer: 0.2% BSA (ELISA grade) and 0.05% Tween® 20 in PBS
- TMB: Tetramethylbenzidine
- Plates: Nunc-Immuno MaxiSorp
- Stop Solution: 2M sulphuric acid (H<sub>2</sub>SO<sub>4</sub>)
- Distilled or deionized water

## 4. Product Specifications

- Number of Assays: Contains sufficient materials to run ELISAs on 5 x 96-well plates
- Range: 0.156 ng/ml to 10 ng/ml
- Specificity: Recognizes human Asprosin
- Stability: Stable at least 1 year after receipt when stored at -20°C.

## 5. General ELISA Protocol

### a) Reagent Preparation

- Dilute the desired amount of Coating Antibody (COAT) (1 mg/ml) (mouse monoclonal antibody) to 2 µg/ml in PBS without carrier protein and use it fresh.
- Dilute the desired amount of Detection Antibody (DET) (1 mg/ml) (mouse monoclonal antibody) to 1 µg/ml in ELISA Buffer and use it fresh.
- Reconstitute the Streptavidin-HRP (HRP) with 100 µl ELISA Buffer. After reconstitution, prepare aliquots and store the reconstituted HRP at -20°C. Avoid freeze/thaw cycles. Dilute the reconstituted Streptavidin-HRP to the working concentration by adding 10 µl in 10 ml of ELISA Buffer (1:1000).
- Reconstitute the Standard Protein (STD) (recombinant human Asprosin) with 100 µl ELISA Buffer to obtain a concentration of 10 µg/ml. After reconstitution, prepare aliquots and store the reconstituted standard at -20°C. Avoid freeze/thaw cycles. A standard curve using 2-fold serial dilutions in ELISA Buffer is recommended. Suggested standard points are 10 ng/ml, 5 ng/ml, 2.5 ng/ml, 1.25 ng/ml, 0.625 ng/ml, 0.3125 ng/ml, 0.15625 ng/ml and 0 ng/ml.
- Cell culture supernatants are diluted in ELISA buffer.

*Note that diluted reagents described in this section are not stable and cannot be stored.*

### b) Plate Preparation

1. Coat the wells by adding 100 µl/well of diluted Coating Antibody (2 µg/ml) (see section Reagent Preparation) to a 96-well ELISA microplate (Nunc MaxiSorp™ flat-bottom 96 well plate is suggested). Cover the plate with plastic film and leave overnight (O/N) at 4°C.
2. Aspirate the coated wells. Remove any remaining liquid by inverting the plate and blotting it against clean absorbent paper.
3. Block plates by adding 200 µl of Blocking Buffer for 2 h at room temperature (RT).
4. Aspirate the coated wells and add 300 µl of Wash Buffer using a multichannel pipette or autowasher. Repeat the process for a total of five washes. Complete removal of liquid at each step is essential for good performance. After the last wash, remove any remaining Wash Buffer by inverting the plate and blotting it against clean absorbent paper.

### c) Assay Procedure

1. Add a total of 100 µl/well of cell culture supernatant (diluted in ELISA Buffer) or standard protein (see section Reagent Preparation) to the plate.
2. Cover the plate with plastic film and incubate for 2 h at RT.
3. Repeat the aspiration/wash as in step 4 of Plate preparation.
4. Add 100 µl/well of the diluted Detection Antibody (1 µg/ml) (see section Reagent Preparation).
5. Cover the plate with plastic film and incubate for one hour at RT.
6. Repeat the aspiration/wash as in step 4 of Plate preparation.
7. Add 100 µl to each well of the diluted Streptavidin-HRP (see section Reagent Preparation).
8. Cover the plate with plastic film and incubate for 30 min at RT.
9. Repeat the aspiration/wash as in step 4 of Plate preparation.
10. Substrate development is conducted by addition of 100 µl to each well of ready-to-use TMB for 10-20 min at RT.
11. Stop the reaction by adding 50 µl of Stop Solution (2M H<sub>2</sub>SO<sub>4</sub>). Tap the plate gently to ensure thorough mixing.
12. Measure the OD at 450 nm in an ELISA reader.

## 6. Technical Hints

- Once reagents have been added to the plate, DO NOT let the plate dry at any time during the assay.
- It is recommended that all standards and samples be assayed in duplicate.
- Avoid microbial contamination of reagents and equipment. Automated plate washers can become contaminated thereby causing assay variability. Buffers containing a large quantity of proteins should be made under sterile conditions and stored at 2-8°C or be prepared fresh daily.
- Vigorous plate washing is essential.
- Avoid exposing reagents to excessive heat or light during storage and incubation.
- Wear gloves while performing the assay to avoid contact with samples and reagents. Please follow proper disposal procedure.
- The Stop Solution (STOP) consists of sulfuric acid. Although diluted, the Stop Solution should be handled with gloves, eye protection and protective clothing.

## 7. Calculation of Results

- Average the duplicate readings for each standard, control and sample and subtract the average blank value.
- Generate the standard curve by plotting the corresponding human Asprosin concentration (ng/ml) on the vertical (Y) axis vs. the average absorbance obtained for each standard concentration on the horizontal axis (see 8. Expected Standard Curve). Calculate results using graph paper or curve-fitting statistical software. The amount of human Asprosin in each sample is determined by interpolating for the absorbance value (Y axis) using the standard curve.
- If the test samples were diluted, multiply the interpolated values by the dilution factor to calculate ng/ml of human Asprosin in the samples.

## 8. Expected Standard Curve

The following curve is obtained using the different concentrations of standard as described in this protocol:

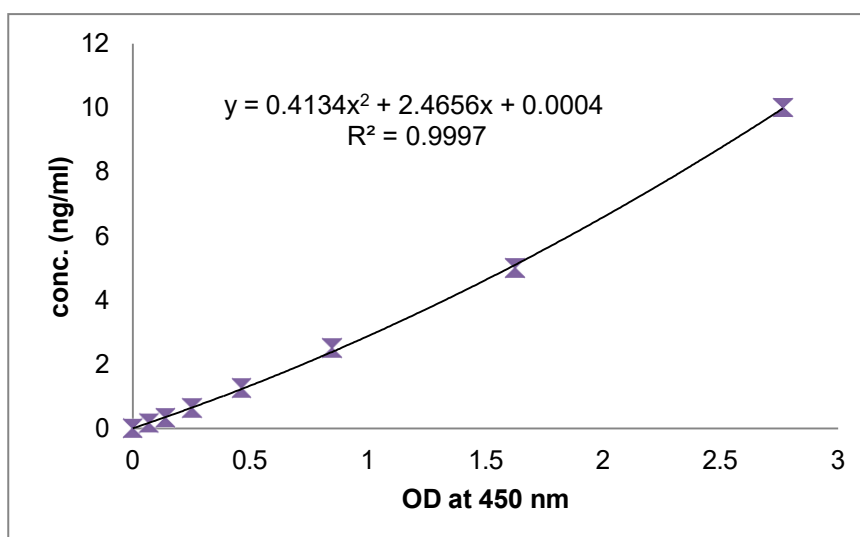


Figure: Standard Curve