



ELISA PRODUCT INFORMATION & MANUAL

Human Cathepsin G ELISA Kit ***NBP2-60614***

Enzyme-linked Immunosorbent Assay for quantitative detection of Human Cathepsin G. For research use only.
Not for diagnostic or therapeutic procedures.

Assay Summary

Step 1. Add 50 μ l of Standard or Sample per well.
Incubate 2 hours.

Step 2. Wash, then add 50 μ l of Biotinylated Antibody per well.
Incubate 1 hour.

Step 3. Wash, then add 50 μ l of SP Conjugate per well.
Incubate 30 minutes.

Step 4. Wash, then add 50 μ l of Chromogen Substrate per well.
Incubate 20 minutes.

Step 5. Add 50 μ l of Stop Solution per well.
Read at 450 nm immediately.

Symbol Key



Consult instructions for use.

	1	2	3	4	5	6	7	8	9	10	11	12
A												
B												
C												
D												
E												
F												
G												
H												

Assay Template

Human Cathepsin G ELISA Kit

Catalog No. NBP2-60614

Lot No. 063161712

Introduction

Cathepsin G (CATG, CTSG, CG), a member of the peptidase S1 protein family, is a serine protease with trypsin- and chymotrypsin-like specificity. Mature CATG contains 235 amino acid residues and weighs 26 kDa (1). It is mainly expressed in neutrophils and monocytes at the site of inflammation, stored in azurophilic granules, and released upon degranulation. After being released into the plasma, it cleaves extracellular matrix proteins and acts on a variety of plasma proteins (2). It also cleaves complement C3 into C3a- and C3b-like fragments (3). CATG plays important roles in the killing and digestion of engulfed pathogens, local destruction of connective tissue at sites of injury, and antimicrobial activity (4-5).

Principle of the Assay

The AssayMax™ Human Cathepsin G ELISA (Enzyme-Linked Immunosorbent Assay) Kit is designed for detection of cathepsin G in human **plasma, serum, saliva, and cell culture samples**. This assay employs a quantitative **sandwich enzyme immunoassay** technique that measures human cathepsin G in approximately 4 hours. A polyclonal antibody specific for human cathepsin G has been pre-coated onto a 96-well microplate with removable strips. Cathepsin G in standards and samples is sandwiched by the immobilized antibody and a biotinylated polyclonal antibody specific for human cathepsin G, which is recognized by a streptavidin-peroxidase (SP) conjugate. All unbound material is washed away and a peroxidase enzyme substrate is added. The color development is stopped and the intensity of the color is measured.

Caution and Warning

- This product is for **Research Use Only** and is not intended for use in diagnostic procedures.
- Prepare all reagents (diluent buffer, wash buffer, standard, biotinylated antibody, and SP conjugate) as instructed, prior to running the assay.
- Prepare all samples prior to running the assay. The dilution factors for the samples are suggested in this insert. However, the user should determine the optimal dilution factor.

- Spin down the SP conjugate vial and the biotinylated antibody vial before opening and using contents.
- The Stop Solution is an acidic solution.
- The kit should not be used beyond the expiration date.

Reagents

- **Human Cathepsin G Microplate:** A 96-well polystyrene microplate (12 strips of 8 wells) coated with a polyclonal antibody against human cathepsin G.
- **Sealing Tapes:** Each kit contains 3 precut, pressure sensitive sealing tapes that can be cut to fit the format of the individual assay.
- **Human Cathepsin G Standard:** Human cathepsin G in a buffered protein base (60 ng, lyophilized).
- **Biotinylated Human Cathepsin G Antibody (50x):** A 50-fold concentrated biotinylated polyclonal antibody against human cathepsin G (120 µl).
- **EIA Diluent Concentrate (10x):** A 10-fold concentrated buffered protein base (20 ml).
- **Wash Buffer Concentrate (20x):** A 20-fold concentrated buffered surfactant (30 ml, 2 bottles).
- **SP Conjugate (100x):** A 100-fold concentrate (80 µl).
- **Chromogen Substrate (1x):** A stabilized peroxidase chromogen substrate tetramethylbenzidine (8 ml).
- **Stop Solution (1x):** A 0.5 N hydrochloric acid solution to stop the chromogen substrate reaction (12 ml).

Storage Condition

- Upon arrival, immediately store components of the kit at recommended temperatures up to the expiration date.
- Store SP Conjugate and Biotinylated Antibody at -20°C.
- Store Microplate, Diluent Concentrate (10x), Wash Buffer, StopSolution, and Chromogen Substrate at 2-8°C.
- Unused microplate wells may be returned to the foil pouch with the desiccant packs and resealed. May be stored for up to 30 days in a vacuum desiccator.
- Diluent (1x) may be stored for up to 30 days at 2-8°C.
- Store Standard at 2-8°C before reconstituting with Diluent and at -20°C after reconstituting with Diluent.

Other Supplies Required

- Microplate reader capable of measuring absorbance at 450 nm.
- Pipettes (1-20 µl, 20-200 µl, 200-1000 µl, and multiple channel).
- Deionized or distilled reagent grade water.

Sample Collection, Preparation, and Storage

- **Plasma:** Collect plasma using one-tenth volume of 0.1 M sodium citrate as an anticoagulant. Centrifuge samples at 3000 x *g* for 10 minutes and collect plasma. The sample is suggested for use at 1x; however, user should determine optimal dilution factor depending on application needs. The undiluted samples can be stored at -20°C or below for up to 3 months. Avoid repeated freeze-thaw cycles (EDTA or Heparin can also be used as an anticoagulant).
- **Serum:** Samples should be collected into a serum separator tube. After clot formation, centrifuge samples at 3000 x *g* for 10 minutes and remove serum. The sample is suggested for use at 1x; however, user should determine optimal dilution factor depending on application needs. The undiluted samples can be stored at -20°C or below for up to 3 months. Avoid repeated freeze-thaw cycles.
- **Saliva:** Collect saliva using sample tube. Centrifuge samples at 800 x *g* for 10 minutes. The sample is suggested for use at 1x; however, user should determine optimal dilution factor depending on application needs. The undiluted samples can be stored at -20°C or below for up to 3 months. Avoid repeated freeze-thaw cycles.
- **Cell Culture Supernatants:** Centrifuge cell culture media at 3000 x *g* for 10 minutes at 4°C to remove debris and collect supernatants. Samples can be stored at -20°C or below. Avoid repeated freeze-thaw cycles.

Refer to Dilution Guidelines for further instruction.

Guidelines for Dilutions of 100-fold or Greater <i>(for reference only; please follow the insert for specific dilution suggested)</i>	
100x	10000x
A) 4 µl sample : 396 µl buffer (100x) = 100-fold dilution <i>Assuming the needed volume is less than or equal to 400 µl.</i>	A) 4 µl sample : 396 µl buffer (100x) B) 4 µl of A : 396 µl buffer (100x) = 10000-fold dilution <i>Assuming the needed volume is less than or equal to 400 µl.</i>
1000x	100000x
A) 4 µl sample : 396 µl buffer (100x) B) 24 µl of A : 216 µl buffer (10x) = 1000-fold dilution <i>Assuming the needed volume is less than or equal to 240 µl.</i>	A) 4 µl sample : 396 µl buffer (100x) B) 4 µl of A : 396 µl buffer (100x) C) 24 µl of B : 216 µl buffer (10x) = 100000-fold dilution <i>Assuming the needed volume is less than or equal to 240 µl.</i>

Reagent Preparation

- Freshly dilute all reagents and bring all reagents to room temperature before use.
- EIA Diluent Concentrate (10x):** If crystals have formed in the concentrate, mix gently until the crystals have completely dissolved. Dilute the EIA Diluent Concentrate 10-fold with reagent grade water to produce a 1x solution. Store for up to 30 days at 2-8°C.
- Human Cathepsin G Standard:** Reconstitute the Human Cathepsin G Standard (60 ng) with 0.6 ml of EIA Diluent to generate a 100 ng/ml standard stock solution. Allow the vial to sit for 10 minutes with gentle agitation prior to making dilutions. Prepare duplicate or triplicate standard points by serially diluting from the standard stock solution (100 ng/ml) 2-fold with equal volume of EIA Diluent to produce 50, 25, 12.5, 6.25, and 3.125 ng/ml solutions. EIA Diluent serves as the zero standard (0 ng/ml). Any remaining stock solution should be stored at -20°C and used within 30 days. Avoid repeated freeze-thaw cycles.

Standard Point	Dilution	[Cathepsin G] (ng/ml)
P1	1 part Standard (100 ng/ml)	100
P2	1 part P1 + 1 part EIA Diluent	50
P3	1 part P2 + 1 part EIA Diluent	25
P4	1 part P3 + 1 part EIA Diluent	12.5
P5	1 part P4 + 1 part EIA Diluent	6.25
P6	1 part P5 + 1 part EIA Diluent	3.125
P7	EIA Diluent	0.0

- **Biotinylated Human Cathepsin G Antibody (50x):** Spin down the antibody briefly and dilute the desired amount of the antibody 50-fold with EIA Diluent to produce a 1x solution. The undiluted antibody should be stored at -20°C.
- **Wash Buffer Concentrate (20x):** If crystals have formed in the concentrate, mix gently until the crystals have completely dissolved. Dilute the Wash Buffer Concentrate 20-fold with reagent grade water to produce a 1x solution.
- **SP Conjugate (100x):** Spin down the SP Conjugate briefly and dilute the desired amount of the conjugate 100-fold with EIA Diluent to produce a 1x solution. The undiluted conjugate should be stored at -20°C.

Assay Procedure

- Prepare all reagents, standard solutions, and samples as instructed. Bring all reagents to room temperature before use. The assay is performed at room temperature (20-25°C).
- Remove excess microplate strips from the plate frame and return them immediately to the foil pouch with desiccants inside. Reseal the pouch securely to minimize exposure to water vapor and store in a vacuum desiccator.
- Add 50 µl of Human Cathepsin G Standard or sample to each well. Gently tap plate to thoroughly coat the wells. Break any bubbles that may have formed. Cover wells with a sealing tape and incubate for 2 hours. Start the timer after the last addition.
- Wash five times with 200 µl of Wash Buffer manually. Invert the plate each time and decant the contents; hit 4-5 times on absorbent material to completely remove the liquid. If using a machine, wash six times with 300 µl of Wash Buffer and then invert the plate, decanting the contents; hit 4-5 times on absorbent material to completely remove the liquid.
- Add 50 µl of Biotinylated Human Cathepsin G Antibody to each well. Gently tap plate to thoroughly coat the wells. Break any bubbles that may have formed. Cover wells with a sealing tape and incubate for 1 hour.
- Wash the microplate as described above.
- Add 50 µl of SP Conjugate to each well. Gently tap plate to thoroughly coat the wells. Break any bubbles that may have formed. Cover wells with a sealing tape and incubate for 30 minutes. Turn on the microplate reader and set up the program in advance.
- Wash the microplate as described above.
- Add 50 µl of Chromogen Substrate to each well. Gently tap plate to thoroughly coat the wells. Break any bubbles that may have formed. Incubate for 20 minutes or until the optimal blue color density develops.

- Add 50 μ l of Stop Solution to each well. The color will change from blue to yellow. Gently tap plate to ensure thorough mixing. Break any bubbles that may have formed.
- Read the absorbance on a microplate reader at a wavelength of 450 nm **immediately**. If wavelength correction is available, subtract readings at 570 nm from those at 450 nm to correct optical imperfections. Otherwise, read the plate at 450 nm only. Please note that some unstable black particles may be generated at high concentration points after stopping the reaction for about 10 minutes, which will reduce the readings.

Data Analysis

- Calculate the mean value of the duplicate or triplicate readings for each standard and sample.
- To generate a standard curve, plot the graph using the standard concentrations on the x-axis and the corresponding mean 450 nm absorbance (OD) on the y-axis. The best-fit line can be determined by regression analysis using log-log or four-parameter logistic curve-fit.
- Determine the unknown sample concentration from the Standard Curve and multiply the value by the dilution factor.

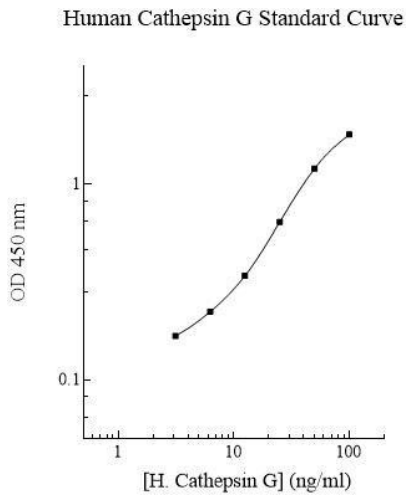
Typical Data

- The typical data is provided for reference only. Individual laboratory means may vary from the values listed. Variations between laboratories may be caused by technique differences.

Standard Point	ng/ml	OD	Average OD
P1	100	1.811 1.755	1.783
P2	50	1.203 1.185	1.194
P3	25	0.642 0.636	0.639
P4	12.5	0.343 0.335	0.339
P5	6.25	0.225 0.219	0.222
P6	3.125	0.168 0.166	0.167
P7	0.0	0.126 0.124	0.125

Standard Curve

- The curve is provided for illustration only. A standard curve should be generated each time the assay is performed.



Performance Characteristics

- The minimum detectable dose of human cathepsin G as calculated by 2SD from the mean of a zero standard was established to be 3 ng/ml.
- Intra-assay precision was determined by testing three plasma samples twenty times in one assay.
- Inter-assay precision was determined by testing three plasma samples in twenty assays.

	Intra-Assay Precision			Inter-Assay Precision		
Sample	1	2	3	1	2	3
n	20	20	20	20	20	20
CV (%)	4.7%	5.0%	4.2%	10.0%	9.5%	9.8%
Average CV (%)	4.6%			9.8%		

Recovery

Standard Added Value	6.25 – 50 ng/ml
Recovery %	92 – 114%
Average Recovery %	96%

Linearity

- Plasma samples were serially diluted to test for linearity.

Average Percentage of Expected Value (%)	
Sample Dilution	Plasma
1x	100%
2x	108%
4x	104%

Cross-Reactivity

Species	Cross-Reactivity (%)
Canine	20%
Bovine	None
Monkey	65%
Mouse	10%
Rat	30%
Swine	40%
Rabbit	None
Protein	Cross-Reactivity (%)
Cathepsin E	None
Cathepsin F	None
Cathepsin S	None
Granzyme B (CTSL)	None

Troubleshooting

Issue	Causes	Course of Action
Low Precision	Use of expired components	<ul style="list-style-type: none"> Check the expiration date listed before use. Do not interchange components from different lots.
	Improper wash step	<ul style="list-style-type: none"> Check that the correct wash buffer is being used. Check that all wells are empty after aspiration. Check that the microplate washer is dispensing properly. If washing by pipette, check for proper pipetting technique.
	Splashing of reagents while loading wells	<ul style="list-style-type: none"> Pipette properly in a controlled and careful manner.
	Inconsistent volumes loaded into wells	<ul style="list-style-type: none"> Pipette properly in a controlled and careful manner. Check pipette calibration. Check pipette for proper performance.
	Insufficient mixing of reagent dilutions	<ul style="list-style-type: none"> Thoroughly agitate the lyophilized components after reconstitution. Thoroughly mix dilutions.

	Improperly sealed microplate	<ul style="list-style-type: none"> • Check the microplate pouch for proper sealing. • Check that the microplate pouch has no punctures. • Check that three desiccants are inside the microplate pouch prior to sealing.
Unexpectedly Low or High Signal Intensity	Microplate was left unattended between steps	<ul style="list-style-type: none"> • Each step of the procedure should be performed uninterrupted.
	Omission of step	<ul style="list-style-type: none"> • Consult the provided procedure for complete list of steps.
	Steps performed in incorrect order	<ul style="list-style-type: none"> • Consult the provided procedure for the correct order.
	Insufficient amount of reagents added to wells	<ul style="list-style-type: none"> • Check pipette calibration. • Check pipette for proper performance.
	Wash step was skipped	<ul style="list-style-type: none"> • Consult the provided procedure for all wash steps.
	Improper wash buffer	<ul style="list-style-type: none"> • Check that the correct wash buffer is being used.
	Improper reagent preparation	<ul style="list-style-type: none"> • Consult reagent preparation section for the correct dilutions of all reagents.
	Insufficient or prolonged incubation periods	<ul style="list-style-type: none"> • Consult the provided procedure for correct incubation time.
Deficient Standard Curve Fit	Non-optimal sample dilution	<ul style="list-style-type: none"> • Sandwich ELISA: If samples generate OD values higher than the highest standard point (P1), dilute samples further and repeat the assay. • Competitive ELISA: If samples generate OD values lower than the highest standard point (P1), dilute samples further and repeat the assay. • User should determine the optimal dilution factor for samples.
	Contamination of reagents	<ul style="list-style-type: none"> • A new tip must be used for each addition of different samples or reagents during the assay procedure.
	Contents of wells evaporate	<ul style="list-style-type: none"> • Verify that the sealing film is firmly in place before placing the assay in the incubator or at room temperature.
	Improper pipetting	<ul style="list-style-type: none"> • Pipette properly in a controlled and careful manner. • Check pipette calibration. • Check pipette for proper performance.
	Insufficient mixing of reagent dilutions	<ul style="list-style-type: none"> • Thoroughly agitate the lyophilized components after reconstitution. • Thoroughly mix dilutions.

References

- (1) Salvesen G *et al.* (1987) *Biochemistry*. 1987 Apr 21; 26 (8): 2289-2293
- (2) Tausch L *et al.* (2009) *J. Immunol.* 183 (5): 3433-3442
- (3) Maisson CM *et al.* (1991) *J. Immunol.* 147 (3): 921-926
- (4) Hohn PA *et al.* (1989) *J. Biol. Chem.* 264 (23): 13412-13419
- (5) Gabay JE *et al.* (1989) *Proc. Natl. Acad. Sci. U S A.* 86 (14): 5610-5614

Version 1.0