



ELISA PRODUCT INFORMATION & MANUAL

Human IL-13 ELISA Kit (Colorimetric) *NBP1-91176*

Enzyme-linked Immunosorbent Assay for quantitative detection. For research use only.

Not for diagnostic or therapeutic procedures.

www.novusbio.com - P: 303.730.1950 - P: 888.506.6887 - F: 303.730.1966 - technical@novusbio.com

Novus kits are guaranteed for 6 months from date of receipt

Human IL-13 ELISA Kit

Enzyme-linked Immunosorbent Assay for quantitative detection of human IL-13

Catalog Number NBP1-91176

WARNING! Read the Safety Data Sheets (SDSs) and follow the handling instructions. Wear appropriate protective eyewear, clothing, and gloves. Safety Data Sheets (SDSs) are available from Technical Support.

Product description

The Human IL-13 ELISA Kit is an enzyme-linked immunosorbent assay for the quantitative detection of human IL-13.

Summary

Interleukin-13 (IL-13) was first described as a protein product, designated P600, encoded by an RNA produced by activated mouse Th2 cells. More recently, the cDNA cloning of the human homologue of P600, human IL-13, has been reported. Human IL-13 is a nonglycosylated protein of 132 amino acids with a molecular weight of 12 kDa. The IL-13 gene is located on chromosome 5q23-31, in the same region as the genes encoding IL-3, IL-4, IL-5 and GM-CSF. It is produced by activated CD4+ and CD8+ T cells, but the expression seems to be more abundant in CD4+ T cells. Although it is a Th2 cytokine in the mouse, it appears to be produced by Th0, Th1, and Th2-like human T cell clones.

IL-13 is a pleiotropic cytokine whose spectrum of action encompasses B cells, mononuclear phagocytes, and large granular lymphocytes. IL-13 induces CD23 expression on B cells, promotes B cell proliferation in combination with anti-Ig or CD40 antibodies, and stimulates secretion IgE, and IgG4. IL-13 has also been shown to prolong survival of human monocytes and increases surface expression of MHC class II, CD23, and members of the integrin superfamily, like CD11b, CD11c, CD18, CD29 and CD49e. IL-13 inhibits the production of a series of cytokines like IL-1, IL-6, TNF α , and IL-8 by activated human monocytes. IL-13 induces IFN γ production by NK cells.

Principles of the test

An anti-human IL-13 coating antibody is adsorbed onto microwells.

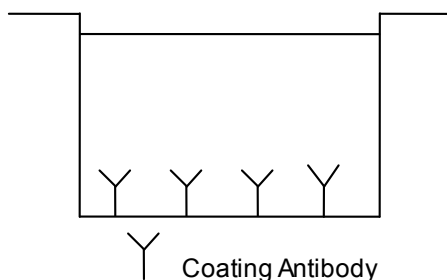


Fig. 1 Coated microwell

Human IL-13 present in the sample or standard binds to antibodies adsorbed to the microwells. A conjugate mixture (biotin-conjugated anti-human IL-13 antibody and Streptavidin-HRP) is added and binds to human IL-13 captured by the first antibody.

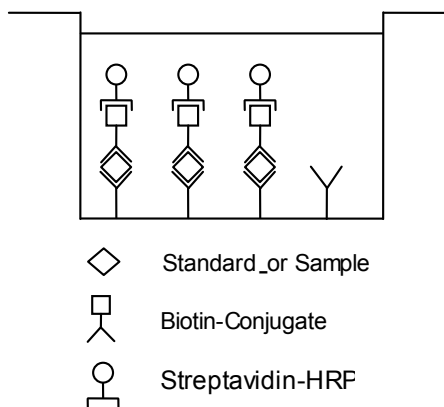


Fig. 2 First incubation

Following incubation unbound biotin-conjugated anti-human IL-13 antibody and Streptavidin-HRP is removed during a wash step, and substrate solution reactive with HRP is added to the wells.

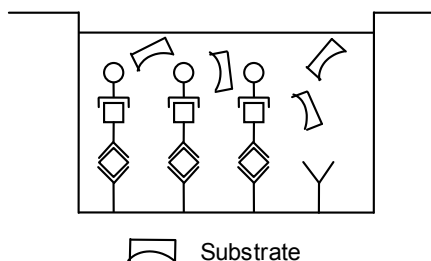


Fig. 3 Second incubation

A colored product is formed in proportion to the amount of human IL-13 present in the sample or standard. The reaction is terminated by addition of acid and absorbance is measured at 450 nm. A standard curve is prepared from 7 human IL-13 standard dilutions and human IL-13 sample concentration determined.

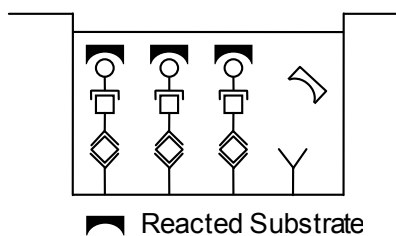


Fig. 4 Stop reaction

Reagents provided

Reagents for human IL-13 ELISA NBP1-91176 (96 tests)

- 1 aluminum pouch with a Microwell Plate (12 strips of 8 wells each) coated with monoclonal antibody to human IL-13
- 1 vial (70 μ L) Biotin-Conjugate anti-human IL-13 monoclonal antibody
- 1 vial (150 μ L) Streptavidin-HRP

2 vials human IL-13 Standard lyophilized, 200 pg/mL upon reconstitution

1 vial (5 mL) Assay Buffer Concentrate 20x (PBS with 1% Tween 20, 10% BSA)

1 bottle (50 mL) Wash Buffer Concentrate 20x (PBS with 1% Tween 20)

1 vial (15 mL) Substrate Solution (tetramethyl-benzidine)

1 vial (15 mL) Stop Solution (1M Phosphoric acid)

2 Adhesive Films

Reagents for human IL-13 ELISA NBP1-91176 (10x96 tests)

10 aluminum pouches with a Microwell Plate (12 strips of 8 wells each) coated with monoclonal antibody to human IL-13

10 vials (70 µL) Biotin-Conjugate anti-human IL-13 monoclonal antibody

10 vials (150 µL) Streptavidin-HRP

10 vials human IL-13 Standard lyophilized, 200 pg/mL upon reconstitution

2 vials (5 mL) Assay Buffer Concentrate 20x (PBS with 1% Tween 20, 10% BSA)

3 bottles (50 mL) Wash Buffer Concentrate 20x (PBS with 1% Tween 20)

10 vials (15 mL) Substrate Solution (tetramethyl-benzidine)

1 vial (100 mL) Stop Solution (1M Phosphoric acid)

10 Adhesive Films

Storage instructions – ELISA kit

Store kit reagents between 2° and 8°C. Immediately after use remaining reagents should be returned to cold storage (2° to 8°C). Expiry of the kit and reagents is stated on labels.

Expiry of the kit components can only be guaranteed if the components are stored properly, and if, in case of repeated use of one component, this reagent is not contaminated by the first handling.

Sample collection and storage instructions

Cell culture supernatant, serum, plasma (EDTA, citrate, heparin) and amniotic fluid were tested with this assay. Other biological samples might be suitable for use in the assay. Remove serum or plasma from the clot or cells as soon as possible after clotting and separation. Samples containing a visible precipitate must be clarified prior to use in the assay. Do not use grossly hemolyzed or lipemic samples.

Samples should be aliquoted and must be stored frozen at -20°C to avoid loss of bioactive human IL-13. If samples are to be run within 24 hours, they may be stored at 2-8°C (refer to "Sample stability" on page 5). Avoid repeated freeze-thaw cycles. Prior to assay, the frozen sample should be brought to room temperature slowly and mixed gently.

Materials required but not provided

- 5 mL and 10 mL graduated pipettes
- 5 µL to 1000 µL adjustable single channel micropipettes with disposable tips
- 50 µL to 300 µL adjustable multichannel micropipette with disposable tips
- Multichannel micropipette reservoir
- Beakers, flasks, cylinders necessary for preparation of reagents
- Device for delivery of wash solution (multichannel wash bottle or automatic wash system)
- Microwell strip reader capable of reading at 450 nm (620 nm as optional reference wave length)
- Glass-distilled or deionized water
- Statistical calculator with program to perform regression analysis

Precautions for use

- All chemicals should be considered as potentially hazardous. We therefore recommend that this product is handled only by those persons who have been trained in laboratory techniques and that it is used in accordance with the principles of good laboratory practice. Wear suitable protective clothing such as laboratory overalls, safety glasses, and gloves. Care should be taken to avoid contact with skin or eyes. In the case of contact with skin or eyes wash immediately with water. See material safety data sheet(s) and/or safety statement(s) for specific advice.
- Reagents are intended for in vitro diagnostic use and are not for use in therapeutic procedures.
- Do not mix or substitute reagents with those from other lots or other sources.
- Do not use kit reagents beyond expiration date on label.
- Do not expose kit reagents to strong light during storage or incubation.
- Do not pipet by mouth.
- Do not eat or smoke in areas where kit reagents or samples are handled.
- Avoid contact of skin or mucous membranes with kit reagents or samples.
- Rubber or disposable latex gloves should be worn while handling kit reagents or samples.
- Avoid contact of substrate solution with oxidizing agents and metal.
- Avoid splashing or generation of aerosols.
- To avoid microbial contamination or cross-contamination of reagents or samples that may invalidate the test, use disposable pipette tips and/or pipettes.
- Use clean, dedicated reagent trays for dispensing the conjugate and substrate reagent.
- Exposure to acid inactivates the conjugate.
- Glass-distilled water or deionized water must be used for reagent preparation.
- Substrate solution must be at room temperature prior to use.
- Decontaminate and dispose samples and all potentially contaminated materials as if they could contain infectious agents. The preferred method of decontamination is autoclaving for a minimum of 1 hour at 121.5°C.
- Liquid wastes not containing acid and neutralized waste may be mixed with sodium hypochlorite in volumes such that the final mixture contains 1.0% sodium hypochlorite. Allow 30 minutes for effective decontamination. Liquid waste containing acid must be neutralized prior to the addition of sodium hypochlorite.

Preparation of reagents

- Buffer Concentrates should be brought to room temperature and should be diluted before starting the test procedure.
- If crystals have formed in the Buffer Concentrates, warm them gently until they have completely dissolved.

Wash buffer (1x)

- Pour entire contents (50 mL) of the Wash Buffer Concentrate (20x) into a clean 1000 mL graduated cylinder. Bring to final volume of 1000 mL with glass-distilled or deionized water. Mix gently to avoid foaming.
- Transfer to a clean wash bottle and store at 2° to 25°C. Please note that Wash Buffer (1x) is stable for 30 days.
- Wash Buffer (1x) may also be prepared as needed according to the following table:

Number of Strips	Wash Buffer Concentrate (20x) (mL)	Distilled Water (mL)
1 - 6	25	475
1 - 12	50	950

Assay buffer (1x)

1. Pour the entire contents (5 mL) of the Assay Buffer Concentrate (20x) into a clean 100 mL graduated cylinder. Bring to final volume of 100 mL with distilled water. Mix gently to avoid foaming.
2. Store at 2° to 8°C. Please note that the Assay Buffer (1x) is stable for 30 days.
3. Assay Buffer (1x) may also be prepared as needed according to the following table:

Number of Strips	Assay Buffer Concentrate (20x) (mL)	Distilled Water (mL)
1 - 6	2.5	47.5
1 - 12	5.0	95.0

Conjugate mixture

Note: The Conjugate Mixture should be used within 30 minutes after dilution.

Make a 1:100 dilution of the concentrated Biotin-Conjugate solution and a 1:50 dilution of the concentrated HRP-Streptavidin solution with Assay Buffer (1x) in a clean plastic tube as needed according to the following table:

Number of Strips	Biotin-Conjugate (mL)	Streptavidin-HRP (mL)	Assay Buffer (1x) (mL)
1 - 6	0.03	0.06	2.91
1 - 12	0.06	0.12	5.82

Human IL-13 standard

1. Reconstitute human IL-13 standard by addition of distilled water.
2. Reconstitution volume is stated on the label of the standard vial. Allow the reconstituted standard to sit for 10-30 minutes. Swirl or mix gently to insure complete and homogeneous solubilization (concentration of reconstituted standard = 200 pg/mL).
3. After usage remaining standard cannot be stored and has to be discarded.
4. Standard dilutions can be prepared directly on the microwell plate (see "Test protocol" on page 3) or alternatively in tubes (see "External standard dilution" on page 3).

External standard dilution

1. Label 7 tubes, one for each standard point: S1, S2, S3, S4, S5, S6, S7
2. Prepare 1:2 serial dilutions for the standard curve as follows:
Pipette 225 µL of Assay Buffer (1x) into each tube.
3. Pipette 225 µL of reconstituted standard (concentration = 200 pg/mL) into the first tube, labeled S1, and mix (concentration of standard 1 = 100 pg/mL).
4. Pipette 225 µL of this dilution into the second tube, labeled S2, and mix thoroughly before the next transfer.
5. Repeat serial dilutions 5 more times thus creating the points of the standard curve (see Figure 5).

Assay Buffer (1x) serves as blank.

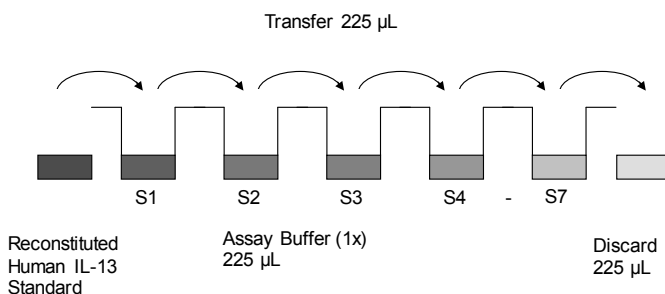


Fig. 5 Dilute standards - tubes

Test protocol

1. Determine the number of microwell strips required to test the desired number of samples plus appropriate number of wells needed for running blanks and standards. Each sample, standard, blank and optional control sample should be assayed in duplicate. Remove extra microwell strips from holder and store in foil bag with the desiccant provided at 2°-8°C sealed tightly.
2. Wash the microwell strips twice with approximately 400 µL Wash Buffer per well with thorough aspiration of microwell contents between washes. Allow the Wash Buffer to sit in the wells for about 10 – 15 seconds before aspiration. Take care not to scratch the surface of the microwells.
3. Standard dilution on the microwell plate (Alternatively the standard dilution can be prepared in tubes - see "External standard dilution" on page 3):

Add 100 µL of Assay Buffer (1x) in duplicate to all standard. Pipette 100 µL of prepared standard (see "Human IL-13 standard" on page 3, concentration = 200 pg/mL) in duplicate into well A1 and A2 (see Table 1). Mix the contents of wells A1 and A2 by repeated aspiration and ejection (concentration of standard 1, S1 = 100 pg/mL), and transfer 100 µL to wells B1 and B2, respectively (see Figure 6). Take care not to scratch the inner surface of the microwells. Continue this procedure 5 times, creating two rows of human IL-13 standard dilutions ranging from 100.0 to 1.6 pg/mL. Discard 100 µL of the contents from the last microwells (G1, G2) used.

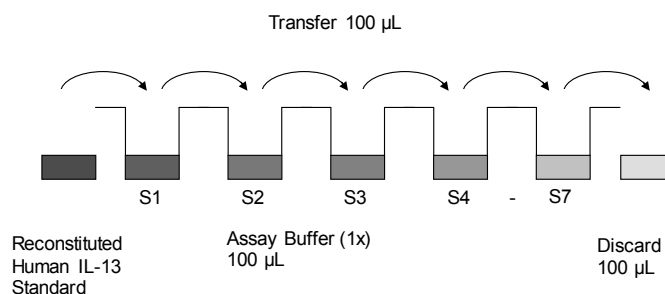


Fig. 6 Dilute standards - microwell plate

Table 1 Example of the arrangement of blanks, standards and samples in the microwell strips.

	1	2	3	4
A	Standard 1 100.0 pg/mL	Standard 1 100.0 pg/mL	Sample 1	Sample 1
B	Standard 2 50.0 pg/mL	Standard 2 50.0 pg/mL	Sample 2	Sample 2
C	Standard 3 25.0 pg/mL	Standard 3 25.0 pg/mL	Sample 3	Sample 3
D	Standard 4 12.5 pg/mL	Standard 4 12.5 pg/mL	Sample 4	Sample 4
E	Standard 5 6.3 pg/mL	Standard 5 6.3 pg/mL	Sample 5	Sample 5
F	Standard 6 3.1 pg/mL	Standard 6 3.1 pg/mL	Sample 6	Sample 6
G	Standard 7 1.6 pg/mL	Standard 7 1.6 pg/mL	Sample 7	Sample 7
H	Blank	Blank	Sample 8	Sample 8

In case of an external standard dilution (see "External standard dilution" on page 3), pipette 100 µL of these standard dilutions (S1 - S7) in the standard wells according to Table 1.

4. Add 100 µL of Assay Buffer (1x) in duplicate to the blank wells.
5. Add 50 µL of Assay Buffer (1x) to the sample wells.
6. Add 50 µL of each sample in duplicate to the sample wells.

7. Prepare Conjugate Mixture (see "Conjugate mixture" on page 3).
8. Add 50 μ L of Conjugate Mixture to all wells.
9. Cover with an adhesive film and incubate at room temperature (18 to 25°C) for 2 hours on a microplate shaker.
10. Remove adhesive film and empty wells. Wash microwell strips 3 times according to point 2. of the test protocol. Proceed immediately to the next step.
11. Pipette 100 μ L of TMB Substrate Solution to all wells.
12. Incubate the microwell strips at room temperature (18° to 25°C) for about 10 minutes. Avoid direct exposure to intense light.
The color development on the plate should be monitored and the substrate reaction stopped (see next point of this protocol) before positive wells are no longer properly recordable. Determination of the ideal time period for color development has to be done individually for each assay.
It is recommended to add the stop solution when the highest standard has developed a dark blue color. Alternatively the color development can be monitored by the ELISA reader at 620 nm. The substrate reaction should be stopped as soon as Standard 1 has reached an OD of 0.9 – 0.95.
13. Stop the enzyme reaction by quickly pipetting 100 μ L of Stop Solution into each well. It is important that the Stop Solution is spread quickly and uniformly throughout the microwells to completely inactivate the enzyme. Results must be read immediately after the Stop Solution is added or within one hour if the microwell strips are stored at 2 - 8°C in the dark.
14. Read absorbance of each microwell on a spectro-photometer using 450 nm as the primary wave length (optionally 620 nm as the reference wave length; 610 nm to 650 nm is acceptable). Blank the plate reader according to the manufacturer's instructions by using the blank wells. Determine the absorbance of both the samples and the standards.

Note: In case of incubation without shaking the obtained O.D. values may be lower than indicated below. Nevertheless the results are still valid.

Calculation of results

- Calculate the average absorbance values for each set of duplicate standards and samples. Duplicates should be within 20 percent of the mean value.
- Create a standard curve by plotting the mean absorbance for each standard concentration on the ordinate against the human IL-13 concentration on the abscissa. Draw a best fit curve through the points of the graph (a 5-parameter curve fit is recommended).
- To determine the concentration of circulating human IL-13 for each sample, first find the mean absorbance value on the ordinate and extend a horizontal line to the standard curve. At the point of intersection, extend a vertical line to the abscissa and read the corresponding human IL-13 concentration.
- If instructions in this protocol have been followed, samples have been diluted 1:2 (50 μ L sample + 50 μ L Assay Buffer (1x)) and the concentration read from the standard curve must be multiplied by the dilution factor ($\times 2$).
- Calculation of samples with a concentration exceeding standard 1 may result in incorrect, low human IL-13 levels. Such samples require further external predilution according to expected human IL-13 values with Assay Buffer (1x) in order to precisely quantitate the actual human IL-13 level.
- It is suggested that each testing facility establishes a control sample of known human IL-13 concentration and runs this additional control with each assay. If the values obtained are not within the expected range of the control, the assay results may be invalid.

- A representative standard curve is shown in Figure 7. This curve cannot be used to derive test results. Each laboratory must prepare a standard curve for each group of microwell strips assayed.

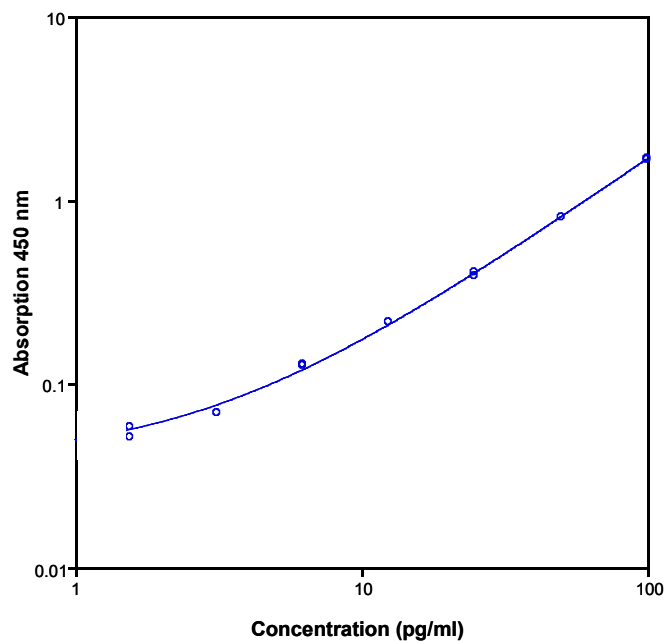


Fig. 7 Representative standard curve for human IL-13 ELISA. Human IL-13 was diluted in serial 2-fold steps in Assay Buffer (1x). Do not use this standard curve to derive test results. A standard curve must be run for each group of microwell strips assayed.

Table 2 Typical data using the human IL-13 ELISA

Measuring wavelength: 450 nm

Reference wavelength: 620 nm

Standard	Human IL-13 Concentration (pg/mL)	O.D. at 450 nm	Mean O.D. at 450 nm	C.V. (%)
1	100.0	1.693 1.659	1.676	1.4
2	50.0	0.807 0.814	0.811	0.6
3	25.0	0.403 0.388	0.396	2.7
4	12.5	0.216 0.218	0.217	0.7
5	6.3	0.126 0.127	0.127	0.6
6	3.1	0.07 0.07	0.07	0.0
7	1.6	0.058 0.051	0.055	9.1
Blank	0.0	0.019 0.021	0.020	5.0

The OD values of the standard curve may vary according to the conditions of assay performance (e.g. operator, pipetting technique, washing technique or temperature effects). Furthermore shelf life of the kit may affect enzymatic activity and thus color intensity. Values measured are still valid.

Limitations

- Since exact conditions may vary from assay to assay, a standard curve must be established for every run.
- Bacterial or fungal contamination of either screen samples or reagents or cross-contamination between reagents may cause erroneous results.

- Disposable pipette tips, flasks or glassware are preferred, reusable glassware must be washed and thoroughly rinsed of all detergents before use.
- Improper or insufficient washing at any stage of the procedure will result in either false positive or false negative results. Empty wells completely before dispensing fresh wash solution, fill with Wash Buffer as indicated for each wash cycle and do not allow wells to sit uncovered or dry for extended periods.
- The use of radioimmunoassay has significantly increased the number of patients with human anti-mouse IgG antibodies (HAMA). HAMA may interfere with assays utilizing murine monoclonal antibodies leading to both false positive and false negative results. Serum samples containing antibodies to murine immunoglobulins can still be analyzed in such assays when murine immunoglobulins (serum, ascitic fluid, or monoclonal antibodies of irrelevant specificity) are added to the sample.

Performance characteristics

Sensitivity

The limit of detection of human IL-13 defined as the analyte concentration resulting in an absorbance significantly higher than that of the dilution medium (mean plus 2 standard deviations) was determined to be 0.7 pg/mL (mean of 6 independent assays).

Reproducibility

Intra-assay

Reproducibility within the assay was evaluated in 3 independent experiments. Each assay was carried out with 6 replicates of 8 serum samples containing different concentrations of human IL-13. 2 standard curves were run on each plate. Data below show the mean human IL-13 concentration and the coefficient of variation for each sample (see Table 3). The calculated overall intra-assay coefficient of variation was 6.0%.

Table 3 The mean human IL-13 concentration and the coefficient of variation for each sample

Sample	Experiment	Mean Human IL-13 Concentration (pg/mL)	Coefficient of Variation (%)
1	1	103.54	2.0
	2	96.85	4.2
	3	89.21	3.2
2	1	71.18	8.7
	2	69.57	4.6
	3	75.89	11.1
3	1	57.62	10.0
	2	56.01	7.4
	3	57.12	7.0
4	1	44.55	8.8
	2	46.61	5.2
	3	47.00	7.2
5	1	33.20	7.6
	2	35.89	6.3
	3	35.54	11.8
6	1	31.04	6.1
	2	31.01	2.0
	3	28.16	2.0
7	1	22.86	7.7
	2	21.58	3.2
	3	21.63	4.2
8	1	16.43	6.2
	2	19.40	3.0
	3	18.48	5.8

Inter-assay

Assay to assay reproducibility within one laboratory was evaluated in 3 independent experiments. Each assay was carried out with 6

replicates of 8 serum samples containing different concentrations of human IL-13. 2 standard curves were run on each plate. Data below show the mean human IL-13 concentration and the coefficient of variation calculated on 18 determinations of each sample (see Table 4). The calculated overall inter-assay coefficient of variation was 4.6%.

Table 4 The mean human IL-13 concentration and the coefficient of variation of each sample

Sample	Mean Human IL-13 Concentration (pg/mL)	Coefficient of Variation (%)
1	96.53	7.4
2	72.21	4.5
3	56.94	1.5
4	46.05	2.9
5	35.01	3.5
6	30.07	5.5
7	22.02	3.3
8	18.01	8.4

Spike recovery

The spike recovery was evaluated by spiking 3 levels of human IL-13 into serum. Recoveries were determined in 3 independent experiments with 6 replicates each. The unspiked serum was used as blank in these experiments. The recovery ranged from 93–110% with an overall mean recovery of 101%.

Dilution parallelism

Four serum samples with different levels of human IL-13 were analyzed at serial 2-fold dilutions with 4 replicates each.

The recovery ranged from 93–123% with an overall recovery of 109%.

Sample	Dilution	Human IL-13 (pg/mL)		Recovery of expected concentration (%)
		Expected concentration	Observed concentration	
1	1:2	–	105.5	–
	1:4	52.8	54.6	104
	1:8	27.3	28.6	105
	1:16	14.3	13.4	94
2	1:2	–	84.5	–
	1:4	42.2	46.8	110
	1:8	23.4	28.9	123
	1:16	14.4	16.5	115
3	1:2	–	40.7	–
	1:4	20.4	24.3	120
	1:8	12.2	13.2	108
	1:16	6.6	7.2	109
4	1:2	–	24.7	–
	1:4	12.3	12.9	105
	1:8	6.5	7.7	119
	1:16	3.9	3.6	93

Sample stability

Freeze-Thaw stability

Aliquots of serum samples (spiked or unspiked) were stored at -20°C and thawed 5 times, and the human IL-13 levels determined. There was no significant loss of human IL-13 immunoreactivity detected by freezing and thawing.

Storage stability

Aliquots of serum samples (spiked or unspiked) were stored at -20°C, 2–8°C, room temperature, and at 37°C, and the human IL-13 level determined after 24 hours. There was no significant loss of human IL-13 immunoreactivity detected during storage under above conditions.

Comparison of serum and plasma

Serum as well as EDTA, citrate and heparin plasma obtained from identical individuals at the same time point, were evaluated. Human IL-13 levels were not significantly different and therefore all these blood preparations are suitable for human IL-13 determinations. Nevertheless it is highly recommended to assure the uniformity of blood preparations.

Specificity

The assay detects both natural and recombinant human IL-13. The interference of circulating factors of the immune system was evaluated by spiking these proteins at physiologically relevant concentrations into a human IL-13 positive serum. No cross-reactivity detected.

Expected values

A panel of 24 serum samples from randomly selected apparently healthy donors (males and females) was tested for human IL-13. The detected human IL-13 levels ranged between 0 and 44.4 pg/mL with a mean level of 8.2 pg/mL and a standard deviation of 12.1 pg/mL.

Calibration

The immunoassay is calibrated with highly purified recombinant human IL-13 which has been evaluated against the international Reference Standard NIBSC 94/622 and has been shown to be equivalent.

NIBSC 94/622 is quantitated in International Units (IU), 1IU corresponding to 1 ng human IL-13.

Reagent preparation summary

Wash buffer (1x)

Add Wash Buffer Concentrate 20x (50 mL) to 950 mL distilled water.

Number of Strips	Wash Buffer Concentrate (mL)	Distilled Water (mL)
1 - 6	25	475
1 - 12	50	950

Assay buffer (1x)

Add Assay Buffer Concentrate 20x (5 mL) to 95 mL distilled water.

Number of Strips	Assay Buffer Concentrate (mL)	Distilled Water (mL)
1 - 6	2.5	47.5
1 - 12	5.0	95.0

Conjugate mixture

Make a 1:100 dilution of Biotin-Conjugate and a 1:50 dilution of Streptavidin-HRP in Assay Buffer (1x):

Number of Strips	Biotin-Conjugate (mL)	Streptavidin-HRP (mL)	Assay Buffer (1x) (mL)
1 - 6	0.03	0.06	2.91
1 - 12	0.06	0.12	5.82

Human IL-13 standard

Reconstitute lyophilized human IL-13 standard with distilled water. (Reconstitution volume is stated on the label of the standard vial.)

Test protocol summary

1. Determine the number of microwell strips required.
2. Wash microwell strips twice with Wash Buffer.
3. Standard dilution on the microwell plate: Add 100 μ L Assay Buffer (1x), in duplicate, to all standard wells. Pipette 100 μ L prepared standard into the first wells and create standard dilutions by transferring 100 μ L from well to well. Discard 100 μ L from the last wells.
Alternatively external standard dilution in tubes (see "External standard dilution" on page 3): Pipette 100 μ L of these standard dilutions in the microwell strips.
4. Add 100 μ L Assay Buffer (1x), in duplicate, to the blank wells.
5. Add 50 μ L Assay Buffer (1x) to sample wells.
6. Add 50 μ L sample in duplicate, to designated sample wells.
7. Prepare Conjugate Mixture.
8. Add 50 μ L Conjugate Mixture to all wells.
9. Cover microwell strips and incubate 2 hours at room temperature (18° to 25°C).
10. Empty and wash microwell strips 3 times with Wash Buffer.
11. Add 100 μ L of TMB Substrate Solution to all wells.
12. Incubate the microwell strips for about 10 minutes at room temperature (18° to 25°C).
13. Add 100 μ L Stop Solution to all wells.
14. Blank microwell reader and measure color intensity at 450 nm.

Note: If instructions in this protocol have been followed, samples have been diluted 1:2 (50 μ L sample + 50 μ L Assay Buffer (1x)) and the concentration read from the standard curve must be multiplied by the dilution factor (x 2).

Customer and technical support

Visit <https://www.novusbio.com/support> for service and support information.

Limited product warranty

Novus Biologicals and/or its affiliate(s) warrant their products as set forth in Novus Biologicals' Terms and Conditions.

If you have any questions, please contact Novus Biologicals at <https://www.novusbio.com/support>.