

Product Datasheet

CXCR6 Antibody - BSA Free NLS1102

Unit Size: 0.05 ml

Keep as concentrated solution. Aliquot and store at -20C or below. Avoid multiple freeze-thaw cycles.

www.novusbio.com



technical@novusbio.com

Publications: 2

Protocols, Publications, Related Products, Reviews, Research Tools and Images at:
www.novusbio.com/NLS1102

Updated 10/23/2024 v.20.1

Earn rewards for product
reviews and publications.

Submit a publication at www.novusbio.com/publications

Submit a review at www.novusbio.com/reviews/destination/NLS1102



NLS1102

CXCR6 Antibody - BSA Free

Product Information

| | |
|----------------------|---|
| Unit Size | 0.05 ml |
| Concentration | 1.0 mg/ml |
| Storage | Keep as concentrated solution. Aliquot and store at -20C or below. Avoid multiple freeze-thaw cycles. |
| Clonality | Polyclonal |
| Preservative | 0.1% Sodium Azide |
| Isotype | IgG |
| Purity | Immunogen affinity purified |
| Buffer | PBS |

Product Description

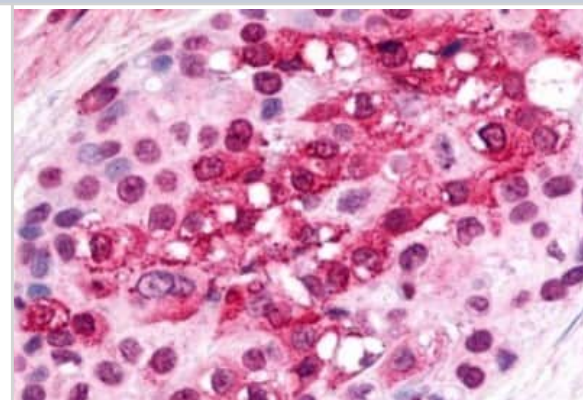
| | |
|--------------------------------|--|
| Description | Product can be stored undiluted at 4C for up to 1 month. |
| Host | Rabbit |
| Gene ID | 10663 |
| Gene Symbol | CXCR6 |
| Species | Human, Mouse, Monkey |
| Reactivity Notes | Mouse reactivity reported in scientific literature (PMID: 23653207). Predicted cross-reactivity based on sequence identity: Gorilla (100%), Marmoset (100%), Canine (88%), Bovine (88%), Equine (88%), Porcine (88%), Bat (81%). |
| Specificity/Sensitivity | Human CXCR6. BLAST analysis of the peptide immunogen showed no homology with other human proteins. |
| Immunogen | Synthetic 16 amino acid peptide from 2nd cytoplasmic domain of human CXCR6. |

Product Application Details

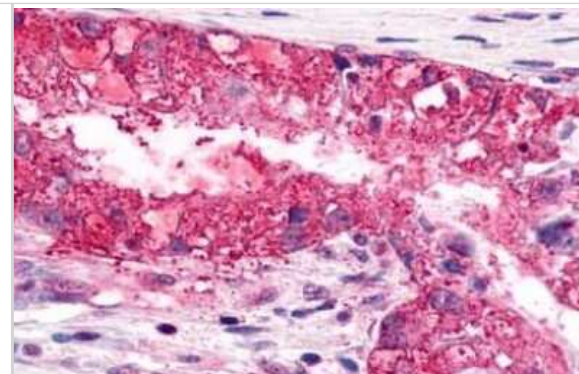
| | |
|------------------------------|---|
| Applications | Flow Cytometry, Immunocytochemistry/ Immunofluorescence, Immunohistochemistry, Immunohistochemistry-Paraffin |
| Recommended Dilutions | Flow Cytometry, Immunohistochemistry, Immunocytochemistry/ Immunofluorescence, Immunohistochemistry-Paraffin 5 - 10 ug/ml |
| Application Notes | Use in ICC/IF reported in scientific literature (PMID: 23653207). Use in FLOW reported in scientific literature (PMID: 24302539). |

Images

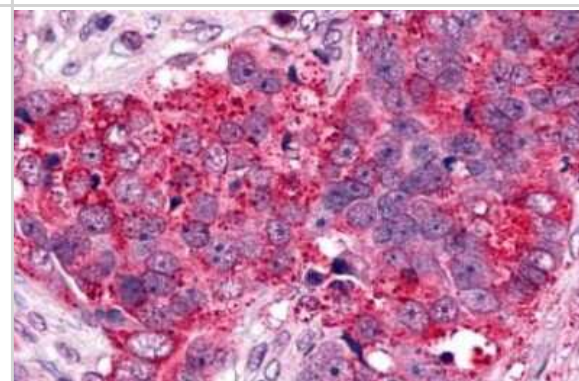
Immunohistochemistry-Paraffin: CXCR6 Antibody [NLS1102] - Anti-CXCR6 antibody IHC of human Breast, Carcinoma.
Immunohistochemistry of formalin-fixed, paraffin-embedded tissue after heat-induced antigen retrieval.



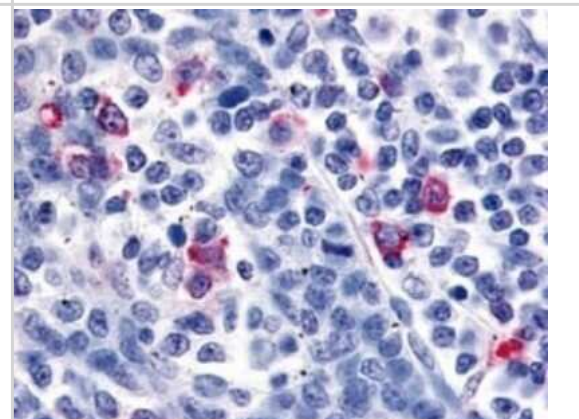
Immunohistochemistry-Paraffin: CXCR6 Antibody [NLS1102] - Analysis of anti-CXCR6 antibody with human lung, adenocarcinoma.



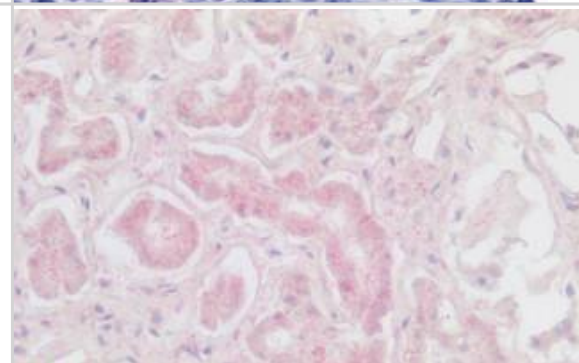
Immunohistochemistry-Paraffin: CXCR6 Antibody [NLS1102] - Analysis of anti-CXCR6 antibody with human ovary, carcinoma.



Immunohistochemistry-Paraffin: CXCR6 Antibody [NLS1102] - Analysis of anti-CXCR6 antibody with tonsil, interfollicular zone at 6.8 ug/ ml.



Immunohistochemistry-Paraffin: CXCR6 Antibody - BSA Free [NLS1102] - Immunohistochemistry of formalin-fixed, paraffin-embedded Human Kidney tissue



Publications

Behnan J, Isakson P, Joel M et al. Recruited brain tumor-derived mesenchymal stem cells contribute to brain tumor progression. Stem Cells. 2013-12-03 [PMID: 24302539] (FLOW, Human)

Jung Y, Kim JK, Shiozawa Y et al. Recruitment of mesenchymal stem cells into prostate tumours promotes metastasis. Nat Commun 2013-01-01 [PMID: 23653207] (ICC/IF, Mouse, Human)



Novus Biologicals USA

10730 E. Briarwood Avenue
Centennial, CO 80112
USA

Phone: 303.730.1950

Toll Free: 1.888.506.6887

Fax: 303.730.1966

nb-customerservice@bio-techne.com

Bio-Techne Canada

21 Canmotor Ave
Toronto, ON M8Z 4E6
Canada

Phone: 905.827.6400

Toll Free: 855.668.8722

Fax: 905.827.6402

canada.inquires@bio-techne.com

Bio-Techne Ltd

19 Barton Lane
Abingdon Science Park
Abingdon, OX14 3NB, United Kingdom

Phone: (44) (0) 1235 529449

Free Phone: 0800 37 34 15

Fax: (44) (0) 1235 533420

info.EMEA@bio-techne.com

General Contact Information

www.novusbio.com

Technical Support: nb-technical@bio-techne.com

Orders: nb-customerservice@bio-techne.com

General: novus@novusbio.com

Products Related to NLS1102

| | |
|---------------|---|
| HAF008 | Goat anti-Rabbit IgG Secondary Antibody [HRP] |
| NB7160 | Goat anti-Rabbit IgG (H+L) Secondary Antibody [HRP] |
| NBP2-24891 | Rabbit IgG Isotype Control |
| NBP1-76871PEP | CXCR6 Antibody Blocking Peptide |

Limitations

This product is for research use only and is not approved for use in humans or in clinical diagnosis. Primary Antibodies are guaranteed for 1 year from date of receipt.

For more information on our 100% guarantee, please visit www.novusbio.com/guarantee

Earn gift cards/discounts by submitting a review: www.novusbio.com/reviews/submit/NLS1102

Earn gift cards/discounts by submitting a publication using this product:
www.novusbio.com/publications

