

Product Datasheet

SNX25 Antibody NBP3-48525

Unit Size: 100 ul

Store at 4C short term. Aliquot and store at -20C long term. Avoid freeze-thaw cycles.

www.novusbio.com



technical@novusbio.com

Protocols, Publications, Related Products, Reviews, Research Tools and Images at:
www.novusbio.com/NBP3-48525

Updated 9/25/2025 v.20.1

Earn rewards for product
reviews and publications.

Submit a publication at www.novusbio.com/publications

Submit a review at www.novusbio.com/reviews/destination/NBP3-48525



NBP3-48525

SNX25 Antibody

Product Information	
Unit Size	100 ul
Concentration	Concentrations vary lot to lot. See vial label for concentration. If unlisted please contact technical services.
Storage	Store at 4C short term. Aliquot and store at -20C long term. Avoid freeze-thaw cycles.
Clonality	Polyclonal
Preservative	0.01% Thimerosal
Isotype	IgG
Purity	Antigen Affinity-purified
Buffer	0.1M Tris, 0.1M Glycine, 20% Glycerol

Product Description	
Description	Novus Biologicals Rabbit SNX25 Antibody (NBP3-48525) is a polyclonal antibody validated for use in IHC and WB. All Novus Biologicals antibodies are covered by our 100% guarantee.
Host	Rabbit
Gene ID	83891
Gene Symbol	SNX25
Species	Human, Mouse
Immunogen	Recombinant protein encompassing a sequence within the N-terminus region of human SNX25. The exact sequence is proprietary.

Product Application Details	
Applications	Western Blot, Immunohistochemistry-Paraffin, Immunohistochemistry
Recommended Dilutions	Western Blot 1:500-1:3000, Immunohistochemistry, Immunohistochemistry-Paraffin 1:100-1:1000



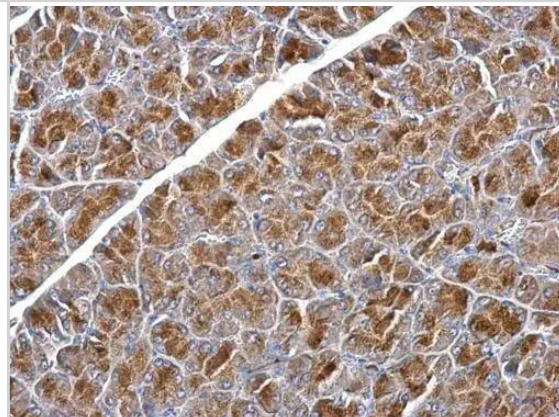
Images

SNX25 antibody [N2C1], Internal detects SNX25 protein at cytosol on mouse pancreas by immunohistochemical analysis.

Sample: Paraffin-embedded mouse pancreas.

SNX25 antibody [N2C1], Internal (NBP3-48525) dilution: 1:500.

Antigen Retrieval: (EDTA based, pH 8.0) buffer, 15min



SNX25 antibody detects SNX25 protein by Western blot analysis.

A. 30 ug 293T whole cell lysate/extract

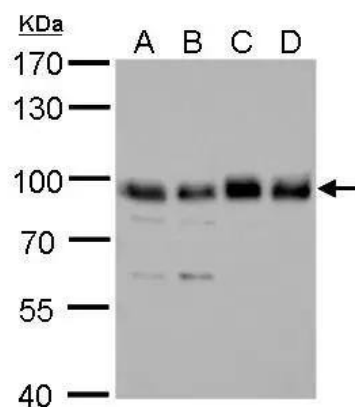
B. 30 ug A431 whole cell lysate/extract

C. 30 ug HeLa whole cell lysate/extract

D. 30 ug HepG2 whole cell lysate/extract

7.5 % SDS-PAGE

SNX25 antibody (NBP3-48525) dilution: 1:1000

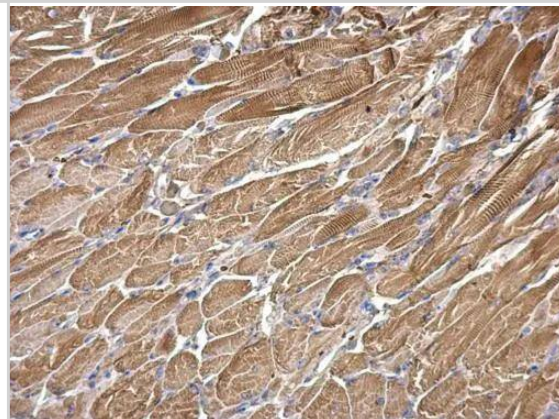


SNX25 antibody [N2C1], Internal detects SNX25 protein at cytosol on mouse muscle by immunohistochemical analysis.

Sample: Paraffin-embedded mouse muscle.

SNX25 antibody [N2C1], Internal (NBP3-48525) dilution: 1:500.

Antigen Retrieval: (EDTA based, pH 8.0) buffer, 15min





Novus Biologicals USA

10730 E. Briarwood Avenue
Centennial, CO 80112
USA
Phone: 303.730.1950
Toll Free: 1.888.506.6887
Fax: 303.730.1966
nb-customerservice@bio-techne.com

Bio-Techne Canada

21 Canmotor Ave
Toronto, ON M8Z 4E6
Canada
Phone: 905.827.6400
Toll Free: 855.668.8722
Fax: 905.827.6402
canada.inquires@bio-techne.com

Bio-Techne Ltd

19 Barton Lane
Abingdon Science Park
Abingdon, OX14 3NB, United Kingdom
Phone: (44) (0) 1235 529449
Free Phone: 0800 37 34 15
Fax: (44) (0) 1235 533420
info.EMEA@bio-techne.com

General Contact Information

www.novusbio.com
Technical Support: nb-technical@bio-techne.com
Orders: nb-customerservice@bio-techne.com
General: novus@novusbio.com

Products Related to NBP3-48525

NBP2-33376H	Blue Marker Antibody (6F4-F6) [HRP]
HAF008	Goat anti-Rabbit IgG Secondary Antibody [HRP]
NB7160	Goat anti-Rabbit IgG (H+L) Secondary Antibody [HRP]
NBP2-24891	Rabbit IgG Isotype Control

Limitations

This product is for research use only and is not approved for use in humans or in clinical diagnosis. Primary Antibodies are guaranteed for 1 year from date of receipt.

For more information on our 100% guarantee, please visit www.novusbio.com/guarantee

Earn gift cards/discounts by submitting a review: www.novusbio.com/reviews/submit/NBP3-48525

Earn gift cards/discounts by submitting a publication using this product:
www.novusbio.com/publications

