

Product Datasheet

Human Semaglutide Antibody ELISA Kit (Colorimetric) NBP3-45153

Unit Size: 1 Kit

Storage of components varies. See protocol for specific instructions.

www.novusbio.com



technical@novusbio.com

Protocols, Publications, Related Products, Reviews, Research Tools and Images at:
www.novusbio.com/NBP3-45153

Updated 4/13/2025 v.20.1

Earn rewards for product
reviews and publications.

Submit a publication at www.novusbio.com/publications

Submit a review at www.novusbio.com/reviews/destination/NBP3-45153

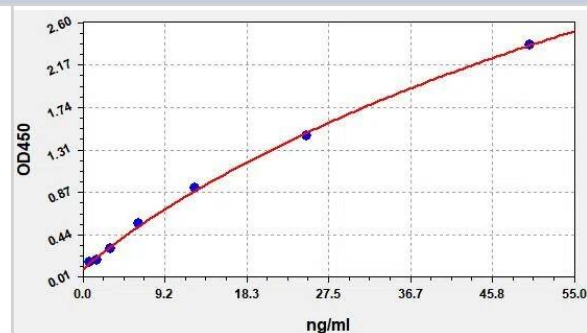


NBP3-45153**Human Semaglutide Antibody ELISA Kit (Colorimetric)**

Product Information	
Unit Size	1 Kit
Concentration	Concentration is not relevant for this product. Please see the protocols for proper use of this product.
Storage	Storage of components varies. See protocol for specific instructions.
Product Description	
Description	Assay Length: 3 hours
Species	Human
Specificity/Sensitivity	Specifically binds with Anti-Semaglutide, no obvious cross reaction with other analogues.
Kit Components	ELISA Microplate (Dismountable), Lyophilized Standard, Biotin-labeled Antibody (Concentrated 100x), HRP-Streptavidin Conjugate (SABC 100x), TMB Substrate, Sample Dilution Buffer, Antibody Dilution Buffer, SABC Dilution Buffer, Stop Solution, Wash Buffer (25x), Plate Sealer, Product Description
Standard Curve Range	0.781 - 50 ng/mL (example only; lot dependent)
Sensitivity	0.469 ng/mL (example only; lot dependent)
Inter Assay	%CV < 5.53 (example only; lot dependent)
Intra Assay	%CV < 5.9 (example only; lot dependent)
Assay Type	Indirect ELISA
Spiking Recovery	85 - 103% (example only; lot dependent)
Suitable Sample Type	Serum, plasma, cell culture supernatant, cell or tissue lysate
Sample Volume	3 - 100 μ L
Product Application Details	
Applications	ELISA
Recommended Dilutions	ELISA

Images

ELISA: Human Semaglutide Antibody ELISA Kit (Colorimetric) [NBP3-45153] - Standard Curve Reference





Novus Biologicals USA

10730 E. Briarwood Avenue
Centennial, CO 80112
USA
Phone: 303.730.1950
Toll Free: 1.888.506.6887
Fax: 303.730.1966
nb-customerservice@bio-techne.com

Bio-Techne Canada

21 Canmotor Ave
Toronto, ON M8Z 4E6
Canada
Phone: 905.827.6400
Toll Free: 855.668.8722
Fax: 905.827.6402
canada.inquires@bio-techne.com

Bio-Techne Ltd

19 Barton Lane
Abingdon Science Park
Abingdon, OX14 3NB, United Kingdom
Phone: (44) (0) 1235 529449
Free Phone: 0800 37 34 15
Fax: (44) (0) 1235 533420
info.EMEA@bio-techne.com

General Contact Information

www.novusbio.com
Technical Support: nb-technical@bio-techne.com
Orders: nb-customerservice@bio-techne.com
General: novus@novusbio.com

Limitations

This product is for research use only and is not approved for use in humans or in clinical diagnosis. ELISA Kits are guaranteed for 6 months from date of receipt.

For more information on our 100% guarantee, please visit www.novusbio.com/guarantee

Earn gift cards/discounts by submitting a review: www.novusbio.com/reviews/submit/NBP3-45153

Earn gift cards/discounts by submitting a publication using this product:
www.novusbio.com/publications

