

Product Datasheet

Integrin beta 1/CD29 Antibody (CL15606) [Unconjugated] NBP3-43675-100ul

Unit Size: 100 ul

Store at 4C short term. Aliquot and store at -20C long term. Avoid freeze-thaw cycles.

www.novusbio.com



technical@novusbio.com

Protocols, Publications, Related Products, Reviews, Research Tools and Images at:
www.novusbio.com/NBP3-43675

Updated 2/27/2025 v.20.1

Earn rewards for product
reviews and publications.

Submit a publication at www.novusbio.com/publications

Submit a review at www.novusbio.com/reviews/destination/NBP3-43675



NBP3-43675-100ul

Integrin beta 1/CD29 Antibody (CL15606) [Unconjugated]

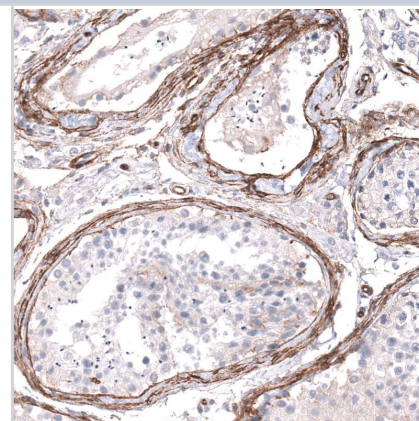
Product Information	
Unit Size	100 ul
Concentration	1 mg/ml
Storage	Store at 4C short term. Aliquot and store at -20C long term. Avoid freeze-thaw cycles.
Clonality	Monoclonal
Clone	CL15606
Preservative	0.02% Sodium Azide
Isotype	IgG1
Conjugate	Unconjugated
Purity	Protein A purified
Buffer	PBS, pH 7.2, 40% glycerol

Product Description	
Host	Mouse
Gene ID	3688
Gene Symbol	ITGB1
Species	Human
Immunogen	This antibody was generated using a recombinant protein sequence of P05556, with the exact immunogen sequence remaining proprietary.

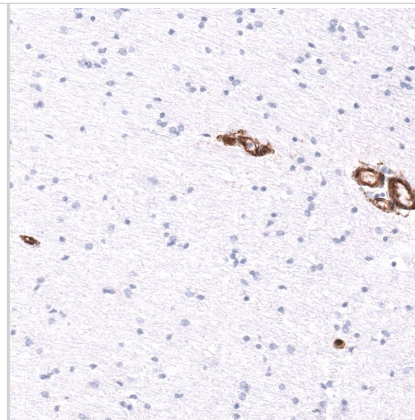
Product Application Details	
Applications	Western Blot, Immunohistochemistry, Immunohistochemistry-Paraffin
Recommended Dilutions	Western Blot 1 ug/ml, Immunohistochemistry 1:2500-1:5000, Immunohistochemistry-Paraffin 1:2500-1:5000
Application Notes	For IHC-Paraffin, HIER pH 6 retrieval is recommended.

Images

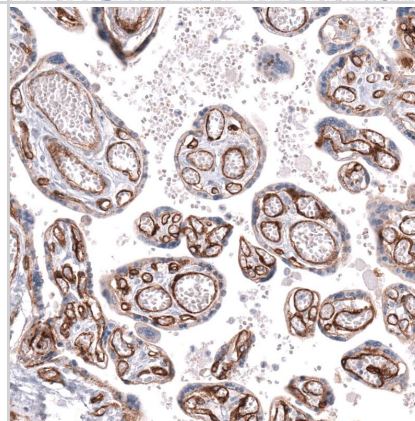
Staining of human testis shows strong membranous positivity in peritubular myoid cells.



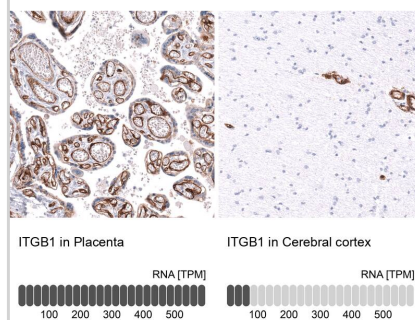
Staining of human cerebral cortex shows strong membranous positivity in endothelial cells.



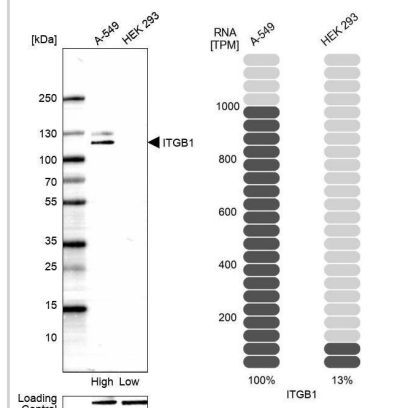
Staining of human placenta shows strong membranous positivity in endothelial cells.



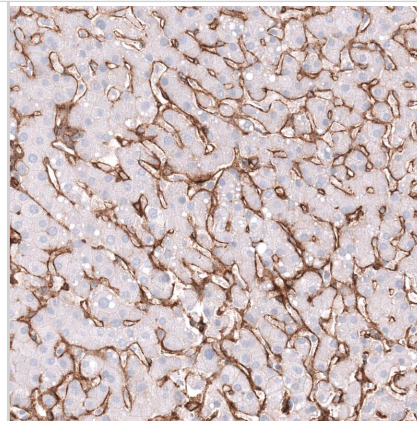
Analysis in human placenta and cerebral cortex tissues using NBP3-43675 antibody. Corresponding ITGB1 RNA-seq data are presented for the same tissues.



Analysis in human cell lines A-549 and HEK293 using Integrin beta 1/CD29 antibody. Corresponding ITGB1 RNA-seq data are presented for the same cell lines. Loading control: Anti-PARP1.



Staining of human liver shows strong positivity in sinusoids.





Novus Biologicals USA

10730 E. Briarwood Avenue
Centennial, CO 80112
USA
Phone: 303.730.1950
Toll Free: 1.888.506.6887
Fax: 303.730.1966
nb-customerservice@bio-techne.com

Bio-Techne Canada

21 Canmotor Ave
Toronto, ON M8Z 4E6
Canada
Phone: 905.827.6400
Toll Free: 855.668.8722
Fax: 905.827.6402
canada.inquires@bio-techne.com

Bio-Techne Ltd

19 Barton Lane
Abingdon Science Park
Abingdon, OX14 3NB, United Kingdom
Phone: (44) (0) 1235 529449
Free Phone: 0800 37 34 15
Fax: (44) (0) 1235 533420
info.EMEA@bio-techne.com

General Contact Information

www.novusbio.com
Technical Support: nb-technical@bio-techne.com
Orders: nb-customerservice@bio-techne.com
General: novus@novusbio.com

Products Related to NBP3-43675-100ul

NBP2-59570-50ug	Recombinant Human Integrin beta 1/CD29 His Protein
210-TA-005	TNF-alpha [Unconjugated]
NBL1-12069	Integrin beta 1/CD29 Overexpression Lysate
202-IL-010	IL-2 [Unconjugated]

Limitations

This product is for research use only and is not approved for use in humans or in clinical diagnosis. Primary Antibodies are guaranteed for 1 year from date of receipt.

For more information on our 100% guarantee, please visit www.novusbio.com/guarantee

Earn gift cards/discounts by submitting a review: www.novusbio.com/reviews/submit/NBP3-43675

Earn gift cards/discounts by submitting a publication using this product:
www.novusbio.com/publications

