

Product Datasheet

CLEC10A/CD301 Antibody (CL15523) [Unconjugated] NBP3-43673-100ul

Unit Size: 100 ul

Store at 4C short term. Aliquot and store at -20C long term. Avoid freeze-thaw cycles.

www.novusbio.com



technical@novusbio.com

Protocols, Publications, Related Products, Reviews, Research Tools and Images at:
www.novusbio.com/NBP3-43673

Updated 2/27/2025 v.20.1

**Earn rewards for product
reviews and publications.**

Submit a publication at www.novusbio.com/publications

Submit a review at www.novusbio.com/reviews/destination/NBP3-43673



NBP3-43673-100ul

CLEC10A/CD301 Antibody (CL15523) [Unconjugated]

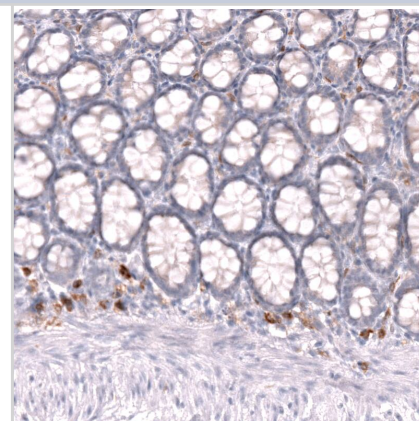
Product Information	
Unit Size	100 ul
Concentration	1 mg/ml
Storage	Store at 4C short term. Aliquot and store at -20C long term. Avoid freeze-thaw cycles.
Clonality	Monoclonal
Clone	CL15523
Preservative	0.02% Sodium Azide
Isotype	IgG2a
Conjugate	Unconjugated
Purity	Protein A purified
Buffer	PBS, pH 7.2, 40% glycerol

Product Description	
Host	Mouse
Gene ID	10462
Gene Symbol	CLEC10A
Species	Human
Immunogen	This antibody was generated using a synthetic peptide of Q8IUN9, with the exact immunogen sequence remaining proprietary.

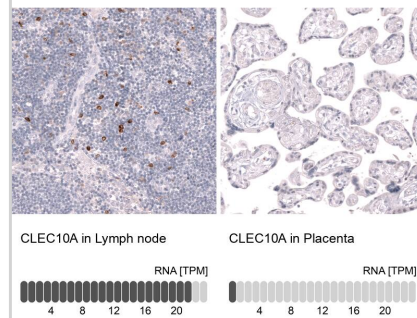
Product Application Details	
Applications	Western Blot, Immunohistochemistry, Immunohistochemistry-Paraffin
Recommended Dilutions	Western Blot 1 ug/ml, Immunohistochemistry 1:200 - 1:500, Immunohistochemistry-Paraffin 1:200 - 1:500
Application Notes	For IHC-Paraffin, HIER pH 6 retrieval is recommended.

Images

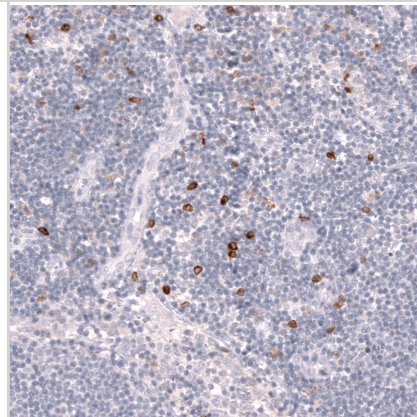
Staining of human colon shows strong membranous positivity in lymphoid cells.



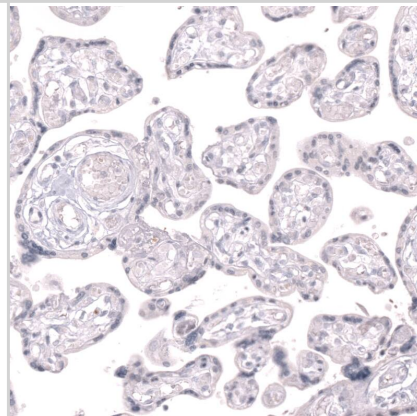
Analysis in human lymph node and placenta tissues using NBP3-43673 antibody. Corresponding CLEC10A RNA-seq data are presented for the same tissues.



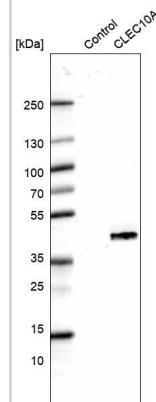
Staining of human lymph node shows strong membranous positivity in non-germinal center cells.



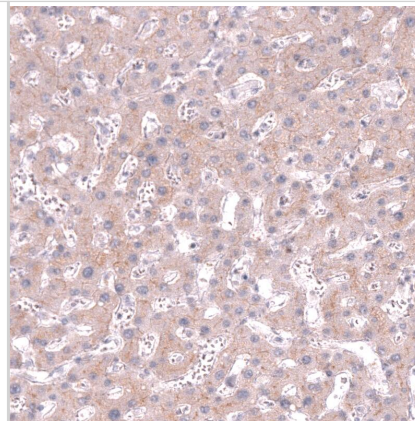
Staining of human placenta shows no positivity in trophoblastic cells as expected.



Analysis in control (vector only transfected HEK293T lysate) and CLEC10A over-expression lysate (Co-expressed with a C-terminal myc-DDK tag (3.1 kDa) in mammalian HEK293T cells).



Staining of human liver shows moderate cytoplasmic and membranous positivity in hepatocytes.





Novus Biologicals USA

10730 E. Briarwood Avenue
Centennial, CO 80112
USA
Phone: 303.730.1950
Toll Free: 1.888.506.6887
Fax: 303.730.1966
nb-customerservice@bio-techne.com

Bio-Techne Canada

21 Canmotor Ave
Toronto, ON M8Z 4E6
Canada
Phone: 905.827.6400
Toll Free: 855.668.8722
Fax: 905.827.6402
canada.inquires@bio-techne.com

Bio-Techne Ltd

19 Barton Lane
Abingdon Science Park
Abingdon, OX14 3NB, United Kingdom
Phone: (44) (0) 1235 529449
Free Phone: 0800 37 34 15
Fax: (44) (0) 1235 533420
info.EMEA@bio-techne.com

General Contact Information

www.novusbio.com
Technical Support: nb-technical@bio-techne.com
Orders: nb-customerservice@bio-techne.com
General: novus@novusbio.com

Products Related to NBP3-43673-100ul

MAB003	Mouse IgG2a Isotype Control (20102) [Unconjugated]
NBP1-84591PEP	CLEC10A/CD301 Recombinant Protein Antigen
H00008294-P01-10ug	Recombinant Human HIST1H4I GST (N-Term) Protein
4888-CL-050	CLEC10A/CD301

Limitations

This product is for research use only and is not approved for use in humans or in clinical diagnosis. Primary Antibodies are guaranteed for 1 year from date of receipt.

For more information on our 100% guarantee, please visit www.novusbio.com/guarantee

Earn gift cards/discounts by submitting a review: www.novusbio.com/reviews/submit/NBP3-43673

Earn gift cards/discounts by submitting a publication using this product:
www.novusbio.com/publications

