

# Product Datasheet

## Somatostatin Antibody (CL15075) [Unconjugated] NBP3-43652-100ul

Unit Size: 100 ul

Store at 4C short term. Aliquot and store at -20C long term. Avoid freeze-thaw cycles.

[www.novusbio.com](http://www.novusbio.com)



[technical@novusbio.com](mailto:technical@novusbio.com)

Protocols, Publications, Related Products, Reviews, Research Tools and Images at:  
[www.novusbio.com/NBP3-43652](http://www.novusbio.com/NBP3-43652)

Updated 2/27/2025 v.20.1

Earn rewards for product  
reviews and publications.

Submit a publication at [www.novusbio.com/publications](http://www.novusbio.com/publications)

Submit a review at [www.novusbio.com/reviews/destination/NBP3-43652](http://www.novusbio.com/reviews/destination/NBP3-43652)



**NBP3-43652-100ul**

Somatostatin Antibody (CL15075) [Unconjugated]

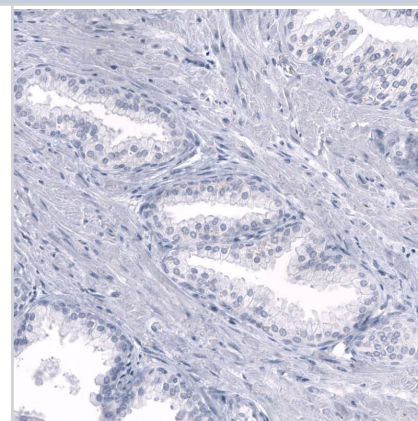
Product Information	
Unit Size	100 ul
Concentration	1 mg/ml
Storage	Store at 4C short term. Aliquot and store at -20C long term. Avoid freeze-thaw cycles.
Clonality	Monoclonal
Clone	CL15075
Preservative	0.02% Sodium Azide
Isotype	IgG1
Conjugate	Unconjugated
Purity	Protein A purified
Buffer	PBS, pH 7.2, 40% glycerol

Product Description	
Host	Mouse
Gene ID	6750
Gene Symbol	SST
Species	Human
Immunogen	This antibody was generated using a recombinant protein sequence of P61278, with the exact immunogen sequence remaining proprietary.

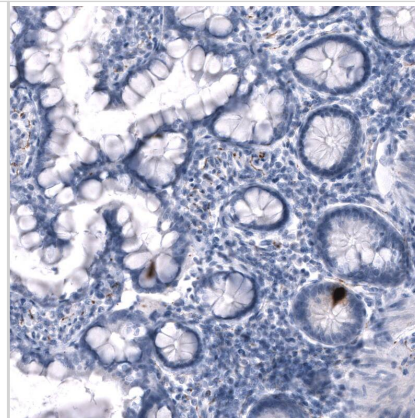
Product Application Details	
Applications	Immunohistochemistry, Immunohistochemistry-Paraffin
Recommended Dilutions	Immunohistochemistry 1:500-1:1000, Immunohistochemistry-Paraffin 1:500-1:1000
Application Notes	For IHC-Paraffin, HIER pH 6 retrieval is recommended.

**Images**

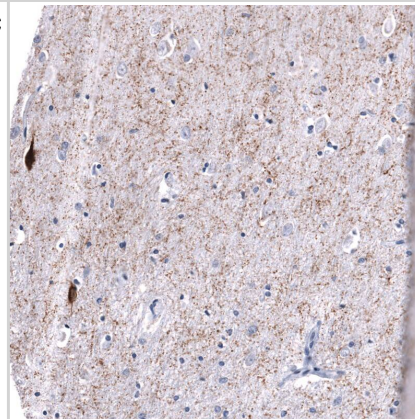
Staining of human prostate shows no positivity in glandular cells as expected.



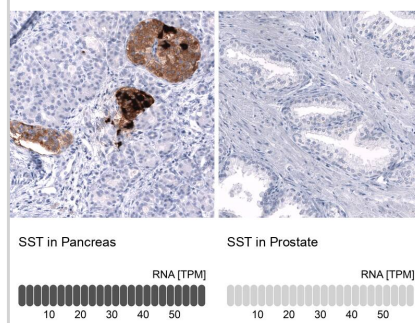
Staining of human small intestine shows strong cytoplasmic positivity in enteroendocrine cells.



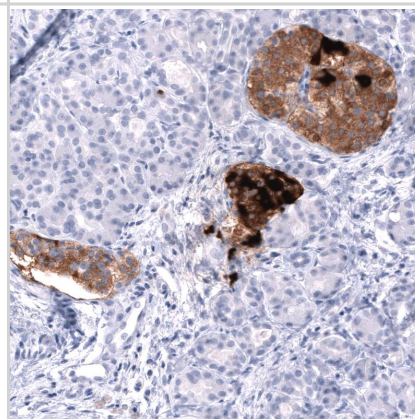
Staining of human cerebral cortex shows moderate to strong cytoplasmic positivity in a subset of neurons and in neuronal processes.



Analysis in human pancreas and prostate tissues using NBP3-43652 antibody. Corresponding SST RNA-seq data are presented for the same tissues.



Staining of human pancreas shows strong cytoplasmic positivity in endocrine glandular cells in islets of Langerhans.





### **Novus Biologicals USA**

10730 E. Briarwood Avenue  
Centennial, CO 80112  
USA  
Phone: 303.730.1950  
Toll Free: 1.888.506.6887  
Fax: 303.730.1966  
nb-customerservice@bio-techne.com

### **Bio-Techne Canada**

21 Canmotor Ave  
Toronto, ON M8Z 4E6  
Canada  
Phone: 905.827.6400  
Toll Free: 855.668.8722  
Fax: 905.827.6402  
canada.inquires@bio-techne.com

### **Bio-Techne Ltd**

19 Barton Lane  
Abingdon Science Park  
Abingdon, OX14 3NB, United Kingdom  
Phone: (44) (0) 1235 529449  
Free Phone: 0800 37 34 15  
Fax: (44) (0) 1235 533420  
info.EMEA@bio-techne.com

### **General Contact Information**

www.novusbio.com  
Technical Support: nb-technical@bio-techne.com  
Orders: nb-customerservice@bio-techne.com  
General: novus@novusbio.com

### **Products Related to NBP3-43652-100ul**

---

H00006750-Q01-10ug	Recombinant Human Somatostatin GST (N-Term) Protein
291-G1-200	IGF-I/IGF-1 [Unconjugated]
NBP2-80269	Human Somatostatin ELISA Kit (Colorimetric)
NB100-1793	Pancreatic Polypeptide/PP Antibody

---

### **Limitations**

This product is for research use only and is not approved for use in humans or in clinical diagnosis. Primary Antibodies are guaranteed for 1 year from date of receipt.

For more information on our 100% guarantee, please visit [www.novusbio.com/guarantee](http://www.novusbio.com/guarantee)

Earn gift cards/discounts by submitting a review: [www.novusbio.com/reviews/submit/NBP3-43652](http://www.novusbio.com/reviews/submit/NBP3-43652)

Earn gift cards/discounts by submitting a publication using this product:  
[www.novusbio.com/publications](http://www.novusbio.com/publications)

