

# Product Datasheet

## Human Thioredoxin-1 ELISA Kit (Colorimetric) NBP3-40220

Unit Size: 1 Kit

Storage of components varies. See protocol for specific instructions.

[www.novusbio.com](http://www.novusbio.com)



[technical@novusbio.com](mailto:technical@novusbio.com)

Protocols, Publications, Related Products, Reviews, Research Tools and Images at:  
[www.novusbio.com/NBP3-40220](http://www.novusbio.com/NBP3-40220)

Updated 10/16/2024 v.20.1

Earn rewards for product  
reviews and publications.

Submit a publication at [www.novusbio.com/publications](http://www.novusbio.com/publications)

Submit a review at [www.novusbio.com/reviews/destination/NBP3-40220](http://www.novusbio.com/reviews/destination/NBP3-40220)



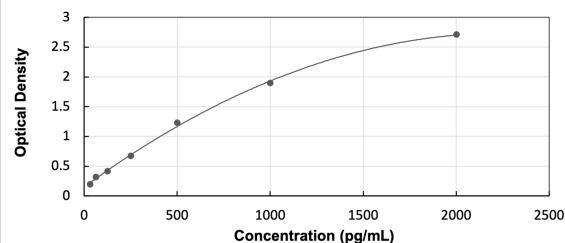
**NBP3-40220**

## Human Thioredoxin-1 ELISA Kit (Colorimetric)

| Product Information  |   |
|----------------------|---|
| Unit Size            | 1 Kit   |
| Concentration        | Concentration is not relevant for this product. Please see the protocols for proper use of this product.  |
| Storage              | Storage of components varies. See protocol for specific instructions.   |
| Product Description  |   |
| Description          | Assay Length: 4.5 hours   |
| Gene ID              | 7295  |
| Gene Symbol          | TXN   |
| Species              | Human   |
| Kit Components       | Pre-coated 96T strip plate, Plate sealer for 96 wells, Standard, Diluent Buffer, Detection Reagent A, Detection Reagent B, TMB Substrate, Stop Solution, Wash Buffer (30 x concentrate), Instruction manual |
| Standard Curve Range | 31.25 - 2000 pg/mL (example only; lot dependent)  |
| Sensitivity          | 14.2 pg/mL (example only; lot dependent)  |
| Inter Assay          | %CV < 12 (example only; lot dependent)  |
| Intra Assay          | %CV < 10 (example only; lot dependent)  |
| Assay Type           | Sandwich ELISA  |
| Suitable Sample Type | Serum, plasma and other biological fluids   |
| Sample Volume        | 100 uL  |

**Images**

ELISA: Human Thioredoxin-1 ELISA Kit (Colorimetric) [NBP3-40220] - Standard Curve Reference





### **Novus Biologicals USA**

10730 E. Briarwood Avenue  
Centennial, CO 80112  
USA  
Phone: 303.730.1950  
Toll Free: 1.888.506.6887  
Fax: 303.730.1966  
nb-customerservice@bio-techne.com

### **Bio-Techne Canada**

21 Canmotor Ave  
Toronto, ON M8Z 4E6  
Canada  
Phone: 905.827.6400  
Toll Free: 855.668.8722  
Fax: 905.827.6402  
canada.inquires@bio-techne.com

### **Bio-Techne Ltd**

19 Barton Lane  
Abingdon Science Park  
Abingdon, OX14 3NB, United Kingdom  
Phone: (44) (0) 1235 529449  
Free Phone: 0800 37 34 15  
Fax: (44) (0) 1235 533420  
info.EMEA@bio-techne.com

### **General Contact Information**

www.novusbio.com  
Technical Support: nb-technical@bio-techne.com  
Orders: nb-customerservice@bio-techne.com  
General: novus@novusbio.com

### **Products Related to NBP3-40220**

---

|            |   |
|------------|---|
| NBP1-44476 | Recombinant E. coli Thioredoxin-1 His Protein |
| 210-TA-005 | TNF-alpha [Unconjugated]                      |
| NBP2-52983 | Thioredoxin-1 Antibody - BSA Free             |
| 202-IL-010 | IL-2 [Unconjugated]                           |

---

### **Limitations**

This product is for research use only and is not approved for use in humans or in clinical diagnosis. ELISA Kits are guaranteed for 6 months from date of receipt.

For more information on our 100% guarantee, please visit [www.novusbio.com/guarantee](http://www.novusbio.com/guarantee)

Earn gift cards/discounts by submitting a review: [www.novusbio.com/reviews/submit/NBP3-40220](http://www.novusbio.com/reviews/submit/NBP3-40220)

Earn gift cards/discounts by submitting a publication using this product:  
[www.novusbio.com/publications](http://www.novusbio.com/publications)

