

# Product Datasheet

## Human WWP2 ELISA Kit (Colorimetric) NBP3-38910

Unit Size: 1 Kit

Storage of components varies. See protocol for specific instructions.

[www.novusbio.com](http://www.novusbio.com)



[technical@novusbio.com](mailto:technical@novusbio.com)

Protocols, Publications, Related Products, Reviews, Research Tools and Images at:  
[www.novusbio.com/NBP3-38910](http://www.novusbio.com/NBP3-38910)

Updated 10/16/2024 v.20.1

Earn rewards for product  
reviews and publications.

Submit a publication at [www.novusbio.com/publications](http://www.novusbio.com/publications)

Submit a review at [www.novusbio.com/reviews/destination/NBP3-38910](http://www.novusbio.com/reviews/destination/NBP3-38910)



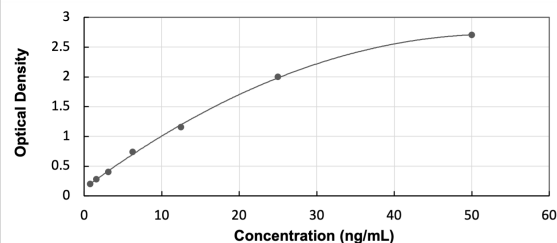
**NBP3-38910**

## Human WWP2 ELISA Kit (Colorimetric)

| Product Information         |                                                                                                                                                                                                             |
|-----------------------------|-------------------------------------------------------------------------------------------------------------------------------------------------------------------------------------------------------------|
| <b>Unit Size</b>            | 1 Kit                                                                                                                                                                                                       |
| <b>Concentration</b>        | Concentration is not relevant for this product. Please see the protocols for proper use of this product.                                                                                                    |
| <b>Storage</b>              | Storage of components varies. See protocol for specific instructions.                                                                                                                                       |
| Product Description         |                                                                                                                                                                                                             |
| <b>Description</b>          | Assay Length: 4.5 hours                                                                                                                                                                                     |
| <b>Gene ID</b>              | 11060                                                                                                                                                                                                       |
| <b>Gene Symbol</b>          | WWP2                                                                                                                                                                                                        |
| <b>Species</b>              | Human                                                                                                                                                                                                       |
| <b>Kit Components</b>       | Pre-coated 96T strip plate, Plate sealer for 96 wells, Standard, Diluent Buffer, Detection Reagent A, Detection Reagent B, TMB Substrate, Stop Solution, Wash Buffer (30 x concentrate), Instruction manual |
| <b>Standard Curve Range</b> | 0.781 - 50 ng/mL (example only; lot dependent)                                                                                                                                                              |
| <b>Sensitivity</b>          | 0.27 ng/mL (example only; lot dependent)                                                                                                                                                                    |
| <b>Inter Assay</b>          | %CV < 12 (example only; lot dependent)                                                                                                                                                                      |
| <b>Intra Assay</b>          | %CV < 10 (example only; lot dependent)                                                                                                                                                                      |
| <b>Assay Type</b>           | Sandwich ELISA                                                                                                                                                                                              |
| <b>Suitable Sample Type</b> | Tissue homogenates, cell lysates and other biological fluids                                                                                                                                                |
| <b>Sample Volume</b>        | 100 uL                                                                                                                                                                                                      |

**Images**

ELISA: Human WWP2 ELISA Kit (Colorimetric) [NBP3-38910] - Standard Curve Reference





### **Novus Biologicals USA**

10730 E. Briarwood Avenue  
Centennial, CO 80112  
USA  
Phone: 303.730.1950  
Toll Free: 1.888.506.6887  
Fax: 303.730.1966  
nb-customerservice@bio-techne.com

### **Bio-Techne Canada**

21 Canmotor Ave  
Toronto, ON M8Z 4E6  
Canada  
Phone: 905.827.6400  
Toll Free: 855.668.8722  
Fax: 905.827.6402  
canada.inquires@bio-techne.com

### **Bio-Techne Ltd**

19 Barton Lane  
Abingdon Science Park  
Abingdon, OX14 3NB, United Kingdom  
Phone: (44) (0) 1235 529449  
Free Phone: 0800 37 34 15  
Fax: (44) (0) 1235 533420  
info.EMEA@bio-techne.com

### **General Contact Information**

www.novusbio.com  
Technical Support: nb-technical@bio-techne.com  
Orders: nb-customerservice@bio-techne.com  
General: novus@novusbio.com

### **Products Related to NBP3-38910**

---

|                    |                                             |
|--------------------|---------------------------------------------|
| H00011060-P01-10ug | Recombinant Human WWP2 GST (N-Term) Protein |
| AF3075             | SOX9 Antibody [Unconjugated]                |
| NBP1-49942         | WWP2 Antibody                               |
| AF1759             | Oct-3/4 Antibody [Unconjugated]             |

---

### **Limitations**

This product is for research use only and is not approved for use in humans or in clinical diagnosis. ELISA Kits are guaranteed for 6 months from date of receipt.

For more information on our 100% guarantee, please visit [www.novusbio.com/guarantee](http://www.novusbio.com/guarantee)

Earn gift cards/discounts by submitting a review: [www.novusbio.com/reviews/submit/NBP3-38910](http://www.novusbio.com/reviews/submit/NBP3-38910)

Earn gift cards/discounts by submitting a publication using this product:  
[www.novusbio.com/publications](http://www.novusbio.com/publications)

