

# Product Datasheet

## Human WISP2 - Pre-Diluted ELISA Kit (Colorimetric) NBP3-38905

Unit Size: 1 Kit

Storage of components varies. See protocol for specific instructions.

[www.novusbio.com](http://www.novusbio.com)



[technical@novusbio.com](mailto:technical@novusbio.com)

Protocols, Publications, Related Products, Reviews, Research Tools and Images at:  
[www.novusbio.com/NBP3-38905](http://www.novusbio.com/NBP3-38905)

Updated 6/1/2026 v.20.1

Earn rewards for product  
reviews and publications.

Submit a publication at [www.novusbio.com/publications](http://www.novusbio.com/publications)

Submit a review at [www.novusbio.com/reviews/destination/NBP3-38905](http://www.novusbio.com/reviews/destination/NBP3-38905)

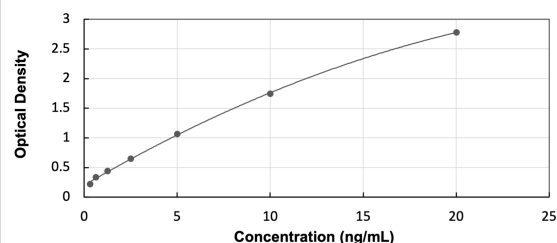


**NBP3-38905****Human WISP2 - Pre-Diluted ELISA Kit (Colorimetric)**

<b>Product Information</b>	
<b>Unit Size</b>	1 Kit
<b>Concentration</b>	Concentration is not relevant for this product. Please see the protocols for proper use of this product.
<b>Storage</b>	Storage of components varies. See protocol for specific instructions.
<b>Product Description</b>	
<b>Description</b>	The Ready-To-Use ELISA kit offers pre-diluted detection reagents and a shorter experimental time. Assay Length: 3 hours
<b>Gene ID</b>	8839
<b>Gene Symbol</b>	CCN5
<b>Species</b>	Human
<b>Kit Components</b>	Pre-coated 96T strip plate, Plate sealer for 96 wells, Standard, Standard Diluent, Detection Solution A, Detection Solution B, TMB Substrate, Stop Solution, Wash Buffer (30 x concentrate), Instruction manual
<b>Standard Curve Range</b>	0.312 - 20 ng/mL (example only; lot dependent)
<b>Sensitivity</b>	0.133 ng/mL (example only; lot dependent)
<b>Inter Assay</b>	%CV < 12 (example only; lot dependent)
<b>Intra Assay</b>	%CV < 10 (example only; lot dependent)
<b>Assay Type</b>	Sandwich ELISA
<b>Suitable Sample Type</b>	Tissue homogenates and other biological fluids
<b>Sample Volume</b>	100 uL
<b>Product Application Details</b>	
<b>Applications</b>	ELISA
<b>Recommended Dilutions</b>	ELISA

**Images**

ELISA: Human WISP2 - Ready-To-Use ELISA Kit (Colorimetric) [NBP3-38905] - Standard Curve Reference





### **Novus Biologicals USA**

10730 E. Briarwood Avenue  
Centennial, CO 80112  
USA  
Phone: 303.730.1950  
Toll Free: 1.888.506.6887  
Fax: 303.730.1966  
nb-customerservice@bio-techne.com

### **Bio-Techne Canada**

21 Canmotor Ave  
Toronto, ON M8Z 4E6  
Canada  
Phone: 905.827.6400  
Toll Free: 855.668.8722  
Fax: 905.827.6402  
canada.inquires@bio-techne.com

### **Bio-Techne Ltd**

19 Barton Lane  
Abingdon Science Park  
Abingdon, OX14 3NB, United Kingdom  
Phone: (44) (0) 1235 529449  
Free Phone: 0800 37 34 15  
Fax: (44) (0) 1235 533420  
info.EMEA@bio-techne.com

### **General Contact Information**

www.novusbio.com  
Technical Support: nb-technical@bio-techne.com  
Orders: nb-customerservice@bio-techne.com  
General: novus@novusbio.com

### **Products Related to NBP3-38905**

---

H00008839-P01-10ug	Recombinant Human WISP2 GST (N-Term) Protein
NB200-103	p53 Antibody (PAb 240) - BSA Free
NBP2-93612-0.1ml	WISP2 Antibody - BSA Free
AF887	AKT [p Ser473] Antibody [Unconjugated] - Pan Specific

---

### **Limitations**

This product is for research use only and is not approved for use in humans or in clinical diagnosis. ELISA Kits are guaranteed for 6 months from date of receipt.

For more information on our 100% guarantee, please visit [www.novusbio.com/guarantee](http://www.novusbio.com/guarantee)

Earn gift cards/discounts by submitting a review: [www.novusbio.com/reviews/submit/NBP3-38905](http://www.novusbio.com/reviews/submit/NBP3-38905)

Earn gift cards/discounts by submitting a publication using this product:  
[www.novusbio.com/publications](http://www.novusbio.com/publications)

