

Product Datasheet

EEF1D Antibody - BSA Free

NBP3-38001-100ul

Unit Size: 100 ul

Store at -20C. Avoid freeze-thaw cycles.

www.novusbio.com



technical@novusbio.com

Protocols, Publications, Related Products, Reviews, Research Tools and Images at:
www.novusbio.com/NBP3-38001

Updated 9/9/2025 v.20.1

Earn rewards for product
reviews and publications.

Submit a publication at www.novusbio.com/publications

Submit a review at www.novusbio.com/reviews/destination/NBP3-38001



NBP3-38001-100ul

EEF1D Antibody - BSA Free

Product Information

Unit Size	100 ul
Concentration	Please see the vial label for concentration. If unlisted please contact technical services.
Storage	Store at -20C. Avoid freeze-thaw cycles.
Clonality	Polyclonal
Preservative	0.02% Sodium Azide
Isotype	IgG
Purity	Affinity purified
Buffer	PBS (pH 7.3), 50% glycerol
Target Molecular Weight	31 kDa

Product Description

Description	Novus Biologicals Rabbit EEF1D Antibody - BSA Free (NBP3-38001) is a polyclonal antibody validated for use in IHC, WB, ELISA, ICC/IF and IP. All Novus Biologicals antibodies are covered by our 100% guarantee.
Host	Rabbit
Gene ID	1936
Gene Symbol	EEF1D
Species	Human, Mouse, Rat
Immunogen	Recombinant fusion protein containing a sequence corresponding to amino acids 1-160 of human EEF1D (NP_001123529.1). Sequence: MATNFLAHEKIWFDFKFKYDDAERRFYEQMNGPVAGASRQENGASVILRDIARA RENIQKSLAGSSGPGASSGTSGDHGELVVRIASLEVENQSLRGVVQELQQAIS KLEARLNVLEKSSPGHRATAPQTQHVSPMRQVEPPAKKPATPAEDDEDDDDIDL F

Product Application Details

Applications	Western Blot, Immunohistochemistry-Paraffin, ELISA, Immunocytochemistry/Immunofluorescence, Immunohistochemistry, Immunoprecipitation
Recommended Dilutions	Western Blot 1:500 - 1:2000, ELISA, Immunohistochemistry, Immunocytochemistry/Immunofluorescence 1:50 - 1:200, Immunoprecipitation 0.5ug - 4ug antibody for 200ug - 400ug extracts of whole cells, Immunohistochemistry-Paraffin 1:50 - 1:200



Images

Western Blot: EEF1D Antibody [NBP3-38001] - Western blot analysis of various lysates using EEF1D Rabbit pAb at 1:2000 dilution.

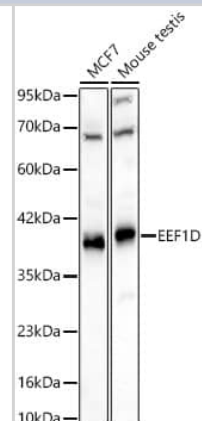
Secondary antibody: HRP-conjugated Goat anti-Rabbit IgG (H+L) at 1:10000 dilution.

Lysates / proteins: 25 ug per lane.

Blocking buffer: 3 % nonfat dry milk in TBST.

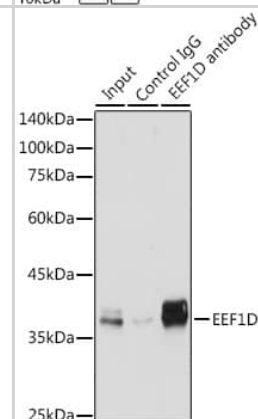
Detection: ECL Basic Kit.

Exposure time: 10s.



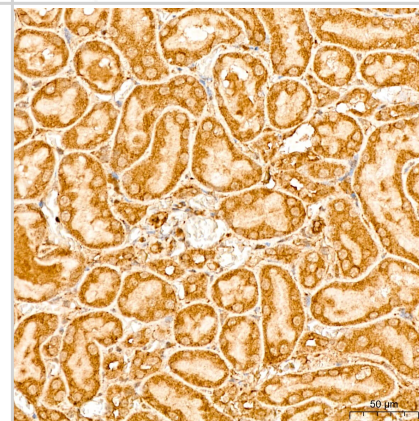
Immunoprecipitation: EEF1D Antibody [NBP3-38001] -

Immunoprecipitation of EEF1D in 300 ug extracts from Jurkat cells using 3 ug EEF1D Rabbit pAb (A2509). Western blot analysis was performed using EEF1D Rabbit pAb (A2509) at 1:500 dilution.



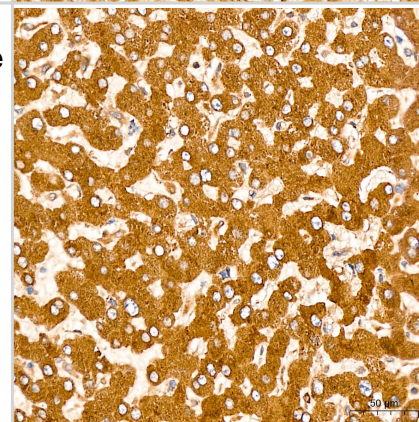
Immunohistochemistry: EEF1D Antibody [NBP3-38001] -

Immunohistochemistry analysis of paraffin-embedded Rat kidney tissue using EEF1D Rabbit pAb at a dilution of 1:200 (40x lens). High pressure antigen retrieval was performed with 0.01 M citrate buffer (pH 6.0) prior to IHC staining.

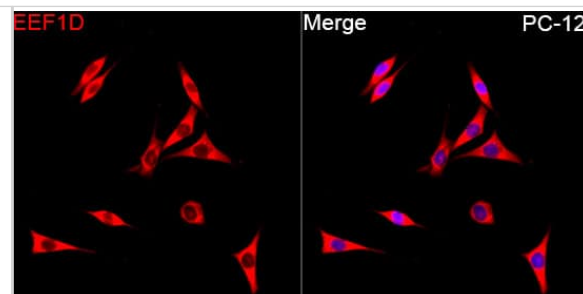


Immunohistochemistry: EEF1D Antibody [NBP3-38001] -

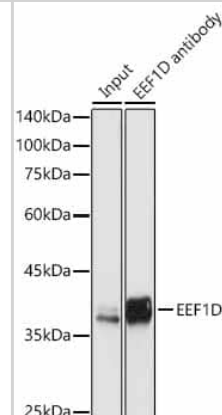
Immunohistochemistry analysis of paraffin-embedded Human liver tissue using EEF1D Rabbit pAb at a dilution of 1:200 (40x lens). High pressure antigen retrieval was performed with 0.01 M citrate buffer (pH 6.0) prior to IHC staining.



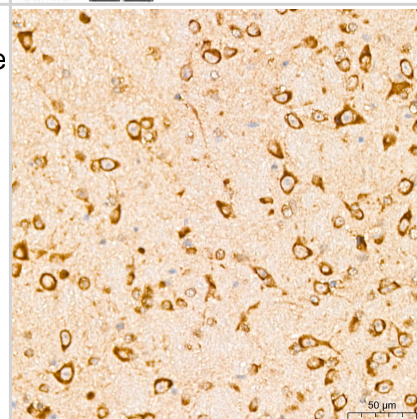
Immunocytochemistry/ Immunofluorescence: EEF1D Antibody [NBP3-38001] - Immunofluorescence analysis of PC-12 cells using EEF1D Rabbit pAb at dilution of 1:200 (40x lens). Secondary antibody: Cy3-conjugated Goat anti-Rabbit IgG (H+L) at 1:500 dilution. Blue: DAPI for nuclear staining.



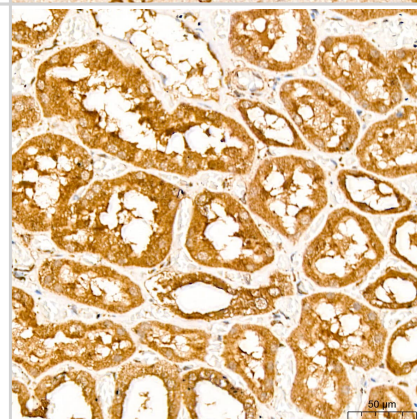
Immunoprecipitation: EEF1D Antibody [NBP3-38001] - Immunoprecipitation of EEF1D in 300 ug extracts from jurkat cells using 3 ug EEF1D Rabbit pAb at 1:500 dilution.



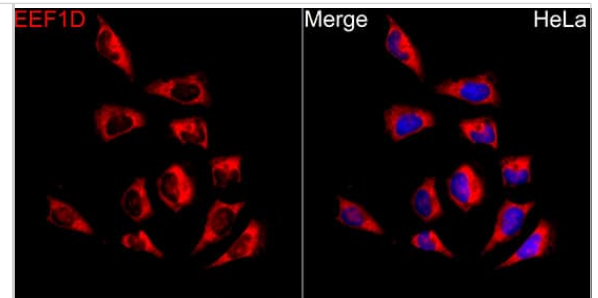
Immunohistochemistry: EEF1D Antibody [NBP3-38001] - Immunohistochemistry analysis of paraffin-embedded Mouse brain tissue using EEF1D Rabbit pAb at a dilution of 1:200 (40x lens). High pressure antigen retrieval was performed with 0.01 M citrate buffer (pH 6.0) prior to IHC staining.



Immunohistochemistry: EEF1D Antibody [NBP3-38001] - Immunohistochemistry analysis of paraffin-embedded Human kidney tissue using EEF1D Rabbit pAb at a dilution of 1:200 (40x lens). High pressure antigen retrieval was performed with 0.01 M citrate buffer (pH 6.0) prior to IHC staining.



Immunocytochemistry/ Immunofluorescence: EEF1D Antibody [NBP3-38001] - Immunofluorescence analysis of HeLa cells using EEF1D Rabbit pAb at dilution of 1:200 (40x lens). Secondary antibody: Cy3-conjugated Goat anti-Rabbit IgG (H+L) at 1:500 dilution. Blue: DAPI for nuclear staining.





Novus Biologicals USA

10730 E. Briarwood Avenue
Centennial, CO 80112
USA
Phone: 303.730.1950
Toll Free: 1.888.506.6887
Fax: 303.730.1966
nb-customerservice@bio-techne.com

Bio-Techne Canada

21 Canmotor Ave
Toronto, ON M8Z 4E6
Canada
Phone: 905.827.6400
Toll Free: 855.668.8722
Fax: 905.827.6402
canada.inquires@bio-techne.com

Bio-Techne Ltd

19 Barton Lane
Abingdon Science Park
Abingdon, OX14 3NB, United Kingdom
Phone: (44) (0) 1235 529449
Free Phone: 0800 37 34 15
Fax: (44) (0) 1235 533420
info.EMEA@bio-techne.com

General Contact Information

www.novusbio.com
Technical Support: nb-technical@bio-techne.com
Orders: nb-customerservice@bio-techne.com
General: novus@novusbio.com

Products Related to NBP3-38001-100ul

HAF008	Goat anti-Rabbit IgG Secondary Antibody [HRP]
NB7160	Goat anti-Rabbit IgG (H+L) Secondary Antibody [HRP]
NBP2-24891	Rabbit IgG Isotype Control
NBP1-51028-0.05mg	Recombinant Human EEF1D His Protein

Limitations

This product is for research use only and is not approved for use in humans or in clinical diagnosis. Primary Antibodies are guaranteed for 1 year from date of receipt.

For more information on our 100% guarantee, please visit www.novusbio.com/guarantee

Earn gift cards/discounts by submitting a review: www.novusbio.com/reviews/submit/NBP3-38001

Earn gift cards/discounts by submitting a publication using this product:
www.novusbio.com/publications

