

Product Datasheet

alpha Tubulin Antibody (PSH02-94) NBP3-33139

Unit Size: 100 ul

Store at 4C short term. Aliquot and store at -20C long term. Avoid freeze-thaw cycles.

www.novusbio.com



technical@novusbio.com

Protocols, Publications, Related Products, Reviews, Research Tools and Images at:
www.novusbio.com/NBP3-33139

Updated 9/11/2024 v.20.1

Earn rewards for product
reviews and publications.

Submit a publication at www.novusbio.com/publications

Submit a review at www.novusbio.com/reviews/destination/NBP3-33139



NBP3-33139

alpha Tubulin Antibody (PSH02-94)

Product Information	
Unit Size	100 ul
Concentration	1 mg/ml
Storage	Store at 4C short term. Aliquot and store at -20C long term. Avoid freeze-thaw cycles.
Clonality	Monoclonal
Clone	PSH02-94
Preservative	0.05% Sodium Azide
Isotype	IgG
Purity	Protein A purified
Buffer	PBS (pH7.4), 0.05% BSA and 40% Glycerol
Target Molecular Weight	55 kDa

Product Description	
Host	Rabbit
Gene ID	7846
Gene Symbol	TUBA1A
Species	Human, Mouse, Rat
Immunogen	Synthetic peptide within Human alpha Tubulin aa 402-451 / 451. (Uniprot: P68363)

Product Application Details	
Applications	Western Blot, Flow Cytometry, Immunocytochemistry/ Immunofluorescence, Immunohistochemistry, Immunohistochemistry-Paraffin
Recommended Dilutions	Western Blot 1:1000-1:5000, Flow Cytometry 1:1000, Immunohistochemistry, Immunocytochemistry/ Immunofluorescence 1:250-1:500, Immunohistochemistry-Paraffin 1:1000



Images

Western Blot: alpha Tubulin Antibody (PSH02-94) [NBP3-33139] - Western blot analysis of alpha Tubulin on different lysates with Rabbit anti-alpha Tubulin antibody (NBP3-33139) at 1/5,000 dilution.

Lane 1: HeLa cell lysate
 Lane 2: PC-12 cell lysate
 Lane 3: NIH/3T3 cell lysate
 Lane 4: Daudi cell lysate
 Lane 5: Jurkat cell lysate
 Lane 6: A431 cell lysate
 Lane 7: K-562 cell lysate

Lysates/proteins at 20 ug/Lane.

Predicted band size: 50 kDa
 Observed band size: 50 kDa

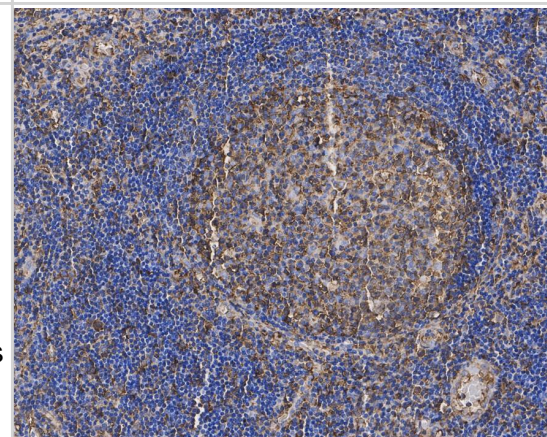
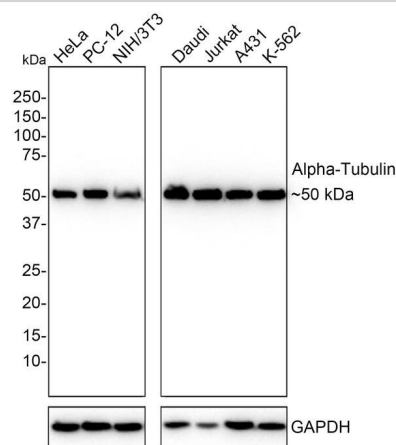
Exposure time: 1 minutes 2 seconds;

4-20% SDS-PAGE gel.

Proteins were transferred to a PVDF membrane and blocked with 5% NFDm/TBST for 1 hour at room temperature. The primary antibody (NBP3-33139) at 1/5,000 dilution was used in 5% NFDm/TBST at 4C overnight. Goat Anti-Rabbit IgG - HRP Secondary Antibody at 1/50,000 dilution was used for 1 hour at room temperature.

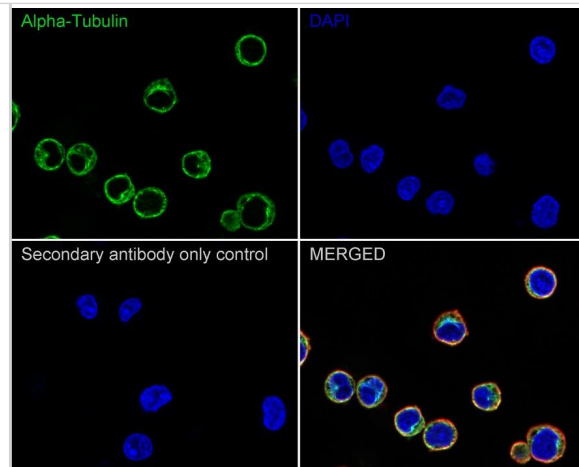
Immunohistochemistry: alpha Tubulin Antibody (PSH02-94) [NBP3-33139] - Immunohistochemical analysis of paraffin-embedded human tonsil tissue with Rabbit anti-alpha Tubulin antibody (NBP3-33139) at 1/1,000 dilution.

The section was pre-treated using heat mediated antigen retrieval with Tris-EDTA buffer (pH 9.0) for 20 minutes. The tissues were blocked in 1% BSA for 20 minutes at room temperature, washed with ddH₂O and PBS, and then probed with the primary antibody (NBP3-33139) at 1/1,000 dilution for 1 hour at room temperature. The detection was performed using an HRP conjugated compact polymer system. DAB was used as the chromogen. Tissues were counterstained with hematoxylin and mounted with DPX.



Immunocytochemistry/ Immunofluorescence: alpha Tubulin Antibody (PSH02-94) [NBP3-33139] - Immunocytochemistry analysis of Daudi cells labeling alpha Tubulin with Rabbit anti-alpha Tubulin antibody (NBP3-33139) at 1/500 dilution.

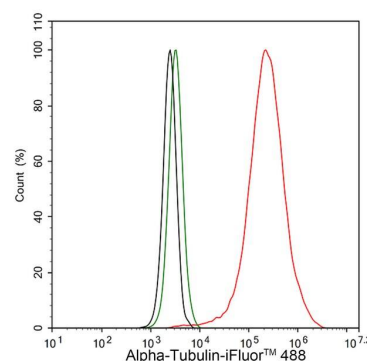
Cells were fixed in 4% paraformaldehyde for 20 minutes at room temperature, permeabilized with 0.1% Triton X-100 in PBS for 5 minutes at room temperature, then blocked with 1% BSA in 10% negative goat serum for 1 hour at room temperature. Cells were then incubated with Rabbit anti-alpha Tubulin antibody (NBP3-33139) at 1/500 dilution in 1% BSA in PBST overnight at 4 °C. Goat Anti-Rabbit IgG H&L (iFluor™ 488) was used as the secondary antibody at 1/1,000 dilution. PBS instead of the primary antibody was used as the secondary antibody only control. Nuclear DNA was labelled in blue with DAPI.



Beta tubulin (red) was stained at 1/100 dilution overnight at +4 °C. Goat Anti-Mouse IgG H&L (iFluor™ 594) was used as the secondary antibody at 1/1,000 dilution.

Flow Cytometry: alpha Tubulin Antibody (PSH02-94) [NBP3-33139] - Flow cytometric analysis of HeLa cells labeling alpha Tubulin.

Cells were fixed and permeabilized. Then stained with the primary antibody (NBP3-33139, 1 µg/mL) (red) compared with Rabbit IgG Isotype Control (green). After incubation of the primary antibody at +4 °C for an hour, the cells were stained with a iFluor™ 488 conjugate-Goat anti-Rabbit IgG Secondary antibody at 1/1,000 dilution for 30 minutes at +4 °C. Unlabelled sample was used as a control (cells without incubation with primary antibody; black).





Novus Biologicals USA

10730 E. Briarwood Avenue
Centennial, CO 80112
USA
Phone: 303.730.1950
Toll Free: 1.888.506.6887
Fax: 303.730.1966
nb-customerservice@bio-techne.com

Bio-Techne Canada

21 Canmotor Ave
Toronto, ON M8Z 4E6
Canada
Phone: 905.827.6400
Toll Free: 855.668.8722
Fax: 905.827.6402
canada.inquires@bio-techne.com

Bio-Techne Ltd

19 Barton Lane
Abingdon Science Park
Abingdon, OX14 3NB, United Kingdom
Phone: (44) (0) 1235 529449
Free Phone: 0800 37 34 15
Fax: (44) (0) 1235 533420
info.EMEA@bio-techne.com

General Contact Information

www.novusbio.com
Technical Support: nb-technical@bio-techne.com
Orders: nb-customerservice@bio-techne.com
General: novus@novusbio.com

Products Related to NBP3-33139

HAF008	Goat anti-Rabbit IgG Secondary Antibody [HRP]
NB7160	Goat anti-Rabbit IgG (H+L) Secondary Antibody [HRP]
NBP2-24891	Rabbit IgG Isotype Control
H00007846-Q01-10ug	Recombinant Human alpha Tubulin GST (N-Term) Protein

Limitations

This product is for research use only and is not approved for use in humans or in clinical diagnosis. Primary Antibodies are guaranteed for 1 year from date of receipt.

For more information on our 100% guarantee, please visit www.novusbio.com/guarantee

Earn gift cards/discounts by submitting a review: www.novusbio.com/reviews/submit/NBP3-33139

Earn gift cards/discounts by submitting a publication using this product:
www.novusbio.com/publications

