

# Product Datasheet

## TOM1 Antibody (PSH03-38)

### NBP3-33035

Unit Size: 100 ul

Store at 4C short term. Aliquot and store at -20C long term. Avoid freeze-thaw cycles.

[www.novusbio.com](http://www.novusbio.com)



[technical@novusbio.com](mailto:technical@novusbio.com)

Protocols, Publications, Related Products, Reviews, Research Tools and Images at:  
[www.novusbio.com/NBP3-33035](http://www.novusbio.com/NBP3-33035)

Updated 9/9/2025 v.20.1

Earn rewards for product  
reviews and publications.

Submit a publication at [www.novusbio.com/publications](http://www.novusbio.com/publications)

Submit a review at [www.novusbio.com/reviews/destination/NBP3-33035](http://www.novusbio.com/reviews/destination/NBP3-33035)



**NBP3-33035**

TOM1 Antibody (PSH03-38)

Product Information	
Unit Size	100 ul
Concentration	1 mg/ml
Storage	Store at 4C short term. Aliquot and store at -20C long term. Avoid freeze-thaw cycles.
Clonality	Monoclonal
Clone	PSH03-38
Preservative	0.05% Sodium Azide
Isotype	IgG
Purity	Protein A purified
Buffer	PBS (pH7.4), 0.1% BSA and 40% Glycerol
Target Molecular Weight	54 kDa

Product Description	
Description	Novus Biologicals Rabbit TOM1 Antibody (PSH03-38) (NBP3-33035) is a recombinant monoclonal antibody validated for use in IHC and WB. All Novus Biologicals antibodies are covered by our 100% guarantee.
Host	Rabbit
Gene ID	10043
Gene Symbol	TOM1
Species	Human, Mouse, Rat
Immunogen	Recombinant protein within human TOM1 aa 300-450. (Uniprot: O60784)

Product Application Details	
Applications	Western Blot, Immunohistochemistry-Paraffin, Immunohistochemistry
Recommended Dilutions	Western Blot 1:2000, Immunohistochemistry, Immunohistochemistry-Paraffin 1:200-1:1000



## Images

Western Blot: TOM1 Antibody (PSH03-38) [NBP3-33035] - Western blot analysis of TOM1 on different lysates with Rabbit anti-TOM1 antibody (NBP3-33035) at 1/2,000 dilution.

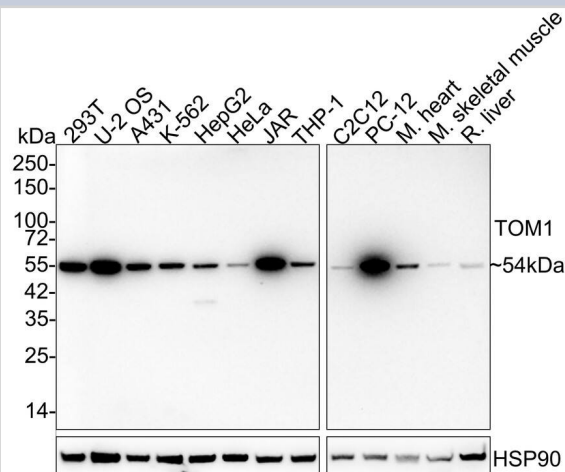
Lane 1: 293T cell lysate (20 ug/Lane)  
 Lane 2: U-2 OS cell lysate (20 ug/Lane)  
 Lane 3: A431 cell lysate (20 ug/Lane)  
 Lane 4: K-562 cell lysate (20 ug/Lane)  
 Lane 5: HepG2 cell lysate (20 ug/Lane)  
 Lane 6: HeLa cell lysate (20 ug/Lane)  
 Lane 7: JAR cell lysate (20 ug/Lane)  
 Lane 8: THP-1 cell lysate (20 ug/Lane)  
 Lane 9: C2C12 cell lysate (20 ug/Lane)  
 Lane 10: PC-12 cell lysate (20 ug/Lane)  
 Lane 11: Mouse heart tissue lysate (40 ug/Lane)  
 Lane 12: Mouse skeletal muscle tissue lysate (40 ug/Lane)  
 Lane 13: Rat liver tissue lysate (40 ug/Lane)

Predicted band size: 54 kDa  
 Observed band size: 54 kDa

Exposure time: 3 minutes;

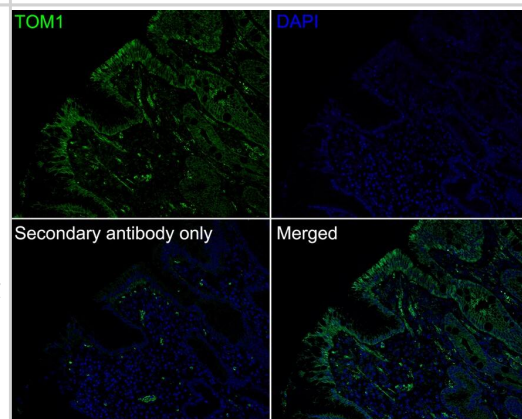
4-20% SDS-PAGE gel.

Proteins were transferred to a PVDF membrane and blocked with 5% NFDN/TBST for 1 hour at room temperature. The primary antibody (NBP3-33035) at 1/2,000 dilution was used in 5% NFDN/TBST at 4°C overnight. Goat Anti-Rabbit IgG - HRP Secondary Antibody at 1/50,000 dilution was used for 1 hour at room temperature.



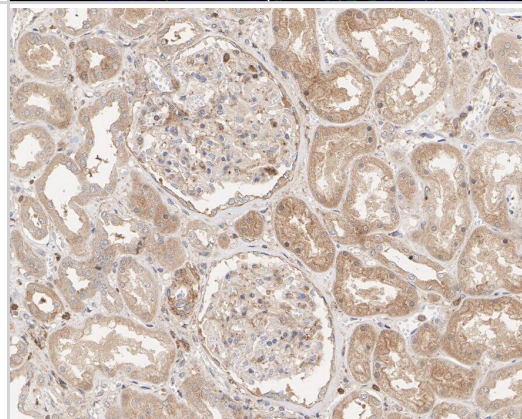
Immunohistochemistry: TOM1 Antibody (PSH03-38) [NBP3-33035] - Immunofluorescence analysis of paraffin-embedded human stomach carcinoma tissue labeling TOM1 with Rabbit anti-TOM1 antibody (NBP3-33035) at 1/200 dilution.

The section was pre-treated using heat mediated antigen retrieval with Tris-EDTA buffer (pH 9.0) for 20 minutes. The tissues were blocked in 10% negative goat serum for 1 hour at room temperature, washed with PBS, and then probed with the primary antibody (NBP3-33035, green) at 1/200 dilution overnight at 4 °C, washed with PBS. Goat Anti-Rabbit IgG H&L (iFluor™ 488) was used as the secondary antibody at 1/1,000 dilution. Nuclei were counterstained with DAPI (blue).



Immunohistochemistry: TOM1 Antibody (PSH03-38) [NBP3-33035] - Immunohistochemical analysis of paraffin-embedded human kidney tissue with Rabbit anti-TOM1 antibody (NBP3-33035) at 1/200 dilution.

The section was pre-treated using heat mediated antigen retrieval with Tris-EDTA buffer (pH 9.0) for 20 minutes. The tissues were blocked in 1% BSA for 20 minutes at room temperature, washed with ddH<sub>2</sub>O and PBS, and then probed with the primary antibody (NBP3-33035) at 1/200 dilution for 1 hour at room temperature. The detection was performed using an HRP conjugated compact polymer system. DAB was used as the chromogen. Tissues were counterstained with hematoxylin and mounted with DPX.





### **Novus Biologicals USA**

10730 E. Briarwood Avenue  
Centennial, CO 80112  
USA  
Phone: 303.730.1950  
Toll Free: 1.888.506.6887  
Fax: 303.730.1966  
nb-customerservice@bio-techne.com

### **Bio-Techne Canada**

21 Canmotor Ave  
Toronto, ON M8Z 4E6  
Canada  
Phone: 905.827.6400  
Toll Free: 855.668.8722  
Fax: 905.827.6402  
canada.inquires@bio-techne.com

### **Bio-Techne Ltd**

19 Barton Lane  
Abingdon Science Park  
Abingdon, OX14 3NB, United Kingdom  
Phone: (44) (0) 1235 529449  
Free Phone: 0800 37 34 15  
Fax: (44) (0) 1235 533420  
info.EMEA@bio-techne.com

### **General Contact Information**

www.novusbio.com  
Technical Support: nb-technical@bio-techne.com  
Orders: nb-customerservice@bio-techne.com  
General: novus@novusbio.com

### **Products Related to NBP3-33035**

---

NBP2-33376H	Blue Marker Antibody (6F4-F6) [HRP]
HAF008	Goat anti-Rabbit IgG Secondary Antibody [HRP]
NB7160	Goat anti-Rabbit IgG (H+L) Secondary Antibody [HRP]
NBP2-24891	Rabbit IgG Isotype Control

---

### **Limitations**

This product is for research use only and is not approved for use in humans or in clinical diagnosis. Primary Antibodies are guaranteed for 1 year from date of receipt.

For more information on our 100% guarantee, please visit [www.novusbio.com/guarantee](http://www.novusbio.com/guarantee)

Earn gift cards/discounts by submitting a review: [www.novusbio.com/reviews/submit/NBP3-33035](http://www.novusbio.com/reviews/submit/NBP3-33035)

Earn gift cards/discounts by submitting a publication using this product:  
[www.novusbio.com/publications](http://www.novusbio.com/publications)

