

# Product Datasheet

## **Lysine (K)-specific Demethylase 4A/KDM4A/JMJD2A Antibody (PSH03-67) NBP3-32493**

Unit Size: 100 ul

Store at 4C short term. Aliquot and store at -20C long term. Avoid freeze-thaw cycles.

[www.novusbio.com](http://www.novusbio.com)



[technical@novusbio.com](mailto:technical@novusbio.com)

Protocols, Publications, Related Products, Reviews, Research Tools and Images at:  
[www.novusbio.com/NBP3-32493](http://www.novusbio.com/NBP3-32493)

Updated 8/7/2025 v.20.1

Earn rewards for product  
reviews and publications.

Submit a publication at [www.novusbio.com/publications](http://www.novusbio.com/publications)

Submit a review at [www.novusbio.com/reviews/destination/NBP3-32493](http://www.novusbio.com/reviews/destination/NBP3-32493)



**NBP3-32493**

Lysine (K)-specific Demethylase 4A/KDM4A/JMJD2A Antibody (PSH03-67)

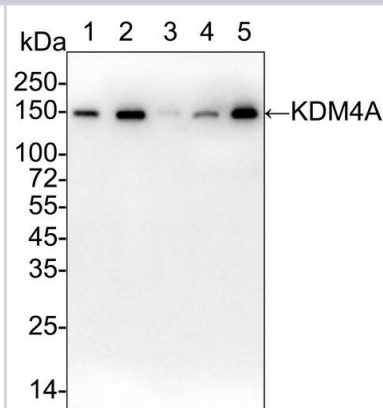
Product Information	
Unit Size	100 ul
Concentration	1 mg/ml
Storage	Store at 4C short term. Aliquot and store at -20C long term. Avoid freeze-thaw cycles.
Clonality	Monoclonal
Clone	PSH03-67
Preservative	0.05% Sodium Azide
Isotype	IgG1
Purity	Protein A purified
Buffer	PBS (pH7.4), 0.1% BSA and 40% Glycerol
Target Molecular Weight	121 kDa

Product Description	
Host	Rabbit
Gene ID	9682
Gene Symbol	KDM4A
Species	Human, Mouse, Rat
Immunogen	Recombinant protein within human Lysine (K)-specific Demethylase 4A/KDM4A/JMJD2A aa 351-650 / 1,064. (Uniprot: O75164)

Product Application Details	
Applications	Western Blot, Immunohistochemistry-Paraffin, Flow Cytometry, Immunocytochemistry/ Immunofluorescence, Immunohistochemistry
Recommended Dilutions	Western Blot 1:2000, Flow Cytometry 1:1000, Immunohistochemistry, Immunocytochemistry/ Immunofluorescence 1:100, Immunohistochemistry-Paraffin 1:500

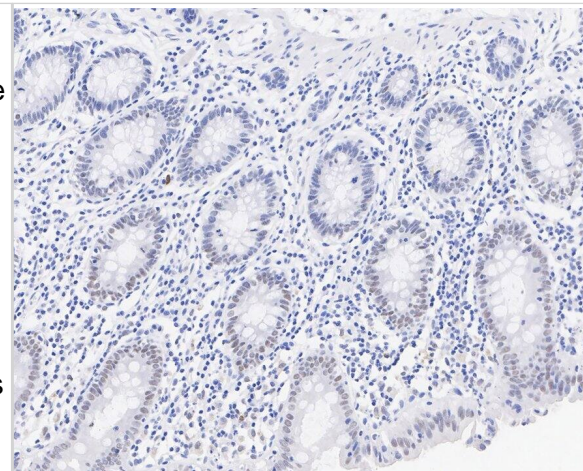
**Images**

Western Blot: Lysine (K)-specific Demethylase 4A/KDM4A/JMJD2A Antibody (PSH03-67) [NBP3-32493] - Western blot analysis of Lysine (K)-specific Demethylase 4A/KDM4A/JMJD2A on different lysates with Rabbit anti-Lysine (K)-specific Demethylase 4A/KDM4A/JMJD2A antibody (NBP3-32493) at 1/2,000 dilution.



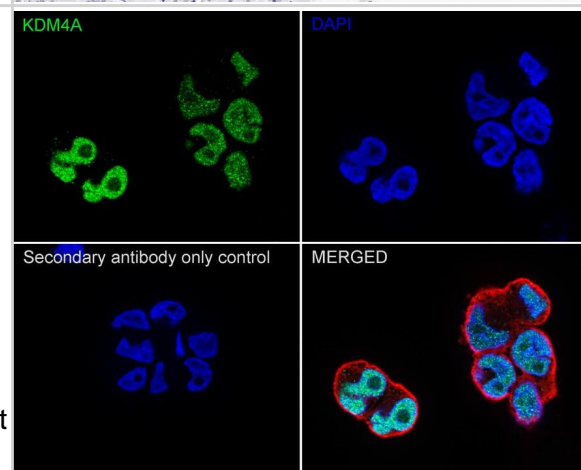
**Immunohistochemistry: Lysine (K)-specific Demethylase 4A/KDM4A/JMJD2A Antibody (PSH03-67) [NBP3-32493]** - Immunohistochemical analysis of paraffin-embedded human colon tissue with Rabbit anti-Lysine (K)-specific Demethylase 4A/KDM4A/JMJD2A antibody (NBP3-32493) at 1/1,000 dilution.

The section was pre-treated using heat mediated antigen retrieval with sodium citrate buffer (pH 6.0) for 2 minutes. The tissues were blocked in 1% BSA for 20 minutes at room temperature, washed with ddH<sub>2</sub>O and PBS, and then probed with the primary antibody (NBP3-32493) at 1/1,000 dilution for 1 hour at room temperature. The detection was performed using an HRP conjugated compact polymer system. DAB was used as the chromogen. Tissues were counterstained with hematoxylin and mounted with DPX.



**Immunocytochemistry/ Immunofluorescence: Lysine (K)-specific Demethylase 4A/KDM4A/JMJD2A Antibody (PSH03-67) [NBP3-32493]** - Immunocytochemistry analysis of NCCIT cells labeling Lysine (K)-specific Demethylase 4A/KDM4A/JMJD2A with Rabbit anti-Lysine (K)-specific Demethylase 4A/KDM4A/JMJD2A antibody (NBP3-32493) at 1/100 dilution.

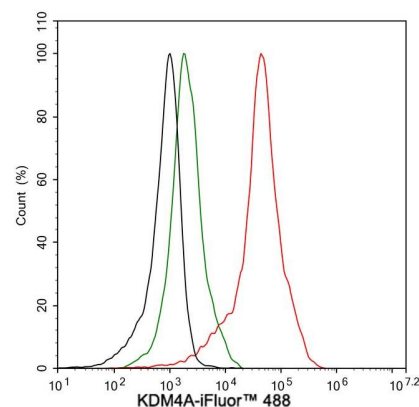
Cells were fixed in 4% paraformaldehyde for 20 minutes at room temperature, permeabilized with 0.1% Triton X-100 in PBS for 5 minutes at room temperature, then blocked with 1% BSA in 10% negative goat serum for 1 hour at room temperature. Cells were then incubated with Rabbit anti-Lysine (K)-specific Demethylase 4A/KDM4A/JMJD2A antibody (NBP3-32493) at 1/100 dilution in 1% BSA in PBST overnight at 4 °C. Goat Anti-Rabbit IgG H&L (iFluor™ 488) was used as the secondary antibody at 1/1,000 dilution. PBS instead of the primary antibody was used as the secondary antibody only control. Nuclear DNA was labelled in blue with DAPI.



Beta tubulin (red) was stained at 1/100 dilution overnight at +4 °C. Goat Anti-Mouse IgG H&L (iFluor™ 594) was used as the secondary antibody at 1/1,000 dilution.

**Flow Cytometry: Lysine (K)-specific Demethylase 4A/KDM4A/JMJD2A Antibody (PSH03-67) [NBP3-32493]** - Flow cytometric analysis of NCCIT cells labeling Lysine (K)-specific Demethylase 4A/KDM4A/JMJD2A.

Cells were fixed and permeabilized. Then stained with the primary antibody (NBP3-32493, 1 µg/mL) (red) compared with Rabbit IgG Isotype Control (green). After incubation of the primary antibody at +4 °C for an hour, the cells were stained with a iFluor™ 488 conjugate-Goat anti-Rabbit IgG Secondary antibody at 1/1,000 dilution for 30 minutes at +4 °C. Unlabelled sample was used as a control (cells without incubation with primary antibody; black).





### **Novus Biologicals USA**

10730 E. Briarwood Avenue  
Centennial, CO 80112  
USA  
Phone: 303.730.1950  
Toll Free: 1.888.506.6887  
Fax: 303.730.1966  
nb-customerservice@bio-techne.com

### **Bio-Techne Canada**

21 Canmotor Ave  
Toronto, ON M8Z 4E6  
Canada  
Phone: 905.827.6400  
Toll Free: 855.668.8722  
Fax: 905.827.6402  
canada.inquires@bio-techne.com

### **Bio-Techne Ltd**

19 Barton Lane  
Abingdon Science Park  
Abingdon, OX14 3NB, United Kingdom  
Phone: (44) (0) 1235 529449  
Free Phone: 0800 37 34 15  
Fax: (44) (0) 1235 533420  
info.EMEA@bio-techne.com

### **General Contact Information**

[www.novusbio.com](http://www.novusbio.com)  
Technical Support: nb-technical@bio-techne.com  
Orders: nb-customerservice@bio-techne.com  
General: novus@novusbio.com

### **Products Related to NBP3-32493**

---

HAF008	Goat anti-Rabbit IgG Secondary Antibody [HRP]
NB7160	Goat anti-Rabbit IgG (H+L) Secondary Antibody [HRP]
NBP1-87855PEP	Lysine (K)-specific Demethylase 4A/KDM4A/JMJD2A Recombinant Protein Antigen
DY8198-05	alpha-Defensin 1 [Biotin]

---

### **Limitations**

This product is for research use only and is not approved for use in humans or in clinical diagnosis. Primary Antibodies are guaranteed for 1 year from date of receipt.

For more information on our 100% guarantee, please visit [www.novusbio.com/guarantee](http://www.novusbio.com/guarantee)

Earn gift cards/discounts by submitting a review: [www.novusbio.com/reviews/submit/NBP3-32493](http://www.novusbio.com/reviews/submit/NBP3-32493)

Earn gift cards/discounts by submitting a publication using this product:  
[www.novusbio.com/publications](http://www.novusbio.com/publications)

