

# Product Datasheet

## GRSF1 Antibody (JE65-34)

### NBP3-32410

Unit Size: 100 ul

Store at 4C short term. Aliquot and store at -20C long term. Avoid freeze-thaw cycles.

[www.novusbio.com](http://www.novusbio.com)



[technical@novusbio.com](mailto:technical@novusbio.com)

Protocols, Publications, Related Products, Reviews, Research Tools and Images at:  
[www.novusbio.com/NBP3-32410](http://www.novusbio.com/NBP3-32410)

Updated 9/9/2025 v.20.1

Earn rewards for product reviews and publications.

Submit a publication at [www.novusbio.com/publications](http://www.novusbio.com/publications)

Submit a review at [www.novusbio.com/reviews/destination/NBP3-32410](http://www.novusbio.com/reviews/destination/NBP3-32410)



**NBP3-32410**

GRSF1 Antibody (JE65-34)

<b>Product Information</b>	
<b>Unit Size</b>	100 ul
<b>Concentration</b>	1 mg/ml
<b>Storage</b>	Store at 4C short term. Aliquot and store at -20C long term. Avoid freeze-thaw cycles.
<b>Clonality</b>	Monoclonal
<b>Clone</b>	JE65-34
<b>Preservative</b>	0.05% Sodium Azide
<b>Isotype</b>	IgG
<b>Purity</b>	Protein A purified
<b>Buffer</b>	1*TBS (pH7.4), 0.05% BSA and 40% Glycerol
<b>Target Molecular Weight</b>	53 kDa
<b>Product Description</b>	
<b>Description</b>	Novus Biologicals Rabbit GRSF1 Antibody (JE65-34) (NBP3-32410) is a recombinant monoclonal antibody validated for use in WB and ICC/IF. All Novus Biologicals antibodies are covered by our 100% guarantee.
<b>Host</b>	Rabbit
<b>Gene ID</b>	2926
<b>Gene Symbol</b>	GRSF1
<b>Species</b>	Human
<b>Immunogen</b>	Synthetic peptide within human GRSF1 aa 350-400/480. (Uniprot: Q12849)
<b>Product Application Details</b>	
<b>Applications</b>	Western Blot, Immunocytochemistry/ Immunofluorescence
<b>Recommended Dilutions</b>	Western Blot 1:500, Immunocytochemistry/ Immunofluorescence 1:50



## Images

Western Blot: GRSF1 Antibody (JE65-34) [NBP3-32410] - Western blot analysis of GRSF1 on different lysates with Rabbit anti-GRSF1 antibody (NBP3-32410) at 1/500 dilution.

Lane 1: HeLa cell lysate  
Lane 2: 293 cell lysate  
Lane 3: Jurkat cell lysate  
Lane 4: HepG2 cell lysate

Lysates/proteins at 10 ug/Lane.

Predicted band size: 53 kDa  
Observed band size: 53 kDa

Exposure time: 2 minutes;

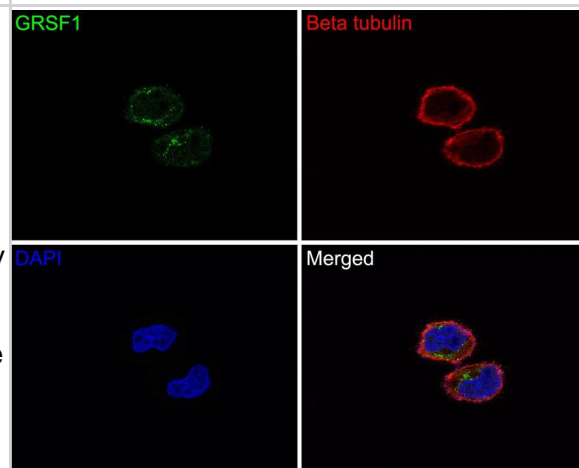
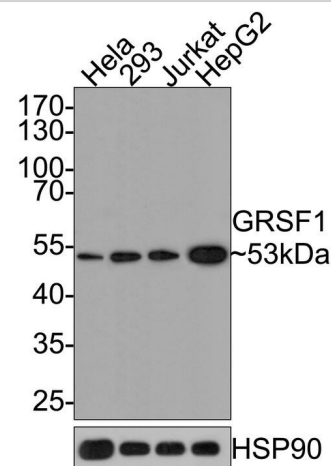
10% SDS-PAGE gel.

Proteins were transferred to a PVDF membrane and blocked with 5% NFDm/TBST for 1 hour at room temperature. The primary antibody (NBP3-32410) at 1/500 dilution was used in 5% NFDm/TBST at room temperature for 2 hours. Goat Anti-Rabbit IgG - HRP Secondary Antibody at 1:300,000 dilution was used for 1 hour at room temperature.

Immunocytochemistry/ Immunofluorescence: GRSF1 Antibody (JE65-34) [NBP3-32410] - Immunocytochemistry analysis of HeLa cells labeling GRSF1 with Rabbit anti-GRSF1 antibody (NBP3-32410) at 1/50 dilution.

Cells were fixed in 4% paraformaldehyde for 10 minutes at 37 °C, permeabilized with 0.05% Triton X-100 in PBS for 20 minutes, and then blocked with 2% negative goat serum for 30 minutes at room temperature. Cells were then incubated with Rabbit anti-GRSF1 antibody (NBP3-32410) at 1/50 dilution in 2% negative goat serum overnight at 4 °C. Goat Anti-Rabbit IgG H&L (Alexa Fluor® 488) was used as the secondary antibody at 1/1,000 dilution. Nuclear DNA was labelled in blue with DAPI.

Beta tubulin (red) was stained at 1/200 dilution overnight at +4 °C. Goat Anti-Mouse IgG H&L (Alexa Fluor® 647) were used as the secondary antibody at 1/1,000 dilution.





### **Novus Biologicals USA**

10730 E. Briarwood Avenue  
Centennial, CO 80112  
USA  
Phone: 303.730.1950  
Toll Free: 1.888.506.6887  
Fax: 303.730.1966  
nb-customerservice@bio-techne.com

### **Bio-Techne Canada**

21 Canmotor Ave  
Toronto, ON M8Z 4E6  
Canada  
Phone: 905.827.6400  
Toll Free: 855.668.8722  
Fax: 905.827.6402  
canada.inquires@bio-techne.com

### **Bio-Techne Ltd**

19 Barton Lane  
Abingdon Science Park  
Abingdon, OX14 3NB, United Kingdom  
Phone: (44) (0) 1235 529449  
Free Phone: 0800 37 34 15  
Fax: (44) (0) 1235 533420  
info.EMEA@bio-techne.com

### **General Contact Information**

www.novusbio.com  
Technical Support: nb-technical@bio-techne.com  
Orders: nb-customerservice@bio-techne.com  
General: novus@novusbio.com

### **Products Related to NBP3-32410**

---

NBP2-33376H	Blue Marker Antibody (6F4-F6) [HRP]
HAF008	Goat anti-Rabbit IgG Secondary Antibody [HRP]
NB7160	Goat anti-Rabbit IgG (H+L) Secondary Antibody [HRP]
NBP2-24891	Rabbit IgG Isotype Control

---

### **Limitations**

This product is for research use only and is not approved for use in humans or in clinical diagnosis. Primary Antibodies are guaranteed for 1 year from date of receipt.

For more information on our 100% guarantee, please visit [www.novusbio.com/guarantee](http://www.novusbio.com/guarantee)

Earn gift cards/discounts by submitting a review: [www.novusbio.com/reviews/submit/NBP3-32410](http://www.novusbio.com/reviews/submit/NBP3-32410)

Earn gift cards/discounts by submitting a publication using this product:  
[www.novusbio.com/publications](http://www.novusbio.com/publications)

