

# Product Datasheet

## SPEM2 Antibody (PSH02-66)

### NBP3-32095

Unit Size: 100 ul

Store at 4C short term. Aliquot and store at -20C long term. Avoid freeze-thaw cycles.

[www.novusbio.com](http://www.novusbio.com)



[technical@novusbio.com](mailto:technical@novusbio.com)

Protocols, Publications, Related Products, Reviews, Research Tools and Images at:  
[www.novusbio.com/NBP3-32095](http://www.novusbio.com/NBP3-32095)

Updated 9/9/2025 v.20.1

Earn rewards for product  
reviews and publications.

Submit a publication at [www.novusbio.com/publications](http://www.novusbio.com/publications)

Submit a review at [www.novusbio.com/reviews/destination/NBP3-32095](http://www.novusbio.com/reviews/destination/NBP3-32095)



**NBP3-32095**

SPEM2 Antibody (PSH02-66)

| Product Information     |  |
|-------------------------|--|
| Unit Size               | 100 ul   |
| Concentration           | 1 mg/ml  |
| Storage                 | Store at 4C short term. Aliquot and store at -20C long term. Avoid freeze-thaw cycles. |
| Clonality               | Monoclonal   |
| Clone                   | PSH02-66   |
| Preservative            | 0.05% Sodium Azide   |
| Isotype                 | IgG  |
| Purity                  | Protein A purified   |
| Buffer                  | PBS (pH7.4), 0.1% BSA and 40% Glycerol   |
| Target Molecular Weight | 57 kDa   |

| Product Description |   |
|---------------------|---|
| Description         | Novus Biologicals Rabbit SPEM2 Antibody (PSH02-66) (NBP3-32095) is a recombinant monoclonal antibody validated for use in IHC and WB. All Novus Biologicals antibodies are covered by our 100% guarantee. |
| Host                | Rabbit  |
| Gene ID             | 201243  |
| Gene Symbol         | SPEM2   |
| Species             | Human, Mouse, Rat   |
| Immunogen           | Recombinant protein within human SPEM2 aa 202-501 / 501. (Uniprot: Q0P670)  |

| Product Application Details |  |
|-----------------------------|--|
| Applications                | Western Blot, Immunohistochemistry-Paraffin, Immunohistochemistry              |
| Recommended Dilutions       | Western Blot 1:1000, Immunohistochemistry, Immunohistochemistry-Paraffin 1:200 |



## Images

Western Blot: SPEM2 Antibody (PSH02-66) [NBP3-32095] - Western blot analysis of SPEM2 on different lysates with Rabbit anti-SPEM2 antibody (NBP3-32095) at 1/1,000 dilution.

Lane 1: HEK-293-NT cell lysate

Lane 2: HEK-293-OE-c17orf74 cell lysate

Lysates/proteins at 20 ug/Lane.

Predicted band size: 57 kDa

Observed band size: 57 kDa

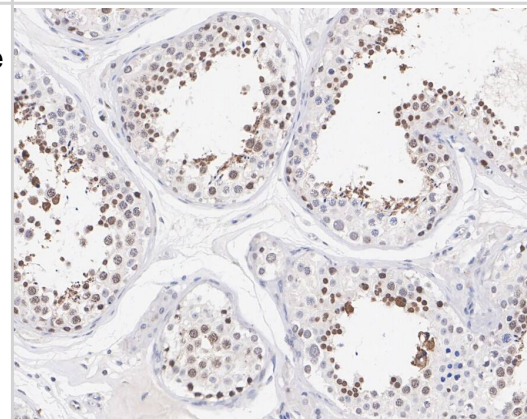
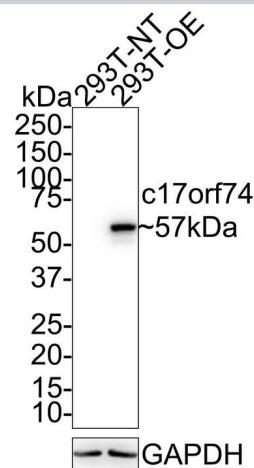
Exposure time: 24 seconds;

4-20% SDS-PAGE gel.

Proteins were transferred to a PVDF membrane and blocked with 5% NFDm/TBST for 1 hour at room temperature. The primary antibody (NBP3-32095) at 1/1,000 dilution was used in 5% NFDm/TBST at 4C overnight. Goat Anti-Rabbit IgG - HRP Secondary Antibody at 1/50,000 dilution was used for 1 hour at room temperature.

Immunohistochemistry: SPEM2 Antibody (PSH02-66) [NBP3-32095] - Immunohistochemical analysis of paraffin-embedded human testis tissue with Rabbit anti-SPEM2 antibody (NBP3-32095) at 1/200 dilution.

The section was pre-treated using heat mediated antigen retrieval with Tris-EDTA buffer (pH 9.0) for 20 minutes. The tissues were blocked in 1% BSA for 20 minutes at room temperature, washed with ddH<sub>2</sub>O and PBS, and then probed with the primary antibody (NBP3-32095) at 1/200 dilution for 1 hour at room temperature. The detection was performed using an HRP conjugated compact polymer system. DAB was used as the chromogen. Tissues were counterstained with hematoxylin and mounted with DPX.





### **Novus Biologicals USA**

10730 E. Briarwood Avenue  
Centennial, CO 80112  
USA  
Phone: 303.730.1950  
Toll Free: 1.888.506.6887  
Fax: 303.730.1966  
nb-customerservice@bio-techne.com

### **Bio-Techne Canada**

21 Canmotor Ave  
Toronto, ON M8Z 4E6  
Canada  
Phone: 905.827.6400  
Toll Free: 855.668.8722  
Fax: 905.827.6402  
canada.inquires@bio-techne.com

### **Bio-Techne Ltd**

19 Barton Lane  
Abingdon Science Park  
Abingdon, OX14 3NB, United Kingdom  
Phone: (44) (0) 1235 529449  
Free Phone: 0800 37 34 15  
Fax: (44) (0) 1235 533420  
info.EMEA@bio-techne.com

### **General Contact Information**

www.novusbio.com  
Technical Support: nb-technical@bio-techne.com  
Orders: nb-customerservice@bio-techne.com  
General: novus@novusbio.com

### **Products Related to NBP3-32095**

---

|             |   |
|-------------|---|
| NBP2-33376H | Blue Marker Antibody (6F4-F6) [HRP]                 |
| HAF008      | Goat anti-Rabbit IgG Secondary Antibody [HRP]       |
| NB7160      | Goat anti-Rabbit IgG (H+L) Secondary Antibody [HRP] |
| NBP2-24891  | Rabbit IgG Isotype Control                          |

---

### **Limitations**

This product is for research use only and is not approved for use in humans or in clinical diagnosis. Primary Antibodies are guaranteed for 1 year from date of receipt.

For more information on our 100% guarantee, please visit [www.novusbio.com/guarantee](http://www.novusbio.com/guarantee)

Earn gift cards/discounts by submitting a review: [www.novusbio.com/reviews/submit/NBP3-32095](http://www.novusbio.com/reviews/submit/NBP3-32095)

Earn gift cards/discounts by submitting a publication using this product:  
[www.novusbio.com/publications](http://www.novusbio.com/publications)

