

# Product Datasheet

## CRHR2/CRF2 Antibody NBP3-30958-100ug

Unit Size: 100 ug

Store at -20C. Avoid freeze-thaw cycles.

[www.novusbio.com](http://www.novusbio.com)



[technical@novusbio.com](mailto:technical@novusbio.com)

Protocols, Publications, Related Products, Reviews, Research Tools and Images at:  
[www.novusbio.com/NBP3-30958](http://www.novusbio.com/NBP3-30958)

Updated 10/30/2024 v.20.1

Earn rewards for product  
reviews and publications.

Submit a publication at [www.novusbio.com/publications](http://www.novusbio.com/publications)

Submit a review at [www.novusbio.com/reviews/destination/NBP3-30958](http://www.novusbio.com/reviews/destination/NBP3-30958)



**NBP3-30958-100ug**

CRHR2/CRF2 Antibody

**Product Information**

<b>Unit Size</b>	100 ug
<b>Concentration</b>	Please see the vial label for concentration. If unlisted please contact technical services.
<b>Storage</b>	Store at -20C. Avoid freeze-thaw cycles.
<b>Clonality</b>	Polyclonal
<b>Preservative</b>	0.08% Sodium Azide
<b>Purity</b>	Antigen Affinity-purified
<b>Buffer</b>	Phosphate buffered saline

**Product Description**

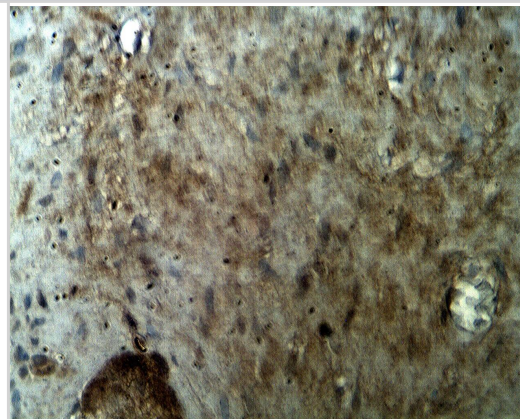
<b>Host</b>	Rabbit
<b>Gene ID</b>	1395
<b>Gene Symbol</b>	CRHR2
<b>Species</b>	Human
<b>Immunogen</b>	Synthetic peptide derived from the N-terminal region of the CRHR2/CRF2 protein.

**Product Application Details**

<b>Applications</b>	Western Blot, ELISA, Immunohistochemistry-Paraffin
<b>Recommended Dilutions</b>	Western Blot : 1:400, ELISA, Immunohistochemistry-Paraffin : 2-10 ug/ml

**Images**

Immunohistochemistry: CRHR2/CRF2 Antibody [NBP3-30958] - Staining of normal human colorectal tissue with CRFR1 antibody (Cat. No. NBP3-30958) at 2 ug/ml.





### **Novus Biologicals USA**

10730 E. Briarwood Avenue  
Centennial, CO 80112  
USA  
Phone: 303.730.1950  
Toll Free: 1.888.506.6887  
Fax: 303.730.1966  
nb-customerservice@bio-techne.com

### **Bio-Techne Canada**

21 Canmotor Ave  
Toronto, ON M8Z 4E6  
Canada  
Phone: 905.827.6400  
Toll Free: 855.668.8722  
Fax: 905.827.6402  
canada.inquires@bio-techne.com

### **Bio-Techne Ltd**

19 Barton Lane  
Abingdon Science Park  
Abingdon, OX14 3NB, United Kingdom  
Phone: (44) (0) 1235 529449  
Free Phone: 0800 37 34 15  
Fax: (44) (0) 1235 533420  
info.EMEA@bio-techne.com

### **General Contact Information**

www.novusbio.com  
Technical Support: nb-technical@bio-techne.com  
Orders: nb-customerservice@bio-techne.com  
General: novus@novusbio.com

### **Products Related to NBP3-30958-100ug**

---

HAF008	Goat anti-Rabbit IgG Secondary Antibody [HRP]
NB7160	Goat anti-Rabbit IgG (H+L) Secondary Antibody [HRP]
NBP2-13875PEP	CRHR2/CRF2 Recombinant Protein Antigen
210-TA-005	TNF-alpha [Unconjugated]

---

### **Limitations**

This product is for research use only and is not approved for use in humans or in clinical diagnosis. Primary Antibodies are guaranteed for 1 year from date of receipt.

For more information on our 100% guarantee, please visit [www.novusbio.com/guarantee](http://www.novusbio.com/guarantee)

Earn gift cards/discounts by submitting a review: [www.novusbio.com/reviews/submit/NBP3-30958](http://www.novusbio.com/reviews/submit/NBP3-30958)

Earn gift cards/discounts by submitting a publication using this product:  
[www.novusbio.com/publications](http://www.novusbio.com/publications)

