

Product Datasheet

Enolase 2/Neuron-specific Enolase Antibody (NSE-P2) NBP3-30895-200ug

Unit Size: 200 ug

Store at -20C. Avoid freeze-thaw cycles.

www.novusbio.com



technical@novusbio.com

Protocols, Publications, Related Products, Reviews, Research Tools and Images at:
www.novusbio.com/NBP3-30895

Updated 10/30/2024 v.20.1

Earn rewards for product
reviews and publications.

Submit a publication at www.novusbio.com/publications

Submit a review at www.novusbio.com/reviews/destination/NBP3-30895



NBP3-30895-200ug**Enolase 2/Neuron-specific Enolase Antibody (NSE-P2)**

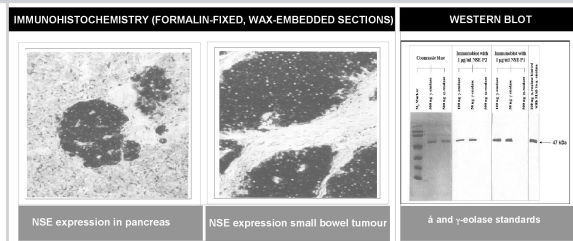
Product Information	
Unit Size	200 ug
Concentration	Please see the vial label for concentration. If unlisted please contact technical services.
Storage	Store at -20C. Avoid freeze-thaw cycles.
Clonality	Monoclonal
Clone	NSE-P2
Preservative	0.08% Sodium Azide
Isotype	IgG1
Purity	Protein A or G purified
Buffer	Phosphate buffered saline

Product Description	
Host	Mouse
Gene ID	2026
Gene Symbol	ENO2
Species	Human, Mouse, Chicken
Immunogen	Hybridoma produced by the fusion of splenocytes from BALB/c mice immunized with a synthetic peptide derived from the human Enolase 2/Neuron-specific Enolase protein and mouse myeloma Ag8563 cells. Sequence common in human, mouse and chicken.

Product Application Details	
Applications	Western Blot, ELISA, Immunohistochemistry-Paraffin
Recommended Dilutions	Western Blot : 1-2 ug/ml, ELISA, Immunohistochemistry-Paraffin : 1-5 ug/ml

Images

Immunohistochemistry: Enolase 2/Neuron-specific Enolase Antibody (NSE-P2) [NBP3-30895] - Left and Center: Immunohistochemical staining of normal pancreas tissue (left) and small bowel tumor tissue (center) using NSE antibody (X2070M and NBP3-30895). Right: Western blot analysis using NSE antibodies (X2070M and NBP3-30895) on α and γ enolase standards.





Novus Biologicals USA

10730 E. Briarwood Avenue
Centennial, CO 80112
USA
Phone: 303.730.1950
Toll Free: 1.888.506.6887
Fax: 303.730.1966
nb-customerservice@bio-techne.com

Bio-Techne Canada

21 Canmotor Ave
Toronto, ON M8Z 4E6
Canada
Phone: 905.827.6400
Toll Free: 855.668.8722
Fax: 905.827.6402
canada.inquires@bio-techne.com

Bio-Techne Ltd

19 Barton Lane
Abingdon Science Park
Abingdon, OX14 3NB, United Kingdom
Phone: (44) (0) 1235 529449
Free Phone: 0800 37 34 15
Fax: (44) (0) 1235 533420
info.EMEA@bio-techne.com

General Contact Information

www.novusbio.com
Technical Support: nb-technical@bio-techne.com
Orders: nb-customerservice@bio-techne.com
General: novus@novusbio.com

Products Related to NBP3-30895-200ug

HAF007	Goat anti-Mouse IgG Secondary Antibody [HRP]
NB720-B	Rabbit anti-Mouse IgG (H+L) Secondary Antibody [Biotin]
NBP1-97005-0.5mg	Mouse IgG1 Isotype Control (MG1)
NBP2-61382-1mg	Recombinant Human Enolase 2/Neuron-specific Enolase Protein

Limitations

This product is for research use only and is not approved for use in humans or in clinical diagnosis. Primary Antibodies are guaranteed for 1 year from date of receipt.

For more information on our 100% guarantee, please visit www.novusbio.com/guarantee

Earn gift cards/discounts by submitting a review: www.novusbio.com/reviews/submit/NBP3-30895

Earn gift cards/discounts by submitting a publication using this product:
www.novusbio.com/publications

