

# Product Datasheet

## NEDD4L Antibody NBP3-29856

Unit Size: 20 ug

Store at 4C. Do not freeze.

[www.novusbio.com](http://www.novusbio.com)



[technical@novusbio.com](mailto:technical@novusbio.com)

Protocols, Publications, Related Products, Reviews, Research Tools and Images at:  
[www.novusbio.com/NBP3-29856](http://www.novusbio.com/NBP3-29856)

Updated 9/9/2025 v.20.1

Earn rewards for product  
reviews and publications.

Submit a publication at [www.novusbio.com/publications](http://www.novusbio.com/publications)

Submit a review at [www.novusbio.com/reviews/destination/NBP3-29856](http://www.novusbio.com/reviews/destination/NBP3-29856)



**NBP3-29856****NEDD4L Antibody****Product Information**

<b>Unit Size</b>	20 ug
<b>Concentration</b>	Please see the vial label for concentration. If unlisted please contact technical services.
<b>Storage</b>	Store at 4C. Do not freeze.
<b>Clonality</b>	Polyclonal
<b>Preservative</b>	0.09% Sodium Azide
<b>Isotype</b>	IgG
<b>Purity</b>	Affinity purified
<b>Buffer</b>	Tris-buffered Saline 0.1% BSA

**Product Description**

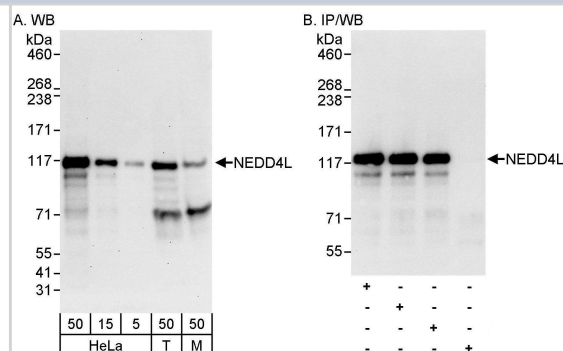
<b>Description</b>	Novus Biologicals Rabbit NEDD4L Antibody (NBP3-29856) is a polyclonal antibody validated for use in WB and IP. All Novus Biologicals antibodies are covered by our 100% guarantee.
<b>Host</b>	Rabbit
<b>Gene ID</b>	23327
<b>Gene Symbol</b>	NEDD4L
<b>Species</b>	Human, Mouse
<b>Immunogen</b>	between 425 and 475
<b>Assay Type</b>	[Assay Type]
<b>Sample Volume</b>	[Sample Volume]

**Product Application Details**

<b>Applications</b>	Western Blot, Immunoprecipitation
<b>Recommended Dilutions</b>	Western Blot, Immunoprecipitation

**Images**

Western Blot:[NBP3-29856]-Detection of human and mouse NEDD4L by western blot and immunoprecipitation. Samples: Whole cell lysate from HeLa , HEK293T , and mouse NIH 3T3 cells. Antibodies: Affinity purified rabbit anti-NEDD4L antibody used for WB at 0. 04 µg/ml and 0. 4 µg/ml and used for IP at 3 µg/mg lysate. NEDD4L was also immunoprecipitated by rabbit anti-NEDD4L antibodies and , which recognize upstream epitopes. Detection: Chemiluminescence with exposure times of 30 second and 10 seconds.





### **Novus Biologicals USA**

10730 E. Briarwood Avenue  
Centennial, CO 80112  
USA  
Phone: 303.730.1950  
Toll Free: 1.888.506.6887  
Fax: 303.730.1966  
nb-customerservice@bio-techne.com

### **Bio-Techne Canada**

21 Canmotor Ave  
Toronto, ON M8Z 4E6  
Canada  
Phone: 905.827.6400  
Toll Free: 855.668.8722  
Fax: 905.827.6402  
canada.inquires@bio-techne.com

### **Bio-Techne Ltd**

19 Barton Lane  
Abingdon Science Park  
Abingdon, OX14 3NB, United Kingdom  
Phone: (44) (0) 1235 529449  
Free Phone: 0800 37 34 15  
Fax: (44) (0) 1235 533420  
info.EMEA@bio-techne.com

### **General Contact Information**

www.novusbio.com  
Technical Support: nb-technical@bio-techne.com  
Orders: nb-customerservice@bio-techne.com  
General: novus@novusbio.com

### **Products Related to NBP3-29856**

---

HAF008	Goat anti-Rabbit IgG Secondary Antibody [HRP]
NB7160	Goat anti-Rabbit IgG (H+L) Secondary Antibody [HRP]
NBP2-24891	Rabbit IgG Isotype Control
H00023327-P01-10ug	Recombinant Human NEDD4L GST (N-Term) Protein

---

### **Limitations**

This product is for research use only and is not approved for use in humans or in clinical diagnosis. Primary Antibodies are guaranteed for 1 year from date of receipt.

For more information on our 100% guarantee, please visit [www.novusbio.com/guarantee](http://www.novusbio.com/guarantee)

Earn gift cards/discounts by submitting a review: [www.novusbio.com/reviews/submit/NBP3-29856](http://www.novusbio.com/reviews/submit/NBP3-29856)

Earn gift cards/discounts by submitting a publication using this product:  
[www.novusbio.com/publications](http://www.novusbio.com/publications)

