

# Product Datasheet

## **PSMA/FOLH1/NAALADase I Antibody - Humanized, (Research Grade rosopatamab Biosimilar) - Low Endotoxin, Azide and BSA Free NBP3-28155-100ug**

Unit Size: 100 ug

Store at 4C.

[www.novusbio.com](http://www.novusbio.com)



[technical@novusbio.com](mailto:technical@novusbio.com)

Protocols, Publications, Related Products, Reviews, Research Tools and Images at:  
[www.novusbio.com/NBP3-28155](http://www.novusbio.com/NBP3-28155)

Updated 3/13/2025 v.20.1

Earn rewards for product  
reviews and publications.

Submit a publication at [www.novusbio.com/publications](http://www.novusbio.com/publications)

Submit a review at [www.novusbio.com/reviews/destination/NBP3-28155](http://www.novusbio.com/reviews/destination/NBP3-28155)



**NBP3-28155-100ug**

PSMA/FOLH1/NAALADase I Antibody - Humanized, (Research Grade rosopatamab Biosimilar) - Low Endotoxin, Azide and BSA Free

**Product Information**

|                                    |   |
|------------------------------------|---|
| <b>Unit Size</b>                   | 100 ug  |
| <b>Concentration</b>               | LYOPH mg/ml   |
| <b>Storage</b>                     | Store at 4C.  |
| <b>Clonality</b>                   | Monoclonal  |
| <b>Preservative</b>                | No Preservative   |
| <b>Reconstitution Instructions</b> | Reconstitute with sterile, distilled water to a final concentration of 1 mg/ml. Gently shake to solubilize completely. Do not vortex. |
| <b>Isotype</b>                     | IgG1  |
| <b>Purity</b>                      | Protein A purified  |
| <b>Buffer</b>                      | Lyophilized from 25mM histidine, 8% sucrose, 0.01% Tween80 (pH6.2)  |

**Product Description**

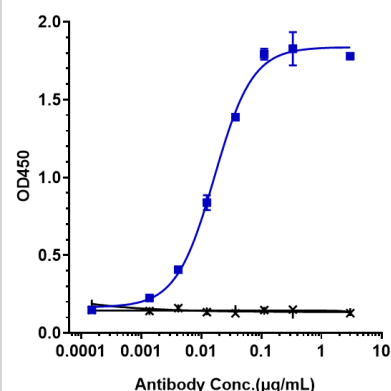
|                       |   |
|-----------------------|---|
| <b>Description</b>    | <p>Expressed from CHO. The heavy chain type is hulG1, and the light chain type is hukappa. It has a predicted MW of 146.08 kDa.</p> <p>Also known as 'rosopatamab'.</p> <p>Upon receipt, store immediately at -20C or lower for 24 months in a lyophilized state. - 80C for 3 months after reconstitution. Avoid repeated freeze-thaw cycles.</p> |
| <b>Host</b>           | Human   |
| <b>Gene ID</b>        | 2346  |
| <b>Gene Symbol</b>    | FOLH1   |
| <b>Species</b>        | Human   |
| <b>Immunogen</b>      | FOLH1 / PSMA  |
| <b>Endotoxin Note</b> | < 0.001EU/ug,determined by LAL method.  |

**Product Application Details**

|                              |                                   |
|------------------------------|-----------------------------------|
| <b>Applications</b>          | ELISA, Flow Cytometry, Functional |
| <b>Recommended Dilutions</b> | Flow Cytometry, ELISA, Functional |

**Images**

Immobilized human FOLH1/PSMA, Fc Tag at 2 ug/mL can bind PSMA/FOLH1/NAALADase I Antibody (rosopatamab) - Humanized, EC50=0.01643 ug/mL.





### **Novus Biologicals USA**

10730 E. Briarwood Avenue  
Centennial, CO 80112  
USA  
Phone: 303.730.1950  
Toll Free: 1.888.506.6887  
Fax: 303.730.1966  
nb-customerservice@bio-techne.com

### **Bio-Techne Canada**

21 Canmotor Ave  
Toronto, ON M8Z 4E6  
Canada  
Phone: 905.827.6400  
Toll Free: 855.668.8722  
Fax: 905.827.6402  
canada.inquires@bio-techne.com

### **Bio-Techne Ltd**

19 Barton Lane  
Abingdon Science Park  
Abingdon, OX14 3NB, United Kingdom  
Phone: (44) (0) 1235 529449  
Free Phone: 0800 37 34 15  
Fax: (44) (0) 1235 533420  
info.EMEA@bio-techne.com

### **General Contact Information**

[www.novusbio.com](http://www.novusbio.com)  
Technical Support: nb-technical@bio-techne.com  
Orders: nb-customerservice@bio-techne.com  
General: novus@novusbio.com

### **Products Related to NBP3-28155-100ug**

|                 |   |
|-----------------|---|
| G-102-C         | Goat anti-Human IgG Secondary Antibody [Unconjugated] |
| NB7446          | Goat anti-Human IgG Fc Secondary Antibody             |
| DDXCH01P-100    | Human IgG1 Isotype Control                            |
| NBP3-12866-10ug | Recombinant Human PSMA/FOLH1/NAALADase I His Protein  |

### **Limitations**

This product is for research use only and is not approved for use in humans or in clinical diagnosis. Primary Antibodies are guaranteed for 1 year from date of receipt.

For more information on our 100% guarantee, please visit [www.novusbio.com/guarantee](http://www.novusbio.com/guarantee)

Earn gift cards/discounts by submitting a review: [www.novusbio.com/reviews/submit/NBP3-28155](http://www.novusbio.com/reviews/submit/NBP3-28155)

Earn gift cards/discounts by submitting a publication using this product:  
[www.novusbio.com/publications](http://www.novusbio.com/publications)

