

# Product Datasheet

## MAML3 Antibody (MMLP3-1) NBP3-27931

Unit Size: 100 ug

Store at 4C.

[www.novusbio.com](http://www.novusbio.com)



[technical@novusbio.com](mailto:technical@novusbio.com)

Protocols, Publications, Related Products, Reviews, Research Tools and Images at:  
[www.novusbio.com/NBP3-27931](http://www.novusbio.com/NBP3-27931)

Updated 10/13/2025 v.20.1

Earn rewards for product  
reviews and publications.

Submit a publication at [www.novusbio.com/publications](http://www.novusbio.com/publications)

Submit a review at [www.novusbio.com/reviews/destination/NBP3-27931](http://www.novusbio.com/reviews/destination/NBP3-27931)



**NBP3-27931**

MAML3 Antibody (MMLP3-1)

Product Information	
Unit Size	100 ug
Concentration	0.2 mg/ml
Storage	Store at 4C.
Clonality	Monoclonal
Clone	MMLP3-1
Preservative	0.05% Sodium Azide
Isotype	IgG1
Purity	Protein G purified
Buffer	PBS, 0.1 mg/ml BSA

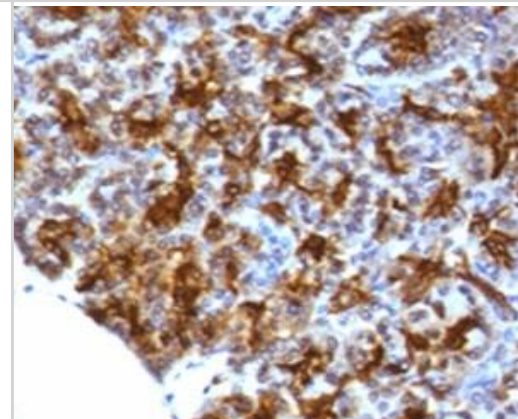
Product Description	
Description	Novus Biologicals Mouse MAML3 Antibody (MMLP3-1) (NBP3-27931) is a monoclonal antibody validated for use in IHC, Flow and ICC/IF. All Novus Biologicals antibodies are covered by our 100% guarantee.
Host	Mouse
Gene ID	55534
Gene Symbol	MAML3
Species	Human
Immunogen	A human full length recombinant protein was used as the immunogen for this MAML3 antibody.

Product Application Details	
Applications	Immunohistochemistry-Paraffin, Flow Cytometry, Immunocytochemistry/ Immunofluorescence
Recommended Dilutions	Flow Cytometry, Immunocytochemistry/ Immunofluorescence, Immunohistochemistry-Paraffin 0.5 - 1 ug/ml

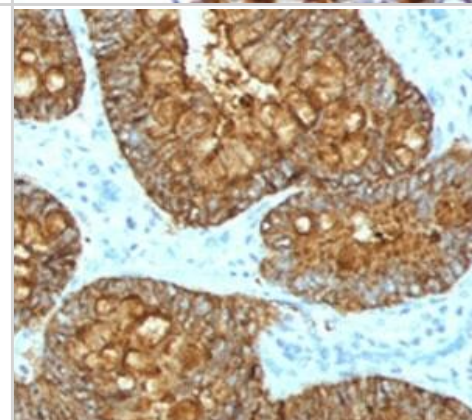


## Images

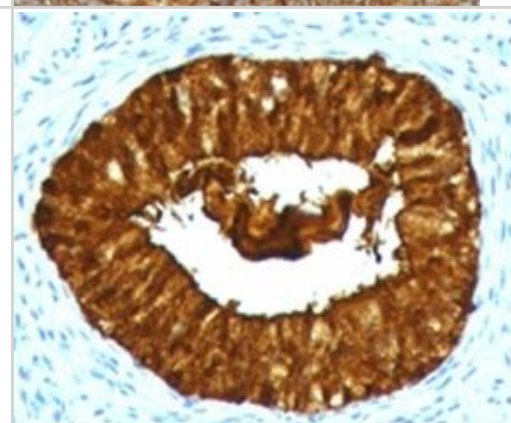
Immunohistochemistry: MAML3 Antibody (MMLP3-1) [NBP3-27931] - IHC testing of FFPE human pancreas with MAML3 antibody (clone MMLP3-1).



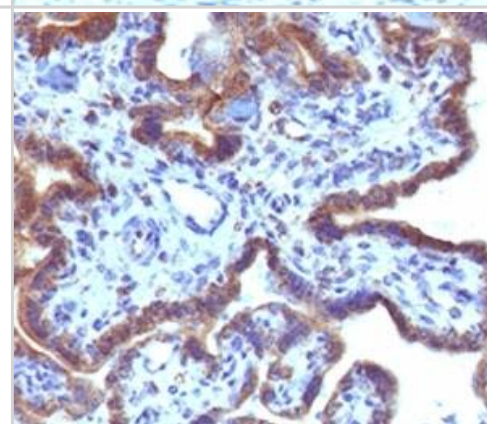
Immunohistochemistry: MAML3 Antibody (MMLP3-1) [NBP3-27931] - IHC testing of FFPE human colon carcinoma with MAML3 antibody (clone MMLP3-1).



Immunohistochemistry: MAML3 Antibody (MMLP3-1) [NBP3-27931] - IHC testing of FFPE human cervical carcinoma with MAML3 antibody (clone MMLP3-1).



Immunohistochemistry: MAML3 Antibody (MMLP3-1) [NBP3-27931] - IHC testing of FFPE human placenta with MAML3 antibody (clone MMLP3-1).





### **Novus Biologicals USA**

10730 E. Briarwood Avenue  
Centennial, CO 80112  
USA  
Phone: 303.730.1950  
Toll Free: 1.888.506.6887  
Fax: 303.730.1966  
nb-customerservice@bio-techne.com

### **Bio-Techne Canada**

21 Canmotor Ave  
Toronto, ON M8Z 4E6  
Canada  
Phone: 905.827.6400  
Toll Free: 855.668.8722  
Fax: 905.827.6402  
canada.inquires@bio-techne.com

### **Bio-Techne Ltd**

19 Barton Lane  
Abingdon Science Park  
Abingdon, OX14 3NB, United Kingdom  
Phone: (44) (0) 1235 529449  
Free Phone: 0800 37 34 15  
Fax: (44) (0) 1235 533420  
info.EMEA@bio-techne.com

### **General Contact Information**

www.novusbio.com  
Technical Support: nb-technical@bio-techne.com  
Orders: nb-customerservice@bio-techne.com  
General: novus@novusbio.com

### **Products Related to NBP3-27931**

---

HAF007	Goat anti-Mouse IgG Secondary Antibody [HRP]
NB7539	Goat anti-Mouse IgG (H+L) Secondary Antibody [HRP]
NBP1-97005-0.5mg	Mouse IgG1 Isotype Control (MG1)
NBP1-86674PEP	MAML3 Recombinant Protein Antigen

---

### **Limitations**

This product is for research use only and is not approved for use in humans or in clinical diagnosis. Primary Antibodies are guaranteed for 1 year from date of receipt.

For more information on our 100% guarantee, please visit [www.novusbio.com/guarantee](http://www.novusbio.com/guarantee)

Earn gift cards/discounts by submitting a review: [www.novusbio.com/reviews/submit/NBP3-27931](http://www.novusbio.com/reviews/submit/NBP3-27931)

Earn gift cards/discounts by submitting a publication using this product:  
[www.novusbio.com/publications](http://www.novusbio.com/publications)

