

# Product Datasheet

## Claudin-6 Antibody (9H8)

### NBP3-26651-100ul

Unit Size: 100 ul

Store at -20 to -70C. Avoid freeze-thaw cycles.

[www.novusbio.com](http://www.novusbio.com)



[technical@novusbio.com](mailto:technical@novusbio.com)

Protocols, Publications, Related Products, Reviews, Research Tools and Images at:  
[www.novusbio.com/NBP3-26651](http://www.novusbio.com/NBP3-26651)

Updated 1/7/2025 v.20.1

Earn rewards for product  
reviews and publications.

Submit a publication at [www.novusbio.com/publications](http://www.novusbio.com/publications)

Submit a review at [www.novusbio.com/reviews/destination/NBP3-26651](http://www.novusbio.com/reviews/destination/NBP3-26651)



**NBP3-26651-100ul**

Claudin-6 Antibody (9H8)

<b>Product Information</b>	
<b>Unit Size</b>	100 ul
<b>Concentration</b>	Please see the vial label for concentration. If unlisted please contact technical services.
<b>Storage</b>	Store at -20 to -70C. Avoid freeze-thaw cycles.
<b>Clonality</b>	Monoclonal
<b>Clone</b>	9H8
<b>Preservative</b>	0.03% Proclin 300
<b>Isotype</b>	IgG1
<b>Purity</b>	Affinity purified
<b>Buffer</b>	50% Glycerol, 0.01M PBS, PH 7.4
<b>Product Description</b>	
<b>Host</b>	Human
<b>Gene ID</b>	9074
<b>Gene Symbol</b>	CLDN6
<b>Species</b>	Human, Cynomolgus Monkey
<b>Immunogen</b>	Recombinant Human Claudin-6 protein [UniProt P56747]
<b>Product Application Details</b>	
<b>Applications</b>	ELISA, Flow Cytometry
<b>Recommended Dilutions</b>	Flow Cytometry, ELISA

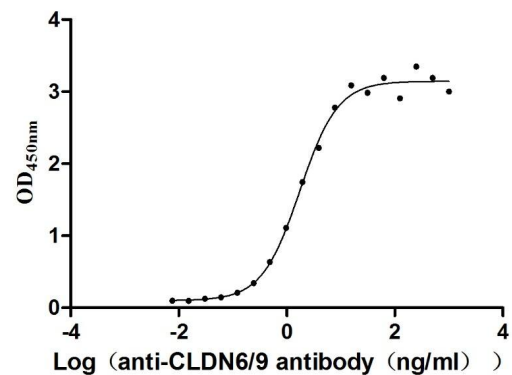


## Images

ELISA: Claudin-6 Antibody (9H8) [NBP3-26651] - The Binding Activity of Human Claudin-6 with Claudin-6 Antibody.

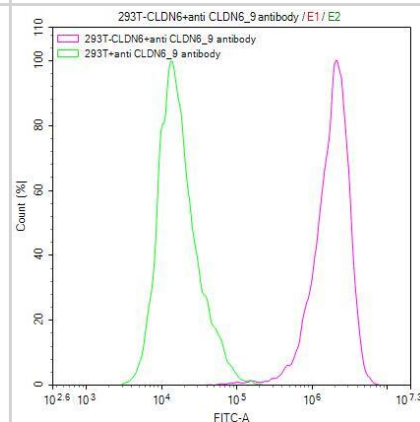
Activity: Measured by its binding ability in a functional ELISA.

Immobilized Human Claudin-6 at 10 ug/mL can bind Claudin-6 Antibody, the EC50 is 1.501-2.035 ng/mL.



Flow Cytometry: Claudin-6 Antibody (9H8) [NBP3-26651] -

Untransfected HEK293T cells (green line) and transfected Human CLDN6 HEK293T stable cells (red line) were stained with anti-CLDN6/9 recombinant antibody (2ug/1\*10<sup>6</sup> cells), washed and then followed by FITC-conjugated anti-Human IgG Fc antibody and analyzed with flow cytometry.





### **Novus Biologicals USA**

10730 E. Briarwood Avenue  
Centennial, CO 80112  
USA  
Phone: 303.730.1950  
Toll Free: 1.888.506.6887  
Fax: 303.730.1966  
nb-customerservice@bio-techne.com

### **Bio-Techne Canada**

21 Canmotor Ave  
Toronto, ON M8Z 4E6  
Canada  
Phone: 905.827.6400  
Toll Free: 855.668.8722  
Fax: 905.827.6402  
canada.inquires@bio-techne.com

### **Bio-Techne Ltd**

19 Barton Lane  
Abingdon Science Park  
Abingdon, OX14 3NB, United Kingdom  
Phone: (44) (0) 1235 529449  
Free Phone: 0800 37 34 15  
Fax: (44) (0) 1235 533420  
info.EMEA@bio-techne.com

### **General Contact Information**

www.novusbio.com  
Technical Support: nb-technical@bio-techne.com  
Orders: nb-customerservice@bio-techne.com  
General: novus@novusbio.com

### **Products Related to NBP3-26651-100ul**

---

G-102-C	Goat anti-Human IgG Secondary Antibody [Unconjugated]
NB7446	Goat anti-Human IgG Fc Secondary Antibody
DDXCH01P-100	Human IgG1 Isotype Control
NBL1-09248	Claudin-6 Overexpression Lysate

---

### **Limitations**

This product is for research use only and is not approved for use in humans or in clinical diagnosis. Primary Antibodies are guaranteed for 1 year from date of receipt.

For more information on our 100% guarantee, please visit [www.novusbio.com/guarantee](http://www.novusbio.com/guarantee)

Earn gift cards/discounts by submitting a review: [www.novusbio.com/reviews/submit/NBP3-26651](http://www.novusbio.com/reviews/submit/NBP3-26651)

Earn gift cards/discounts by submitting a publication using this product:  
[www.novusbio.com/publications](http://www.novusbio.com/publications)

