

Product Datasheet

IRE1 alpha [p Ser724] Antibody (1F12) NBP3-26425-100ul

Unit Size: 100 ul

Store at -20 to -70C. Avoid freeze-thaw cycles.

www.novusbio.com



technical@novusbio.com

Protocols, Publications, Related Products, Reviews, Research Tools and Images at:
www.novusbio.com/NBP3-26425

Updated 1/7/2025 v.20.1

Earn rewards for product
reviews and publications.

Submit a publication at www.novusbio.com/publications

Submit a review at www.novusbio.com/reviews/destination/NBP3-26425



NBP3-26425-100ul

IRE1 alpha [p Ser724] Antibody (1F12)

Product Information	
Unit Size	100 ul
Concentration	Please see the vial label for concentration. If unlisted please contact technical services.
Storage	Store at -20 to -70C. Avoid freeze-thaw cycles.
Clonality	Monoclonal
Clone	1F12
Preservative	0.02% Sodium Azide
Isotype	IgG
Purity	Affinity purified
Buffer	PBS, pH 7.4, 150mM NaCl, and 50% glycerol

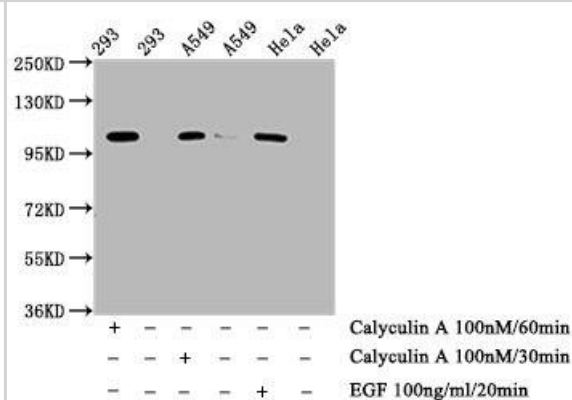
Product Description	
Host	Rabbit
Gene ID	2081
Gene Symbol	ERN1
Species	Human
Immunogen	A synthesized peptide derived from Human IRE1 alpha [p Ser724] [UniProt O75460]

Product Application Details	
Applications	Western Blot, ELISA, Immunocytochemistry/ Immunofluorescence
Recommended Dilutions	Western Blot 1:500-1:5000, ELISA, Immunocytochemistry/ Immunofluorescence 1:20-1:200

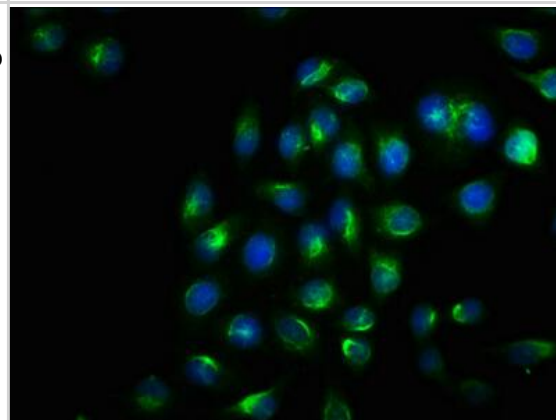


Images

Western Blot: IRE1 alpha [p Ser724] Antibody (1F12) [NBP3-26425] - Positive Western Blot detected in: 293 whole cell lysate, A549 whole cell lysate, HeLa whole cell lysate (treated with Calyculin A or EGF).
 All lanes: IRE1 alpha [p Ser724] at 0.75 ug/ml.
 Secondary: Goat polyclonal to rabbit IgG at 1/50000 dilution.
 Predicted band size: 110 kDa
 Observed band size: 110 kDa



Immunocytochemistry/Immunofluorescence: IRE1 alpha [p Ser724] Antibody (1F12) [NBP3-26425] - Staining of HeLa cells with IRE1 alpha [p Ser724] Antibody (1F12) at 1:100, counter-stained with DAPI. The cells were fixed in 4% formaldehyde, permeabilized using 0.2% Triton X-100 and blocked in 10% normal Goat Serum. The cells were then incubated with the antibody overnight at 4C. The secondary antibody was Alexa Fluor 488-conjugated Goat Anti-Rabbit IgG (H+L).





Novus Biologicals USA

10730 E. Briarwood Avenue
Centennial, CO 80112
USA
Phone: 303.730.1950
Toll Free: 1.888.506.6887
Fax: 303.730.1966
nb-customerservice@bio-techne.com

Bio-Techne Canada

21 Canmotor Ave
Toronto, ON M8Z 4E6
Canada
Phone: 905.827.6400
Toll Free: 855.668.8722
Fax: 905.827.6402
canada.inquires@bio-techne.com

Bio-Techne Ltd

19 Barton Lane
Abingdon Science Park
Abingdon, OX14 3NB, United Kingdom
Phone: (44) (0) 1235 529449
Free Phone: 0800 37 34 15
Fax: (44) (0) 1235 533420
info.EMEA@bio-techne.com

General Contact Information

www.novusbio.com
Technical Support: nb-technical@bio-techne.com
Orders: nb-customerservice@bio-techne.com
General: novus@novusbio.com

Products Related to NBP3-26425-100ul

HAF008	Goat anti-Rabbit IgG Secondary Antibody [HRP]
NB7160	Goat anti-Rabbit IgG (H+L) Secondary Antibody [HRP]
NBP2-24891	Rabbit IgG Isotype Control
NB100-2323PEP	IRE1 alpha [p Ser724] Antibody Blocking Peptide

Limitations

This product is for research use only and is not approved for use in humans or in clinical diagnosis. Primary Antibodies are guaranteed for 1 year from date of receipt.

For more information on our 100% guarantee, please visit www.novusbio.com/guarantee

Earn gift cards/discounts by submitting a review: www.novusbio.com/reviews/submit/NBP3-26425

Earn gift cards/discounts by submitting a publication using this product:
www.novusbio.com/publications

