

Product Datasheet

SUMO Activating Enzyme E1 (SAE1) Antibody (9D8) NBP3-26336-100ul

Unit Size: 100 ul

Store at -20 to -70C. Avoid freeze-thaw cycles.

www.novusbio.com



technical@novusbio.com

Protocols, Publications, Related Products, Reviews, Research Tools and Images at:
www.novusbio.com/NBP3-26336

Updated 1/7/2025 v.20.1

Earn rewards for product
reviews and publications.

Submit a publication at www.novusbio.com/publications

Submit a review at www.novusbio.com/reviews/destination/NBP3-26336



NBP3-26336-100ul**SUMO Activating Enzyme E1 (SAE1) Antibody (9D8)**

| Product Information | |
|------------------------------------|---|
| Unit Size | 100 ul |
| Concentration | Please see the vial label for concentration. If unlisted please contact technical services. |
| Storage | Store at -20 to -70C. Avoid freeze-thaw cycles. |
| Clonality | Monoclonal |
| Clone | 9D8 |
| Preservative | 0.02% Sodium Azide |
| Isotype | IgG |
| Purity | Affinity purified |
| Buffer | PBS, pH 7.4, 150mM NaCl, and 50% glycerol |
| Product Description | |
| Host | Rabbit |
| Gene ID | 10055 |
| Gene Symbol | SAE1 |
| Species | Human |
| Immunogen | A synthesized peptide derived from Human SUMO Activating Enzyme E1 (SAE1) [UniProt Q9UBE0] |
| Product Application Details | |
| Applications | Western Blot, ELISA, Immunocytochemistry/ Immunofluorescence |
| Recommended Dilutions | Western Blot 1:500-1:5000, ELISA, Immunocytochemistry/ Immunofluorescence 1:20-1:200 |



Images

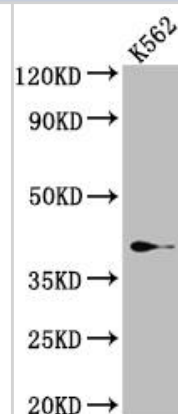
Western Blot: SUMO Activating Enzyme E1 (SAE1) Antibody (9D8) [NBP3-26336] - Positive Western Blot detected in: K562 whole cell lysate.

All lanes: SAE1 Antibody at 1: 1000

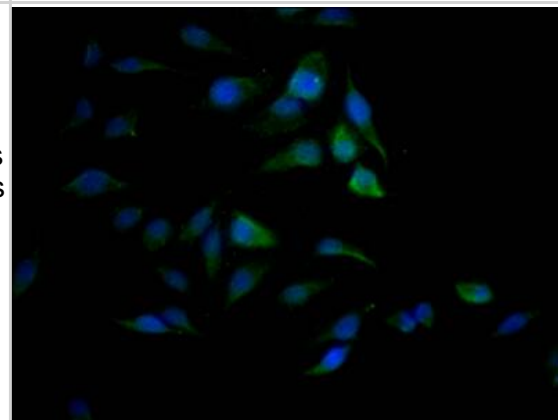
Secondary: Goat polyclonal to rabbit IgG at 1/50000 dilution.

Predicted band size: 39, 30, 34 kDa

Observed band size: 39 kDa



Immunocytochemistry/Immunofluorescence: SUMO Activating Enzyme E1 (SAE1) Antibody (9D8) [NBP3-26336] - Staining of Hela Cells with SUMO Activating Enzyme E1 (SAE1) Antibody (9D8) at 1:50, counter-stained with DAPI. The cells were fixed in 4% formaldehyde, permeated by 0.2% Triton X-100, and blocked in 10% normal Goat Serum. The cells were then incubated with the antibody overnight at 4C. Nuclear DNA was labeled in blue with DAPI. The secondary antibody was FITC-conjugated Goat Anti-Rabbit IgG (H+L).





Novus Biologicals USA

10730 E. Briarwood Avenue
Centennial, CO 80112
USA
Phone: 303.730.1950
Toll Free: 1.888.506.6887
Fax: 303.730.1966
nb-customerservice@bio-techne.com

Bio-Techne Canada

21 Canmotor Ave
Toronto, ON M8Z 4E6
Canada
Phone: 905.827.6400
Toll Free: 855.668.8722
Fax: 905.827.6402
canada.inquires@bio-techne.com

Bio-Techne Ltd

19 Barton Lane
Abingdon Science Park
Abingdon, OX14 3NB, United Kingdom
Phone: (44) (0) 1235 529449
Free Phone: 0800 37 34 15
Fax: (44) (0) 1235 533420
info.EMEA@bio-techne.com

General Contact Information

www.novusbio.com
Technical Support: nb-technical@bio-techne.com
Orders: nb-customerservice@bio-techne.com
General: novus@novusbio.com

Products Related to NBP3-26336-100ul

| | |
|---------------|--|
| HAF008 | Goat anti-Rabbit IgG Secondary Antibody [HRP] |
| NB7160 | Goat anti-Rabbit IgG (H+L) Secondary Antibody [HRP] |
| NBP2-24891 | Rabbit IgG Isotype Control |
| NBP2-13273PEP | SUMO Activating Enzyme E1 (SAE1) Recombinant Protein Antigen |

Limitations

This product is for research use only and is not approved for use in humans or in clinical diagnosis. Primary Antibodies are guaranteed for 1 year from date of receipt.

For more information on our 100% guarantee, please visit www.novusbio.com/guarantee

Earn gift cards/discounts by submitting a review: www.novusbio.com/reviews/submit/NBP3-26336

Earn gift cards/discounts by submitting a publication using this product:
www.novusbio.com/publications

