

Product Datasheet

KLF4 Antibody (3A1)

NBP3-26180-100ul

Unit Size: 100 ul

Store at -20 to -70C. Avoid freeze-thaw cycles.

www.novusbio.com



technical@novusbio.com

Protocols, Publications, Related Products, Reviews, Research Tools and Images at:
www.novusbio.com/NBP3-26180

Updated 1/7/2025 v.20.1

Earn rewards for product reviews and publications.

Submit a publication at www.novusbio.com/publications

Submit a review at www.novusbio.com/reviews/destination/NBP3-26180



NBP3-26180-100ul**KLF4 Antibody (3A1)**

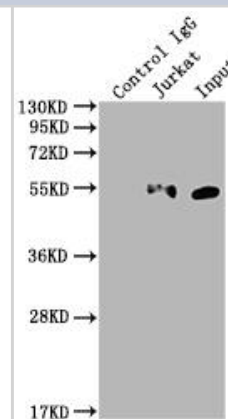
Product Information	
Unit Size	100 ul
Concentration	Please see the vial label for concentration. If unlisted please contact technical services.
Storage	Store at -20 to -70C. Avoid freeze-thaw cycles.
Clonality	Monoclonal
Clone	3A1
Preservative	0.02% Sodium Azide
Isotype	IgG
Purity	Affinity purified
Buffer	PBS, pH 7.4, 150mM NaCl, and 50% glycerol

Product Description	
Host	Rabbit
Gene ID	9314
Gene Symbol	KLF4
Species	Human
Immunogen	A synthesized peptide derived from Human KLF4 [UniProt O43474]

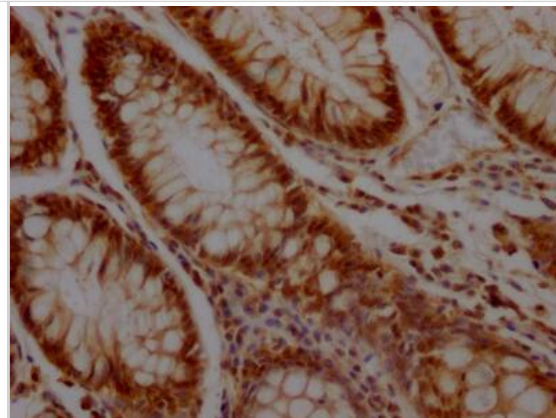
Product Application Details	
Applications	Western Blot, ELISA, Immunocytochemistry/ Immunofluorescence, Immunohistochemistry, Immunoprecipitation
Recommended Dilutions	Western Blot 1:500-1:5000, ELISA, Immunohistochemistry 1:50-1:200, Immunocytochemistry/ Immunofluorescence 1:20-1:200, Immunoprecipitation 1:200-1:1000

Images

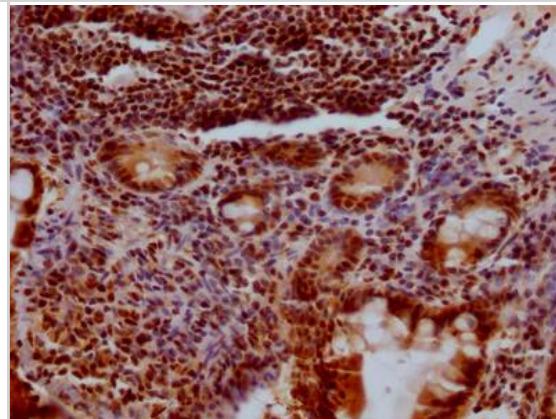
Immunoprecipitation: KLF4 Antibody (3A1) [NBP3-26180] - Immunoprecipitating KLF4 in Hela whole cell lysate.
 Lane 1: Rabbit control IgG instead of NBP3-26180 in Hela whole cell lysate. For western blotting, a HRP-conjugated Protein G antibody was used as the secondary antibody (1/2000).
 Lane 2: NBP3-26180 (2ug) + Hela whole cell lysate (500ug).
 Lane 3: Hela whole cell lysate (10ug).



Immunohistochemistry: KLF4 Antibody (3A1) [NBP3-26180] - Image of KLF4 Antibody (3A1) diluted at 1:100 and staining in paraffin-embedded human small intestine tissue performed. After dewaxing and hydration, antigen retrieval was mediated by high pressure in a citrate buffer (pH 6.0). Section was blocked with 10% normal goat serum 30min at RT. Then primary antibody (1% BSA) was incubated at 4C overnight. The primary is detected by a Goat anti-rabbit IgG polymer labeled by HRP and visualized using 0.05% DAB.



Immunohistochemistry: KLF4 Antibody (3A1) [NBP3-26180] - Image of KLF4 Antibody (3A1) diluted at 1:100 and staining in paraffin-embedded human small intestine tissue performed. After dewaxing and hydration, antigen retrieval was mediated by high pressure in a citrate buffer (pH 6.0). Section was blocked with 10% normal goat serum 30min at RT. Then primary antibody (1% BSA) was incubated at 4C overnight. The primary is detected by a Goat anti-rabbit IgG polymer labeled by HRP and visualized using 0.05% DAB.



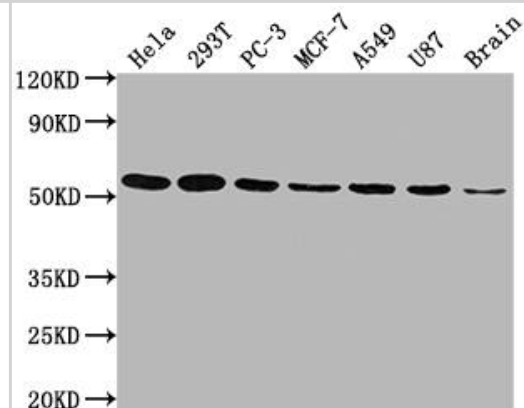
Western Blot: KLF4 Antibody (3A1) [NBP3-26180] - Positive Western Blot detected in: HeLa whole cell lysate, 293T whole cell lysate, PC-3 whole cell lysate, MCF-7 whole cell lysate, A549 whole cell lysate, U87 whole cell lysate, Brain tissue.

All lanes: KLF4 Antibody at 1: 1500

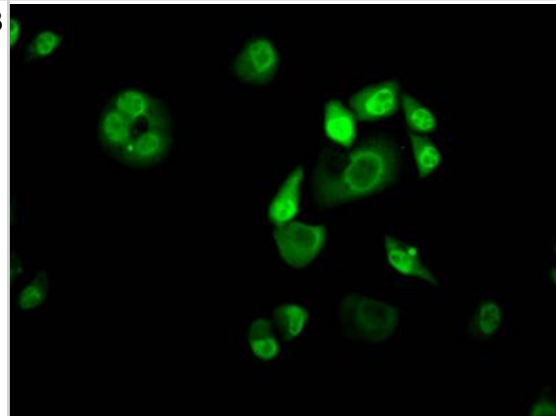
Secondary: Goat polyclonal to rabbit IgG at 1/50000 dilution.

Predicted band size: 55, 52, 46, 13, 7 kDa

Observed band size: 55 kDa



Immunocytochemistry/Immunofluorescence: KLF4 Antibody (3A1) [NBP3-26180] - Staining of HeLa Cells with KLF4 Antibody (3A1) at 1:50, counter-stained with DAPI. The cells were fixed in 4% formaldehyde, permeated by 0.2% Triton X-100, and blocked in 10% normal Goat Serum. The cells were then incubated with the antibody overnight at 4C. Nuclear DNA was labeled in blue with DAPI. The secondary antibody was FITC-conjugated Goat Anti-Rabbit IgG (H+L).





Novus Biologicals USA

10730 E. Briarwood Avenue
Centennial, CO 80112
USA
Phone: 303.730.1950
Toll Free: 1.888.506.6887
Fax: 303.730.1966
nb-customerservice@bio-techne.com

Bio-Techne Canada

21 Canmotor Ave
Toronto, ON M8Z 4E6
Canada
Phone: 905.827.6400
Toll Free: 855.668.8722
Fax: 905.827.6402
canada.inquires@bio-techne.com

Bio-Techne Ltd

19 Barton Lane
Abingdon Science Park
Abingdon, OX14 3NB, United Kingdom
Phone: (44) (0) 1235 529449
Free Phone: 0800 37 34 15
Fax: (44) (0) 1235 533420
info.EMEA@bio-techne.com

General Contact Information

www.novusbio.com
Technical Support: nb-technical@bio-techne.com
Orders: nb-customerservice@bio-techne.com
General: novus@novusbio.com

Products Related to NBP3-26180-100ul

HAF008	Goat anti-Rabbit IgG Secondary Antibody [HRP]
NB7160	Goat anti-Rabbit IgG (H+L) Secondary Antibody [HRP]
NBP2-24891	Rabbit IgG Isotype Control
NBP1-72390-50ug	Recombinant Human KLF4 His-Cam Protein

Limitations

This product is for research use only and is not approved for use in humans or in clinical diagnosis. Primary Antibodies are guaranteed for 1 year from date of receipt.

For more information on our 100% guarantee, please visit www.novusbio.com/guarantee

Earn gift cards/discounts by submitting a review: www.novusbio.com/reviews/submit/NBP3-26180

Earn gift cards/discounts by submitting a publication using this product:
www.novusbio.com/publications

