

Product Datasheet

IgG Heavy Chain Antibody (RM116) - Azide and BSA Free NBP3-25964

Unit Size: 100 ug

Store at -20C. Avoid freeze-thaw cycles.

www.novusbio.com



technical@novusbio.com

Protocols, Publications, Related Products, Reviews, Research Tools and Images at:
www.novusbio.com/NBP3-25964

Updated 9/9/2025 v.20.1

**Earn rewards for product
reviews and publications.**

Submit a publication at www.novusbio.com/publications

Submit a review at www.novusbio.com/reviews/destination/NBP3-25964



NBP3-25964

IgG Heavy Chain Antibody (RM116) - Azide and BSA Free

Product Information

Unit Size	100 ug
Concentration	1 mg/ml
Storage	Store at -20C. Avoid freeze-thaw cycles.
Clonality	Monoclonal
Clone	RM116
Preservative	No Preservative
Isotype	IgG
Purity	Protein A purified
Buffer	PBS

Product Description

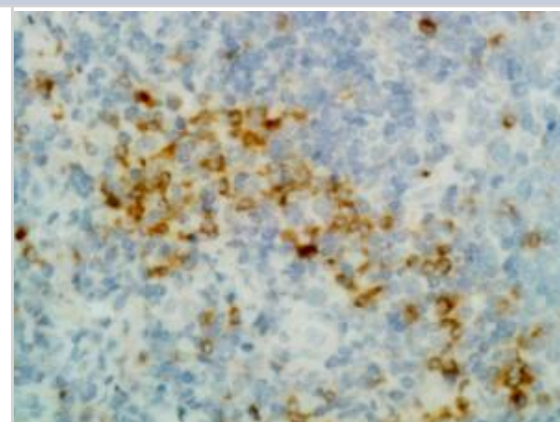
Description	Novus Biologicals Rabbit IgG Heavy Chain Antibody (RM116) - Azide and BSA Free (NBP2-62019) is a recombinant monoclonal antibody validated for use in IHC, ELISA and ICC/IF. All Novus Biologicals antibodies are covered by our 100% guarantee.
Host	Rabbit
Species	Human
Specificity/Sensitivity	This antibody reacts to the Fc region of all gamma heavy chains of human immunoglobulins, including gamma 1, gamma 2, gamma 3, and gamma 4. No cross reactivity with other human heavy chains, mouse IgG, rat IgG or goat IgG
Immunogen	Human IgG

Product Application Details

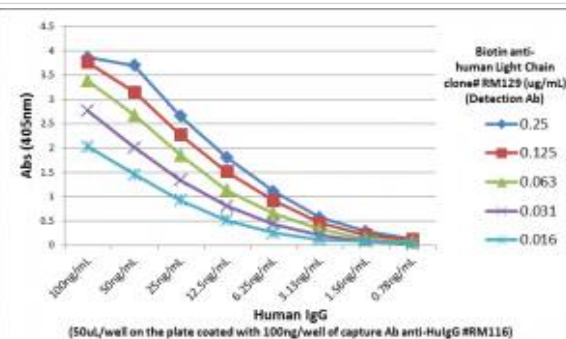
Applications	ELISA, Immunocytochemistry/ Immunofluorescence, Immunohistochemistry, Sandwich ELISA Capture, Sandwich ELISA Detection
Recommended Dilutions	ELISA, Immunohistochemistry 0.5ug/ml - 2ug/ml, Immunocytochemistry/ Immunofluorescence 0.5 - 2ug/ml, Sandwich ELISA Capture 50 - 200ng/well, Sandwich ELISA Detection 0.05 - 0.2ug/ml

Images

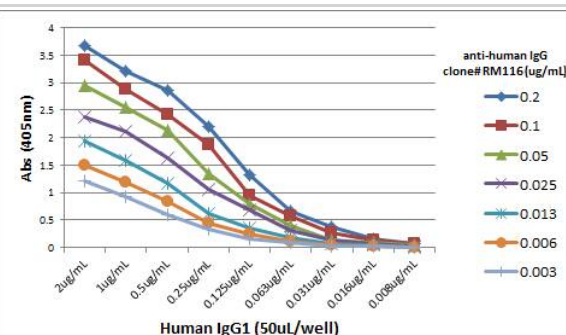
Immunohistochemistry-Paraffin: IgG Heavy Chain Antibody (RM116) - Azide and BSA Free [NBP3-25964] - Immunohistochemistry of Human Tonsil using Clone RM116.



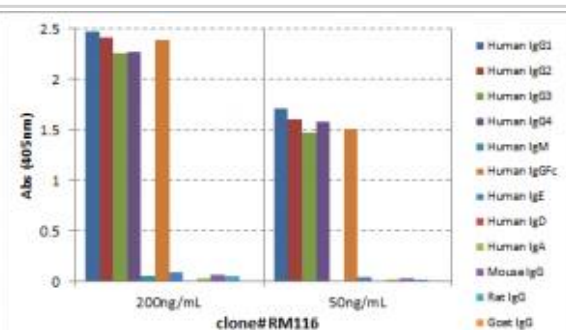
Sandwich ELISA: IgG Heavy Chain Antibody (RM116) - Azide and BSA Free [NBP3-25964] - Sandwich ELISA using Clone RM116 as the capture antibody (100ng/well), and NBP3-18532 as the detection antibody (1ug/mL), followed by an alkaline phosphatase conjugated streptavidin.



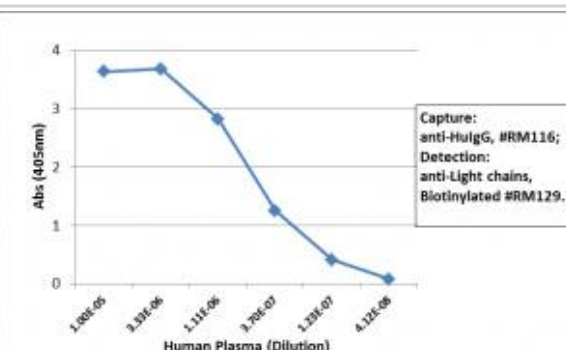
ELISA: IgG Heavy Chain Antibody (RM116) - Azide and BSA Free [NBP3-25964] - A titer ELISA using RM116. The plate was coated with different amounts of human IgG1. A serial dilution of RM116 was used as the primary antibody. An alkaline phosphatase conjugated anti-rabbit IgG as the secondary antibody.



ELISA: IgG Heavy Chain Antibody (RM116) - Azide and BSA Free [NBP3-25964] - ELISA of human immunoglobulins shows RM116 reacts to the gamma 1, gamma 2, gamma 3, gamma 4 heavy chains of human IgGs, and the Fc of human IgG. No cross reactivity with other human heavy chains, mouse IgG, rat IgG, or goat IgG. The plate was coated with 50 ng/well of different immunoglobulins. 200 ng/mL or 50 ng/mL of RM116 was used as the primary antibody. An alkaline phosphatase conjugated anti-rabbit IgG as the secondary antibody.



Sandwich ELISA: IgG Heavy Chain Antibody (RM116) - Azide and BSA Free [NBP3-25964] - Sandwich ELISA using Clone RM116 as the capture antibody (100ng/well), and NBP3-18532 as the detection antibody (1ug/mL), followed by an alkaline phosphatase conjugated streptavidin.





Novus Biologicals USA

10730 E. Briarwood Avenue
Centennial, CO 80112
USA
Phone: 303.730.1950
Toll Free: 1.888.506.6887
Fax: 303.730.1966
nb-customerservice@bio-techne.com

Bio-Techne Canada

21 Canmotor Ave
Toronto, ON M8Z 4E6
Canada
Phone: 905.827.6400
Toll Free: 855.668.8722
Fax: 905.827.6402
canada.inquires@bio-techne.com

Bio-Techne Ltd

19 Barton Lane
Abingdon Science Park
Abingdon, OX14 3NB, United Kingdom
Phone: (44) (0) 1235 529449
Free Phone: 0800 37 34 15
Fax: (44) (0) 1235 533420
info.EMEA@bio-techne.com

General Contact Information

www.novusbio.com
Technical Support: nb-technical@bio-techne.com
Orders: nb-customerservice@bio-techne.com
General: novus@novusbio.com

Products Related to NBP3-25964

HAF008	Goat anti-Rabbit IgG Secondary Antibody [HRP]
NB7160	Goat anti-Rabbit IgG (H+L) Secondary Antibody [HRP]
NBP2-24891	Rabbit IgG Isotype Control
NB790	Sheep anti-Bovine IgG Heavy Chain Secondary Antibody

Limitations

This product is for research use only and is not approved for use in humans or in clinical diagnosis. Primary Antibodies are guaranteed for 1 year from date of receipt.

For more information on our 100% guarantee, please visit www.novusbio.com/guarantee

Earn gift cards/discounts by submitting a review: www.novusbio.com/reviews/submit/NBP3-25964

Earn gift cards/discounts by submitting a publication using this product:
www.novusbio.com/publications

