

Product Datasheet

Glucose Uptake Assay Kit (Fluorometric) NBP3-25776

Unit Size: 1 Kit

Storage of components varies. See protocol for specific instructions.

www.novusbio.com



technical@novusbio.com

Protocols, Publications, Related Products, Reviews, Research Tools and Images at:
www.novusbio.com/NBP3-25776

Updated 1/3/2024 v.20.1

Earn rewards for product
reviews and publications.

Submit a publication at www.novusbio.com/publications

Submit a review at www.novusbio.com/reviews/destination/NBP3-25776

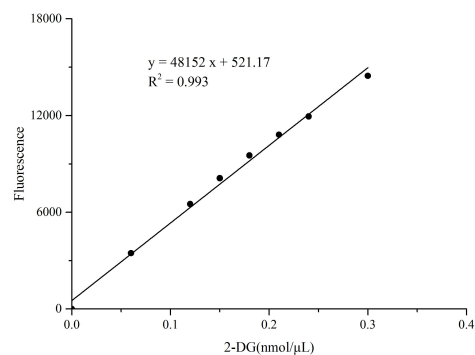


NBP3-25776**Glucose Uptake Assay Kit (Fluorometric)**

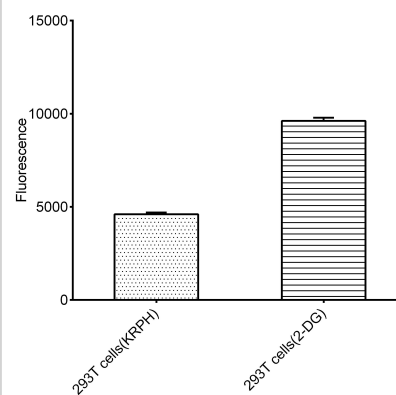
Product Information	
Unit Size	1 Kit
Concentration	Concentration is not relevant for this product. Please see the protocols for proper use of this product.
Storage	Storage of components varies. See protocol for specific instructions.
Product Description	
Description	<p>Detection principle: 2-DG is up-taken by the cells, converted to 2-DG-6P, which is catalyzed by glucose dehydrogenase to produce 6PDG. Meanwhile, NADP⁺ is converted to NADPH. The generated NADPH converts the probe into fluorescent substances under the action of myocardial yellow transferase. The glucose uptake can be calculated by measuring the fluorescence intensity at the excitation wavelength of 530 nm and the emission wavelength of 590 nm.</p> <p>Detection method: Fluorescence method</p> <p>Other instruments required: Micropipettor, Incubator, Water bath</p> <p>Other reagents required: KRPH solution (20 mM Hepes, 5 mM KH₂PO₄, 1 mM MgSO₄, 1 mM CaCl₂, 136 mM NaCl, 4.7 mM KCl, 2% BSA, pH 7.4)</p>
Kit Components	Acid Reagent, Alkali Reagent, 0.3 nmol/uL Standard, KRPH Buffer Solution, Black Microplate, Plate Sealer
Standard Curve Range	0.02-0.3 nmol/ul
Sensitivity	0.02 nmol/ul
Assay Type	Quantitative
Suitable Sample Type	Cells

Images

Glucose Uptake Assay Kit (Fluorometric) [NBP3-25776] - Standard Curve Reference



Glucose Uptake Assay Kit (Fluorometric) [NBP3-25776] - Assay Example





Novus Biologicals USA

10730 E. Briarwood Avenue
Centennial, CO 80112
USA
Phone: 303.730.1950
Toll Free: 1.888.506.6887
Fax: 303.730.1966
nb-customerservice@bio-techne.com

Bio-Techne Canada

21 Canmotor Ave
Toronto, ON M8Z 4E6
Canada
Phone: 905.827.6400
Toll Free: 855.668.8722
Fax: 905.827.6402
canada.inquires@bio-techne.com

Bio-Techne Ltd

19 Barton Lane
Abingdon Science Park
Abingdon, OX14 3NB, United Kingdom
Phone: (44) (0) 1235 529449
Free Phone: 0800 37 34 15
Fax: (44) (0) 1235 533420
info.EMEA@bio-techne.com

General Contact Information

www.novusbio.com
Technical Support: nb-technical@bio-
techne.com
Orders: nb-customerservice@bio-techne.com
General: novus@novusbio.com

Limitations

This product is for research use only and is not approved for use in humans or in clinical diagnosis. Kits are guaranteed for 6 months from date of receipt.

For more information on our 100% guarantee, please visit www.novusbio.com/guarantee

Earn gift cards/discounts by submitting a review: www.novusbio.com/reviews/submit/NBP3-25776

Earn gift cards/discounts by submitting a publication using this product:
www.novusbio.com/publications

