

Product Datasheet

SLC1A5 Antibody (HL1988) - Azide and BSA Free NBP3-25686

Unit Size: 100 ul

Store at 4C short term. Aliquot and store at -20C long term. Avoid freeze-thaw cycles.

www.novusbio.com



technical@novusbio.com

Protocols, Publications, Related Products, Reviews, Research Tools and Images at:
www.novusbio.com/NBP3-25686

Updated 9/9/2025 v.20.1

Earn rewards for product
reviews and publications.

Submit a publication at www.novusbio.com/publications

Submit a review at www.novusbio.com/reviews/destination/NBP3-25686



NBP3-25686

SLC1A5 Antibody (HL1988) - Azide and BSA Free

Product Information

Unit Size	100 ul
Concentration	Concentrations vary lot to lot. See vial label for concentration. If unlisted please contact technical services.
Storage	Store at 4C short term. Aliquot and store at -20C long term. Avoid freeze-thaw cycles.
Clonality	Monoclonal
Clone	HL1988
Preservative	No Preservative
Isotype	IgG
Purity	Protein A purified
Buffer	PBS
Target Molecular Weight	57 kDa

Product Description

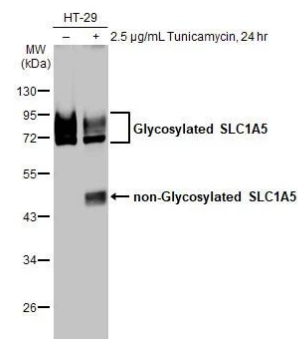
Description	Novus Biologicals Rabbit SLC1A5 Antibody (HL1988) - Azide and BSA Free (NBP3-25686) is a recombinant monoclonal antibody validated for use in IHC, WB and ICC/IF. All Novus Biologicals antibodies are covered by our 100% guarantee.
Host	Rabbit
Gene ID	6510
Gene Symbol	SLC1A5
Species	Human, Mouse, Feline
Immunogen	Recombinant protein encompassing a sequence within the C-terminus region of human SLC1A5. The exact sequence is proprietary.

Product Application Details

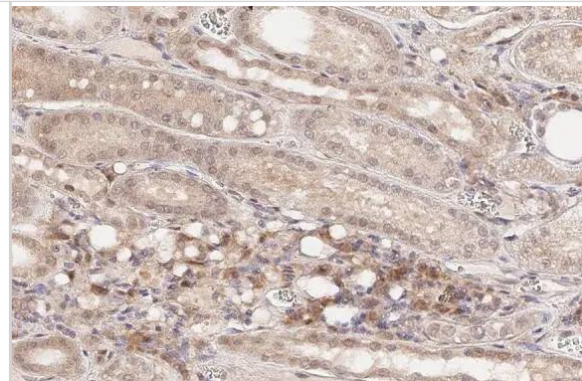
Applications	Western Blot, Immunohistochemistry-Paraffin, Immunocytochemistry/Immunofluorescence, Immunohistochemistry
Recommended Dilutions	Western Blot 1:500-1:3000, Immunohistochemistry Assay dependent, Immunocytochemistry/ Immunofluorescence Assay dependent, Immunohistochemistry-Paraffin Assay dependent

Images

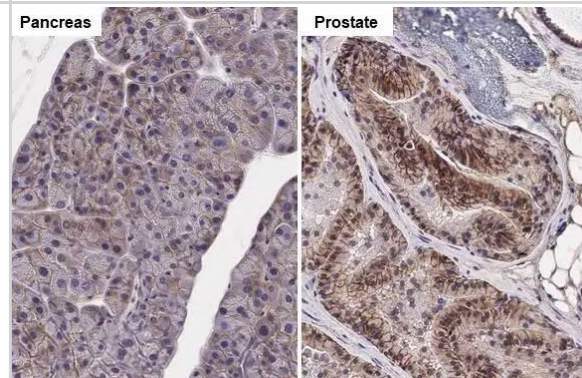
Western Blot: SLC1A5 Antibody (HL1988) - Azide and BSA Free [NBP3-25686] - Untreated (-) and treated (+) HT-29 whole cell extract (30 ug) were separated by 10% SDS-PAGE, and the membrane was blotted with SLC1A5 antibody [HL1988] (NBP3-25686) diluted at 1:2000. The HRP-conjugated anti-rabbit IgG antibody was used to detect the primary antibody.



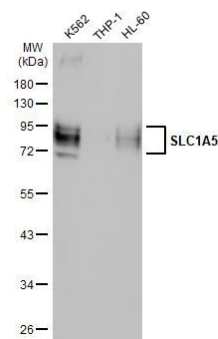
Immunohistochemistry-Paraffin: SLC1A5 Antibody (HL1988) - Azide and BSA Free [NBP3-25686] - SLC1A5 antibody [HL1988] detects SLC1A5 protein at cell membrane and cytoplasm by immunohistochemical analysis. Sample: Paraffin-embedded cat kidney. SLC1A5 stained by SLC1A5 antibody [HL1988] (NBP3-25686) diluted at 1:100. Antigen Retrieval: Citrate buffer, pH 6.0, 15 min



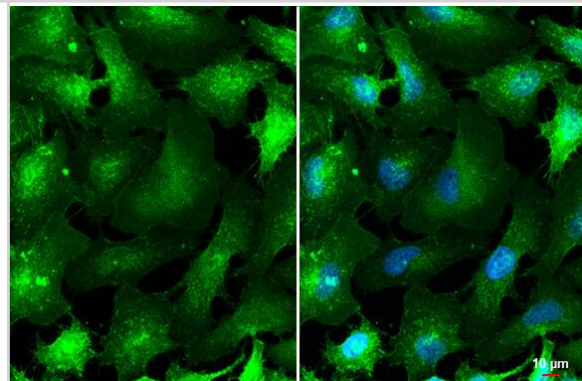
Immunohistochemistry-Paraffin: SLC1A5 Antibody (HL1988) - Azide and BSA Free [NBP3-25686] - SLC1A5 antibody [HL1988] detects SLC1A5 protein at cell membrane by immunohistochemical analysis. Sample: Paraffin-embedded mouse tissues. SLC1A5 stained by SLC1A5 antibody [HL1988] (NBP3-25686) diluted at 1:100. Antigen Retrieval: Citrate buffer, pH 6.0, 15 min



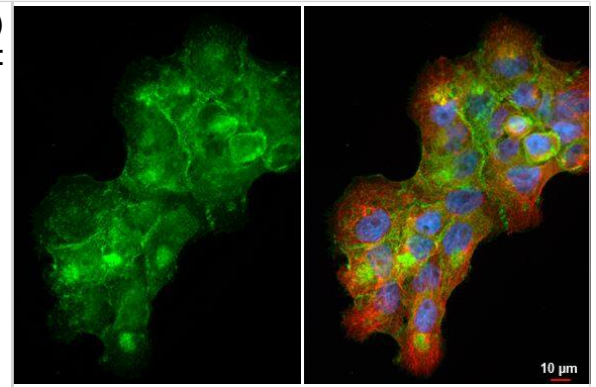
Western Blot: SLC1A5 Antibody (HL1988) - Azide and BSA Free [NBP3-25686] - Various whole cell extracts (30 ug) were separated by 10% SDS-PAGE, and the membrane was blotted with SLC1A5 antibody [HL1988] (NBP3-25686) diluted at 1:2000. The HRP-conjugated anti-rabbit IgG antibody was used to detect the primary antibody.



Immunocytochemistry/Immunofluorescence: SLC1A5 Antibody (HL1988) - Azide and BSA Free [NBP3-25686] - SLC1A5 antibody [HL1988] detects SLC1A5 protein at cell membrane by immunofluorescent analysis. Sample: HeLa cells were fixed in 4% paraformaldehyde at RT for 15 min. Green: SLC1A5 stained by SLC1A5 antibody [HL1988] (NBP3-25686) diluted at 1:500. Blue: Fluoroshield with DAPI .



Immunocytochemistry/Immunofluorescence: SLC1A5 Antibody (HL1988)
- A431 cells were fixed in 4% paraformaldehyde at RT for 15 min. Green: SLC1A5 stained by SLC1A5 antibody [HL1988] diluted at 1:500. Red: alpha Tubulin, a cytoskeleton marker, stained by alpha Tubulin antibody [114] (GTX628802) diluted at 1:1000. Blue: Fluoroshield with DAPI.





Novus Biologicals USA

10730 E. Briarwood Avenue
Centennial, CO 80112
USA
Phone: 303.730.1950
Toll Free: 1.888.506.6887
Fax: 303.730.1966
nb-customerservice@bio-techne.com

Bio-Techne Canada

21 Canmotor Ave
Toronto, ON M8Z 4E6
Canada
Phone: 905.827.6400
Toll Free: 855.668.8722
Fax: 905.827.6402
canada.inquires@bio-techne.com

Bio-Techne Ltd

19 Barton Lane
Abingdon Science Park
Abingdon, OX14 3NB, United Kingdom
Phone: (44) (0) 1235 529449
Free Phone: 0800 37 34 15
Fax: (44) (0) 1235 533420
info.EMEA@bio-techne.com

General Contact Information

www.novusbio.com
Technical Support: nb-technical@bio-techne.com
Orders: nb-customerservice@bio-techne.com
General: novus@novusbio.com

Products Related to NBP3-25686

HAF008	Goat anti-Rabbit IgG Secondary Antibody [HRP]
NB7160	Goat anti-Rabbit IgG (H+L) Secondary Antibody [HRP]
NBP2-24891	Rabbit IgG Isotype Control
NBP1-89327PEP	SLC1A5 Recombinant Protein Antigen

Limitations

This product is for research use only and is not approved for use in humans or in clinical diagnosis. Primary Antibodies are guaranteed for 1 year from date of receipt.

For more information on our 100% guarantee, please visit www.novusbio.com/guarantee

Earn gift cards/discounts by submitting a review: www.novusbio.com/reviews/submit/NBP3-25686

Earn gift cards/discounts by submitting a publication using this product:
www.novusbio.com/publications

