

Product Datasheet

Respiratory Syncytial Virus Nucleoprotein Antibody (HL1248) - Azide and BSA Free NBP3-25628

Unit Size: 100 ul

Store at 4C short term. Aliquot and store at -20C long term. Avoid freeze-thaw cycles.

www.novusbio.com



technical@novusbio.com

Protocols, Publications, Related Products, Reviews, Research Tools and Images at:
www.novusbio.com/NBP3-25628

Updated 9/9/2025 v.20.1

Earn rewards for product
reviews and publications.

Submit a publication at www.novusbio.com/publications

Submit a review at www.novusbio.com/reviews/destination/NBP3-25628



NBP3-25628**Respiratory Syncytial Virus Nucleoprotein Antibody (HL1248) - Azide and BSA Free**

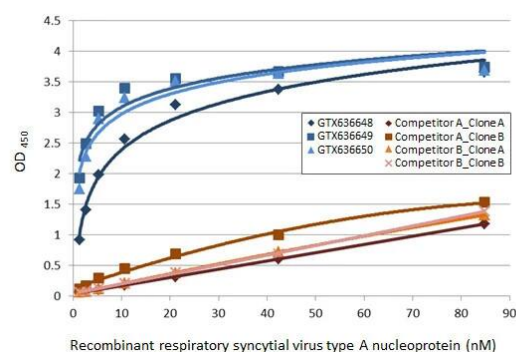
Product Information	
Unit Size	100 ul
Concentration	Concentrations vary lot to lot. See vial label for concentration. If unlisted please contact technical services.
Storage	Store at 4C short term. Aliquot and store at -20C long term. Avoid freeze-thaw cycles.
Clonality	Monoclonal
Clone	HL1248
Preservative	No Preservative
Isotype	IgG
Purity	Protein A purified
Buffer	PBS

Product Description	
Description	Novus Biologicals Rabbit Respiratory Syncytial Virus Nucleoprotein Antibody (HL1248) - Azide and BSA Free (NBP3-25628) is a recombinant monoclonal antibody validated for use in WB, ELISA, ICC/IF and IP. All Novus Biologicals antibodies are covered by our 100% guarantee.
Host	Rabbit
Species	Virus
Reactivity Notes	Respiratory Syncytial Virus
Immunogen	Recombinant protein encompassing a sequence within the C-terminus region of Respiratory Syncytial Virus Nucleoprotein. The exact sequence is proprietary.

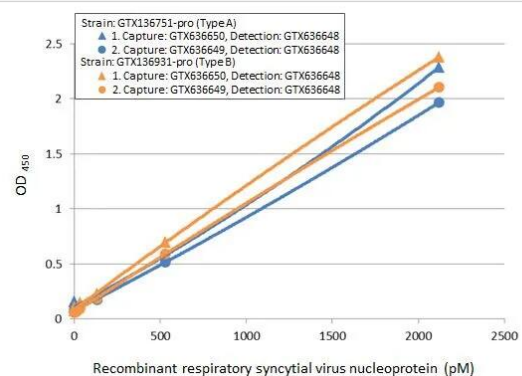
Product Application Details	
Applications	Western Blot, ELISA, Immunocytochemistry/ Immunofluorescence, Immunoprecipitation, Sandwich ELISA, Lateral Flow Assay
Recommended Dilutions	Western Blot 1:1000-1:10000, ELISA, Immunocytochemistry/ Immunofluorescence, Immunoprecipitation, Sandwich ELISA, Lateral Flow Assay

Images

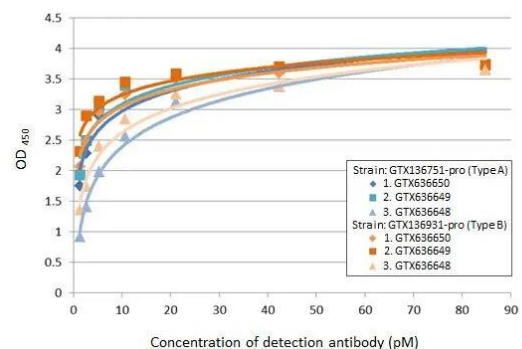
ELISA: Respiratory Syncytial Virus Nucleoprotein Antibody (HL1248) - Azide and BSA Free [NBP3-25628] - Indirect ELISA analysis was performed by coating the plate with recombinant Respiratory syncytial virus type A Nucleoprotein, DDDDK tag (84.76-1.32 nM). Coated protein was probed with the specified respiratory syncytial virus nucleoprotein antibodies (1 ug/mL). Goat anti-rabbit IgG antibody (HRP) (1:10000) or goat anti-mouse IgG antibody (HRP) (1:10000) were used to detect the bound primary antibodies.



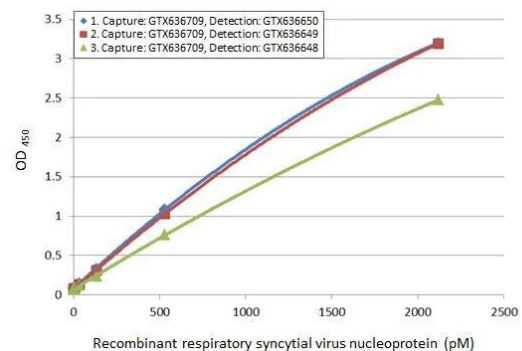
ELISA: Respiratory Syncytial Virus Nucleoprotein Antibody (HL1248) - Azide and BSA Free [NBP3-25628] - Sandwich ELISA of recombinant nucleoproteins (NP) derived from different strains of respiratory syncytial virus (i.e., type A; type B) using ELISA pairs below. Pair 1: Capture: Respiratory Syncytial virus Nucleoprotein antibody [HL1248] (NBP3-25628) (5 ug/mL) Detection: Respiratory Syncytial virus Nucleoprotein antibody [HL1246] (NBP3-25626) conjugated with HRP (1 ug/mL) Pair 2: Capture: Respiratory Syncytial virus Nucleoprotein antibody [HL1247] (NBP3-25627) (5 ug/mL) Detection: Respiratory Syncytial virus Nucleoprotein antibody [HL1246] (NBP3-25626) conjugated with HRP (1 ug/mL) Please notice that detection antibodies need to be conjugated to HRP to function when paired with capture one. Please contact us for custom HRP-conjugated antibody.



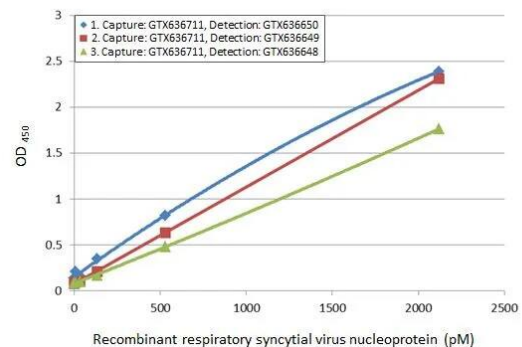
ELISA: Respiratory Syncytial Virus Nucleoprotein Antibody (HL1248) - Azide and BSA Free [NBP3-25628] - Indirect ELISA analysis performed by coating plate with recombinant nucleoproteins (NP) derived from different strains of respiratory syncytial virus (i.e., type A; type B) (84.76-1.32 nM). Coated protein was probed with Respiratory Syncytial virus Nucleoprotein antibodies (1 ug/mL) below. Goat anti-rabbit IgG antibody (HRP) (1:10000) was used to detect bound primary antibody. Antibodies: 1. Respiratory Syncytial virus Nucleoprotein antibody [HL1248] (NBP3-25628) 2. Respiratory Syncytial virus Nucleoprotein antibody [HL1247] (NBP3-25627) 3. Respiratory Syncytial virus type A Nucleoprotein antibody [HL1246] (NBP3-25626)



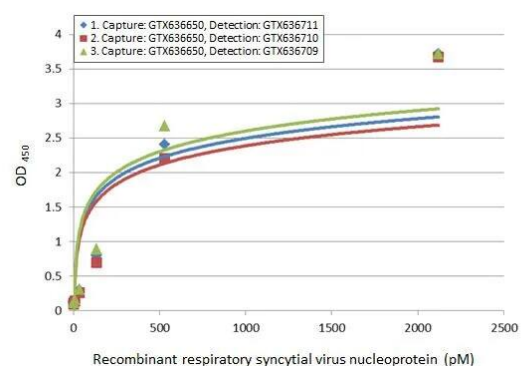
ELISA: Respiratory Syncytial Virus Nucleoprotein Antibody (HL1248) - Azide and BSA Free [NBP3-25628] - Sandwich ELISA detection of recombinant HEK293 expressed, full-length respiratory syncytial virus type A nucleoprotein, DDDDK tag using ELISA pairs below. The amount of capture and detection antibodies are 5 and 1 ug/mL, respectively. Pair 1: Capture: Respiratory Syncytial virus Nucleoprotein antibody [HL1295] (NBP3-25630) Detection: Respiratory Syncytial virus Nucleoprotein antibody [HL1248] (NBP3-25628) conjugated with HRP Pair 2: Capture: Respiratory Syncytial virus Nucleoprotein antibody [HL1295] (NBP3-25630) Detection: Respiratory Syncytial virus Nucleoprotein antibody [HL1247] (NBP3-25627) conjugated with HRP Pair 3: Capture: Respiratory Syncytial virus Nucleoprotein antibody [HL1295] (NBP3-25630) Detection: Respiratory Syncytial virus type A Nucleoprotein antibody [HL1246] (NBP3-25626) conjugated with HRP Please notice that detection antibodies need to be conjugated to HRP to function when paired with capture one. Please contact us for custom HRP-conjugated antibody.



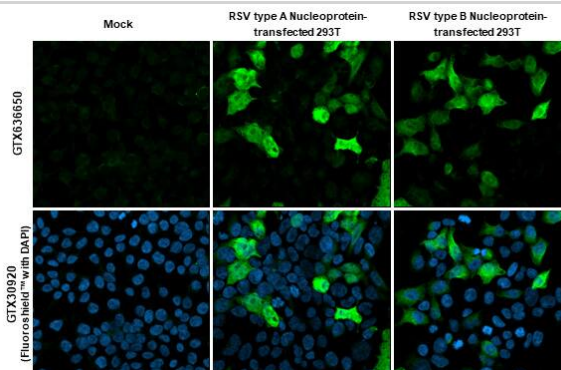
ELISA: Respiratory Syncytial Virus Nucleoprotein Antibody (HL1248) - Azide and BSA Free [NBP3-25628] - Sandwich ELISA detection of recombinant HEK293 expressed, full-length respiratory syncytial virus type A nucleoprotein, DDDDK tag using ELISA pairs below. The amount of capture and detection antibodies are 5 and 1 ug/mL, respectively. Pair 1: Capture: Respiratory Syncytial virus type A Nucleoprotein antibody [HL1297] (NBP3-25632) Detection: Respiratory Syncytial virus Nucleoprotein antibody [HL1248] (NBP3-25628) conjugated with HRP Pair 2: Capture: Respiratory Syncytial virus type A Nucleoprotein antibody [HL1297] (NBP3-25632) Detection: Respiratory Syncytial virus Nucleoprotein antibody [HL1247] (NBP3-25627) conjugated with HRP Pair 3: Capture: Respiratory Syncytial virus type A Nucleoprotein antibody [HL1297] (NBP3-25632) Detection: Respiratory Syncytial virus type A Nucleoprotein antibody [HL1246] (NBP3-25626) conjugated with HRP Please notice that detection antibodies need to be conjugated to HRP to function when paired with capture one. Please contact us for custom HRP-conjugated antibody.



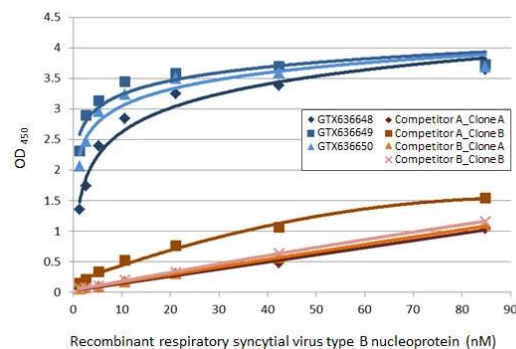
ELISA: Respiratory Syncytial Virus Nucleoprotein Antibody (HL1248) - Azide and BSA Free [NBP3-25628] - Sandwich ELISA detection of recombinant HEK293 expressed, full-length respiratory syncytial virus type A nucleoprotein, DDDDK tag using ELISA pairs below. The amount of capture and detection antibodies are 5 and 1 ug/mL, respectively. Pair 1: Capture: Respiratory Syncytial virus Nucleoprotein antibody [HL1248] (NBP3-25628) Detection: Respiratory Syncytial virus type A Nucleoprotein antibody [HL1297] (NBP3-25632) conjugated with HRP Pair 2: Capture: Respiratory Syncytial virus Nucleoprotein antibody [HL1248] (NBP3-25628) Detection: Respiratory Syncytial virus Nucleoprotein antibody [HL1296] (NBP3-25479) conjugated with HRP Pair 3: Capture: Respiratory Syncytial virus Nucleoprotein antibody [HL1248] (NBP3-25628) Detection: Respiratory Syncytial virus Nucleoprotein antibody [HL1295] (NBP3-25630) conjugated with HRP Please notice that detection antibodies need to be conjugated to HRP to function when paired with capture one. Please contact us for custom HRP-conjugated antibody.



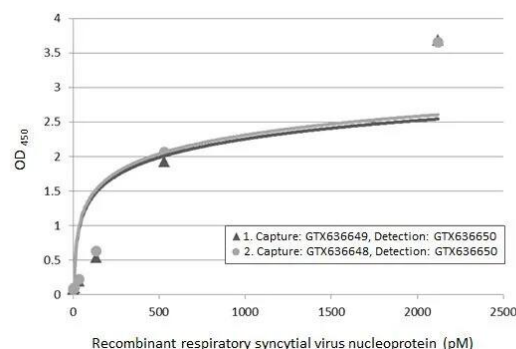
Immunocytochemistry/Immunofluorescence: Respiratory Syncytial Virus Nucleoprotein Antibody (HL1248) - Azide and BSA Free [NBP3-25628] - Respiratory Syncytial virus Nucleoprotein antibody [HL1248] detects Respiratory Syncytial virus Nucleoprotein protein by immunofluorescent analysis. Sample: Mock and transfected 293T cells were fixed in 4% paraformaldehyde at RT for 15 min. Green: Respiratory Syncytial virus Nucleoprotein stained by Respiratory Syncytial virus Nucleoprotein antibody [HL1248] (NBP3-25628) diluted at 1:500. Blue: Fluoroshield with DAPI .



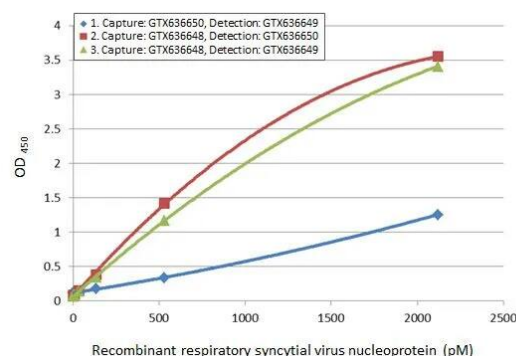
ELISA: Respiratory Syncytial Virus Nucleoprotein Antibody (HL1248) - Azide and BSA Free [NBP3-25628] - Indirect ELISA analysis was performed by coating the plate with recombinant Respiratory Syncytial virus type B Nucleoprotein, DDDDK tag (84.76-1.32 nM). Coated protein was probed with the specified respiratory syncytial virus nucleoprotein antibodies (1 ug/mL). Goat anti-rabbit IgG antibody (HRP) (1:10000) or goat anti-mouse IgG antibody (HRP) (1:10000) were used to detect the bound primary antibodies.



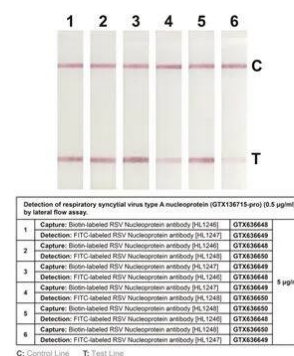
ELISA: Respiratory Syncytial Virus Nucleoprotein Antibody (HL1248) - Azide and BSA Free [NBP3-25628] - Sandwich ELISA detection of recombinant HEK293 expressed, full-length respiratory syncytial virus type A nucleoprotein, DDDDK tag using ELISA pairs below. Pair 1: Capture: Respiratory Syncytial virus Nucleoprotein antibody [HL1247] (NBP3-25627) (5 ug/mL) Detection: Respiratory Syncytial virus Nucleoprotein antibody [HL1248] (NBP3-25628) conjugated with HRP (1 ug/mL) Pair 2: Capture: Respiratory Syncytial virus Nucleoprotein antibody [HL1246] (NBP3-25626) (5 ug/mL) Detection: Respiratory Syncytial virus Nucleoprotein antibody [HL1248] (NBP3-25628) conjugated with HRP (1 ug/mL) Please notice that detection antibodies need to be conjugated to HRP to function when paired with capture one. Please contact us for custom HRP-conjugated antibody.



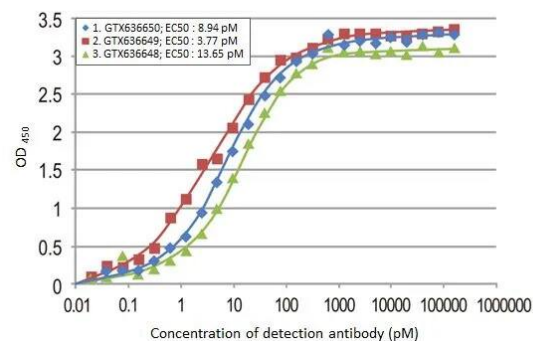
ELISA: Respiratory Syncytial Virus Nucleoprotein Antibody (HL1248) - Azide and BSA Free [NBP3-25628] - Sandwich ELISA detection of recombinant HEK293 expressed, full-length respiratory syncytial virus nucleoprotein using ELISA pairs below. Pair 1: Capture: Respiratory Syncytial virus Nucleoprotein antibody (NBP3-25628) (5 ug/mL) Detection: Respiratory Syncytial virus Nucleoprotein antibody [HL1247] (NBP3-25627) conjugated with HRP (1 ug/mL) Pair 2: Capture: Respiratory Syncytial virus Nucleoprotein antibody [HL1246] (NBP3-25626) (5 ug/mL) Detection: Respiratory Syncytial virus Nucleoprotein antibody [HL1248] (NBP3-25628) conjugated with HRP (1 ug/mL) Pair 3: Capture: Respiratory Syncytial virus Nucleoprotein antibody [HL1246] (NBP3-25626) (5 ug/mL) Detection: Respiratory Syncytial virus Nucleoprotein antibody [HL1247] (NBP3-25627) conjugated with HRP (1 ug/mL) Please notice that detection antibodies need to be conjugated to HRP to function when paired with capture one. Please contact us for custom HRP-conjugated antibody.



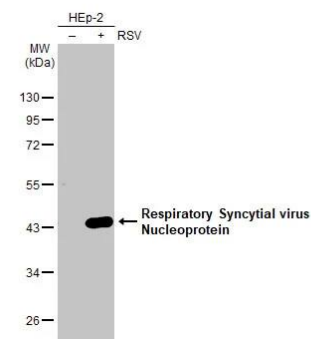
Lateral Flow Assay: Respiratory Syncytial Virus Nucleoprotein Antibody (HL1248) - Azide and BSA Free [NBP3-25628] - Detection of respiratory syncytial virus type A nucleoprotein (0.5 ug/ml) by lateral flow assay using the recombinant rabbit monoclonal antibody pair.



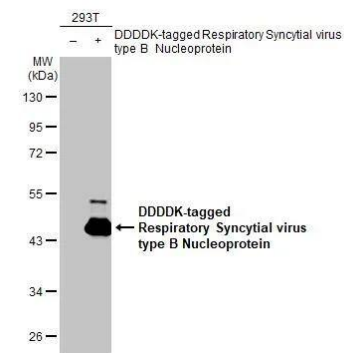
ELISA: Respiratory Syncytial Virus Nucleoprotein Antibody (HL1248) - Azide and BSA Free [NBP3-25628] - Indirect ELISA analysis performed by coating plate with recombinant E.coli expressed, C-terminal respiratory syncytial virus type A nucleoprotein (50 ng). Coated protein was probed with Respiratory Syncytial virus Nucleoprotein antibodies (160000-1.9*10⁻² pM) below. Goat anti-rabbit IgG antibody (HRP) (1:10000) was used to detect bound primary antibody. Antibodies: 1. Respiratory Syncytial virus Nucleoprotein antibody [HL1248] (NBP3-25628) 2. Respiratory Syncytial virus Nucleoprotein antibody [HL1247] (NBP3-25627) 3. Respiratory Syncytial virus type A Nucleoprotein antibody [HL1246] (NBP3-25626)



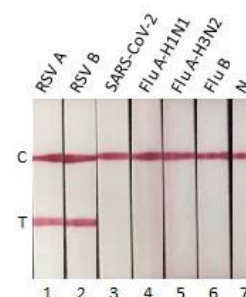
Western Blot: Respiratory Syncytial Virus Nucleoprotein Antibody (HL1248) - Azide and BSA Free [NBP3-25628] - Non-infected (-) and infected (+) HEp-2 whole cell extracts were separated by 10% SDS-PAGE, and the membrane was blotted with Respiratory Syncytial virus Nucleoprotein antibody [HL1248] (NBP3-25628) diluted at 1:1000. The HRP-conjugated anti-rabbit IgG antibody was used to detect the primary antibody.



Non-transfected (-) and transfected (+) 293T whole cell extracts (30 ug) were separated by 10% SDS-PAGE, and the membrane was blotted with Respiratory Syncytial Virus Nucleoprotein antibody [HL1248] (NBP3-25628) diluted at 1:5000. The HRP-conjugated anti-rabbit IgG antibody was used to detect the primary antibody.



Lateral Flow Assay: Respiratory Syncytial Virus Nucleoprotein Antibody (HL1248) - Azide and BSA Free [NBP3-25628] - Detection of Respiratory Syncytial virus Nucleoprotein by lateral flow assay using the monoclonal antibody pair. Capture: Respiratory Syncytial virus Nucleoprotein antibody (NBP3-25628) [HL1248] Detection: Respiratory Syncytial virus Nucleoprotein antibody (NBP3-25626) [HL1246] Samples (25 ng) : 1. RSV type A Nucleoprotein 2. RSV type B Nucleoprotein 3. SARS-CoV-2 Nucleocapsid protein 4. FluA (H1N1) Nucleoprotein 5. FluA (H3N2) Nucleoprotein 6. FluB Nucleoprotein 7. Lysis buffer





Novus Biologicals USA

10730 E. Briarwood Avenue
Centennial, CO 80112
USA
Phone: 303.730.1950
Toll Free: 1.888.506.6887
Fax: 303.730.1966
nb-customerservice@bio-techne.com

Bio-Techne Canada

21 Canmotor Ave
Toronto, ON M8Z 4E6
Canada
Phone: 905.827.6400
Toll Free: 855.668.8722
Fax: 905.827.6402
canada.inquires@bio-techne.com

Bio-Techne Ltd

19 Barton Lane
Abingdon Science Park
Abingdon, OX14 3NB, United Kingdom
Phone: (44) (0) 1235 529449
Free Phone: 0800 37 34 15
Fax: (44) (0) 1235 533420
info.EMEA@bio-techne.com

General Contact Information

www.novusbio.com
Technical Support: nb-technical@bio-techne.com
Orders: nb-customerservice@bio-techne.com
General: novus@novusbio.com

Products Related to NBP3-25628

NBP2-33376H	Blue Marker Antibody (6F4-F6) [HRP]
HAF008	Goat anti-Rabbit IgG Secondary Antibody [HRP]
NB7160	Goat anti-Rabbit IgG (H+L) Secondary Antibody [HRP]
NBP2-24891	Rabbit IgG Isotype Control

Limitations

This product is for research use only and is not approved for use in humans or in clinical diagnosis. Primary Antibodies are guaranteed for 1 year from date of receipt.

For more information on our 100% guarantee, please visit www.novusbio.com/guarantee

Earn gift cards/discounts by submitting a review: www.novusbio.com/reviews/submit/NBP3-25628

Earn gift cards/discounts by submitting a publication using this product:
www.novusbio.com/publications

