

# Product Datasheet

## Respiratory Syncytial Virus Nucleoprotein Antibody (HL1247) - Azide and BSA Free NBP3-25627

Unit Size: 100 ul

Store at 4C short term. Aliquot and store at -20C long term. Avoid freeze-thaw cycles.

[www.novusbio.com](http://www.novusbio.com)



[technical@novusbio.com](mailto:technical@novusbio.com)

Protocols, Publications, Related Products, Reviews, Research Tools and Images at:  
[www.novusbio.com/NBP3-25627](http://www.novusbio.com/NBP3-25627)

Updated 9/9/2025 v.20.1

Earn rewards for product  
reviews and publications.

Submit a publication at [www.novusbio.com/publications](http://www.novusbio.com/publications)

Submit a review at [www.novusbio.com/reviews/destination/NBP3-25627](http://www.novusbio.com/reviews/destination/NBP3-25627)



**NBP3-25627****Respiratory Syncytial Virus Nucleoprotein Antibody (HL1247) - Azide and BSA Free**

<b>Product Information</b>	
<b>Unit Size</b>	100 ul
<b>Concentration</b>	Concentrations vary lot to lot. See vial label for concentration. If unlisted please contact technical services.
<b>Storage</b>	Store at 4C short term. Aliquot and store at -20C long term. Avoid freeze-thaw cycles.
<b>Clonality</b>	Monoclonal
<b>Clone</b>	HL1247
<b>Preservative</b>	No Preservative
<b>Isotype</b>	IgG
<b>Purity</b>	Protein A purified
<b>Buffer</b>	PBS

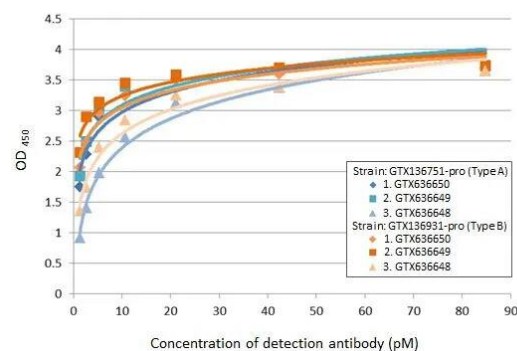
<b>Product Description</b>	
<b>Description</b>	Novus Biologicals Rabbit Respiratory Syncytial Virus Nucleoprotein Antibody (HL1247) - Azide and BSA Free (NBP3-25627) is a recombinant monoclonal antibody validated for use in WB, ELISA and IP. All Novus Biologicals antibodies are covered by our 100% guarantee.
<b>Host</b>	Rabbit
<b>Species</b>	Virus
<b>Reactivity Notes</b>	Respiratory Syncytial Virus
<b>Immunogen</b>	Recombinant protein encompassing a sequence within the C-terminus region of Respiratory Syncytial Virus Nucleoprotein. The exact sequence is proprietary.

<b>Product Application Details</b>	
<b>Applications</b>	Western Blot, ELISA, Immunoprecipitation, Sandwich ELISA, Lateral Flow Assay
<b>Recommended Dilutions</b>	Western Blot, ELISA, Immunoprecipitation, Sandwich ELISA, Lateral Flow Assay

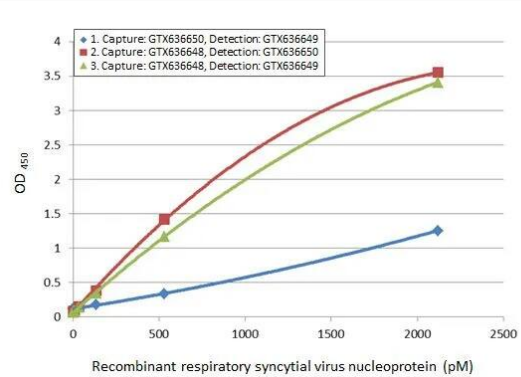
**Images**

ELISA: Respiratory Syncytial Virus Nucleoprotein Antibody (HL1247) - Azide and BSA Free [NBP3-25627] - Indirect ELISA analysis performed by coating plate with recombinant nucleoproteins (NP) derived from different strains of respiratory syncytial virus (i.e., type A; type B) (84.76-1.32 nM). Coated protein was probed with Respiratory Syncytial virus Nucleoprotein antibodies (1 ug/mL) below. Goat anti-rabbit IgG antibody (HRP) (1:10000) was used to detect bound primary antibody. Antibodies:

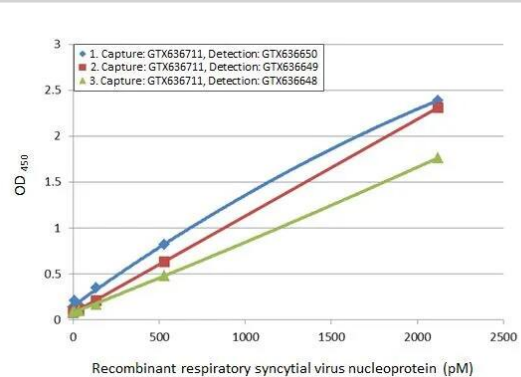
1. Respiratory Syncytial virus Nucleoprotein antibody [HL1248] (NBP3-25628)
2. Respiratory Syncytial virus Nucleoprotein antibody [HL1247] (NBP3-25627)
3. Respiratory Syncytial virus type A Nucleoprotein antibody [HL1246] (NBP3-25626)



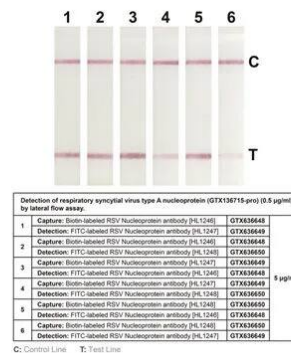
**ELISA: Respiratory Syncytial Virus Nucleoprotein Antibody (HL1247) - Azide and BSA Free [NBP3-25627] - Sandwich ELISA detection of recombinant HEK293 expressed, full-length respiratory syncytial virus nucleoprotein using ELISA pairs below. Pair 1: Capture: Respiratory Syncytial virus Nucleoprotein antibody (NBP3-25628) (5 ug/mL) Detection: Respiratory Syncytial virus Nucleoprotein antibody [HL1247] (NBP3-25627) conjugated with HRP (1 ug/mL) Pair 2: Capture: Respiratory Syncytial virus Nucleoprotein antibody [HL1246 (NBP3-25626) (5 ug/mL) Detection: Respiratory Syncytial virus Nucleoprotein antibody [HL1248] (NBP3-25628) conjugated with HRP (1 ug/mL) Pair 3: Capture: Respiratory Syncytial virus Nucleoprotein antibody [HL1246 (NBP3-25626) (5 ug/mL) Detection: Respiratory Syncytial virus Nucleoprotein antibody [HL1247] (NBP3-25627) conjugated with HRP (1 ug/mL) Please notice that detection antibodies need to be conjugated to HRP to function when paired with capture one. Please contact us for custom HRP-conjugated antibody.**



**ELISA: Respiratory Syncytial Virus Nucleoprotein Antibody (HL1247) - Azide and BSA Free [NBP3-25627] - Sandwich ELISA detection of recombinant HEK293 expressed, full-length respiratory syncytial virus type A nucleoprotein, DDDDK tag using ELISA pairs below. The amount of capture and detection antibodies are 5 and 1 ug/mL, respectively. Pair 1: Capture: Respiratory Syncytial virus type A Nucleoprotein antibody [HL1297] (NBP3-25632) Detection: Respiratory Syncytial virus Nucleoprotein antibody [HL1248] (NBP3-25628) conjugated with HRP Pair 2: Capture: Respiratory Syncytial virus type A Nucleoprotein antibody [HL1297] (NBP3-25632) Detection: Respiratory Syncytial virus Nucleoprotein antibody [HL1247] (NBP3-25627) conjugated with HRP Pair 3: Capture: Respiratory Syncytial virus type A Nucleoprotein antibody [HL1297] (NBP3-25632) Detection: Respiratory Syncytial virus type A Nucleoprotein antibody [HL1246] (NBP3-25626) conjugated with HRP Please notice that detection antibodies need to be conjugated to HRP to function when paired with capture one. Please contact us for custom HRP-conjugated antibody.**



**Lateral Flow Assay: Respiratory Syncytial Virus Nucleoprotein Antibody (HL1247) - Azide and BSA Free [NBP3-25627] - Detection of respiratory syncytial virus type A nucleoprotein (0.5 ug/ml) by lateral flow assay using the recombinant rabbit monoclonal antibody pair.**



Detection of respiratory syncytial virus type A nucleoprotein (GTx136715 pro) (0.5 µg/ml) by lateral flow assay.

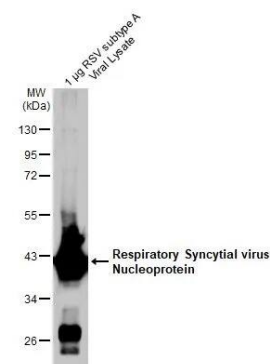
Pair	Capture: Biotin-labeled RSV Nucleoprotein antibody [HL1246]	GTx136648
1	Detection: FITC-labeled RSV Nucleoprotein antibody [HL1247]	GTx136648
2	Capture: Biotin-labeled RSV Nucleoprotein antibody [HL1246]	GTx136648
3	Detection: FITC-labeled RSV Nucleoprotein antibody [HL1248]	GTx136650
4	Capture: Biotin-labeled RSV Nucleoprotein antibody [HL1247]	GTx136648
5	Detection: FITC-labeled RSV Nucleoprotein antibody [HL1248]	GTx136650
6	Capture: Biotin-labeled RSV Nucleoprotein antibody [HL1246]	GTx136648
7	Detection: FITC-labeled RSV Nucleoprotein antibody [HL1247]	GTx136648

C: Control Line T: Test Line

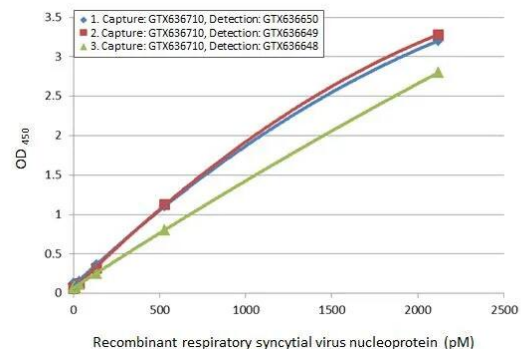
ELISA: Respiratory Syncytial Virus Nucleoprotein Antibody (HL1247) - Azide and BSA Free [NBP3-25627] - Indirect ELISA analysis performed by coating plate with recombinant E.coli expressed, C-terminal respiratory syncytial virus type A nucleoprotein (50 ng). Coated protein was probed with Respiratory Syncytial virus Nucleoprotein antibodies (160000-1.9\*10<sup>-2</sup> pM) below. Goat anti-rabbit IgG antibody (HRP) (1:10000) was used to detect bound primary antibody. Antibodies: 1. Respiratory Syncytial virus Nucleoprotein antibody [HL1248] (NBP3-25628) 2. Respiratory Syncytial virus Nucleoprotein antibody [HL1247] (NBP3-25627) 3. Respiratory Syncytial virus type A Nucleoprotein antibody [HL1246] (NBP3-25626)



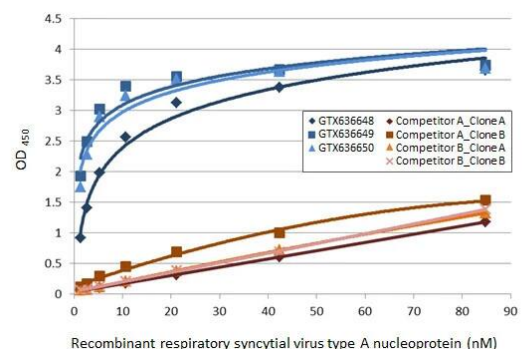
Western Blot: Respiratory Syncytial Virus Nucleoprotein Antibody (HL1247) - Azide and BSA Free [NBP3-25627] - Respiratory syncytial virus lysate (1 ug) was separated by 10% SDS-PAGE, and the membrane was blotted with Respiratory Syncytial virus Nucleoprotein antibody [HL1247] (NBP3-25627) diluted at 1:1000. The HRP-conjugated anti-rabbit IgG antibody was used to detect the primary antibody.



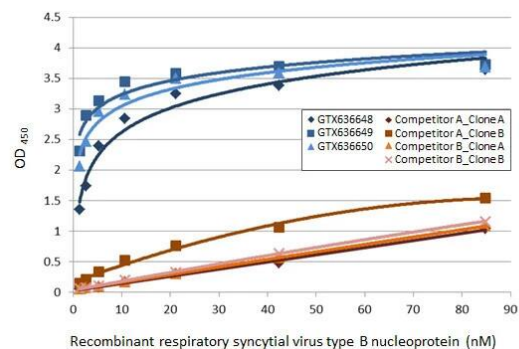
ELISA: Respiratory Syncytial Virus Nucleoprotein Antibody (HL1247) - Azide and BSA Free [NBP3-25627] - Sandwich ELISA detection of recombinant HEK293 expressed, full-length respiratory syncytial virus type A nucleoprotein, DDDDK tag using ELISA pairs below. The amount of capture and detection antibodies are 5 and 1 ug/mL, respectively. Pair 1: Capture: Respiratory Syncytial virus Nucleoprotein antibody [HL1296] (NBP3-25479) Detection: Respiratory Syncytial virus Nucleoprotein antibody [HL1248] (NBP3-25628) conjugated with HRP Pair 2: Capture: Respiratory Syncytial virus Nucleoprotein antibody [HL1296] (NBP3-25479) Detection: Respiratory Syncytial virus Nucleoprotein antibody [HL1247] (NBP3-25627) conjugated with HRP Pair 3: Capture: Respiratory Syncytial virus Nucleoprotein antibody [HL1296] (NBP3-25479) Detection: Respiratory Syncytial virus type A Nucleoprotein antibody [HL1246] (NBP3-25626) conjugated with HRP Please notice that detection antibodies need to be conjugated to HRP to function when paired with capture one. Please contact us for custom HRP-conjugated antibody.



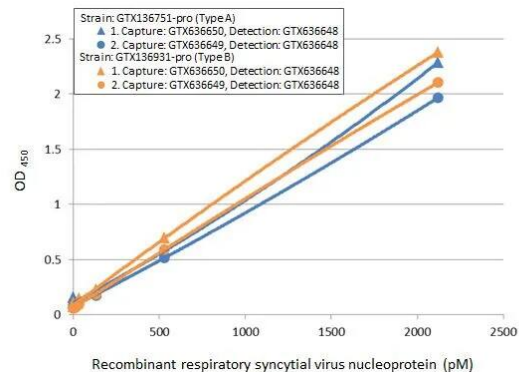
ELISA: Respiratory Syncytial Virus Nucleoprotein Antibody (HL1247) - Azide and BSA Free [NBP3-25627] - Indirect ELISA analysis was performed by coating the plate with recombinant Respiratory syncytial virus type A Nucleoprotein, DDDDK tag (84.76-1.32 nM). Coated protein was probed with the specified respiratory syncytial virus nucleoprotein antibodies (1 ug/mL). Goat anti-rabbit IgG antibody (HRP) (1:10000) or goat anti-mouse IgG antibody (HRP) (1:10000) were used to detect the bound primary antibodies.



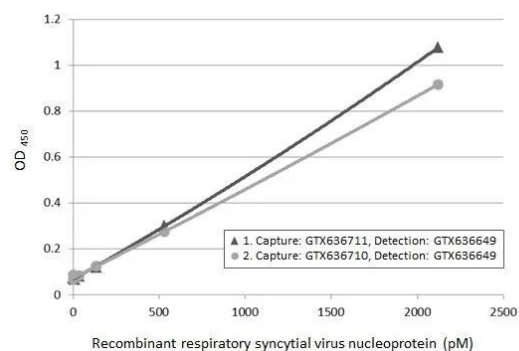
ELISA: Respiratory Syncytial Virus Nucleoprotein Antibody (HL1247) - Azide and BSA Free [NBP3-25627] - Indirect ELISA analysis was performed by coating the plate with recombinant Respiratory Syncytial virus type B Nucleoprotein, DDDDK tag (84.76-1.32 nM). Coated protein was probed with the specified respiratory syncytial virus nucleoprotein antibodies (1 ug/mL). Goat anti-rabbit IgG antibody (HRP) (1:10000) or goat anti-mouse IgG antibody (HRP) (1:10000) were used to detect the bound primary antibodies.



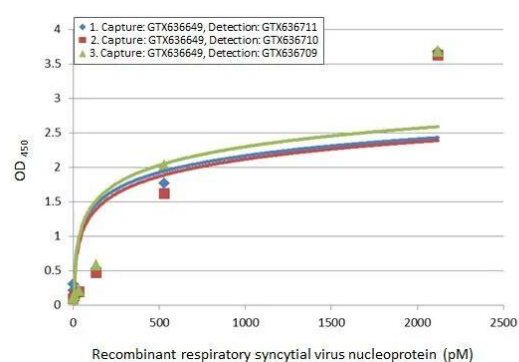
ELISA: Respiratory Syncytial Virus Nucleoprotein Antibody (HL1247) - Azide and BSA Free [NBP3-25627] - Sandwich ELISA of recombinant nucleoproteins (NP) derived from different strains of respiratory syncytial virus (i.e., type A; type B) using ELISA pairs below. Pair 1: Capture: Respiratory Syncytial virus Nucleoprotein antibody [HL1248] (NBP3-25628) (5 ug/mL) Detection: Respiratory Syncytial virus Nucleoprotein antibody [HL1246] (NBP3-25626) conjugated with HRP (1 ug/mL) Pair 2: Capture: Respiratory Syncytial virus Nucleoprotein antibody [HL1247] (NBP3-25627) (5 ug/mL) Detection: Respiratory Syncytial virus Nucleoprotein antibody [HL1246] (NBP3-25626) conjugated with HRP (1 ug/mL) Please notice that detection antibodies need to be conjugated to HRP to function when paired with capture one. Please contact us for custom HRP-conjugated antibody.



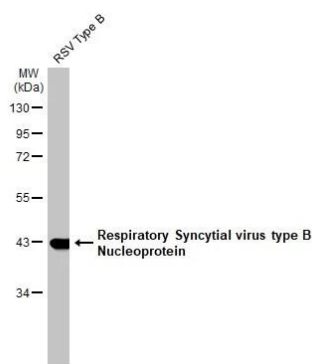
ELISA: Respiratory Syncytial Virus Nucleoprotein Antibody (HL1247) - Azide and BSA Free [NBP3-25627] - Sandwich ELISA detection of recombinant HEK293 expressed, full-length respiratory syncytial virus type A nucleoprotein, DDDDK tag using ELISA pairs below. Pair 1: Capture: Respiratory Syncytial virus type A Nucleoprotein antibody [HL1297] (NBP3-25632) (5 ug/mL) Detection: Respiratory Syncytial virus Nucleoprotein antibody [HL1247] (NBP3-25627) conjugated with HRP (1 ug/mL) Pair 2: Capture: Respiratory Syncytial virus Nucleoprotein antibody [HL1296] (NBP3-25479) (5 ug/mL) Detection: Respiratory Syncytial virus Nucleoprotein antibody [HL1247] (NBP3-25627) conjugated with HRP (1 ug/mL) Please notice that detection antibodies need to be conjugated to HRP to function when paired with capture one. Please contact us for custom HRP-conjugated antibody.



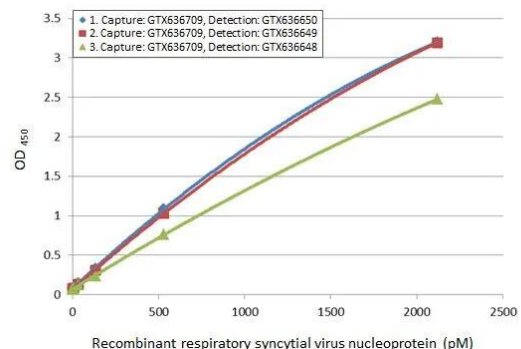
ELISA: Respiratory Syncytial Virus Nucleoprotein Antibody (HL1247) - Azide and BSA Free [NBP3-25627] - Sandwich ELISA detection of recombinant HEK293 expressed, full-length respiratory syncytial virus type A nucleoprotein, DDDDK tag using ELISA pairs below. The amount of capture and detection antibodies are 5 and 1 ug/mL, respectively. Pair 1: Capture: Respiratory Syncytial virus Nucleoprotein antibody [HL1247] (NBP3-25627) Detection: Respiratory Syncytial virus type A Nucleoprotein antibody [HL1297] (NBP3-25632) conjugated with HRP Pair 2: Capture: Respiratory Syncytial virus Nucleoprotein antibody [HL1247] (NBP3-25627) Detection: Respiratory Syncytial virus Nucleoprotein antibody [HL1296] (NBP3-25479) conjugated with HRP Pair 3: Capture: Respiratory Syncytial virus Nucleoprotein antibody [HL1247] (NBP3-25627) Detection: Respiratory Syncytial virus Nucleoprotein antibody [HL1295] (NBP3-25630) conjugated with HRP Please notice that detection antibodies need to be conjugated to HRP to function when paired with capture one. Please contact us for custom HRP-conjugated antibody.



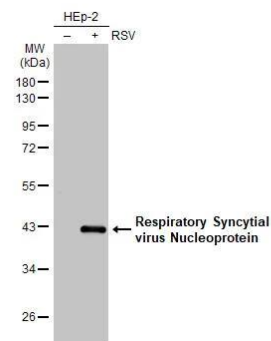
Western Blot: Respiratory Syncytial Virus Nucleoprotein Antibody (HL1247) - Azide and BSA Free [NBP3-25627] - Respiratory syncytial virus lysates (1 ug) was separated by 10% SDS-PAGE, and the membrane was blotted with Respiratory Syncytial virus Nucleoprotein antibody [HL1247] (NBP3-25627) diluted at 1:1000. The HRP-conjugated anti-rabbit IgG antibody was used to detect the primary antibody.



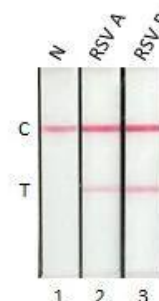
ELISA: Respiratory Syncytial Virus Nucleoprotein Antibody (HL1247) - Azide and BSA Free [NBP3-25627] - Sandwich ELISA detection of recombinant HEK293 expressed, full-length respiratory syncytial virus type A nucleoprotein, DDDDK tag using ELISA pairs below. The amount of capture and detection antibodies are 5 and 1 ug/mL, respectively. Pair 1: Capture: Respiratory Syncytial virus Nucleoprotein antibody [HL1295] (NBP3-25630) Detection: Respiratory Syncytial virus Nucleoprotein antibody [HL1248] (NBP3-25628) conjugated with HRP Pair 2: Capture: Respiratory Syncytial virus Nucleoprotein antibody [HL1295] (NBP3-25630) Detection: Respiratory Syncytial virus Nucleoprotein antibody [HL1247] (NBP3-25627) conjugated with HRP Pair 3: Capture: Respiratory Syncytial virus Nucleoprotein antibody [HL1295] (NBP3-25630) Detection: Respiratory Syncytial virus type A Nucleoprotein antibody [HL1246] (NBP3-25626) conjugated with HRP Please notice that detection antibodies need to be conjugated to HRP to function when paired with capture one. Please contact us for custom HRP-conjugated antibody.



Non-infected (-) and infected (+) HEp-2 whole cell extracts (5 ug) were separated by 10% SDS-PAGE, and the membrane was blotted with Respiratory Syncytial Virus Nucleoprotein antibody [HL1247] (NBP3-25627) diluted at 1:25000. The HRP-conjugated anti-rabbit IgG antibody was used to detect the primary antibody.



Detection of Respiratory Syncytial Virus Nucleoprotein by lateral flow assay using the monoclonal antibody pair. **Capture:** Respiratory Syncytial Virus Nucleoprotein antibody [HL1247] (NBP3-25627) **Detection:** Respiratory Syncytial Virus Nucleoprotein antibody [HL2182]





### **Novus Biologicals USA**

10730 E. Briarwood Avenue  
Centennial, CO 80112  
USA  
Phone: 303.730.1950  
Toll Free: 1.888.506.6887  
Fax: 303.730.1966  
nb-customerservice@bio-techne.com

### **Bio-Techne Canada**

21 Canmotor Ave  
Toronto, ON M8Z 4E6  
Canada  
Phone: 905.827.6400  
Toll Free: 855.668.8722  
Fax: 905.827.6402  
canada.inquires@bio-techne.com

### **Bio-Techne Ltd**

19 Barton Lane  
Abingdon Science Park  
Abingdon, OX14 3NB, United Kingdom  
Phone: (44) (0) 1235 529449  
Free Phone: 0800 37 34 15  
Fax: (44) (0) 1235 533420  
info.EMEA@bio-techne.com

### **General Contact Information**

www.novusbio.com  
Technical Support: nb-technical@bio-techne.com  
Orders: nb-customerservice@bio-techne.com  
General: novus@novusbio.com

### **Products Related to NBP3-25627**

---

NBP2-33376H	Blue Marker Antibody (6F4-F6) [HRP]
HAF008	Goat anti-Rabbit IgG Secondary Antibody [HRP]
NB7160	Goat anti-Rabbit IgG (H+L) Secondary Antibody [HRP]
NBP2-24891	Rabbit IgG Isotype Control

---

### **Limitations**

This product is for research use only and is not approved for use in humans or in clinical diagnosis. Primary Antibodies are guaranteed for 1 year from date of receipt.

For more information on our 100% guarantee, please visit [www.novusbio.com/guarantee](http://www.novusbio.com/guarantee)

Earn gift cards/discounts by submitting a review: [www.novusbio.com/reviews/submit/NBP3-25627](http://www.novusbio.com/reviews/submit/NBP3-25627)

Earn gift cards/discounts by submitting a publication using this product:  
[www.novusbio.com/publications](http://www.novusbio.com/publications)

