

# Product Datasheet

## Mcl-1 Antibody (HL1544) - Azide and BSA Free NBP3-25560

Unit Size: 100 ul

Store at 4C short term. Aliquot and store at -20C long term. Avoid freeze-thaw cycles.

[www.novusbio.com](http://www.novusbio.com)



[technical@novusbio.com](mailto:technical@novusbio.com)

Protocols, Publications, Related Products, Reviews, Research Tools and Images at:  
[www.novusbio.com/NBP3-25560](http://www.novusbio.com/NBP3-25560)

Updated 12/19/2023 v.20.1

Earn rewards for product  
reviews and publications.

Submit a publication at [www.novusbio.com/publications](http://www.novusbio.com/publications)

Submit a review at [www.novusbio.com/reviews/destination/NBP3-25560](http://www.novusbio.com/reviews/destination/NBP3-25560)



**NBP3-25560**

Mcl-1 Antibody (HL1544) - Azide and BSA Free

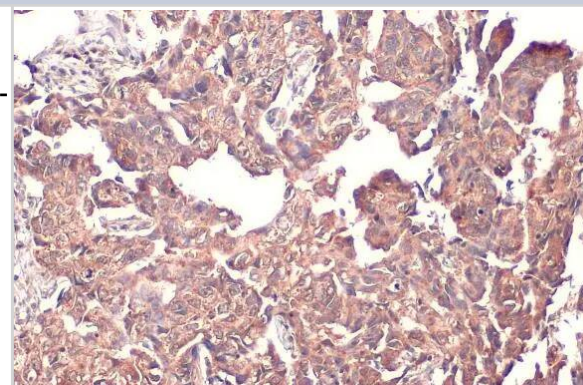
Product Information	
Unit Size	100 ul
Concentration	Concentrations vary lot to lot. See vial label for concentration. If unlisted please contact technical services.
Storage	Store at 4C short term. Aliquot and store at -20C long term. Avoid freeze-thaw cycles.
Clonality	Monoclonal
Clone	HL1544
Preservative	No Preservative
Isotype	IgG
Purity	Protein A purified
Buffer	PBS

Product Description	
Host	Rabbit
Gene ID	4170
Gene Symbol	MCL1
Species	Human, Mouse, Rat, Canine, Feline
Immunogen	Recombinant protein encompassing a sequence within the center region of human Mcl-1. The exact sequence is proprietary.

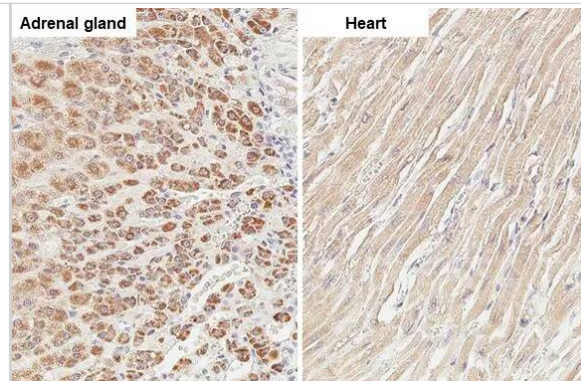
Product Application Details	
Applications	Western Blot, Immunohistochemistry, Immunohistochemistry-Paraffin
Recommended Dilutions	Western Blot 1:500-1:3000, Immunohistochemistry, Immunohistochemistry-Paraffin

**Images**

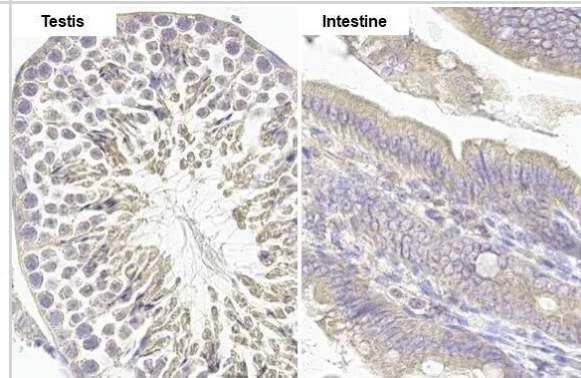
Immunohistochemistry-Paraffin: Mcl-1 Antibody (HL1544) - Azide and BSA Free [NBP3-25560] - MCL1 antibody [HL1544] detects MCL1 protein at cytoplasm by immunohistochemical analysis. Sample: Paraffin-embedded human breast carcinoma. MCL1 stained by MCL1 antibody [HL1544] (NBP3-25560) diluted at 1:100. Antigen Retrieval: Citrate buffer, pH 6.0, 15 min



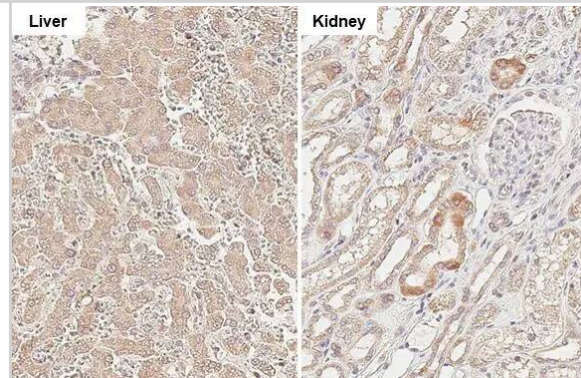
Immunohistochemistry-Paraffin: Mcl-1 Antibody (HL1544) - Azide and BSA Free [NBP3-25560] - MCL1 antibody [HL1544] detects MCL1 protein by immunohistochemical analysis. Sample: Paraffin-embedded cat tissue. MCL1 stained by MCL1 antibody [HL1544] (NBP3-25560) diluted at 1:100. Antigen Retrieval: Citrate buffer, pH 6.0, 15 min



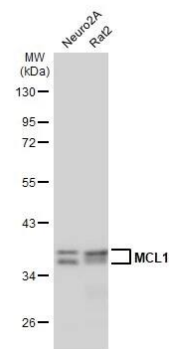
Immunohistochemistry-Paraffin: Mcl-1 Antibody (HL1544) - Azide and BSA Free [NBP3-25560] - MCL1 antibody [HL1544] detects MCL1 protein by immunohistochemical analysis. Sample: Paraffin-embedded mouse tissues. MCL1 stained by MCL1 antibody [HL1544] (NBP3-25560) diluted at 1:100. Antigen Retrieval: Citrate buffer, pH 6.0, 15 min



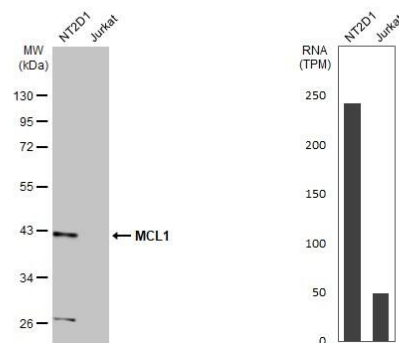
Immunohistochemistry-Paraffin: Mcl-1 Antibody (HL1544) - Azide and BSA Free [NBP3-25560] - MCL1 antibody [HL1544] detects MCL1 protein by immunohistochemical analysis. Sample: Paraffin-embedded dog tissue. MCL1 stained by MCL1 antibody [HL1544] (NBP3-25560) diluted at 1:100. Antigen Retrieval: Citrate buffer, pH 6.0, 15 min



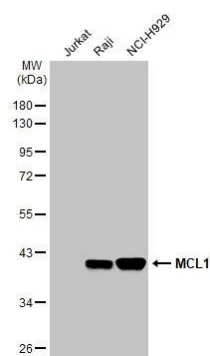
Western Blot: Mcl-1 Antibody (HL1544) - Azide and BSA Free [NBP3-25560] - Various whole cell extracts (30 ug) were separated by 10% SDS-PAGE, and the membrane was blotted with MCL1 antibody [HL1544] (NBP3-25560) diluted at 1:1000. The HRP-conjugated anti-rabbit IgG antibody was used to detect the primary antibody.



Western Blot: Mcl-1 Antibody (HL1544) - Azide and BSA Free [NBP3-25560] - Various whole cell extracts (30 ug) were separated by 10% SDS-PAGE, and the membrane was blotted with MCL1 antibody [HL1544] (NBP3-25560) diluted at 1:1000. The HRP-conjugated anti-rabbit IgG antibody was used to detect the primary antibody. Corresponding RNA expression data for the same cell lines are based on Human Protein Atlas program.



Western Blot: Mcl-1 Antibody (HL1544) - Azide and BSA Free [NBP3-25560] - Various whole cell extracts (30 ug) were separated by 10% SDS-PAGE, and the membrane was blotted with MCL1 antibody [HL1544] (NBP3-25560) diluted at 1:1000. The HRP-conjugated anti-rabbit IgG antibody was used to detect the primary antibody.





### **Novus Biologicals USA**

10730 E. Briarwood Avenue  
Centennial, CO 80112  
USA  
Phone: 303.730.1950  
Toll Free: 1.888.506.6887  
Fax: 303.730.1966  
nb-customerservice@bio-techne.com

### **Bio-Techne Canada**

21 Canmotor Ave  
Toronto, ON M8Z 4E6  
Canada  
Phone: 905.827.6400  
Toll Free: 855.668.8722  
Fax: 905.827.6402  
canada.inquires@bio-techne.com

### **Bio-Techne Ltd**

19 Barton Lane  
Abingdon Science Park  
Abingdon, OX14 3NB, United Kingdom  
Phone: (44) (0) 1235 529449  
Free Phone: 0800 37 34 15  
Fax: (44) (0) 1235 533420  
info.EMEA@bio-techne.com

### **General Contact Information**

www.novusbio.com  
Technical Support: nb-technical@bio-techne.com  
Orders: nb-customerservice@bio-techne.com  
General: novus@novusbio.com

### **Products Related to NBP3-25560**

---

HAF008	Goat anti-Rabbit IgG Secondary Antibody [HRP]
NB7160	Goat anti-Rabbit IgG (H+L) Secondary Antibody [HRP]
NBP2-24891	Rabbit IgG Isotype Control
NB100-56146PEP	Mcl-1 Antibody Blocking Peptide

---

### **Limitations**

This product is for research use only and is not approved for use in humans or in clinical diagnosis. Primary Antibodies are guaranteed for 1 year from date of receipt.

For more information on our 100% guarantee, please visit [www.novusbio.com/guarantee](http://www.novusbio.com/guarantee)

Earn gift cards/discounts by submitting a review: [www.novusbio.com/reviews/submit/NBP3-25560](http://www.novusbio.com/reviews/submit/NBP3-25560)

Earn gift cards/discounts by submitting a publication using this product:  
[www.novusbio.com/publications](http://www.novusbio.com/publications)

