

# Product Datasheet

## Dopamine D2R/DRD2 Antibody (HL1584) - Azide and BSA Free NBP3-25444

Unit Size: 100 ul

Store at 4C short term. Aliquot and store at -20C long term. Avoid freeze-thaw cycles.

[www.novusbio.com](http://www.novusbio.com)



[technical@novusbio.com](mailto:technical@novusbio.com)

Protocols, Publications, Related Products, Reviews, Research Tools and Images at:  
[www.novusbio.com/NBP3-25444](http://www.novusbio.com/NBP3-25444)

Updated 1/26/2025 v.20.1

Earn rewards for product reviews and publications.

Submit a publication at [www.novusbio.com/publications](http://www.novusbio.com/publications)

Submit a review at [www.novusbio.com/reviews/destination/NBP3-25444](http://www.novusbio.com/reviews/destination/NBP3-25444)



**NBP3-25444**

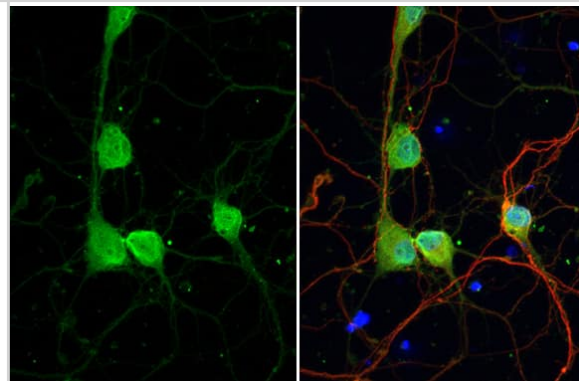
Dopamine D2R/DRD2 Antibody (HL1584) - Azide and BSA Free

| <b>Product Information</b>         |   |
|------------------------------------|---|
| <b>Unit Size</b>                   | 100 ul  |
| <b>Concentration</b>               | Concentrations vary lot to lot. See vial label for concentration. If unlisted please contact technical services.                        |
| <b>Storage</b>                     | Store at 4C short term. Aliquot and store at -20C long term. Avoid freeze-thaw cycles.  |
| <b>Clonality</b>                   | Monoclonal  |
| <b>Clone</b>                       | HL1584  |
| <b>Preservative</b>                | No Preservative   |
| <b>Isotype</b>                     | IgG   |
| <b>Purity</b>                      | Protein A purified  |
| <b>Buffer</b>                      | PBS   |
| <b>Target Molecular Weight</b>     | 57 kDa  |
| <b>Product Description</b>         |   |
| <b>Host</b>                        | Rabbit  |
| <b>Gene ID</b>                     | 1813  |
| <b>Gene Symbol</b>                 | DRD2  |
| <b>Species</b>                     | Human, Mouse, Rat   |
| <b>Reactivity Notes</b>            | Immunogen displays the following percentage of sequence identity for non-tested species: Bovine (86%), Porcine (88%).                   |
| <b>Immunogen</b>                   | Recombinant protein encompassing a sequence within the N-terminus region of human Dopamine D2R/DRD2. The exact sequence is proprietary. |
| <b>Product Application Details</b> |   |
| <b>Applications</b>                | Western Blot, Immunocytochemistry/ Immunofluorescence   |
| <b>Recommended Dilutions</b>       | Western Blot 1:500-1:3000, Immunocytochemistry/ Immunofluorescence Assay dependent  |

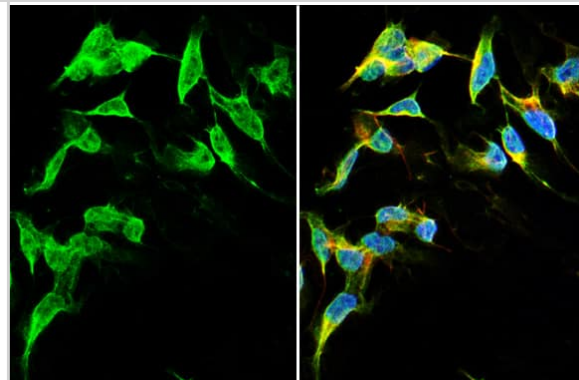


## Images

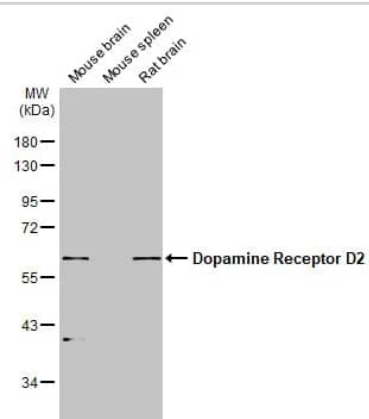
Immunocytochemistry/Immunofluorescence: Dopamine D2R/DRD2 Antibody (HL1584) - Azide and BSA Free [NBP3-25444] - Dopamine Receptor D2 antibody [HL1584] detects Dopamine Receptor D2 protein at cell membrane by immunofluorescent analysis. Sample: DIV9 rat E18 primary cortical neuron cells were fixed in 4% paraformaldehyde at RT for 15 min. Green: Dopamine Receptor D2 stained by Dopamine Receptor D2 antibody [HL1584] (NBP3-25444) diluted at 1:250. Red: Tau, an axon marker, stained by Tau antibody [GT287] diluted at 1:500. Blue: Fluoroshield with DAPI .



Immunocytochemistry/Immunofluorescence: Dopamine D2R/DRD2 Antibody (HL1584) - Azide and BSA Free [NBP3-25444] - Dopamine Receptor D2 antibody [HL1584] detects Dopamine Receptor D2 protein by immunofluorescent analysis. Sample: SH-SY-5Y cells were fixed in 4% paraformaldehyde at RT for 15 min. Green: Dopamine Receptor D2 stained by Dopamine Receptor D2 antibody [HL1584] (NBP3-25444) diluted at 1:500. Red: alpha Tubulin, a cytoskeleton marker, stained by alpha Tubulin antibody [GT114] (NBP2-43837) diluted at 1:1000. Blue: Fluoroshield with DAPI .



Western Blot: Dopamine D2R/DRD2 Antibody (HL1584) -Various tissue extracts (50  $\mu$ g) were separated by 10% SDS-PAGE, and the membrane was blotted with Dopamine Receptor D2 antibody [HL1584] diluted at 1:1000. The HRP-conjugated anti-rabbit IgG antibody (NBP2-19301) was used to detect the primary antibody.





### **Novus Biologicals USA**

10730 E. Briarwood Avenue  
Centennial, CO 80112  
USA  
Phone: 303.730.1950  
Toll Free: 1.888.506.6887  
Fax: 303.730.1966  
nb-customerservice@bio-techne.com

### **Bio-Techne Canada**

21 Canmotor Ave  
Toronto, ON M8Z 4E6  
Canada  
Phone: 905.827.6400  
Toll Free: 855.668.8722  
Fax: 905.827.6402  
canada.inquires@bio-techne.com

### **Bio-Techne Ltd**

19 Barton Lane  
Abingdon Science Park  
Abingdon, OX14 3NB, United Kingdom  
Phone: (44) (0) 1235 529449  
Free Phone: 0800 37 34 15  
Fax: (44) (0) 1235 533420  
info.EMEA@bio-techne.com

### **General Contact Information**

www.novusbio.com  
Technical Support: nb-technical@bio-techne.com  
Orders: nb-customerservice@bio-techne.com  
General: novus@novusbio.com

### **Products Related to NBP3-25444**

---

|                    |  |
|--------------------|--|
| HAF008             | Goat anti-Rabbit IgG Secondary Antibody [HRP]            |
| NB7160             | Goat anti-Rabbit IgG (H+L) Secondary Antibody [HRP]      |
| NBP2-24891         | Rabbit IgG Isotype Control                               |
| H00001813-Q01-10ug | Recombinant Human Dopamine D2R/DRD2 GST (N-Term) Protein |

---

### **Limitations**

This product is for research use only and is not approved for use in humans or in clinical diagnosis. Primary Antibodies are guaranteed for 1 year from date of receipt.

For more information on our 100% guarantee, please visit [www.novusbio.com/guarantee](http://www.novusbio.com/guarantee)

Earn gift cards/discounts by submitting a review: [www.novusbio.com/reviews/submit/NBP3-25444](http://www.novusbio.com/reviews/submit/NBP3-25444)

Earn gift cards/discounts by submitting a publication using this product:  
[www.novusbio.com/publications](http://www.novusbio.com/publications)

