

# Product Datasheet

## CPT1A Antibody (HL1164) - Azide and BSA Free NBP3-25423

Unit Size: 100 ul

Store at 4C short term. Aliquot and store at -20C long term. Avoid freeze-thaw cycles.

[www.novusbio.com](http://www.novusbio.com)



[technical@novusbio.com](mailto:technical@novusbio.com)

Protocols, Publications, Related Products, Reviews, Research Tools and Images at:  
[www.novusbio.com/NBP3-25423](http://www.novusbio.com/NBP3-25423)

Updated 9/9/2025 v.20.1

Earn rewards for product  
reviews and publications.

Submit a publication at [www.novusbio.com/publications](http://www.novusbio.com/publications)

Submit a review at [www.novusbio.com/reviews/destination/NBP3-25423](http://www.novusbio.com/reviews/destination/NBP3-25423)



**NBP3-25423**

CPT1A Antibody (HL1164) - Azide and BSA Free

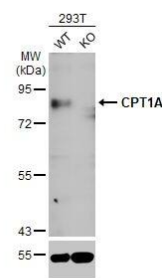
Product Information	
Unit Size	100 ul
Concentration	Concentrations vary lot to lot. See vial label for concentration. If unlisted please contact technical services.
Storage	Store at 4C short term. Aliquot and store at -20C long term. Avoid freeze-thaw cycles.
Clonality	Monoclonal
Clone	HL1164
Preservative	No Preservative
Isotype	IgG
Purity	Protein A purified
Buffer	PBS
Target Molecular Weight	88 kDa

Product Description	
Description	Novus Biologicals Rabbit CPT1A Antibody (HL1164) - Azide and BSA Free (NBP3-25423) is a recombinant monoclonal antibody validated for use in IHC and WB. All Novus Biologicals antibodies are covered by our 100% guarantee.
Host	Rabbit
Gene ID	1374
Gene Symbol	CPT1A
Species	Human, Mouse, Canine, Feline
Reactivity Notes	Immunogen displays the following percentage of sequence identity for non-tested species: Rat (82%), Sheep (85%), Bovine (86%), Porcine (89%).
Immunogen	Recombinant protein encompassing a sequence within the center region of human CPT1A. The exact sequence is proprietary.

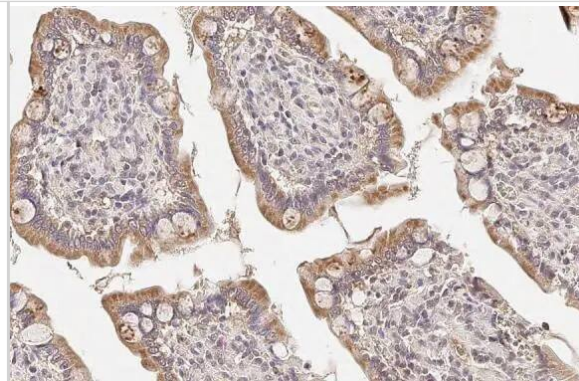
Product Application Details	
Applications	Western Blot, Immunohistochemistry-Paraffin, Immunohistochemistry
Recommended Dilutions	Western Blot 1:500-1:3000, Immunohistochemistry Assay dependent, Immunohistochemistry-Paraffin Assay dependent

**Images**

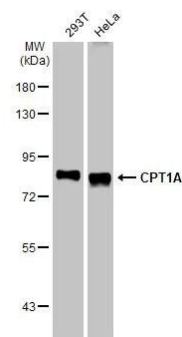
Western Blot: CPT1A Antibody (HL1164) - Azide and BSA Free [NBP3-25423] - Wild-type (WT) and CPT1A knockout (KO) 293T cell extracts (30 ug) were separated by 7.5% SDS-PAGE, and the membrane was blotted with CPT1A antibody [HL1164] (NBP3-25423) diluted at 1:1000. The HRP-conjugated anti-rabbit IgG antibody was used to detect the primary antibody, and the signal was developed with Trident ECL plus-Enhanced.



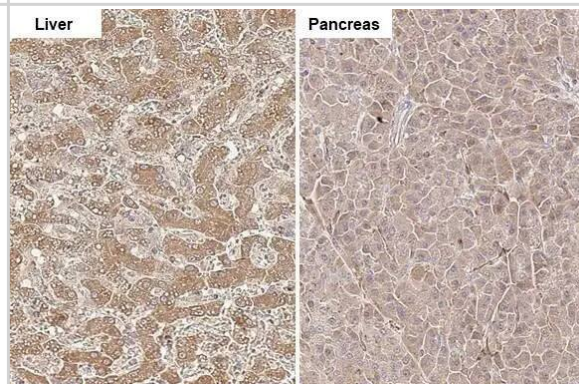
**Immunohistochemistry-Paraffin:** CPT1A Antibody (HL1164) - Azide and BSA Free [NBP3-25423] - CPT1A antibody [HL1164] detects CPT1A protein at mitochondria by immunohistochemical analysis. Sample: Paraffin-embedded dog intestine. CPT1A stained by CPT1A antibody [HL1164] (NBP3-25423) diluted at 1:100. Antigen Retrieval: Citrate buffer, pH 6.0, 15 min



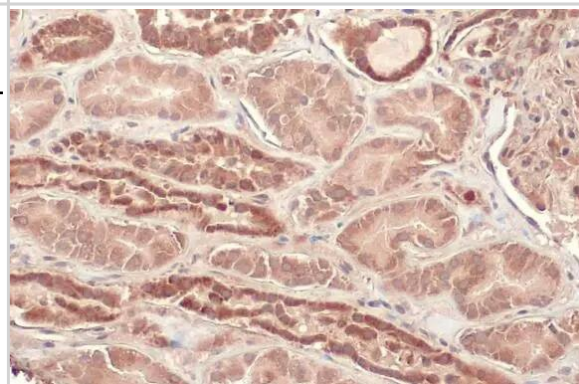
**Western Blot:** CPT1A Antibody (HL1164) - Azide and BSA Free [NBP3-25423] - Various whole cell extracts (30 ug) were separated by 7.5% SDS-PAGE, and the membrane was blotted with CPT1A antibody [HL1164] (NBP3-25423) diluted at 1:1000. The HRP-conjugated anti-rabbit IgG antibody was used to detect the primary antibody.



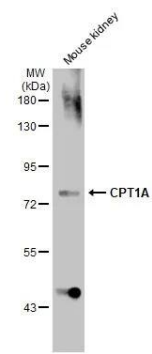
**Immunohistochemistry-Paraffin:** CPT1A Antibody (HL1164) - Azide and BSA Free [NBP3-25423] - CPT1A antibody [HL1164] detects CPT1A protein at mitochondria by immunohistochemical analysis. Sample: Paraffin-embedded cat tissues. CPT1A stained by CPT1A antibody [HL1164] (NBP3-25423) diluted at 1:100. Antigen Retrieval: Citrate buffer, pH 6.0, 15 min



**Immunohistochemistry-Paraffin:** CPT1A Antibody (HL1164) - Azide and BSA Free [NBP3-25423] - CPT1A antibody [HL1164] detects CPT1A protein at cytoplasm by immunohistochemical analysis. Sample: Paraffin-embedded human kidney. CPT1A stained by CPT1A antibody [HL1164] (NBP3-25423) diluted at 1:100. Antigen Retrieval: Citrate buffer, pH 6.0, 15 min



Western Blot: CPT1A Antibody (HL1164) - Azide and BSA Free [NBP3-25423] - Mouse tissue extract (50 ug) was separated by 7.5% SDS-PAGE, and the membrane was blotted with CPT1A antibody [HL1164] (NBP3-25423) diluted at 1:1000. The HRP-conjugated anti-rabbit IgG antibody was used to detect the primary antibody.





### **Novus Biologicals USA**

10730 E. Briarwood Avenue  
Centennial, CO 80112  
USA  
Phone: 303.730.1950  
Toll Free: 1.888.506.6887  
Fax: 303.730.1966  
nb-customerservice@bio-techne.com

### **Bio-Techne Canada**

21 Canmotor Ave  
Toronto, ON M8Z 4E6  
Canada  
Phone: 905.827.6400  
Toll Free: 855.668.8722  
Fax: 905.827.6402  
canada.inquires@bio-techne.com

### **Bio-Techne Ltd**

19 Barton Lane  
Abingdon Science Park  
Abingdon, OX14 3NB, United Kingdom  
Phone: (44) (0) 1235 529449  
Free Phone: 0800 37 34 15  
Fax: (44) (0) 1235 533420  
info.EMEA@bio-techne.com

### **General Contact Information**

www.novusbio.com  
Technical Support: nb-technical@bio-techne.com  
Orders: nb-customerservice@bio-techne.com  
General: novus@novusbio.com

### **Products Related to NBP3-25423**

---

NBP2-33376H	Blue Marker Antibody (6F4-F6) [HRP]
HAF008	Goat anti-Rabbit IgG Secondary Antibody [HRP]
NB7160	Goat anti-Rabbit IgG (H+L) Secondary Antibody [HRP]
NBP2-24891	Rabbit IgG Isotype Control

---

### **Limitations**

This product is for research use only and is not approved for use in humans or in clinical diagnosis. Primary Antibodies are guaranteed for 1 year from date of receipt.

For more information on our 100% guarantee, please visit [www.novusbio.com/guarantee](http://www.novusbio.com/guarantee)

Earn gift cards/discounts by submitting a review: [www.novusbio.com/reviews/submit/NBP3-25423](http://www.novusbio.com/reviews/submit/NBP3-25423)

Earn gift cards/discounts by submitting a publication using this product:  
[www.novusbio.com/publications](http://www.novusbio.com/publications)

