

Product Datasheet

Lgr5/GPR49 Antibody (CL13579)

NBP3-24571-100ul

Unit Size: 100 ul

Store at 4C short term. Aliquot and store at -20C long term. Avoid freeze-thaw cycles.

www.novusbio.com



technical@novusbio.com

Protocols, Publications, Related Products, Reviews, Research Tools and Images at:
www.novusbio.com/NBP3-24571

Updated 2/27/2025 v.20.1

Earn rewards for product reviews and publications.

Submit a publication at www.novusbio.com/publications

Submit a review at www.novusbio.com/reviews/destination/NBP3-24571



NBP3-24571-100ul

Lgr5/GPR49 Antibody (CL13579)

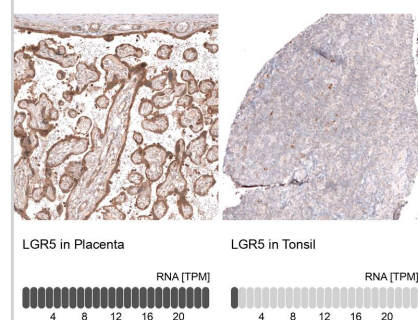
Product Information	
Unit Size	100 ul
Concentration	Concentrations vary lot to lot. See vial label for concentration. If unlisted please contact technical services.
Storage	Store at 4C short term. Aliquot and store at -20C long term. Avoid freeze-thaw cycles.
Clonality	Monoclonal
Clone	CL13579
Preservative	0.02% Sodium Azide
Isotype	IgG1
Purity	Protein A purified
Buffer	PBS, pH 7.2, 40% glycerol

Product Description	
Host	Mouse
Gene ID	8549
Gene Symbol	LGR5
Species	Human
Immunogen	This antibody was developed using a synthetic peptide derived from O75473, with the exact immunogen sequence remaining proprietary.

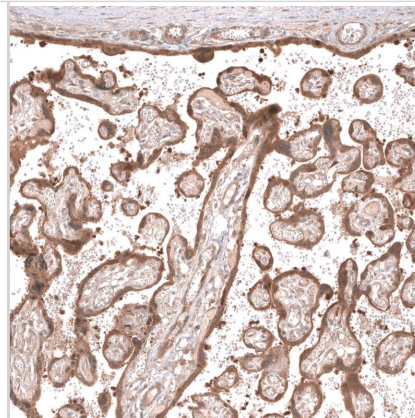
Product Application Details	
Applications	Immunohistochemistry, Immunohistochemistry-Paraffin
Recommended Dilutions	Immunohistochemistry 1:200 - 1:500, Immunohistochemistry-Paraffin 1:200 - 1:500
Application Notes	For IHC-Paraffin, we recommend using Heat-Induced Epitope Retrieval (HIER) with a pH level of 6. This optimized retrieval method ensures the best results for your experiments.

Images

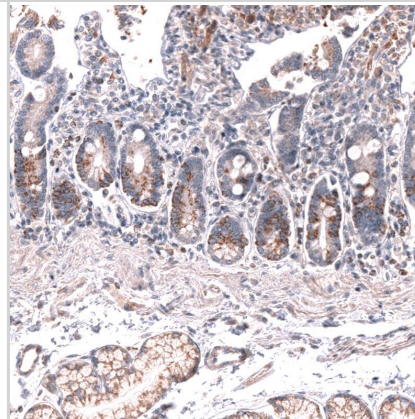
Analysis in human placenta and tonsil tissues using NBP3-24571 antibody. Corresponding LGR5 RNA-seq data are presented for the same tissues.



Staining of human placenta shows moderate cytoplasmic and membranous positivity in trophoblastic cells.



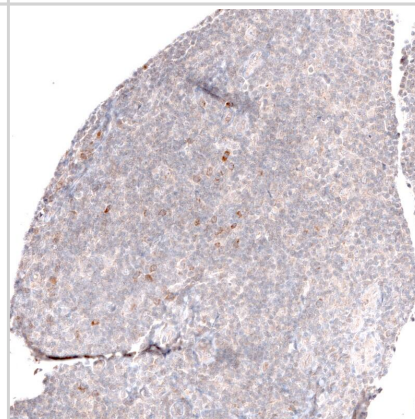
Staining of human duodenum shows moderate cytoplasmic and membranous positivity in glandular cells.



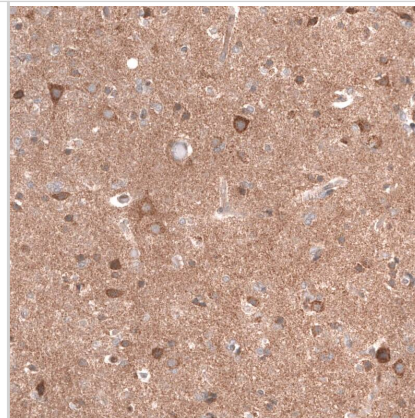
Staining of human ovarian cancer (endometrioid carcinoma) shows moderate cytoplasmic positivity in tumor cells.



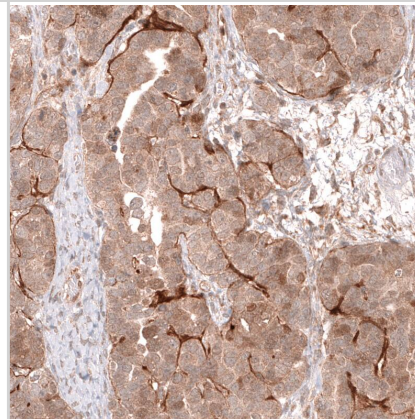
Staining of human tonsil shows mainly very weak positivity in non-germinal center cells.



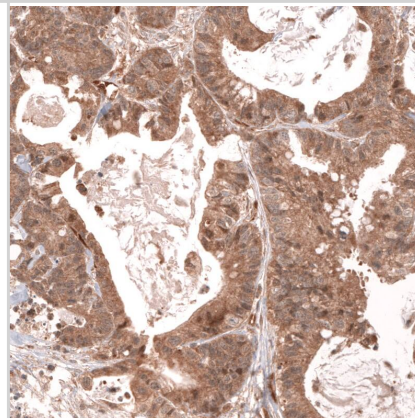
Staining of human cerebral cortex shows moderate cytoplasmic and membranous positivity in neurons and neuropil.



Staining of human ovarian cancer (papillary carcinoma) shows moderate to strong cytoplasmic and membranous positivity in tumor cells.



Staining of human colorectal cancer shows moderate cytoplasmic positivity in tumor cells.





Novus Biologicals USA

10730 E. Briarwood Avenue
Centennial, CO 80112
USA
Phone: 303.730.1950
Toll Free: 1.888.506.6887
Fax: 303.730.1966
nb-customerservice@bio-techne.com

Bio-Techne Canada

21 Canmotor Ave
Toronto, ON M8Z 4E6
Canada
Phone: 905.827.6400
Toll Free: 855.668.8722
Fax: 905.827.6402
canada.inquires@bio-techne.com

Bio-Techne Ltd

19 Barton Lane
Abingdon Science Park
Abingdon, OX14 3NB, United Kingdom
Phone: (44) (0) 1235 529449
Free Phone: 0800 37 34 15
Fax: (44) (0) 1235 533420
info.EMEA@bio-techne.com

General Contact Information

www.novusbio.com
Technical Support: nb-technical@bio-techne.com
Orders: nb-customerservice@bio-techne.com
General: novus@novusbio.com

Error: Subreport could not be shown.

Limitations

This product is for research use only and is not approved for use in humans or in clinical diagnosis. Primary Antibodies are guaranteed for 1 year from date of receipt.

For more information on our 100% guarantee, please visit www.novusbio.com/guarantee

Earn gift cards/discounts by submitting a review: www.novusbio.com/reviews/submit/NBP3-24571

Earn gift cards/discounts by submitting a publication using this product:
www.novusbio.com/publications

