

# Product Datasheet

## Lactate Dehydrogenase Activity Assay Kit (Colorimetric) NBP3-24511

Unit Size: 100 Assays

Storage of components varies. See protocol for specific instructions.

[www.novusbio.com](http://www.novusbio.com)



[technical@novusbio.com](mailto:technical@novusbio.com)

Protocols, Publications, Related Products, Reviews, Research Tools and Images at:  
[www.novusbio.com/NBP3-24511](http://www.novusbio.com/NBP3-24511)

Updated 3/3/2024 v.20.1

Earn rewards for product  
reviews and publications.

Submit a publication at [www.novusbio.com/publications](http://www.novusbio.com/publications)

Submit a review at [www.novusbio.com/reviews/destination/NBP3-24511](http://www.novusbio.com/reviews/destination/NBP3-24511)



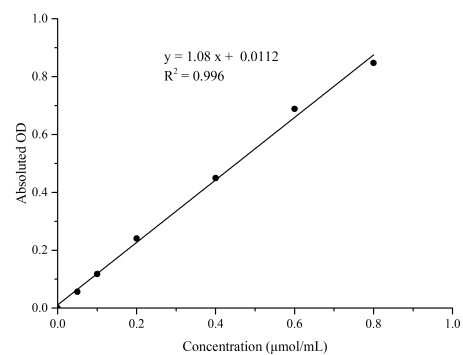
**NBP3-24511****Lactate Dehydrogenase Activity Assay Kit (Colorimetric)**

<b>Product Information</b>	
<b>Unit Size</b>	100 Assays
<b>Concentration</b>	Concentration is not relevant for this product. Please see the protocols for proper use of this product.
<b>Storage</b>	Storage of components varies. See protocol for specific instructions.
<b>Product Description</b>	
<b>Description</b>	Detection instrument: Spectrophotometer (450 nm) Assay time: 70 min
<b>Gene ID</b>	3945
<b>Gene Symbol</b>	LDHB
<b>Species</b>	Non-species specific
<b>Kit Components</b>	Reagent 1: Substrate Buffer, Reagent 2: Coenzyme I, Reagent 3: Chromogenic Agent, Reagent 4: Alkali Reagent, Reagent 5: 2 umol/mL Pyruvic Acid Standard
<b>Standard Curve Range</b>	4 - 400 U/L
<b>Sensitivity</b>	4 U/L
<b>Inter Assay</b>	%CV < 7.2
<b>Intra Assay</b>	%CV < 2.2
<b>Suitable Sample Type</b>	Serum, plasma, tissue and cell samples
<b>Product Application Details</b>	
<b>Applications</b>	Functional
<b>Recommended Dilutions</b>	Functional

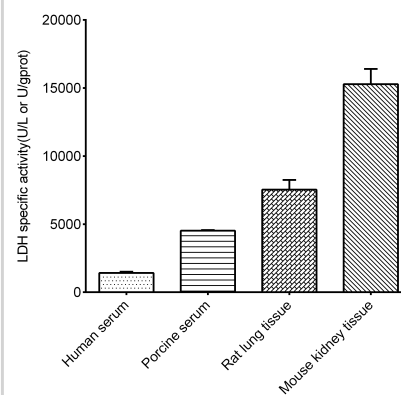


## Images

### Lactate Dehydrogenase Activity Assay Kit (Colorimetric) [NBP3-24511] - Standard Reference Curve



### Lactate Dehydrogenase Activity Assay Kit (Colorimetric) [NBP3-24511] - Assay Example





### **Novus Biologicals USA**

10730 E. Briarwood Avenue  
Centennial, CO 80112  
USA  
Phone: 303.730.1950  
Toll Free: 1.888.506.6887  
Fax: 303.730.1966  
nb-customerservice@bio-techne.com

### **Bio-Techne Canada**

21 Canmotor Ave  
Toronto, ON M8Z 4E6  
Canada  
Phone: 905.827.6400  
Toll Free: 855.668.8722  
Fax: 905.827.6402  
canada.inquires@bio-techne.com

### **Bio-Techne Ltd**

19 Barton Lane  
Abingdon Science Park  
Abingdon, OX14 3NB, United Kingdom  
Phone: (44) (0) 1235 529449  
Free Phone: 0800 37 34 15  
Fax: (44) (0) 1235 533420  
info.EMEA@bio-techne.com

### **General Contact Information**

www.novusbio.com  
Technical Support: nb-technical@bio-techne.com  
Orders: nb-customerservice@bio-techne.com  
General: novus@novusbio.com

### **Products Related to NBP3-24511**

---

NBP2-49694-20ug	Recombinant Human Lactate Dehydrogenase Protein
NB300-221	GAPDH Antibody (1D4)
NB600-861-100ug	Lactate Dehydrogenase Antibody
NBP1-48336	Lactate Dehydrogenase A/LDHA Antibody - BSA Free

---

### **Limitations**

This product is for research use only and is not approved for use in humans or in clinical diagnosis. Kits are guaranteed for 6 months from date of receipt.

For more information on our 100% guarantee, please visit [www.novusbio.com/guarantee](http://www.novusbio.com/guarantee)

Earn gift cards/discounts by submitting a review: [www.novusbio.com/reviews/submit/NBP3-24511](http://www.novusbio.com/reviews/submit/NBP3-24511)

Earn gift cards/discounts by submitting a publication using this product:  
[www.novusbio.com/publications](http://www.novusbio.com/publications)

