

# Product Datasheet

## Cytokeratin, pan Antibody (MonoPoly/4999R) NBP3-23627-100ug

Unit Size: 100 ug

Store at 4C.

[www.novusbio.com](http://www.novusbio.com)



[technical@novusbio.com](mailto:technical@novusbio.com)

Protocols, Publications, Related Products, Reviews, Research Tools and Images at:  
[www.novusbio.com/NBP3-23627](http://www.novusbio.com/NBP3-23627)

Updated 10/7/2024 v.20.1

Earn rewards for product  
reviews and publications.

Submit a publication at [www.novusbio.com/publications](http://www.novusbio.com/publications)

Submit a review at [www.novusbio.com/reviews/destination/NBP3-23627](http://www.novusbio.com/reviews/destination/NBP3-23627)



**NBP3-23627-100ug**

Cytokeratin, pan Antibody (MonoPoly/4999R)

Product Information	
Unit Size	100 ug
Concentration	0.2 mg/ml
Storage	Store at 4C.
Clonality	Monoclonal
Clone	MonoPoly/4999R
Preservative	0.05% Sodium Azide
Isotype	IgG Kappa
Purity	Protein A or G purified
Buffer	10mM PBS with 0.05% BSA
Product Description	
Description	Store at 2 to 8C. Non-hazardous. No MSDS required.
Host	Rabbit
Gene ID	3848
Gene Symbol	KRT1
Species	Human
Marker	Epithelial Marker
Specificity/Sensitivity	<p>MonoPoly antibodies are designed by pooling several monospecific, recombinant monoclonal antibodies against a target. MonoPoly antibodies are a kind of synthetic polyclonal antibodies that can be produced in unlimited quantity with a strict lot-to-lot consistency. These antibodies are highly specific with exquisite sensitivity and a single MonoPoly antibody can be used for a variety of applications. This antibody cocktail recognizes acidic (Type I or LMW) and basic (Type II or HMW) cytokeratins, with 67kDa (CK1); 64kDa (CK3); 59kDa (CK4); 58kDa (CK5); 56kDa (CK6); 55kDa (CK7); 52kDa (CK8); 56.5kDa (CK10); 53kDa (CK13); 50kDa (CK14); 50kDa (CK15); 48kDa (CK16); 46kDa (CK17); 45kDa (CK18), 40kDa (CK19) and 46kDa (CK20). This antibody is a broad-spectrum anti pan-cytokeratin antibody cocktail, which differentiates epithelial tumors from non-epithelial tumors e.g. squamous vs. adenocarcinoma of the lung, liver carcinoma, breast cancer, and esophageal cancer. It is useful in characterizing the source of various neoplasms and to study the distribution of cytokeratin containing cells in epithelia during normal development and during the development of epithelial neoplasms.</p>
Immunogen	Recombinant fragments and/or synthetic peptides of human Cytokeratin, pan proteins (exact sequences are proprietary)
Product Application Details	
Applications	Western Blot, Flow Cytometry, Immunocytochemistry/ Immunofluorescence, Immunohistochemistry-Paraffin
Recommended Dilutions	Western Blot 0.5-2ug/ml, Flow Cytometry 0.5-1ug/million cells, Immunocytochemistry/ Immunofluorescence 1-2ug/ml, Immunohistochemistry-Paraffin 1-2ug/ml



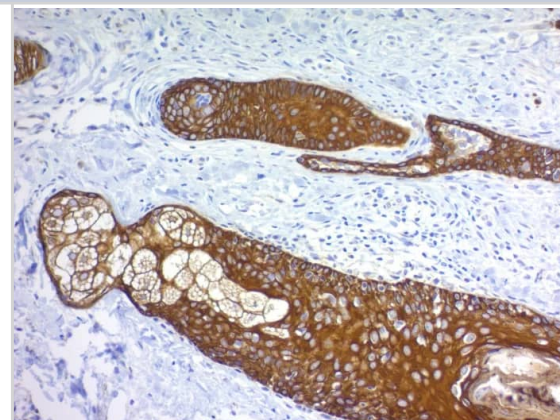
**Application Notes**

Immunohistochemistry-Paraffin: 1-2ug/ml for 30 minutes at RT. Staining of formalin-fixed tissues requires heating tissue sections in 10mM Tris with 1mM EDTA, pH 9.0, for 45 min at 95C followed by cooling at RT for 20 minutes. Optimal dilution for a specific application should be determined.

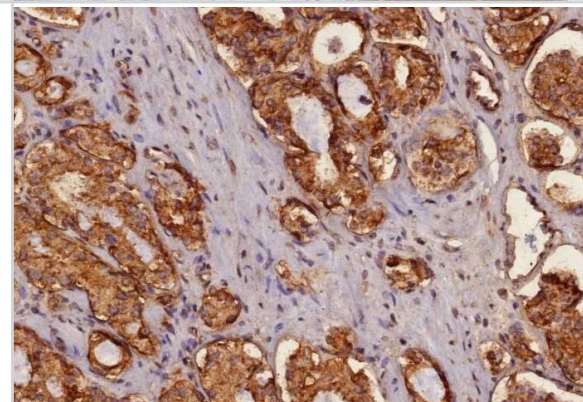
Western Blot: 0.5-2ug/ml for 2 hours at RT.

**Images**

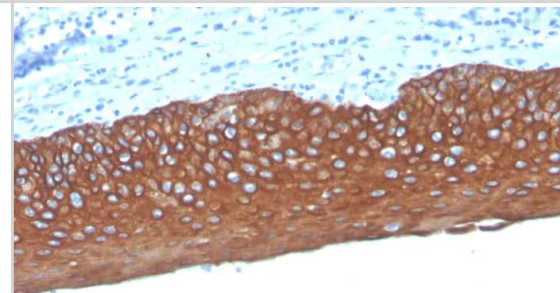
Immunohistochemistry-Paraffin: Cytokeratin, pan Antibody (MonoPoly/4999R) [NBP3-23627] - Formalin-fixed, paraffin-embedded human basal cell carcinoma stained with Cytokeratin, pan Antibody (MonoPoly/4999R)



Immunohistochemistry-Paraffin: Cytokeratin, pan Antibody (MonoPoly/4999R) [NBP3-23627] - Formalin-fixed, paraffin-embedded human prostate carcinoma stained with Cytokeratin, pan Antibody (MonoPoly/4999R)



Immunohistochemistry-Paraffin: Cytokeratin, pan Antibody (MonoPoly/4999R) [NBP3-23627] - Formalin-fixed, paraffin-embedded human tonsil stained with Cytokeratin, pan Antibody (MonoPoly/4999R)





### **Novus Biologicals USA**

10730 E. Briarwood Avenue  
Centennial, CO 80112  
USA  
Phone: 303.730.1950  
Toll Free: 1.888.506.6887  
Fax: 303.730.1966  
nb-customerservice@bio-techne.com

### **Bio-Techne Canada**

21 Canmotor Ave  
Toronto, ON M8Z 4E6  
Canada  
Phone: 905.827.6400  
Toll Free: 855.668.8722  
Fax: 905.827.6402  
canada.inquires@bio-techne.com

### **Bio-Techne Ltd**

19 Barton Lane  
Abingdon Science Park  
Abingdon, OX14 3NB, United Kingdom  
Phone: (44) (0) 1235 529449  
Free Phone: 0800 37 34 15  
Fax: (44) (0) 1235 533420  
info.EMEA@bio-techne.com

### **General Contact Information**

www.novusbio.com  
Technical Support: nb-technical@bio-techne.com  
Orders: nb-customerservice@bio-techne.com  
General: novus@novusbio.com

### **Products Related to NBP3-23627-100ug**

---

HAF008	Goat anti-Rabbit IgG Secondary Antibody [HRP]
NB7160	Goat anti-Rabbit IgG (H+L) Secondary Antibody [HRP]
DNST0	Endostatin [HRP]
MAB1455	Albumin Antibody (188835) [Unconjugated] - Serum

---

### **Limitations**

This product is for research use only and is not approved for use in humans or in clinical diagnosis. Primary Antibodies are guaranteed for 1 year from date of receipt.

For more information on our 100% guarantee, please visit [www.novusbio.com/guarantee](http://www.novusbio.com/guarantee)

Earn gift cards/discounts by submitting a review: [www.novusbio.com/reviews/submit/NBP3-23627](http://www.novusbio.com/reviews/submit/NBP3-23627)

Earn gift cards/discounts by submitting a publication using this product:  
[www.novusbio.com/publications](http://www.novusbio.com/publications)

