

Product Datasheet

CLASP2 Antibody (KT68) - BSA Free NBP3-23220

Unit Size: 0.1 ml

Store at 4C short term. Aliquot and store at -20C long term. Avoid freeze-thaw cycles.

www.novusbio.com



technical@novusbio.com

Protocols, Publications, Related Products, Reviews, Research Tools and Images at:
www.novusbio.com/NBP3-23220

Updated 3/3/2025 v.20.1

Earn rewards for product
reviews and publications.

Submit a publication at www.novusbio.com/publications

Submit a review at www.novusbio.com/reviews/destination/NBP3-23220



NBP3-23220

CLASP2 Antibody (KT68) - BSA Free

Product Information	
Unit Size	0.1 ml
Concentration	Please see the vial label for concentration. If unlisted please contact technical services.
Storage	Store at 4C short term. Aliquot and store at -20C long term. Avoid freeze-thaw cycles.
Clonality	Monoclonal
Clone	KT68
Preservative	0.05% Sodium Azide
Isotype	IgG2b
Purity	Protein G purified
Buffer	PBS
Target Molecular Weight	160 kDa

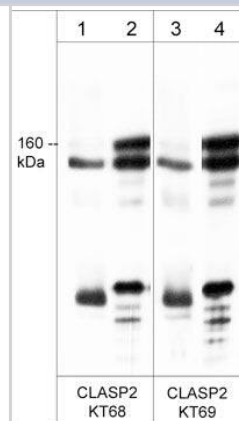
Product Description	
Description	Recommended that the undiluted antibody be aliquoted into smaller working volumes (10-30 uL/vial depending on usage).
Host	Rat
Gene ID	23122
Gene Symbol	CLASP2
Species	Human, Mouse, Rat
Specificity/Sensitivity	The antibody detects a 160 kDa doublet corresponding to the molecular mass of CLASP2 on SDS-PAGE immunoblots of human HeLa, mouse brain, and rat PC12 cells. The antibody also detects CLASP2 by immunocytochemistry in HeLa and A431 cells.
Immunogen	Clone KT68 was generated from a GST fusion protein containing the N-terminus of mouse CLASP2. This sequence is highly conserved in human and rat CLASP2, and has low homology to CLASP1. [UniProt# Q8BRT1]

Product Application Details	
Applications	Western Blot, Immunocytochemistry/ Immunofluorescence
Recommended Dilutions	Western Blot 1:1000, Immunocytochemistry/ Immunofluorescence 1:200

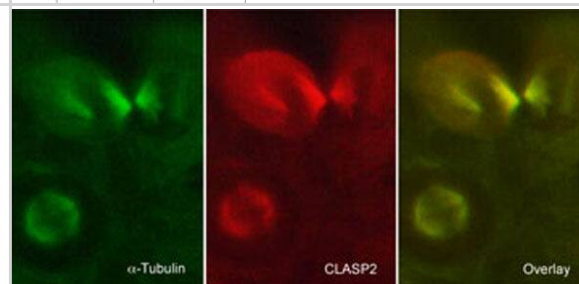


Images

Western Blot: CLASP2 Antibody (KT68) [NBP3-23220] - Western blot of CLASP2 in mouse brain (lanes 1 & 3) and rat PC12 cells (lanes 2 & 4). The blots were probed with rat monoclonals NBP3-23220 anti-CLASP2 (clone KT68) (lanes 1 & 2) and anti-CLASP2 (clone KT69) (lanes 3 & 4). The antibodies were used at a dilution of 1:500.



Immunocytochemistry/Immunofluorescence: CLASP2 Antibody (KT68) [NBP3-23220] - Immunocytochemical labeling of CLASP2 in paraformaldehyde-fixed and NP40-permeabilized A431 cells. The cells were dual labeled with mouse monoclonal anti-alpha Tubulin (NBP3-23258) (left) and rat monoclonal anti-CLASP2 (NBP3-23220) (middle). The antibodies were detected using either goat anti-mouse: DyLight(R) 488 or goat anti-Rat: DyLight(R) 594.





Novus Biologicals USA

10730 E. Briarwood Avenue
Centennial, CO 80112
USA
Phone: 303.730.1950
Toll Free: 1.888.506.6887
Fax: 303.730.1966
nb-customerservice@bio-techne.com

Bio-Techne Canada

21 Canmotor Ave
Toronto, ON M8Z 4E6
Canada
Phone: 905.827.6400
Toll Free: 855.668.8722
Fax: 905.827.6402
canada.inquires@bio-techne.com

Bio-Techne Ltd

19 Barton Lane
Abingdon Science Park
Abingdon, OX14 3NB, United Kingdom
Phone: (44) (0) 1235 529449
Free Phone: 0800 37 34 15
Fax: (44) (0) 1235 533420
info.EMEA@bio-techne.com

General Contact Information

www.novusbio.com
Technical Support: nb-technical@bio-techne.com
Orders: nb-customerservice@bio-techne.com
General: novus@novusbio.com

Products Related to NBP3-23220

HAF005	Goat anti-Rat IgG Secondary Antibody [HRP]
F0105B	Goat anti-Rat IgG Secondary Antibody [Phycoerythrin]
DDXCR03	Rat IgG2b Isotype Control
H00023122-P01-10ug	Recombinant Human CLASP2 GST (N-Term) Protein

Limitations

This product is for research use only and is not approved for use in humans or in clinical diagnosis. Primary Antibodies are guaranteed for 1 year from date of receipt.

For more information on our 100% guarantee, please visit www.novusbio.com/guarantee

Earn gift cards/discounts by submitting a review: www.novusbio.com/reviews/submit/NBP3-23220

Earn gift cards/discounts by submitting a publication using this product:
www.novusbio.com/publications

