

Product Datasheet

Ceruloplasmin Antibody (SR1152) NBP3-22625-100ul

Unit Size: 100 ul

Store at 4C short term. Aliquot and store at -20C long term. Avoid freeze-thaw cycles.

www.novusbio.com



technical@novusbio.com

Protocols, Publications, Related Products, Reviews, Research Tools and Images at:
www.novusbio.com/NBP3-22625

Updated 4/15/2024 v.20.1

Earn rewards for product
reviews and publications.

Submit a publication at www.novusbio.com/publications

Submit a review at www.novusbio.com/reviews/destination/NBP3-22625



NBP3-22625-100ul

Ceruloplasmin Antibody (SR1152)

Product Information

| | |
|--------------------------------|---|
| Unit Size | 100 ul |
| Concentration | Please see the vial label for concentration. If unlisted please contact technical services. |
| Storage | Store at 4C short term. Aliquot and store at -20C long term. Avoid freeze-thaw cycles. |
| Clonality | Monoclonal |
| Clone | SR1152 |
| Preservative | 0.02% Sodium Azide |
| Isotype | IgG |
| Purity | Affinity purified |
| Buffer | PBS, pH 7.4, 150mM NaCl, 50% glycerol. |
| Target Molecular Weight | 140 kDa |

Product Description

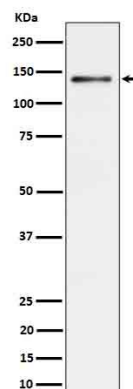
| | |
|--------------------------------|--|
| Host | Rabbit |
| Gene Symbol | CP |
| Species | Human, Rat |
| Specificity/Sensitivity | Detects endogenous levels of total Ceruloplasmin |
| Immunogen | A synthesized peptide derived from human Ceruloplasmin (Uniprot #: P00450) |

Product Application Details

| | |
|------------------------------|---------------------------|
| Applications | Western Blot |
| Recommended Dilutions | Western Blot 1:500-1:2000 |

Images

Western Blot: Ceruloplasmin Antibody (SR1152) [NBP3-22625] - Western blot analysis using NBP3-22625 in Rat liver cell lysate.





Novus Biologicals USA

10730 E. Briarwood Avenue
Centennial, CO 80112
USA
Phone: 303.730.1950
Toll Free: 1.888.506.6887
Fax: 303.730.1966
nb-customerservice@bio-techne.com

Bio-Techne Canada

21 Canmotor Ave
Toronto, ON M8Z 4E6
Canada
Phone: 905.827.6400
Toll Free: 855.668.8722
Fax: 905.827.6402
canada.inquires@bio-techne.com

Bio-Techne Ltd

19 Barton Lane
Abingdon Science Park
Abingdon, OX14 3NB, United Kingdom
Phone: (44) (0) 1235 529449
Free Phone: 0800 37 34 15
Fax: (44) (0) 1235 533420
info.EMEA@bio-techne.com

General Contact Information

www.novusbio.com
Technical Support: nb-technical@bio-techne.com
Orders: nb-customerservice@bio-techne.com
General: novus@novusbio.com

Products Related to NBP3-22625-100ul

| | |
|------------|---|
| HAF008 | Goat anti-Rabbit IgG Secondary Antibody [HRP] |
| NB7160 | Goat anti-Rabbit IgG (H+L) Secondary Antibody [HRP] |
| NBP2-24891 | Rabbit IgG Isotype Control |
| NBP2-12553 | Ceruloplasmin Native Protein |

Limitations

This product is for research use only and is not approved for use in humans or in clinical diagnosis. Primary Antibodies are guaranteed for 1 year from date of receipt.

For more information on our 100% guarantee, please visit www.novusbio.com/guarantee

Earn gift cards/discounts by submitting a review: www.novusbio.com/reviews/submit/NBP3-22625

Earn gift cards/discounts by submitting a publication using this product:
www.novusbio.com/publications

