

# Product Datasheet

## RPL7A Antibody (SR1517)

### NBP3-21877-100ul

Unit Size: 100 ul

Store at 4C short term. Aliquot and store at -20C long term. Avoid freeze-thaw cycles.

[www.novusbio.com](http://www.novusbio.com)



[technical@novusbio.com](mailto:technical@novusbio.com)

Protocols, Publications, Related Products, Reviews, Research Tools and Images at:  
[www.novusbio.com/NBP3-21877](http://www.novusbio.com/NBP3-21877)

Updated 4/15/2024 v.20.1

Earn rewards for product reviews and publications.

Submit a publication at [www.novusbio.com/publications](http://www.novusbio.com/publications)

Submit a review at [www.novusbio.com/reviews/destination/NBP3-21877](http://www.novusbio.com/reviews/destination/NBP3-21877)



**NBP3-21877-100ul**

RPL7A Antibody (SR1517)

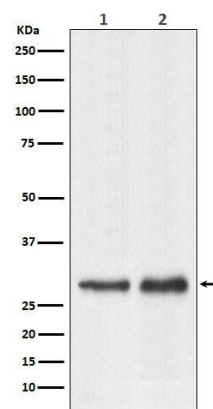
| Product Information     |   |
|-------------------------|---|
| Unit Size               | 100 ul  |
| Concentration           | Please see the vial label for concentration. If unlisted please contact technical services. |
| Storage                 | Store at 4C short term. Aliquot and store at -20C long term. Avoid freeze-thaw cycles.      |
| Clonality               | Monoclonal  |
| Clone                   | SR1517  |
| Preservative            | 0.02% Sodium Azide  |
| Isotype                 | IgG   |
| Purity                  | Affinity purified   |
| Buffer                  | PBS, pH 7.4, 150mM NaCl, 50% glycerol.  |
| Target Molecular Weight | 30 kDa  |

| Product Description     |  |
|-------------------------|--|
| Host                    | Rabbit   |
| Gene Symbol             | RPL7A  |
| Species                 | Human, Mouse, Rat  |
| Specificity/Sensitivity | Detects endogenous levels of total RPL7A                           |
| Immunogen               | A synthesized peptide derived from human RPL7A (Uniprot #: P62424) |

| Product Application Details |   |
|-----------------------------|---|
| Applications                | Western Blot, Immunohistochemistry                          |
| Recommended Dilutions       | Western Blot 1:1000-1:5000, Immunohistochemistry 1:50-1:200 |

**Images**

Western Blot: RPL7A Antibody (SR1517) [NBP3-21877] - Western blot analysis using NBP3-21877 in (1) HeLa cell lysate; (2) Raw264.7 cell lysate.





### Novus Biologicals USA

10730 E. Briarwood Avenue  
Centennial, CO 80112  
USA  
Phone: 303.730.1950  
Toll Free: 1.888.506.6887  
Fax: 303.730.1966  
nb-customerservice@bio-techne.com

### Bio-Techne Canada

21 Canmotor Ave  
Toronto, ON M8Z 4E6  
Canada  
Phone: 905.827.6400  
Toll Free: 855.668.8722  
Fax: 905.827.6402  
canada.inquires@bio-techne.com

### Bio-Techne Ltd

19 Barton Lane  
Abingdon Science Park  
Abingdon, OX14 3NB, United Kingdom  
Phone: (44) (0) 1235 529449  
Free Phone: 0800 37 34 15  
Fax: (44) (0) 1235 533420  
info.EMEA@bio-techne.com

### General Contact Information

www.novusbio.com  
Technical Support: nb-technical@bio-techne.com  
Orders: nb-customerservice@bio-techne.com  
General: novus@novusbio.com

### Products Related to NBP3-21877-100ul

---

|                   |   |
|-------------------|---|
| HAF008            | Goat anti-Rabbit IgG Secondary Antibody [HRP]       |
| NB7160            | Goat anti-Rabbit IgG (H+L) Secondary Antibody [HRP] |
| NBP2-24891        | Rabbit IgG Isotype Control                          |
| NBP2-51895-0.05mg | Recombinant Human RPL7A His Protein                 |

---

### Limitations

This product is for research use only and is not approved for use in humans or in clinical diagnosis. Primary Antibodies are guaranteed for 1 year from date of receipt.

For more information on our 100% guarantee, please visit [www.novusbio.com/guarantee](http://www.novusbio.com/guarantee)

Earn gift cards/discounts by submitting a review: [www.novusbio.com/reviews/submit/NBP3-21877](http://www.novusbio.com/reviews/submit/NBP3-21877)

Earn gift cards/discounts by submitting a publication using this product:  
[www.novusbio.com/publications](http://www.novusbio.com/publications)

