

# Product Datasheet

## LSD1 Antibody NBP3-18684

Unit Size: 50 ug

Store at -20C short term. Aliquot and store at -80C long term. Avoid freeze-thaw cycles.

[www.novusbio.com](http://www.novusbio.com)



[technical@novusbio.com](mailto:technical@novusbio.com)

Protocols, Publications, Related Products, Reviews, Research Tools and Images at:  
[www.novusbio.com/NBP3-18684](http://www.novusbio.com/NBP3-18684)

Updated 8/6/2023 v.20.1

Earn rewards for product  
reviews and publications.

Submit a publication at [www.novusbio.com/publications](http://www.novusbio.com/publications)

Submit a review at [www.novusbio.com/reviews/destination/NBP3-18684](http://www.novusbio.com/reviews/destination/NBP3-18684)



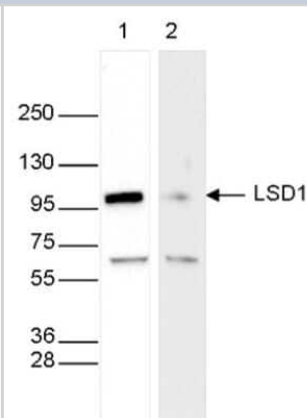
**NBP3-18684**

## LSD1 Antibody

Product Information	
Unit Size	50 ug
Concentration	2.2 mg/ml
Storage	Store at -20C short term. Aliquot and store at -80C long term. Avoid freeze-thaw cycles.
Clonality	Polyclonal
Preservative	0.05% Sodium Azide and 0.05% ProClin 300
Purity	Affinity purified
Buffer	PBS
Product Description	
Host	Rabbit
Gene ID	23028
Gene Symbol	KDM1A
Species	Human
Immunogen	Polyclonal antibody raised in rabbit against human LSD1 (Lysine-specific demethylase 1), using a KLH-conjugated synthetic peptide from the inner part of the protein.
Product Application Details	
Applications	Western Blot, ELISA, Immunocytochemistry/Immunofluorescence, Immunohistochemistry, Immunohistochemistry-Paraffin, Chromatin Immunoprecipitation (ChIP), Chromatin Immunoprecipitation Sequencing
Recommended Dilutions	Western Blot 1:4000, ELISA 1:1000-1:10000, Immunohistochemistry 1:10-1:500, Immunocytochemistry/Immunofluorescence 1:200, Immunohistochemistry-Paraffin 1:200-1:500, Chromatin Immunoprecipitation (ChIP) 1 ug/ChIP, Chromatin Immunoprecipitation Sequencing 1 ug/ChIP
Application Notes	Please note that the optimal antibody amount per IP should be determined by the end-user. We recommend testing 1-5 ug per IP.

**Images**

Western Blot: LSD1 Antibody [NBP3-18684] - Figure 5. Western blot analysis using the antibody directed against LSD1. Whole cell extracts (40 ug) from HeLa cells transfected with LSD1 siRNA (lane 2) and from an untransfected control (lane 1) were analysed by Western blot using the antibody against LSD1 diluted 1:5,000 in TBS-Tween containing 5% skimmed milk. The position of the protein of interest is indicated on the right; the marker (in kDa) is shown on the left.



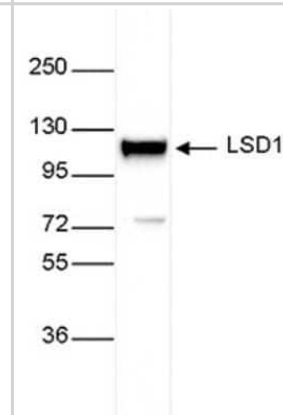
Immunocytochemistry/Immunofluorescence: LSD1 Antibody [NBP3-18684] - Figure 6. Immunofluorescence using the antibody directed against LSD1 HeLa cells were stained with the antibody against LSD1 and with DAPI. Cells were fixed with 4% formaldehyde for 10 and blocked with PBS/TX-100 containing 5% normal goat serum and 1% BSA. The cells were immunofluorescently labelled with the LSD1 antibody (left) diluted 1:200 in blocking solution followed by an anti-rabbit antibody conjugated to Alexa488. The middle panel shows staining of the nuclei with DAPI. A merge of the two stainings is shown on the right.



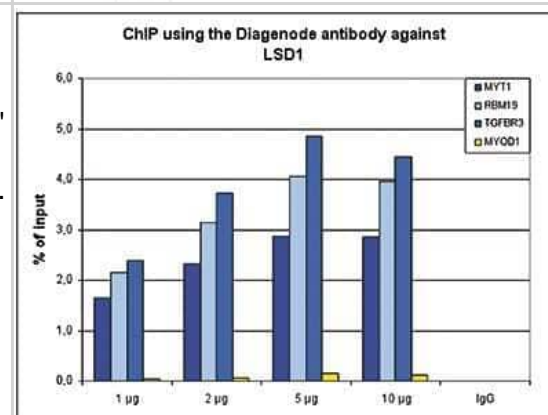
Chromatin Immunoprecipitation Sequencing: LSD1 Antibody [NBP3-18684] - Figure 2. ChIP-seq results obtained with the antibody directed against LSD1 ChIP was performed on sheared chromatin from 4,000,000 K562 cells using 1 ug of the antibody against LSD1 as described above. The IPd DNA was subsequently analysed on an Illumina HiSeq. Library preparation, cluster generation and sequencing were performed according to the manufacturers instructions. The 50 bp tags were aligned to the human genome using the BWA algorithm. Figure 2 shows the peak distribution along the complete sequence and a 600 kb region of the X-chromosome (figure 2A and B) and in three regions surrounding the MYT1, RBM19 and TGFBR3 positive control genes, respectively (figure 2C, D and E). The position of the amplicon used for ChIP-qPCR is indicated by an arrow.



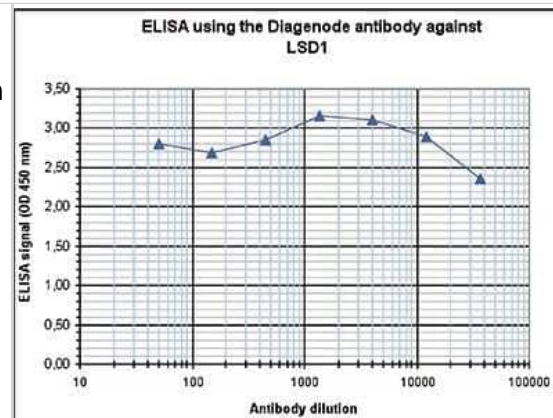
Western Blot: LSD1 Antibody [NBP3-18684] - Figure 4. Western blot analysis using the antibody directed against LSD1 Western blot was performed using nuclear extracts from HeLa cells (40 ug) and the antibody against LSD1 diluted 1:4,000 in TBS- Tween containing 5% skimmed milk. The molecular weight marker (in kDa) is shown on the left. The location of the protein of interest is indicated on the right.



Chromatin Immunoprecipitation Sequencing: LSD1 Antibody [NBP3-18684] - Figure 1. ChIP results obtained with the antibody directed against LSD1 ChIP was performed with the antibody against LSD1 on sheared chromatin from 4,000,000 K562 cells using the "iDeal ChIP-seq" kit .. An antibody titration consisting of 1, 2, 5 and 10 ug per ChIP experiment was analysed. IgG (2 ug/IP) was used as negative IP control. QPCR was performed with primers for specific regions in the MYT1, RBM19, and TGFBR3 genes, used as positive controls, and for the MYOD1 gene, used as negative control. Figure 1 shows the recovery, expressed as a % of input (the relative amount of immunoprecipitated DNA compared to input DNA after qPCR analysis).



ELISA: LSD1 Antibody [NBP3-18684] - Figure 3. Determination of the antibody titer To determine the titer of the antibody, an ELISA was performed using a serial dilution of the antibody directed against LSD1 in antigen coated wells. By plotting the absorbance against the antibody dilution (Figure 3), the titer of the antibody was estimated to be 1:176,000.





### **Novus Biologicals USA**

10730 E. Briarwood Avenue  
Centennial, CO 80112  
USA

Phone: 303.730.1950  
Toll Free: 1.888.506.6887  
Fax: 303.730.1966  
novus@novusbio.com

### **Bio-Techne Canada**

21 Canmotor Ave  
Toronto, ON M8Z 4E6  
Canada

Phone: 905.827.6400  
Toll Free: 855.668.8722  
Fax: 905.827.6402  
canada.inquires@bio-techne.com

### **Bio-Techne Ltd**

19 Barton Lane  
Abingdon Science Park  
Abingdon, OX14 3NB, United Kingdom  
Phone: (44) (0) 1235 529449  
Free Phone: 0800 37 34 15  
Fax: (44) (0) 1235 533420  
info.EMEA@bio-techne.com

### **General Contact Information**

www.novusbio.com  
Technical Support: technical@novusbio.com  
Orders: orders@novusbio.com  
General: novus@novusbio.com

### **Products Related to NBP3-18684**

---

HAF008	Goat anti-Rabbit IgG Secondary Antibody [HRP]
NB7156	Goat anti-Rabbit IgG (H+L) Secondary Antibody
H00023028-P01-10ug	Recombinant Human LSD1 GST (N-Term) Protein
H00023028-Q01-10ug	Recombinant Human LSD1 GST (N-Term) Protein

---

### **Limitations**

This product is for research use only and is not approved for use in humans or in clinical diagnosis. Primary Antibodies are guaranteed for 1 year from date of receipt.

For more information on our 100% guarantee, please visit [www.novusbio.com/guarantee](http://www.novusbio.com/guarantee)

Earn gift cards/discounts by submitting a review: [www.novusbio.com/reviews/submit/NBP3-18684](http://www.novusbio.com/reviews/submit/NBP3-18684)

Earn gift cards/discounts by submitting a publication using this product:  
[www.novusbio.com/publications](http://www.novusbio.com/publications)

