

Product Datasheet

KMT2B Antibody NBP3-18667-100ul

Unit Size: 100 ul

Store at -20C short term. Aliquot and store at -80C long term. Avoid freeze-thaw cycles.

www.novusbio.com



technical@novusbio.com

Protocols, Publications, Related Products, Reviews, Research Tools and Images at:
www.novusbio.com/NBP3-18667

Updated 9/9/2025 v.20.1

Earn rewards for product
reviews and publications.

Submit a publication at www.novusbio.com/publications

Submit a review at www.novusbio.com/reviews/destination/NBP3-18667



NBP3-18667-100ul**KMT2B Antibody**

Product Information	
Unit Size	100 ul
Concentration	Please see the vial label for concentration. If unlisted please contact technical services.
Storage	Store at -20C short term. Aliquot and store at -80C long term. Avoid freeze-thaw cycles.
Clonality	Polyclonal
Preservative	0.05% Sodium Azide
Purity	Whole Antiserum
Buffer	Whole antiserum

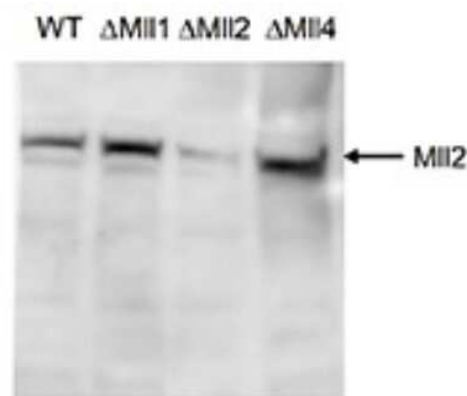
Product Description	
Description	Novus Biologicals Rabbit KMT2B Antibody (NBP3-18667) is a polyclonal antibody validated for use in WB and ELISA. All Novus Biologicals antibodies are covered by our 100% guarantee.
Host	Rabbit
Gene ID	9757
Gene Symbol	KMT2B
Species	Mouse
Immunogen	Polyclonal antibody raised in rabbit against mouse KMT2B (Myeloid/lymphoid or mixed-lineage leukemia protein 2), using two KLH-conjugated synthetic peptides containing an amino acid sequence from the N-terminal and one peptide containing a sequence from the central part of the protein, respectively.

Product Application Details	
Applications	Western Blot, ELISA
Recommended Dilutions	Western Blot 1:500, ELISA 1:200-1:2000

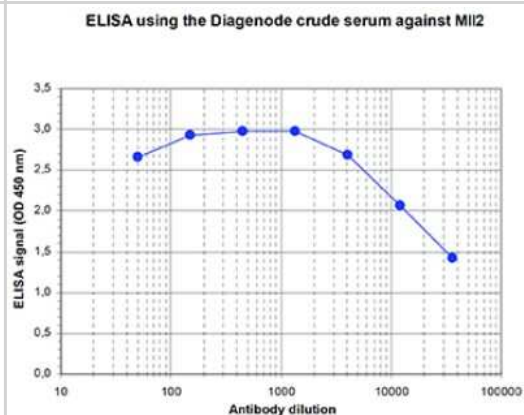


Images

Western Blot: KMT2B Antibody [NBP3-18667] - Figure 2. Western blot analysis using the antibody directed against KMT2B. Western blot was performed on whole cell lysates from mouse embryonic stem cells (E14Tg2a) with the antibody against mouse KMT2B, diluted 1:500 in BSA/PBS-Tween. The location of the N-terminal fragment of KMT2B is indicated on the right (270 kDa). Cells homozygous for the targeted conditional *mll2* allele (delta KMT2B) show a dramatic reduction of KMT2B protein after partial recombination, whereas KMT2B protein was detected in deltaMll1, deltaMll4 and WT E14Tg2a cells.



ELISA: KMT2B Antibody [NBP3-18667] - Figure 1. Determination of the titer. To determine the titer, an ELISA was performed using a serial dilution of the antibody directed against mouse KMT2B. The wells were coated with the peptides used for immunisation of the rabbit. By plotting the absorbance against the antibody dilution (Figure 1), the titer of the antibody was estimated to be 1:32,500.





Novus Biologicals USA

10730 E. Briarwood Avenue
Centennial, CO 80112
USA
Phone: 303.730.1950
Toll Free: 1.888.506.6887
Fax: 303.730.1966
nb-customerservice@bio-techne.com

Bio-Techne Canada

21 Canmotor Ave
Toronto, ON M8Z 4E6
Canada
Phone: 905.827.6400
Toll Free: 855.668.8722
Fax: 905.827.6402
canada.inquires@bio-techne.com

Bio-Techne Ltd

19 Barton Lane
Abingdon Science Park
Abingdon, OX14 3NB, United Kingdom
Phone: (44) (0) 1235 529449
Free Phone: 0800 37 34 15
Fax: (44) (0) 1235 533420
info.EMEA@bio-techne.com

General Contact Information

www.novusbio.com
Technical Support: nb-technical@bio-techne.com
Orders: nb-customerservice@bio-techne.com
General: novus@novusbio.com

Products Related to NBP3-18667-100ul

NBP2-33376H	Blue Marker Antibody (6F4-F6) [HRP]
HAF008	Goat anti-Rabbit IgG Secondary Antibody [HRP]
NB7160	Goat anti-Rabbit IgG (H+L) Secondary Antibody [HRP]
NB110-58358	YAP1 Antibody - BSA Free

Limitations

This product is for research use only and is not approved for use in humans or in clinical diagnosis. Primary Antibodies are guaranteed for 1 year from date of receipt.

For more information on our 100% guarantee, please visit www.novusbio.com/guarantee

Earn gift cards/discounts by submitting a review: www.novusbio.com/reviews/submit/NBP3-18667

Earn gift cards/discounts by submitting a publication using this product:
www.novusbio.com/publications

