

Product Datasheet

MBD2 Antibody **NBP3-18666-100ul**

Unit Size: 100 ul

Store at -20C short term. Aliquot and store at -80C long term. Avoid freeze-thaw cycles.

www.novusbio.com



technical@novusbio.com

Protocols, Publications, Related Products, Reviews, Research Tools and Images at:
www.novusbio.com/NBP3-18666

Updated 4/21/2024 v.20.1

**Earn rewards for product
reviews and publications.**

Submit a publication at www.novusbio.com/publications

Submit a review at www.novusbio.com/reviews/destination/NBP3-18666



NBP3-18666-100ul**MBD2 Antibody****Product Information**

Unit Size	100 ul
Concentration	Please see the vial label for concentration. If unlisted please contact technical services.
Storage	Store at -20C short term. Aliquot and store at -80C long term. Avoid freeze-thaw cycles.
Clonality	Polyclonal
Preservative	0.05% Sodium Azide
Purity	Whole Antiserum
Buffer	Whole antiserum

Product Description

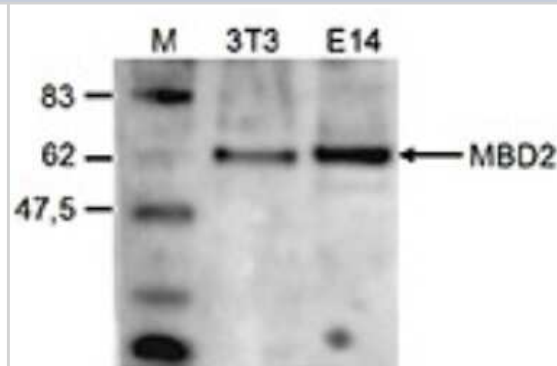
Host	Rabbit
Gene Symbol	MBD2
Species	Mouse
Immunogen	Polyclonal antibody raised in rabbit against mouse MBD2 (methyl-CpG binding domain protein 2), using a KLH-conjugated synthetic peptide containing an amino acid sequence from the central part of the protein (1).

Product Application Details

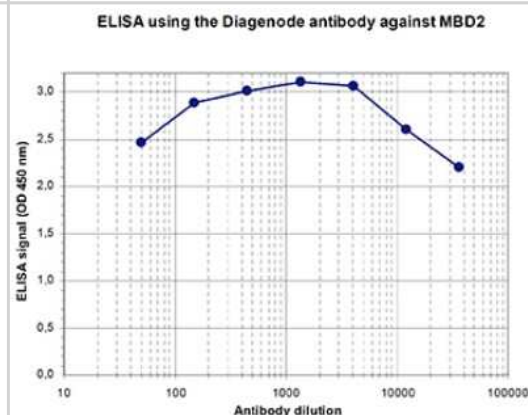
Applications	Western Blot, ELISA
Recommended Dilutions	Western Blot 1:500, ELISA 1:1000-1:4000

Images

Western Blot: MBD2 Antibody [NBP3-18666] - Figure 2. Western blot analysis using the antibody directed against MBD2 (1) Western blot was performed on nuclear extracts from mouse fibroblastst (NIH3T3) and embryonic stem cells (E14Tg2a) with the antibody against mouse MBD2 , diluted 1:500 in BSA/PBS- Tween. The molecular weight marker (M, in kDa) is shown on the left; the location of the protein of interest is indicated on the right.



ELISA: MBD2 Antibody [NBP3-18666] - Figure 1. Determination of the titer To determine the titer, an ELISA was performed using a serial dilution of the antibody directed against mouse MBD2 . By plotting the absorbance against the antibody dilution (Figure 1), the titer of the antibody was estimated to be 1:185,000.





Novus Biologicals USA

10730 E. Briarwood Avenue
Centennial, CO 80112
USA
Phone: 303.730.1950
Toll Free: 1.888.506.6887
Fax: 303.730.1966
nb-customerservice@bio-techne.com

Bio-Techne Canada

21 Canmotor Ave
Toronto, ON M8Z 4E6
Canada
Phone: 905.827.6400
Toll Free: 855.668.8722
Fax: 905.827.6402
canada.inquires@bio-techne.com

Bio-Techne Ltd

19 Barton Lane
Abingdon Science Park
Abingdon, OX14 3NB, United Kingdom
Phone: (44) (0) 1235 529449
Free Phone: 0800 37 34 15
Fax: (44) (0) 1235 533420
info.EMEA@bio-techne.com

General Contact Information

www.novusbio.com
Technical Support: nb-technical@bio-techne.com
Orders: nb-customerservice@bio-techne.com
General: novus@novusbio.com

Products Related to NBP3-18666-100ul

HAF008	Goat anti-Rabbit IgG Secondary Antibody [HRP]
NB7160	Goat anti-Rabbit IgG (H+L) Secondary Antibody [HRP]
NBP2-56565PEP	MBD2 Recombinant Protein Antigen
NBP2-56638PEP	MBD2 Recombinant Protein Antigen

Limitations

This product is for research use only and is not approved for use in humans or in clinical diagnosis. Primary Antibodies are guaranteed for 1 year from date of receipt.

For more information on our 100% guarantee, please visit www.novusbio.com/guarantee

Earn gift cards/discounts by submitting a review: www.novusbio.com/reviews/submit/NBP3-18666

Earn gift cards/discounts by submitting a publication using this product:
www.novusbio.com/publications

