

Product Datasheet

SMCX Antibody NBP3-18659-100ul

Unit Size: 100 ul

Store at -20C short term. Aliquot and store at -80C long term. Avoid freeze-thaw cycles.

www.novusbio.com



technical@novusbio.com

Protocols, Publications, Related Products, Reviews, Research Tools and Images at:
www.novusbio.com/NBP3-18659

Updated 4/21/2024 v.20.1

Earn rewards for product
reviews and publications.

Submit a publication at www.novusbio.com/publications

Submit a review at www.novusbio.com/reviews/destination/NBP3-18659



NBP3-18659-100ul**SMCX Antibody****Product Information**

Unit Size	100 ul
Concentration	Please see the vial label for concentration. If unlisted please contact technical services.
Storage	Store at -20C short term. Aliquot and store at -80C long term. Avoid freeze-thaw cycles.
Clonality	Polyclonal
Preservative	0.05% Sodium Azide
Purity	Whole Antiserum
Buffer	Whole antiserum

Product Description

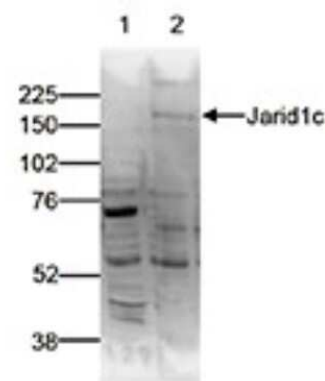
Host	Rabbit
Gene Symbol	KDM5C
Species	Human, Mouse
Immunogen	Polyclonal antibody raised in rabbit against mouse SMCX (jumonji, AT rich interactive domain 1C), using 3 KLH-conjugated synthetic peptides containing sequences from the inner part of the protein.

Product Application Details

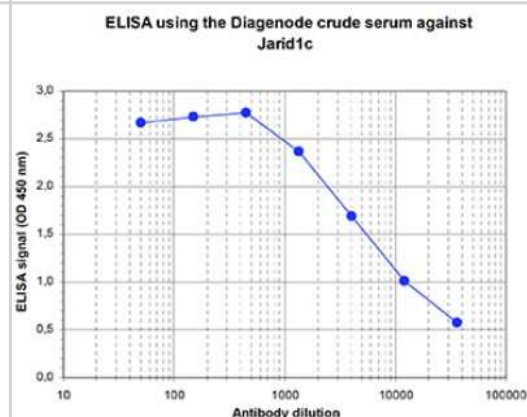
Applications	Western Blot, ELISA
Recommended Dilutions	Western Blot 1:1000, ELISA 1:500

Images

Western Blot: SMCX Antibody [NBP3-18659] - Figure 2. Western blot analysis using the antibody directed against SMCX. Nuclear extracts of HeLa cells (40 ug) were analysed by Western blot using the antibody against SMCX and with the preimmune serum (lane 1) diluted 1:1,000 in TBS-Tween containing 5% skimmed milk. The position of the protein of interest is indicated on the right (expected size: 175 kDa); the marker (in kDa) is shown on the left. Figure 2 shows that the additional bands at approximately 55 and 80 kDa are also present in the preimmune serum.



ELISA: SMCX Antibody [NBP3-18659] - Figure 1. Determination of the titer. To determine the titer, an ELISA was performed using a serial dilution of the antibody directed against SMCX. The plates were coated with the peptides used for immunization of the rabbit. By plotting the absorbance against the antibody dilution (Figure 1), the titer of the antibody was estimated to be 1:7,000.





Novus Biologicals USA

10730 E. Briarwood Avenue
Centennial, CO 80112
USA
Phone: 303.730.1950
Toll Free: 1.888.506.6887
Fax: 303.730.1966
nb-customerservice@bio-techne.com

Bio-Techne Canada

21 Canmotor Ave
Toronto, ON M8Z 4E6
Canada
Phone: 905.827.6400
Toll Free: 855.668.8722
Fax: 905.827.6402
canada.inquires@bio-techne.com

Bio-Techne Ltd

19 Barton Lane
Abingdon Science Park
Abingdon, OX14 3NB, United Kingdom
Phone: (44) (0) 1235 529449
Free Phone: 0800 37 34 15
Fax: (44) (0) 1235 533420
info.EMEA@bio-techne.com

General Contact Information

www.novusbio.com
Technical Support: nb-technical@bio-techne.com
Orders: nb-customerservice@bio-techne.com
General: novus@novusbio.com

Products Related to NBP3-18659-100ul

HAF008	Goat anti-Rabbit IgG Secondary Antibody [HRP]
NB7160	Goat anti-Rabbit IgG (H+L) Secondary Antibody [HRP]
NBP2-55009PEP	SMCX Recombinant Protein Antigen
NBP2-55541PEP	SMCX Recombinant Protein Antigen

Limitations

This product is for research use only and is not approved for use in humans or in clinical diagnosis. Primary Antibodies are guaranteed for 1 year from date of receipt.

For more information on our 100% guarantee, please visit www.novusbio.com/guarantee

Earn gift cards/discounts by submitting a review: www.novusbio.com/reviews/submit/NBP3-18659

Earn gift cards/discounts by submitting a publication using this product:
www.novusbio.com/publications

