

Product Datasheet

MBD4 Antibody **NBP3-18657-100ul**

Unit Size: 100 ul

Store at -20C short term. Aliquot and store at -80C long term. Avoid freeze-thaw cycles.

www.novusbio.com



technical@novusbio.com

Protocols, Publications, Related Products, Reviews, Research Tools and Images at:
www.novusbio.com/NBP3-18657

Updated 9/9/2025 v.20.1

**Earn rewards for product
reviews and publications.**

Submit a publication at www.novusbio.com/publications

Submit a review at www.novusbio.com/reviews/destination/NBP3-18657



NBP3-18657-100ul**MBD4 Antibody**

Product Information	
Unit Size	100 ul
Concentration	Please see the vial label for concentration. If unlisted please contact technical services.
Storage	Store at -20C short term. Aliquot and store at -80C long term. Avoid freeze-thaw cycles.
Clonality	Polyclonal
Preservative	0.05% Sodium Azide
Purity	Whole Antiserum
Buffer	Whole antiserum

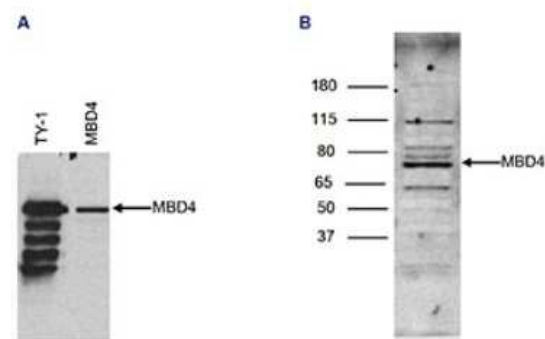
Product Description	
Description	Novus Biologicals Rabbit MBD4 Antibody (NBP3-18657) is a polyclonal antibody validated for use in WB and ELISA. All Novus Biologicals antibodies are covered by our 100% guarantee.
Host	Rabbit
Gene ID	8930
Gene Symbol	MBD4
Species	Human
Immunogen	Polyclonal antibody raised in rabbit against human MBD4 (Methyl-CpG-binding domain protein 4), using three different KLH-conjugated synthetic peptides.

Product Application Details	
Applications	Western Blot, ELISA
Recommended Dilutions	Western Blot 1:2000, ELISA 1:100-1:1000

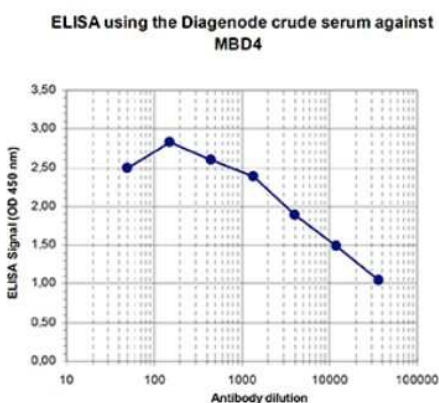


Images

Western Blot: MBD4 Antibody [NBP3-18657] - Figure 2. Western blot analysis using the antibody directed against MBD4 Figure 2A: Human osteosarcoma cells (U2OS) were transfected with an expression vector for TY1-tagged MBD4. The presence of TY1-MBD4 in the cell lysates was demonstrated by western blot analysis with the antibody against the TY1-tag (lane 1) and with the antibody against MBD4 (lane 2), diluted 1:2,000 in TBST containing 3% milk powder. Figure 2B: Western blot was performed on nuclear extracts from the U937 human leukemic monocyte lymphoma cell line (40 ug) with the antibody against MBD4, diluted 1:2,000 in TBST containing 3% milk powder. A molecular weight marker (in kDa) is shown on the left. The location of the protein of interest is indicated on the right.



ELISA: MBD4 Antibody [NBP3-18657] - Figure 1. Determination of the titer To determine the titer, an ELISA was performed using a serial dilution of the antibody directed against human MBD4 in antigen coated wells. The wells were coated with the peptides used for immunisation of the rabbit. By plotting the absorbance against the antibody dilution (Figure 1), the titer of the antibody was estimated to be 1:15,000.





Novus Biologicals USA

10730 E. Briarwood Avenue
Centennial, CO 80112
USA
Phone: 303.730.1950
Toll Free: 1.888.506.6887
Fax: 303.730.1966
nb-customerservice@bio-techne.com

Bio-Techne Canada

21 Canmotor Ave
Toronto, ON M8Z 4E6
Canada
Phone: 905.827.6400
Toll Free: 855.668.8722
Fax: 905.827.6402
canada.inquires@bio-techne.com

Bio-Techne Ltd

19 Barton Lane
Abingdon Science Park
Abingdon, OX14 3NB, United Kingdom
Phone: (44) (0) 1235 529449
Free Phone: 0800 37 34 15
Fax: (44) (0) 1235 533420
info.EMEA@bio-techne.com

General Contact Information

www.novusbio.com
Technical Support: nb-technical@bio-techne.com
Orders: nb-customerservice@bio-techne.com
General: novus@novusbio.com

Products Related to NBP3-18657-100ul

HAF008	Goat anti-Rabbit IgG Secondary Antibody [HRP]
NB7160	Goat anti-Rabbit IgG (H+L) Secondary Antibody [HRP]
NBP1-91189PEP	MBD4 Antibody Blocking Peptide
DCDL40	CD40 Ligand/TNFSF5 [HRP]

Limitations

This product is for research use only and is not approved for use in humans or in clinical diagnosis. Primary Antibodies are guaranteed for 1 year from date of receipt.

For more information on our 100% guarantee, please visit www.novusbio.com/guarantee

Earn gift cards/discounts by submitting a review: www.novusbio.com/reviews/submit/NBP3-18657

Earn gift cards/discounts by submitting a publication using this product:
www.novusbio.com/publications

