

Product Datasheet

MBD3 Antibody NBP3-18656-100ul

Unit Size: 100 ul

Store at -20C short term. Aliquot and store at -80C long term. Avoid freeze-thaw cycles.

www.novusbio.com



technical@novusbio.com

Protocols, Publications, Related Products, Reviews, Research Tools and Images at:
www.novusbio.com/NBP3-18656

Updated 9/9/2025 v.20.1

Earn rewards for product
reviews and publications.

Submit a publication at www.novusbio.com/publications

Submit a review at www.novusbio.com/reviews/destination/NBP3-18656



NBP3-18656-100ul

MBD3 Antibody

Product Information	
Unit Size	100 ul
Concentration	Please see the vial label for concentration. If unlisted please contact technical services.
Storage	Store at -20C short term. Aliquot and store at -80C long term. Avoid freeze-thaw cycles.
Clonality	Polyclonal
Preservative	0.05% Sodium Azide
Purity	Whole Antiserum
Buffer	Whole antiserum

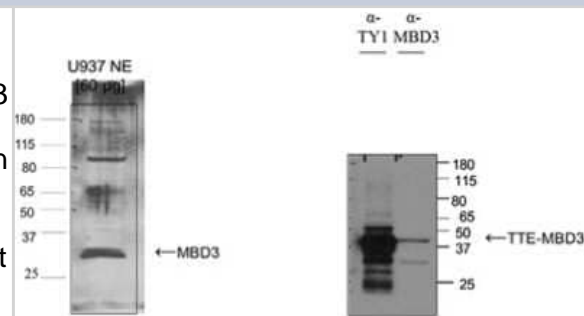
Product Description	
Description	Novus Biologicals Rabbit MBD3 Antibody (NBP3-18656) is a polyclonal antibody validated for use in WB and ELISA. All Novus Biologicals antibodies are covered by our 100% guarantee.
Host	Rabbit
Gene ID	53615
Gene Symbol	MBD3
Species	Human
Immunogen	Polyclonal antibody raised in rabbit against human MBD3 (Methyl-CpG-binding domain protein 3), using three different KLH-conjugated synthetic peptides.

Product Application Details	
Applications	Western Blot, ELISA
Recommended Dilutions	Western Blot 1:2000, ELISA 1:100-1:500

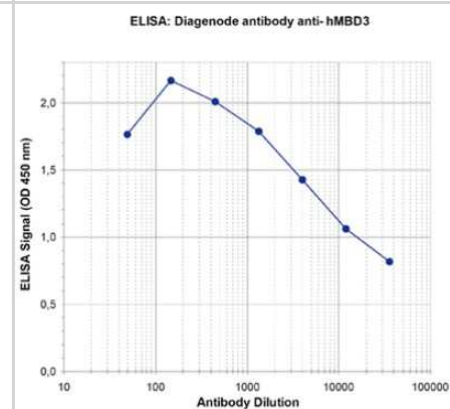


Images

Western Blot: MBD3 Antibody [NBP3-18656] - Figure 2A: Western blot was performed on nuclear extracts from a Human leukemic monocyte lymphoma cell line (U937 NE, 60 ug) with antibody against human MBD3, diluted 1:2,000 in TBS-Tween with 5% skimmed milk. The MW marker (in kDa) is on the left; the location of the protein of interest is indicated on the right. Figure 2B: TY1-tagged MBD3 (TTE-MBD3) was over-expressed in osteosarcoma cells (U2OS). Nuclear extracts were prepared and separated by electrophoresis. An antibody directed against the TY1 tag or the antibody against MBD3 (1:2,000 in TBS-Tween containing 5% skimmed milk) were used to detect TTE-MBD3 (lane 1 and 2, respectively). Location of tagged MBD3 is indicated with an arrow.



ELISA: MBD3 Antibody [NBP3-18656] - Figure 1. Determination of the antibody titer To determine the titer of the antibody, an ELISA was performed using a serial dilution of the antibody directed against human MBD3. The wells were coated with the peptides used for immunisation of the rabbit. By plotting the absorbance against the antibody dilution (Figure 1), the titer of the antibody was estimated to be 1:13,890.





Novus Biologicals USA

10730 E. Briarwood Avenue
Centennial, CO 80112
USA
Phone: 303.730.1950
Toll Free: 1.888.506.6887
Fax: 303.730.1966
nb-customerservice@bio-techne.com

Bio-Techne Canada

21 Canmotor Ave
Toronto, ON M8Z 4E6
Canada
Phone: 905.827.6400
Toll Free: 855.668.8722
Fax: 905.827.6402
canada.inquires@bio-techne.com

Bio-Techne Ltd

19 Barton Lane
Abingdon Science Park
Abingdon, OX14 3NB, United Kingdom
Phone: (44) (0) 1235 529449
Free Phone: 0800 37 34 15
Fax: (44) (0) 1235 533420
info.EMEA@bio-techne.com

General Contact Information

www.novusbio.com
Technical Support: nb-technical@bio-techne.com
Orders: nb-customerservice@bio-techne.com
General: novus@novusbio.com

Products Related to NBP3-18656-100ul

NBP2-33376H	Blue Marker Antibody (6F4-F6) [HRP]
HAF008	Goat anti-Rabbit IgG Secondary Antibody [HRP]
NB7160	Goat anti-Rabbit IgG (H+L) Secondary Antibody [HRP]
NBP2-23231	Recombinant Human MBD3 His Protein

Limitations

This product is for research use only and is not approved for use in humans or in clinical diagnosis. Primary Antibodies are guaranteed for 1 year from date of receipt.

For more information on our 100% guarantee, please visit www.novusbio.com/guarantee

Earn gift cards/discounts by submitting a review: www.novusbio.com/reviews/submit/NBP3-18656

Earn gift cards/discounts by submitting a publication using this product:
www.novusbio.com/publications

