

# Product Datasheet

## L1CAM Antibody (CL12988)

### NBP3-18553-100ul

Unit Size: 100 ul

Store at 4C short term. Aliquot and store at -20C long term. Avoid freeze-thaw cycles.

[www.novusbio.com](http://www.novusbio.com)



[technical@novusbio.com](mailto:technical@novusbio.com)

Protocols, Publications, Related Products, Reviews, Research Tools and Images at:  
[www.novusbio.com/NBP3-18553](http://www.novusbio.com/NBP3-18553)

Updated 2/27/2025 v.20.1

Earn rewards for product reviews and publications.

Submit a publication at [www.novusbio.com/publications](http://www.novusbio.com/publications)

Submit a review at [www.novusbio.com/reviews/destination/NBP3-18553](http://www.novusbio.com/reviews/destination/NBP3-18553)



**NBP3-18553-100ul**

L1CAM Antibody (CL12988)

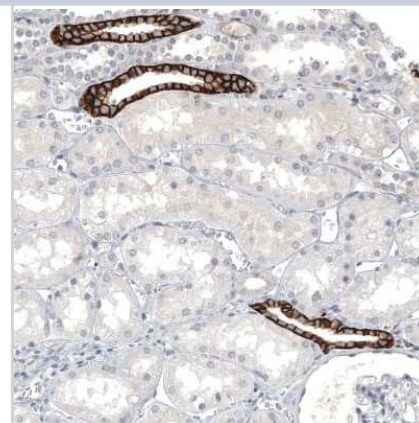
Product Information	
Unit Size	100 ul
Concentration	Concentrations vary lot to lot. See vial label for concentration. If unlisted please contact technical services.
Storage	Store at 4C short term. Aliquot and store at -20C long term. Avoid freeze-thaw cycles.
Clonality	Monoclonal
Clone	CL12988
Preservative	0.02% Sodium Azide
Isotype	IgG2a
Purity	Protein A purified
Buffer	PBS, pH 7.2, 40% glycerol

Product Description	
Host	Mouse
Gene ID	3897
Gene Symbol	L1CAM
Species	Human
Immunogen	This antibody was developed using a synthetic peptide derived from P32004, with the exact immunogen sequence remaining proprietary.

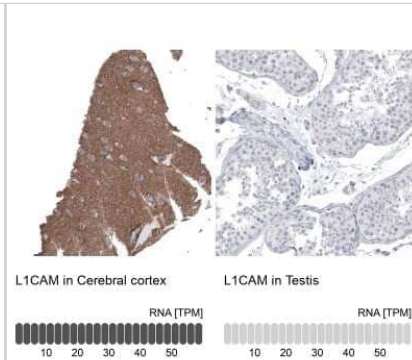
Product Application Details	
Applications	Immunohistochemistry, Immunohistochemistry-Paraffin
Recommended Dilutions	Immunohistochemistry 1:50 - 1:200, Immunohistochemistry-Paraffin 1:50 - 1:200
Application Notes	For use with IHC-Paraffin, HIER pH 6 retrieval is recommended.

**Images**

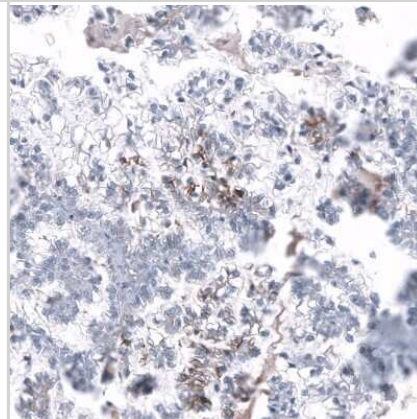
Immunohistochemistry-Paraffin: L1CAM Antibody (CL12988) [NBP3-18553] - Staining of human kidney shows strong membranous positivity in a subset of cells in tubules.



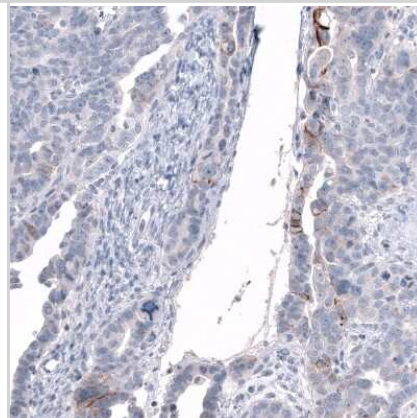
Immunohistochemistry-Paraffin: L1CAM Antibody (CL12988) [NBP3-18553] - Analysis in human cerebral cortex and testis tissues using NBP3-18553 antibody. Corresponding L1CAM RNA-seq data are presented for the same tissues.



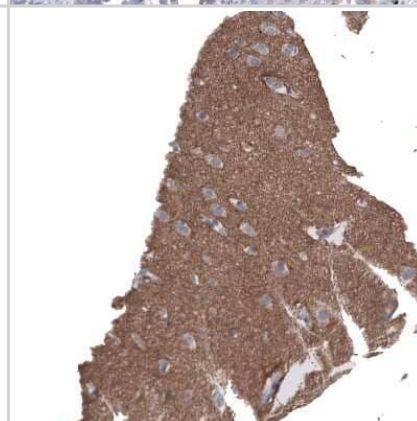
Immunohistochemistry-Paraffin: L1CAM Antibody (CL12988) [NBP3-18553] - Staining of human ovarian cancer (clear cell carcinoma) shows moderate membranous positivity in a subset of tumor cells.



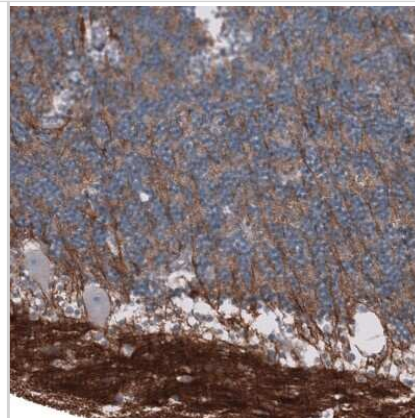
Immunohistochemistry-Paraffin: L1CAM Antibody (CL12988) [NBP3-18553] - Staining of human ovarian cancer (papillary carcinoma) shows moderate membranous positivity in a subset of tumor cells.



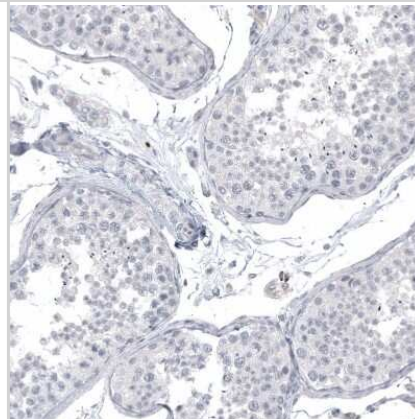
Immunohistochemistry-Paraffin: L1CAM Antibody (CL12988) [NBP3-18553] - Staining of human cerebral cortex shows moderate positivity in neuropil.



Immunohistochemistry-Paraffin: L1CAM Antibody (CL12988) [NBP3-18553] - Staining of human cerebellum shows strong positivity in neuropil.



Immunohistochemistry-Paraffin: L1CAM Antibody (CL12988) [NBP3-18553] - Staining of human testis shows no positivity in cells in seminiferous ducts as expected.





### **Novus Biologicals USA**

10730 E. Briarwood Avenue  
Centennial, CO 80112  
USA  
Phone: 303.730.1950  
Toll Free: 1.888.506.6887  
Fax: 303.730.1966  
nb-customerservice@bio-techne.com

### **Bio-Techne Canada**

21 Canmotor Ave  
Toronto, ON M8Z 4E6  
Canada  
Phone: 905.827.6400  
Toll Free: 855.668.8722  
Fax: 905.827.6402  
canada.inquires@bio-techne.com

### **Bio-Techne Ltd**

19 Barton Lane  
Abingdon Science Park  
Abingdon, OX14 3NB, United Kingdom  
Phone: (44) (0) 1235 529449  
Free Phone: 0800 37 34 15  
Fax: (44) (0) 1235 533420  
info.EMEA@bio-techne.com

### **General Contact Information**

www.novusbio.com  
Technical Support: nb-technical@bio-techne.com  
Orders: nb-customerservice@bio-techne.com  
General: novus@novusbio.com

### **Products Related to NBP3-18553-100ul**

---

HAF007	Goat anti-Mouse IgG Secondary Antibody [HRP]
NB720-B	Rabbit anti-Mouse IgG (H+L) Secondary Antibody [Biotin]
NBP1-96778	Mouse IgG2a Isotype Control (M2A)
NBP2-59904-50ug	Recombinant Human L1CAM His Protein

---

### **Limitations**

This product is for research use only and is not approved for use in humans or in clinical diagnosis. Primary Antibodies are guaranteed for 1 year from date of receipt.

For more information on our 100% guarantee, please visit [www.novusbio.com/guarantee](http://www.novusbio.com/guarantee)

Earn gift cards/discounts by submitting a review: [www.novusbio.com/reviews/submit/NBP3-18553](http://www.novusbio.com/reviews/submit/NBP3-18553)

Earn gift cards/discounts by submitting a publication using this product:  
[www.novusbio.com/publications](http://www.novusbio.com/publications)

