

# Product Datasheet

## alpha Tubulin Antibody (RM113) [Biotin] NBP3-18536

Unit Size: 50 ul

Store at -20C.

[www.novusbio.com](http://www.novusbio.com)



[technical@novusbio.com](mailto:technical@novusbio.com)

Protocols, Publications, Related Products, Reviews, Research Tools and Images at:  
[www.novusbio.com/NBP3-18536](http://www.novusbio.com/NBP3-18536)

Updated 9/11/2024 v.20.1

Earn rewards for product  
reviews and publications.

Submit a publication at [www.novusbio.com/publications](http://www.novusbio.com/publications)

Submit a review at [www.novusbio.com/reviews/destination/NBP3-18536](http://www.novusbio.com/reviews/destination/NBP3-18536)



**NBP3-18536**

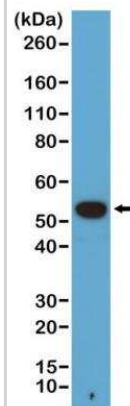
alpha Tubulin Antibody (RM113) [Biotin]

<b>Product Information</b>	
<b>Unit Size</b>	50 ul
<b>Concentration</b>	Please see the vial label for concentration. If unlisted please contact technical services.
<b>Storage</b>	Store at -20C.
<b>Clonality</b>	Monoclonal
<b>Clone</b>	RM113
<b>Preservative</b>	0.09% Sodium Azide
<b>Isotype</b>	IgG
<b>Conjugate</b>	Biotin
<b>Purity</b>	Protein A purified
<b>Buffer</b>	50% Glycerol, PBS, 1% BSA
<b>Product Description</b>	
<b>Host</b>	Rabbit
<b>Gene ID</b>	7846
<b>Gene Symbol</b>	TUBA1A
<b>Species</b>	All Species
<b>Specificity/Sensitivity</b>	This alpha Tubulin Antibody (RM113) reacts to alpha Tubulin, including Tubulin alpha-1A chain and Tubulin alpha-1B chain.
<b>Immunogen</b>	This alpha Tubulin Antibody (RM113) was developed against a peptide corresponding to the C-terminus of alpha Tubulin
<b>Product Application Details</b>	
<b>Applications</b>	Western Blot, Immunocytochemistry/ Immunofluorescence, Immunohistochemistry, Immunoprecipitation, Chromatin Immunoprecipitation (ChIP)
<b>Recommended Dilutions</b>	Western Blot 1:1000, Immunohistochemistry 1:200, Immunocytochemistry/ Immunofluorescence 1:200, Immunoprecipitation 1:200, Chromatin Immunoprecipitation (ChIP) 1:200

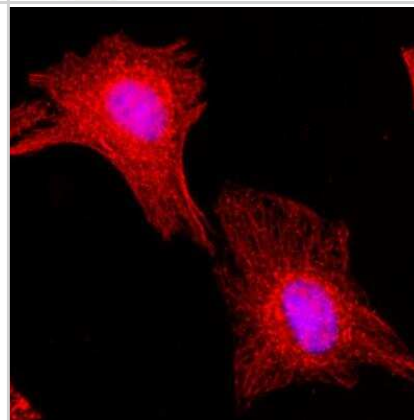


## Images

Western Blot: alpha Tubulin Antibody (RM113) [Biotin] [NBP3-18536] - Western blot of A431 cells, using NBP3-18536 at 1/1000 dilution, showed a band of alpha Tubulin at the predicted MW (~50 kDa).



Immunocytochemistry/Immunofluorescence: alpha Tubulin Antibody (RM113) [Biotin] [NBP3-18536] - Immunocytochemical staining of HeLa cells, using NBP3-18536 at 1/200 dilution (red). Nuclei have been labeled with DAPI (blue).





### **Novus Biologicals USA**

10730 E. Briarwood Avenue  
Centennial, CO 80112  
USA  
Phone: 303.730.1950  
Toll Free: 1.888.506.6887  
Fax: 303.730.1966  
nb-customerservice@bio-techne.com

### **Bio-Techne Canada**

21 Canmotor Ave  
Toronto, ON M8Z 4E6  
Canada  
Phone: 905.827.6400  
Toll Free: 855.668.8722  
Fax: 905.827.6402  
canada.inquires@bio-techne.com

### **Bio-Techne Ltd**

19 Barton Lane  
Abingdon Science Park  
Abingdon, OX14 3NB, United Kingdom  
Phone: (44) (0) 1235 529449  
Free Phone: 0800 37 34 15  
Fax: (44) (0) 1235 533420  
info.EMEA@bio-techne.com

### **General Contact Information**

www.novusbio.com  
Technical Support: nb-technical@bio-techne.com  
Orders: nb-customerservice@bio-techne.com  
General: novus@novusbio.com

### **Products Related to NBP3-18536**

---

NBP2-24891B	Rabbit IgG Isotype Control [Biotin]
H00007846-Q01-10ug	Recombinant Human alpha Tubulin GST (N-Term) Protein
DPLG70	PLA2G7/PAF-AH/Lp-PLA2 [HRP]
NBL1-17427	alpha Tubulin Overexpression Lysate

---

### **Limitations**

This product is for research use only and is not approved for use in humans or in clinical diagnosis. Primary Antibodies are guaranteed for 1 year from date of receipt.

For more information on our 100% guarantee, please visit [www.novusbio.com/guarantee](http://www.novusbio.com/guarantee)

Earn gift cards/discounts by submitting a review: [www.novusbio.com/reviews/submit/NBP3-18536](http://www.novusbio.com/reviews/submit/NBP3-18536)

Earn gift cards/discounts by submitting a publication using this product:  
[www.novusbio.com/publications](http://www.novusbio.com/publications)

